

## Product datasheet for **MG209142**

### Appbp2 (NM\_025825) Mouse Tagged ORF Clone

#### Product data:

Product Type:	Expression Plasmids
Product Name:	Appbp2 (NM_025825) Mouse Tagged ORF Clone
Tag:	TurboGFP
Symbol:	Appbp2
Synonyms:	1300003O07Rik; AI465480; PAT1
Mammalian Cell Selection:	Neomycin
Vector:	pCMV6-AC-GFP (PS100010)
E. coli Selection:	Ampicillin (100 ug/mL)



[View online »](#)

**ORF Nucleotide Sequence:**

>MG209142 representing NM\_025825  
 Red=Cloning site Blue=ORF Green=Tags(s)

TTTTGTAATACGACTCACTATAGGGCGGCCGGAATTCGTCGACTGGATCCGGTACCGAGGAGATCTGCC  
 GCC**GCGATCGCC**

ATGGCGGCGTGGAGCTCGAGTGGATCCCGGAGACGCTCTACAACACCGCCATCTCCGCTGTCGTGGACA  
 ACTACATCCGCTCGCGCCGCGACATCCGCTCCTTGCCGGAGAATATCCAGTTCGACGTTTACTACAAGCT  
 TTACCAACAGGGACGCTTGTGTAGCTCGGACGTAATTCTGTGAATTGGAAGTTTTTGGCTAAAGTTTTG  
 AGAGCTTTGGATAAAAGACATTTGCTCCACCAGTGTTCAGGCTCTGATGGACCATGGCGTTAAGGTAG  
 CTTCCGCTTTGGCTACTCCTTCAGTAGACGGTCTTACATAGCAGAGTCCGACGCTGCAGTAAAGGA  
 GAAGGCCATCCAGGTTGGCTTTGTCTTAGGTGGCTTTCTTTCTGATGCAGGCTGGTACAGTGATGCTGAA  
 AAGTTTTTCTGCTGCCTTCAGTTGTGTACGCTACATGATGAGATGCTCCACTGGTCCGAGCAGTGG  
 AGTGTGTGTGAGTTGCTTCATGTGCGAAATGGAAATGTAAATATCATCTAGGTGAAGAAACATTTAA  
 ATTAGCTCAGACATACATGGATAAGCTGTCTAAACATGGCCAGCAAGCAAATAGAGCTGCTCTACGGA  
 GAACTATGTGCACTCCTGTTGCAAAAAGCCACTATGATGAGGCATACAAGTGGTGCCTGAGGCAATGA  
 AGGAAATTACAGCAGGCTTACCAGTCAAAGTTGTGGTGGATGTTTTAAGCAAGCTTCTAAGGCTTGTGT  
 AGTCAAACGTGAATTTAAGAAGGCAGAACAGTTAATTAACATGCAGTGTATTTGGCACGAGATCATTTTC  
 GGATCCAAACACCCAAAATACTCTGACACACTGCTAGATTATGGGTTCTACTTACTCAATGTAGACAATA  
 TCTGTCAGTCTGTTGCAATTTACCAGGCAGCCCTCGACATTCGACAGTCAAGTGTGGTGGCAAAAATAT  
 TCATGTAGCAACAGCTCATGAAGACCTGGCCTACTTTCCTACGTTCCACAGTACAGCTCTGGAAAATTC  
 GACAATGCACATTTTCATGCAGAAAGAGCCATTGGTATCATTACTCACATCTACCTGAAGATCATCTTC  
 TTCTGGCTTCTTCAAAGAGGGTGAAGCACTTATTCTAGAGGAGATTGCGATTGACTGTCACAACAAGGA  
 GACGGAGCAGCGGCTGCTTCAGGAGGCACACGACTTGCACCTTGTCTTCGCTGCAGCTGGCTAAGAAAGCA  
 TTTGGGAATTTAATGTACAGACTGCAAAAGCACTATGGGAACCTCGGAAGGCTCTATCAGTCAATGAGAA  
 AATTTAAGGAAGCTGAAGAAATGCACATAAAAGCAATTCAGATTAAGGAGCAGCTCCTTGGCCAAGAAGA  
 TTATGAAGTGGCCCTTTCAGTGGGACACCTGGCATCTCTGTATAATTATGACATGAATCAGTATGAAAAT  
 GCTGAGAACTGTACCTGCGGTCGATAGCCATTGGGAAGAACTGTTGGTGAAGGCTACAGTGGACTAG  
 AATATGATTACCGGGCCTCATTAACTTTACAACCTCATTGGGAATTATGAGAAAGTGTTCGAGTATCA  
 CAACGTTCTGTCTAACTGGAACCGGTTGCGAGATCGACAGTATTCAGTGACCGATGCCCTGAAGACGTC  
 AGCAGCAGCCCCAGTCCACTGAAGAAGTGGTGCAGTCTTTCTGATGGCTCAGAATGTTGAGGGACCAA  
 GCTGC

**ACGCGT**ACGCGGCCGCTCGAG – GFP Tag – GTTTAA

**Protein Sequence:**

>MG209142 representing NM\_025825  
 Red=Cloning site Green=Tags(s)

MAAVELEWIPETLYNTAISAVVDNYIRSRDIRSLPENIQFDVYYKLYQQGRLCQLGSEFCELEVFQVLR  
 RALDKRHLLHHCFQALMDHGVKVASVLAYSFSRRCYSIAESDAVKEKAIQVGFVLGGFLSDAGWYSDAE  
 KVFLSCLQLCTLHDEMLHWFRAVECCVRLHLVRNGNCKYHLGEETFKLAQTYMDKLSKHGQQANRAALY  
 ELCALLFAKSHYDEAYKWCVEAMKEITAGLPVKVVVDVLRQASKACVVKREFKKAQELIKHAVYLRDHF  
 GSKHPKYSDDLDFYLLNVDNICQSVAIYQAALDIRQSVFGGKNIHVATAHEDLAYSSVYVHQYSSGKF  
 DNALFHAERAIGIITHILPEDHLLASSKRVKALILEEIAIDCHNKETEQRLLQEADHLHSSLQLAKKA  
 FGEFNVQTAHYGNLGRLYQSMRKFKEAEEMHIKAIQIKEQLLQEDYEVALSVGHLASLYNYDMNQYEN  
 AEKLYLRSIAIGKFLFEGYSGLIYDYGRLIKLYNSIGNYKVFYHNVLNWNRLRDRQYSVTDALDY  
 SSSPQSTEEVVQSFLMAQNVGSPC

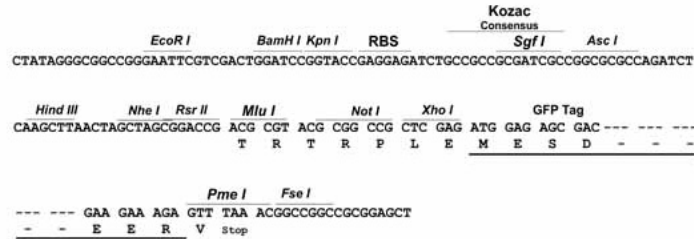
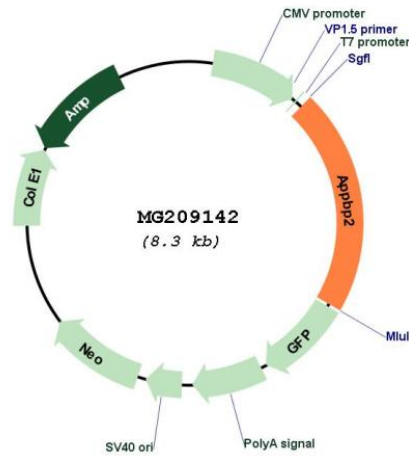
**TRTRPLE** – GFP Tag – V

**Restriction Sites:**

Sgfl-MluI

**Cloning Scheme:**

Cloning sites used for ORF Shutting:


**Plasmid Map:**


ACCN: NM\_025825

ORF Size: 1755 bp

<b>OTI Disclaimer:</b>	The molecular sequence of this clone aligns with the gene accession number as a point of reference only. However, individual transcript sequences of the same gene can differ through naturally occurring variations (e.g. polymorphisms), each with its own valid existence. This clone is substantially in agreement with the reference, but a complete review of all prevailing variants is recommended prior to use. <a href="#">More info</a>
<b>OTI Annotation:</b>	This clone was engineered to express the complete ORF with an expression tag. Expression varies depending on the nature of the gene.
<b>Components:</b>	The ORF clone is ion-exchange column purified and shipped in a 2D barcoded Matrix tube containing 10ug of transfection-ready, dried plasmid DNA (reconstitute with 100 ul of water).
<b>Reconstitution Method:</b>	<ol style="list-style-type: none"><li>1. Centrifuge at 5,000xg for 5min.</li><li>2. Carefully open the tube and add 100ul of sterile water to dissolve the DNA.</li><li>3. Close the tube and incubate for 10 minutes at room temperature.</li><li>4. Briefly vortex the tube and then do a quick spin (less than 5000xg) to concentrate the liquid at the bottom.</li><li>5. Store the suspended plasmid at -20°C. The DNA is stable for at least one year from date of shipping when stored at -20°C.</li></ol>
<b>RefSeq:</b>	<a href="#">NM_025825.3</a> , <a href="#">NP_080101.1</a>
<b>RefSeq Size:</b>	2407 bp
<b>RefSeq ORF:</b>	1758 bp
<b>Locus ID:</b>	66884
<b>UniProt ID:</b>	<a href="#">Q9DAX9</a>
<b>Cytogenetics:</b>	11 C
<b>Gene Summary:</b>	May play a role in intracellular protein transport. May be involved in the translocation of APP along microtubules toward the cell surface (By similarity).[UniProtKB/Swiss-Prot Function]