

Product datasheet for **MG209139**

DII3 (NM_007866) Mouse Tagged ORF Clone

Product data:

Product Type:	Expression Plasmids
Product Name:	DII3 (NM_007866) Mouse Tagged ORF Clone
Tag:	TurboGFP
Symbol:	DII3
Synonyms:	pu; pudgy
Mammalian Cell Selection:	Neomycin
Vector:	pCMV6-AC-GFP (PS100010)
E. coli Selection:	Ampicillin (100 ug/mL)



[View online »](#)

ORF Nucleotide Sequence:

>MG209139 representing NM_007866
 Red=Cloning site Blue=ORF Green=Tags(s)

TTTTGTAATACGACTCACTATAGGGCGGCCGGAATTCGTCGACTGGATCCGGTACCGAGGAGATCTGCC
 GCC**CGGATCGCC**

ATGGTCTCTCTGCAGGTGTCTCCGCTTCCAGACGCTGATCCTGGCTTTTCTTCTCTCAGGCACTGC
 CAGCTGGTGTCTTCGAGCTACAAATTCATTCTTTTCGGGCCAGGCCAGGCCTCGGGACCCACGCTCCC
 CTGCAACGCCCGAGGCCCTTGGCGCTCTTCTTCAGGGTCTGCCTGAAGCCCGGAGTCTCCAGGAGGCC
 ACCGAGTCCCTGTGCGCCTGGGCGCAGCACTGAGCACGAGCGTCCCGTCTATACGAGACCCCGGAG
 AGTCAGCGGCTGCCCTGCCGCTGCCTGATGGCCTCGTACGTGTGCCCTTCCGCGATGCTTGGCCGGCAC
 TTCTCCCTCGTATTGAAACCTGGAGAGAGCAGCTGGGAGAGCATGCTGGAGGGCCCGCTGGAACCTG
 CTAGCACGTGTGGTCGGCCGTAGACGCCTGGCGGCTGGGGCCCGTGGGCCCGCATGTGCAGCGCACAG
 GCACATGGGAGTTGCACTTCTCCTACCGCGCGCGGTGCGAGCCGCCCGCGTGGGGCCCGCTGCGCGCG
 CCTGTGCCGCTCACGCAGTGCCCTCGCGGTGTGGCCCGGACTGCGACCTGCACGCCATTCCCAGAC
 GAGTGCAGAACCCCGTCTGTGTGTGCACACAGGCTGCAGCCCCGAGCACGGCTACTGTGAAGAGCCTGATG
 AATGCCGTTGCCTGGAGGGCTGGACTGGACCCCTCTGCACGGTCCCTGTCTCCACAGTAGCTGCCTGAA
 CTCCAGGGTTCCTGGTCTGCCAGCACTGGATGCCTTTTACCTGGGCCTGGACCTTGTGATGGGAACCCA
 TGTGCCAATGGGGCAGCTGTAGTGAACCTCTGGCTCCTTTGAATGTGCCTGTCCCCGGGGATTCTACG
 GGCTTCGATGTGAGGTGAGCGGGGTACGTGCGCAGATGGACCTGTCTCAATGGCGCTTGTGTGTTGG
 CGGTGAAGATCCTGACTTGCCATGTCTGTGATTGCCACCTGGTTTCCAAGGCTCTAACTGTGAGAAG
 AGGGTGGACCGCTGTAGCCTGCAGCCATGTCAGAATGGCGCCTCTGCCTGGACCTGGGCCACCGCTTGC
 GCTGCCGCTGTGCGCGGGATTCCGCCGGCCGCTGCGAGCACGACCTGGACACTGCGCCGGCCGCGC
 CTGTGCCAACGGCGGCAGGTGCGTGGAGGGCGGCGGCTCGCGCCGCTGCTCTGTGCGCTGGGCTTCGCG
 GGGCGGACTGCCGAGAACGCGCCGACCCTGCGCCTCCCGCCCTGCGCGCATGGAGGCCGTTGTACG
 CCCACTTCTCTGGCTGGTCTGCGCCTGCGCGCCCGGCTACATGGGCGTGAGATGCGAGTTGCTGTGCG
 CCCGGACGGCGGACGCGGTGCCCGCCCGCCCGGGGCTGAGGCAGGCGGATCCACAGCGCTTCTT
 CTGCTCCCGCTTGGGGCTGCTGGTGGCCCGGTTGGCTGGCGCCGACTCTTGGTATCCACGTTT
 GCCCGGAGGTCCTGGCCAGGATACCGGACTCGCTGCTTCTGGGACCCGGGAGCCTTCGGTCCACAC
 GCTCCCGATGCACTCAACAACCTGAGGTTACAAGACGGTGTGGGGATGGCCCCAGTTCGTCGGCTGAC
 TGAATCATCCTGAAGATGGAGACTCTAGATCCATTTATGTCATACCAGCCCTTCCATTTATGCACGAG
 AGGCC

AG**CGGACCG**ACGCGTACGCGGCCGCTCGAG - GFP Tag - GTTTAA

Protein Sequence:

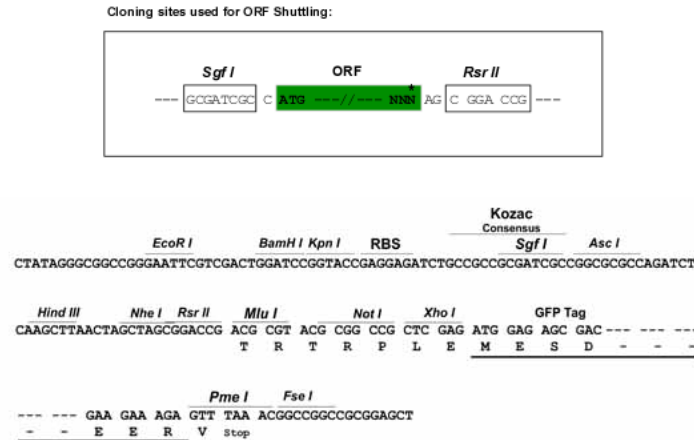
>MG209139 representing NM_007866
 Red=Cloning site Green=Tags(s)

MVSLQVSPLSQTLILAFLLPQALPAGVFELQIHSFGPGPLGTPRSPCNARGPCRLFFRVCLKPGVSQEA
 TESLICALGAALSTSVPVYTEHPGESAAALPLPDGLVRVPPFRDAWPSTSLVIETWREQLGEHAGGPAWNL
 LARVVGRRLAAGGPWARDVQRTGTWELHFSYRARCEPPAVGAACARLCSRSPSAPSRGGLRPCTFPFD
 ECEAPSVCRPGCSPEHYCEEPDECRCLEGWTGPLCTVPVSTSSCLNSRVPGPASTGCLLPGPGCDGNP
 CANGGSCSETSGSFECACPRGFYGLRCEVSGVTADGPCFNGLCVGGEDPDSAYVCHCPPGFQGSNCEK
 RVDRCSLQPCQNGGLCLDLGHALRCRCRAGFAGPRCEHDLDDCAGRACANGGTVEGGGSRRCSCALGFG
 GRDCRERADPCASRCAHGGRCYAHFSGLVCACAPGYMGVRCFAVRPDGADAVPAAPRGLRQADPQRFL
 LPPALGLLVAAGLAGAALLVIHVRRRRGPQDTGTRLLSGTREPSVHTLPDALNNLRLQDGAGDGPSSAD
 WNHPEGDGDSRSIYVIPAPSIYAREA

SGP**TRRRLE** - GFP Tag - V

Restriction Sites:

Sgfl-RsrII

Cloning Scheme:


ACCN: NM_007866

ORF Size: 1755 bp

OTI Disclaimer: The molecular sequence of this clone aligns with the gene accession number as a point of reference only. However, individual transcript sequences of the same gene can differ through naturally occurring variations (e.g. polymorphisms), each with its own valid existence. This clone is substantially in agreement with the reference, but a complete review of all prevailing variants is recommended prior to use. [More info](#)

OTI Annotation: This clone was engineered to express the complete ORF with an expression tag. Expression varies depending on the nature of the gene.

Components: The ORF clone is ion-exchange column purified and shipped in a 2D barcoded Matrix tube containing 10ug of transfection-ready, dried plasmid DNA (reconstitute with 100 ul of water).

Reconstitution Method:

1. Centrifuge at 5,000xg for 5min.
2. Carefully open the tube and add 100ul of sterile water to dissolve the DNA.
3. Close the tube and incubate for 10 minutes at room temperature.
4. Briefly vortex the tube and then do a quick spin (less than 5000xg) to concentrate the liquid at the bottom.
5. Store the suspended plasmid at -20°C. The DNA is stable for at least one year from date of shipping when stored at -20°C.

RefSeq: [NM_007866.2](#), [NP_031892.2](#)

RefSeq Size: 2163 bp

RefSeq ORF: 1758 bp

Locus ID: 13389

UniProt ID: [O88516](#)

Cytogenetics: 7 16.67 cM

Gene Summary:

Inhibits primary neurogenesis. May be required to divert neurons along a specific differentiation pathway. Plays a role in the formation of somite boundaries during segmentation of the paraxial mesoderm.[UniProtKB/Swiss-Prot Function]