

Product datasheet for **MG209136**

Ercc6l2 (NM_001013608) Mouse Tagged ORF Clone

Product data:

Product Type:	Expression Plasmids
Product Name:	Ercc6l2 (NM_001013608) Mouse Tagged ORF Clone
Tag:	TurboGFP
Symbol:	Ercc6l2
Synonyms:	0610007P08Rik; 1700019D06Rik; 9330134C04Rik; Rad26l; Sr278
Mammalian Cell Selection:	Neomycin
Vector:	pCMV6-AC-GFP (PS100010)
E. coli Selection:	Ampicillin (100 ug/mL)



[View online »](#)

ORF Nucleotide Sequence:

>MG209136 representing NM_001013608
 Red=Cloning site Blue=ORF Green=Tags(s)

TTTTGTAATACGACTCACTATAGGGCGGCCGGGAATTCGTCGACTGGATCCGGTACCGAGGAGATCTGCC
 GCC**CGGATCGCC**

ATGACCTCAAATCTGTTAGGAAAAGAAAAGGTACAGATGATATTAGCGATGAGTCTGATGACATTGACA
 TGTTCCCAAGTCAAGAATAAGAAAGCAAAGAGCCACTTCTTCTGAAATTTAAGAGAAAAAGGAAAA
 CAAAAGGAAACTTGATAATTCTCTGTAACAGCAAAGGAAGCAAATCAAGTGTGTGCAGCTGATGGAGAC
 CGTAGCTCTCAGGTTATTGAGGATTTTTCATCCTCAGATGACAATTTATCTCTCAGCCACTTGAGTTTCA
 CTAAACTAAGTCACAGAGCAGAACTGTAAAAGATAAAATCAGCTTGCCCCAAGCTGCCTGGCCGAGA
 TAAGAAAAATAACACTTTTATATCAAGAAAACCACCAAGCTTTCTAAATGAAGGAGTTATCAGTCAAGAG
 CAAATATGCAACTCAATGGATAAAATATTAGATGGTGTTCAGGAAGTGGCTTATATCCACTCAAATCAGA
 ATGTGATCGGCTCAAGCAGAGCTGAGAACCACATGAGCCGATGGGCAACGCGTGTGTGTTTGTGTTGAA
 GCAGTTTTCCAGCTCCCTGCTAATGTAGCTGTTGCAGTTCTAAGACATACAAAACCTCAGTGAAGGCA
 AACATAGTGTACCTACAGAGAAAGATCAACCACCAAGTGTGGAGGCATTTCTCTCTCTGTACGTAT
 CCCACCCTGTAGTCCAGAAAAAGAAAGATGTATATCGTACTAACCATACTACCTTCATCATTGGAGAAAC
 ACCAAGAGGAATCCGAGAAAGCAGTTTGAAGAAATGGCCTTACTATAAGCTGCCTGTAAAGGAGTTT
 GCTGAACAAGTTACTAGGGCCACATCTGAAGAGCGACAGAAAAATGCTCAGAGACTTCTACAGTCTTCAGC
 ACCCAGAGGTAAGGAGTTCTTTGTGAATTCGCTTCAGAATTGATAAAATCTGTCCACAAGAAAGAGA
 GAGGGTGAGGAATAAATCTAAGAAAAAGAAATCTCTTTAAAAGAAAACCCCTCAAATGATAGTACTTTA
 TCATGTTATGATCCACCAACAAAATGTCTCAAGTTTACAACAGAAAAATATGTGAAGGAAAAATCAGTCA
 GATCTCAGAATCATGTTTTCCATAGAGAAGACACATTTTCTAGTGTGCAGAGATTAACAAATCACCTGT
 CAGCTTTACTGAAGAGCTTCACAGTGAGAGAAAGGACCACACCCCAAGGATACCACAACAGTCTTCTGT
 CCAAACAGCAACTCTGAAGCCCTGGAGGACAGCTAGGAAATTTCCCAGGACGTCAGTGGGACCTCACAG
 GAGCATGCGGTTCAAGAAACAGACCCTTTTCAAGTTGAGAAACAAAAGGTTAGAAAAACCCAGGGTCAGA
 AAACACTCCTGAGGATGGCTTACTTGGTACACCTCTATTCTTAACGACCTCTTTAAAAGCCACGGGGAA
 GGTCCCACACAGCTGCCAAAGATGTTCTTTTCAAGGACCTGTGGCAAAAGCAAAGCAGAAACCAAAGATT
 TCTGGGACATCTGAATGAGCAGAAATGATGACAGTCTCAGCAAACCTCACTGACTTGGCAGTGTAGAGAC
 GCTGTGTACCAAAGCACCAGTACCTCAGCCTCCAAAAGGAAAGATGAGCTGGAAGCTTCCCTTTGGAAA
 GCAAACGAGAAGTTTTTGTGGAAGACATTAAGCTCAGATGTTGACGATGAAAGCATAAGCAATACAGAGA
 GAGAG

AG**CGGACCG**ACGCGTACGCGGCCGCTCGAG - GFP Tag - GTTTAA

Protein Sequence:

>MG209136 representing NM_001013608
 Red=Cloning site Green=Tags(s)

MTSKSVRKRKGTDDISDESDDIDMFPKSRIRKQRATTSKFKRKKENKRKLDNSPVTAKEANQVCAADGD
 RSSQVIEDFSSSDNLSLSLSLSTKLSHRAETVKDKISLSPKLPKDPKKNNTFISRKPPSFLNEGVISQE
 QICNSMDKILDGVQEVAYIHSNQNVIGSSRAENHMSRWATRDVFELKQFSQLPANVAVCSSKTYKTQVKA
 NIVSPTEKDQPPSDGGISSPLYVSHPVVQKKKDVYRTNHTTFIIGETPRGIRRKQFEEMASYKLPVKEF
 AEQVTRATSEERQKMLRDFYSLQHPEVKEFFVNSASELIKSVHKKEERVNRKSKEKESLLKENPSNDSTL
 SCYDSTNKMSQVYNRKICEGKSVRSQNHVFHREDTFSSDAEINKSPVSFTEELHSERKDHTPKDTTTTVFC
 PNSNSEALEAELGNSPGRQWDLTGACGSRNRPLFKLRNKRVENPGSENTPEDGLLGDT SILNDL FKSHGE
 GPTQLPKNVLSGPVAKAKQKPKDFWILNEQNDDSLSKLTDLAVIETLCTKAPSTSASKRKDELEASLWK
 ANEKFLWKTLSSDVDESISNTERE

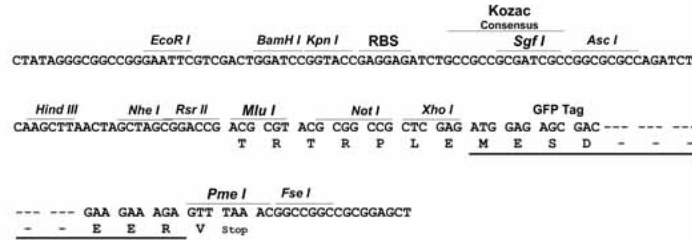
SGP**TRRRLE** - GFP Tag - V

Restriction Sites:

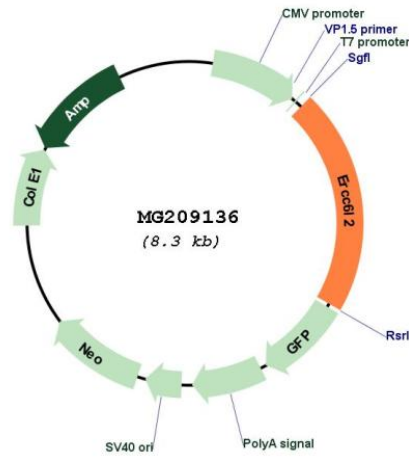
Sgfl-RsrII

Cloning Scheme:

Cloning sites used for ORF Shuttling:



Plasmid Map:



ACCN: NM_001013608

ORF Size: 1755 bp

OTI Disclaimer:	The molecular sequence of this clone aligns with the gene accession number as a point of reference only. However, individual transcript sequences of the same gene can differ through naturally occurring variations (e.g. polymorphisms), each with its own valid existence. This clone is substantially in agreement with the reference, but a complete review of all prevailing variants is recommended prior to use. More info
OTI Annotation:	This clone was engineered to express the complete ORF with an expression tag. Expression varies depending on the nature of the gene.
Components:	The ORF clone is ion-exchange column purified and shipped in a 2D barcoded Matrix tube containing 10ug of transfection-ready, dried plasmid DNA (reconstitute with 100 ul of water).
Reconstitution Method:	<ol style="list-style-type: none">1. Centrifuge at 5,000xg for 5min.2. Carefully open the tube and add 100ul of sterile water to dissolve the DNA.3. Close the tube and incubate for 10 minutes at room temperature.4. Briefly vortex the tube and then do a quick spin (less than 5000xg) to concentrate the liquid at the bottom.5. Store the suspended plasmid at -20°C. The DNA is stable for at least one year from date of shipping when stored at -20°C.
RefSeq:	NM_001013608.1 , NP_001013626.1
RefSeq Size:	2600 bp
RefSeq ORF:	4614 bp
Locus ID:	76251
UniProt ID:	Q9JIM3
Cytogenetics:	13 B3
Gene Summary:	May be involved in early DNA damage response.[UniProtKB/Swiss-Prot Function]