

## Product datasheet for **MG209135**

### **Klhdc4 (NM\_145605) Mouse Tagged ORF Clone**

#### **Product data:**

Product Type:	Expression Plasmids
Product Name:	Klhdc4 (NM_145605) Mouse Tagged ORF Clone
Tag:	TurboGFP
Symbol:	Klhdc4
Synonyms:	AA408426; AV352552; BC012312; G430025P05Rik
Mammalian Cell Selection:	Neomycin
Vector:	pCMV6-AC-GFP (PS100010)
E. coli Selection:	Ampicillin (100 ug/mL)



[View online »](#)

**ORF Nucleotide Sequence:**

>MG209135 representing NM\_145605  
 Red=Cloning site Blue=ORF Green=Tags(s)

TTTTGTAATACGACTCACTATAGGGCGGCCGGGAATTCGTCGACTGGATCCGGTACCGAGGAGATCTGCC  
 GCC**GCGATCGCC**

ATGGGCAAGAAGGAAAGAAGGAGAAGAAGGGCCGGGGCCGGGAGAAAGACGGCCCAAGATGGAGAAGA  
 AGGTGTCCAAGCGCTCGCGGAAGGAGGAGGAAGACCTGGAGGCCCTCATAGCCCATTCCAGACCTTGGA  
 TGCCAAAAAGACCAGGTACAGAAACACCATGTCTCCACCCTCCACGGTTAAACGCCTCCCTGTCT  
 GCTCATCTGAGAAAGATGAGCTGATCCTTTTCGGAGGTGAATATTTCAATGGCCAAAAACCTTCATGT  
 ATAATGAACTCTACATCTACAGTACAGAAAGGACACCTGGACAAAAGTTGACATCCCTGGCCACCTCC  
 CAGGCGCTGTGCTCATCAGGCTGTGGTGTACCCAGGGTGGTGGCAGCTGTGGTCTTCGGTGGGGAG  
 TTTGCATCTCCCGATGGCGAGCAGTTCTACCATTACAAGGACCTCTGGGTCTGCACTTGGCCCAAGA  
 CCTGGGAACAGATTTCGATCAACAGGGGGTCTTCAGGTGAAGCGGGCATCGGATGGTGGCTGGAAGCG  
 ACAGCTAATTCTTTTGGTGGCTCCATGAAAGTCAAGGGACTACATCTACTACAGTGTGTACACC  
 TTCAGCCTGGACACCTTCCAGTGGAGCAAGCTGTCCCATCAGGCGCCGGGCCACGCCAGGTCAAGGCT  
 GCCTGATGGCTGTCACTCCCGAGGCGAGCATAGCCATCTATGGAGTTACTCAAAGCAGAGAGTCAAGAA  
 AGATGTGGACAAAGGCACCCAGCACTCAGACATGTTTCTGCTGAAGCCTGCGGAAGGGGAGAAAGGCAAA  
 TGGGCTTGGACCAGGATTAACCTTCGGGGTCAAGCCTACTGCAAGGTCTGGCTTTTCTGTGGCTGTGG  
 CTCCAAATCATCAGATACTGGTCTTCGGGGCGTGTGTGATGAGGAAGAGGAGGAGACCTGGAGGGCTC  
 TTCTTCAGTGACCTGTATCTATGATGCGGCCAAGAGTCGCTGGTTTGCAGCACAGCTGAAGGGCCCC  
 AAGTCAGAGAAGAAGAAACGGAGGCGGGCAAGGCAGAGGATCCTGAAGGCACCACTGAACAGGAGACTG  
 GGGGAGCAGTGGCCAGAGCCACTGGAGGTGATAAAAGAGGTGGTGTCTGAAGACGGGACAGTGGTCCAC  
 CATTAAAGCAAGTGCTCACTCCCTCAGGGTTGGGGTGCAGCCCTACCTAAGGCTGATGACAGTGCCTCA  
 GAGGCCAGCAGCACTGGACAGGACCATGCCCTCGTTCCAACGCCATGCTGGCTGTCAAGCATGGACTGC  
 TGTACGCTATGGCGCATGTTTGAAGCTGGTACCAGCCAGGTGACCCTTAGTGACCTCTACTGCCTTGA  
 CCTTCACAAGATGGAAGAGTGGAAAACCTTGGTGGAGATGGATCCGAAATCCCAGGAGTGGCTGGAGGAG  
 TCGGACTCAGAAGAGGACAGCAGCTCAGATGAAGAGAGTGAAGATGGAGAGGATGAAGACCAGGAGGACA  
 GTGCTGAGGAGGGAGCAGATCCGCAGCACCCAGAGGTGGCCCGTGGGAGCAATTCGAAGAGTACCTGTC  
 CCGGACTGAGCAGCACTGGCTGAAGCTGGCCCGGAGCCATGTGGGCTGAAGCAAGGAGAAGAAAGTG  
 TTGAAAGTAGCCAGGCCATGGCAAATCATGCTTTGATGATGCAGTTCAAGACATTGCACAGGCCAGAC  
 AC

**ACGCGT**ACGCGGCCGCTCGAG - GFP Tag - GTTTAA

**Protein Sequence:**

>MG209135 representing NM\_145605  
 Red=Cloning site Green=Tags(s)

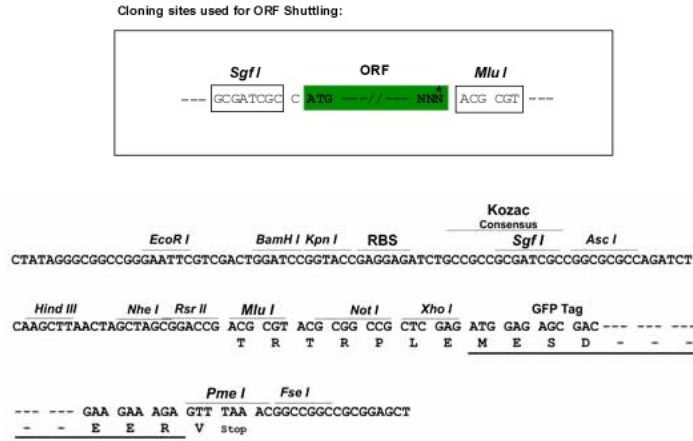
MGKKGKKEKKGRGAEKTAAMEKKVSKRSRKEEEDLEALIAHFQTLDAKKTQVTETPCPPPSRLNASLS  
 AHPEKDELILFGGEYFNGQKTFMYNELYIYSIRKDTWTKVDIPGPPRRCAHQAVVVPQGGGQLWVFGGE  
 FASPDGEQFYHYKDLWLHLATKTWEQIRSTGGPSGRSGHRMVAWKRQLILFGGFHESARDYIYYSVYVT  
 FSLDTFQWSKLSPSGAGPTPRSGCLMAVTPQGSIAIYGGYSKQRVKKDVKDGTQHSDFLLKPAEGGEGK  
 WAWTRINPSGVKPTARSGFSVAVAPNHQILVFGGVCDEEEESLEGSFFSDLYIYDAAKSRWFAAQLKGP  
 KSEKKRRRGAEDPEGTEQETGGSSAPEPLEVIKEVSEDTGTVVTIKQVLTSPGLGVQPSPKADDSAS  
 EASSTGQEP CPRSNAMLAVKHGLLYVYGMFEAGDRQVTLSDLYCLDLHKMEEWKTLVEMDPKSQEWLEE  
 SDSEEDSSSEDESEDGEDEDQEDSAEEGADPQHPEVARGEQFEEYLSRTEQHHLKLARSHVGPPEAKEKKY  
 LKVAQAMAKSCFDDAVQDIAQARH

**TRTRPLE** - GFP Tag - V

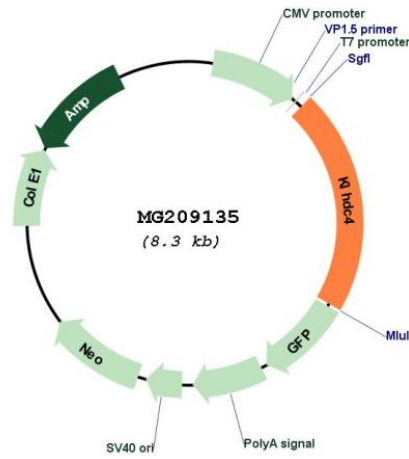
**Restriction Sites:**

Sgfl-MluI

Cloning Scheme:



Plasmid Map:



ACCN: NM\_145605  
 ORF Size: 1752 bp

<b>OTI Disclaimer:</b>	The molecular sequence of this clone aligns with the gene accession number as a point of reference only. However, individual transcript sequences of the same gene can differ through naturally occurring variations (e.g. polymorphisms), each with its own valid existence. This clone is substantially in agreement with the reference, but a complete review of all prevailing variants is recommended prior to use. <a href="#">More info</a>
<b>OTI Annotation:</b>	This clone was engineered to express the complete ORF with an expression tag. Expression varies depending on the nature of the gene.
<b>Components:</b>	The ORF clone is ion-exchange column purified and shipped in a 2D barcoded Matrix tube containing 10ug of transfection-ready, dried plasmid DNA (reconstitute with 100 ul of water).
<b>Reconstitution Method:</b>	<ol style="list-style-type: none"> <li>1. Centrifuge at 5,000xg for 5min.</li> <li>2. Carefully open the tube and add 100ul of sterile water to dissolve the DNA.</li> <li>3. Close the tube and incubate for 10 minutes at room temperature.</li> <li>4. Briefly vortex the tube and then do a quick spin (less than 5000xg) to concentrate the liquid at the bottom.</li> <li>5. Store the suspended plasmid at -20°C. The DNA is stable for at least one year from date of shipping when stored at -20°C.</li> </ol>
<b>RefSeq:</b>	<a href="#">NM_145605.1</a> , <a href="#">NP_663580.1</a>
<b>RefSeq Size:</b>	2094 bp
<b>RefSeq ORF:</b>	1755 bp
<b>Locus ID:</b>	234825
<b>Cytogenetics:</b>	8 E1