

Product datasheet for **MG209115**

Slc17a6 (NM_080853) Mouse Tagged ORF Clone

Product data:

Product Type:	Expression Plasmids
Product Name:	Slc17a6 (NM_080853) Mouse Tagged ORF Clone
Tag:	TurboGFP
Symbol:	Slc17a6
Synonyms:	2900073D12Rik; DNPI; VGLUT2
Mammalian Cell Selection:	Neomycin
Vector:	pCMV6-AC-GFP (PS100010)
E. coli Selection:	Ampicillin (100 ug/mL)



[View online »](#)

ORF Nucleotide Sequence:

>MG209115 representing NM_080853
 Red=Cloning site Blue=ORF Green=Tags(s)

TTTTGTAATACGACTCACTATAGGGCGGCCGGAATTCGTCGACTGGATCCGGTACCGAGGAGATCTGCC
 GCC**CGGATCGCC**

ATGGAGTCGGTAAAAAAGGATTTTGGCCCCGGGAAAGAGGGGATAAAGAATTTTGTGGAAAATCCC
 TCGGACAGATCTACAGGGTGTGGAGAAGAAGCAGGACAACCGAGAGACCATCGAGCTGACAGAGGACGG
 TAAGCCCCCTGGAGGTGCCTGAGAAGAAGCTCCGCTATGCGACTGCACGTGCTTCGGCTGCCGCGCCGC
 TACATCATAGCCATCATGAGCGGCTCGGCTTCTGCATATCCTTCGGCATCCGCTGTAACCTGGCGGTGG
 CCATCGTGGACATGGTCAACAACAGCACTATCCACCGGAGGCAAAGTTATCAAGGAGAAAAGCCAAATT
 TAACTGGGACCCCGAGACCGTGGGGATGATCCACGGATCGTTCTTCTGGGGCTATATCATCACCCAGATT
 CCAGGAGGATATATCGCATCGCGGCTGGCTGCTAACCGGGTCTTTGGGGCTGCGATACTGCTCACCTCTA
 CCCTCAATATGCTGATCCCATCTGCAGCCAGAGTGCATTATGGATGTGCATCTTTGTTAGGATATTGCA
 AGGACTTGTGGAGGGTGCACCTACCCAGCCTGTCATGGGATATGGAGCAAGTGGCCCCCTCCCTGGAG
 AGGAGTAGGTTGGCTACAACCTCCTTTTGTGGTTCCTATGCTGGAGCAGTCAATTGCAATGCCCTTAGCTG
 GTATCCTTGTGCAGTACACTGGATGGTCTGTCAGTATTTTATGTGTATGGAAGCTTTGGCATGGTCTGGTA
 CATGTTCTGGCTTCTGGTGTCTTATGAGAGCCCTGCAAAGCATCCTACCATTACAGATGAAGAACGTAGG
 TACATAGAGGAGAGCATTGGAGAGAGCGCAAATCTGCTAGGTGCAATGGAAAAATTTAAGACCCCATGGA
 GGAAGTTTTTACATCCATGCCGCTACGCGATAATTGTTGCCAACTTCTGCAGGAGCTGGACTTTTTTA
 TTTACTGCTCATCAGTCAGCCAGCTTATTTTGGAGAGGTTTTTGGATTTGAAATCAGCAAGGTTGGCATG
 TTGTCTGCAGTCCCTCACCTTGTGCATGACAATCATTGTGCCTATCGGGGGCAAATTCAGATTTCTAA
 GGAGCAAGCAAATCTCTCAACAACACTACAGTGAAGAAAGATCATGAATTGTGGGGTTTTGGCATGGAAGC
 CAGCTGCTTCTGGTGTGGCTACTCTCATACTAGAGGGTGGCCATCTCCTTCTTGGTCTTGCAGTA
 GGATTCAGTGGATTTGCTATCTCTGTTTCAATGTTAATCACTTGGATATTGCTCCAAGATATGCCAGTA
 TCTTAATGGGCATTTCAAATGGCGTTGGCAGCTGTCGGGGATGGTTTGCCTATCATTGTTGGTGAAT
 GACAAAGAATAAGTCCCGTGAAGAATGGCAGTATGTCTTCTCATTGCTGCACTCGTCCACTATGGTGG
 GTCATATTTTATGCACTATTTGCCTCAGGAGAGAAACAACCTTGGGCAGACCCCTGAGGAAACAAGCGAAG
 AAAAATGTGGCTTCAATCACGAAGTGAAGTGAAGAAACGGGGGACATCACTCAGAATTACATAAA
 TTACGGTACCACCAAATCTACGGTGTACCTCACAGGAGAATGGAGGCTGGCCTAACGGCTGGGAGAAA
 AAGGAAGATTTGTGCAAGAAGTGCAGCAAGACCGGTACACCTATAAGGACCGAGATGATTATCA

AG**CGGACCG**ACGCGTACGCGGCCGCTCGAG - GFP Tag - GTTTAA

Protein Sequence:

>MG209115 representing NM_080853
 Red=Cloning site Green=Tags(s)

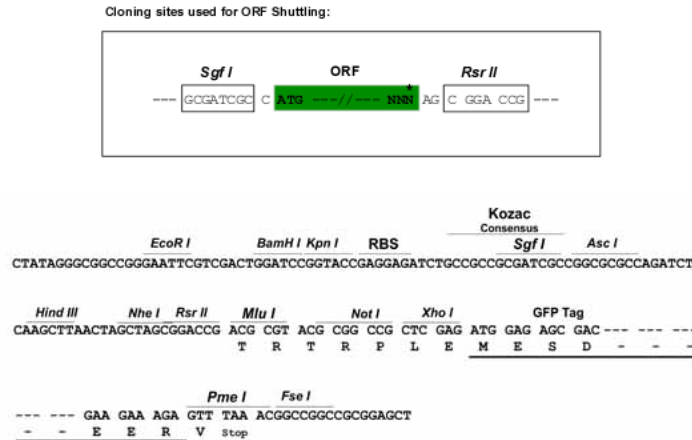
MESVKQRI LAPGKEGIKNFAGKSLGQIYRVLEKKQDNRETIELTEDGKPLEVPEKKAPLCDCTCFGLPRR
 YIIAIMSGLGFCISFGIRCNLGVAIVDMVNNSTIHRGGKVIKEKAKFNWDPETVGMIHGSFFWGYIITQI
 PGGYIASRLAANRVFGAAILLSTLNMLIPSAARVHYGCVIFVRILQGLVEGVTPACHGIWSKWAPPLE
 RSRLATTSFCGSYAGAVIAMPLAGILVQYTGWSSVFYVYGSFGMVWYMFLLVSYESPAKHPTITDEERR
 YIEESIGESANLLGAMEKFKTPWRKFFTSMPVYAIIVANFCRSWTFYLLLSQPAYFEEVFGFEISKVGM
 LSAVPHLVMTIIVPIGGQIADFLRSKQILSTTTVRKIMNCGGFMGMEATLLL VVGYSHTRGV AISFLVLAV
 GFSGFAISGFNVNHLDIAPRYASILMGISNGVGTLSGMVCP IIVGAMTKNKSREEWQYVFLIAALVHYGG
 VIFYALFASGEKQPWADPEETSEEKCGFIHEDELDEETGDITQNYINYGTTKSYGATSQENGGWPNGWEK
 KEEFVQEGAQDAYTYKDRDDYS

SGP**TRTRRLE** - GFP Tag - V

Restriction Sites:

Sgfl-RsrII

Cloning Scheme:



ACCN: NM_080853

ORF Size: 1746 bp

OTI Disclaimer: Due to the inherent nature of this plasmid, standard methods to replicate additional amounts of DNA in E. coli are highly likely to result in mutations and/or rearrangements. Therefore, OriGene does not guarantee the capability to replicate this plasmid DNA. Additional amounts of DNA can be purchased from OriGene with batch-specific, full-sequence verification at a reduced cost. Please contact our customer care team at custsupport@origene.com or by calling 301.340.3188 option 3 for pricing and delivery.

The molecular sequence of this clone aligns with the gene accession number as a point of reference only. However, individual transcript sequences of the same gene can differ through naturally occurring variations (e.g. polymorphisms), each with its own valid existence. This clone is substantially in agreement with the reference, but a complete review of all prevailing variants is recommended prior to use. [More info](#)

OTI Annotation: This clone was engineered to express the complete ORF with an expression tag. Expression varies depending on the nature of the gene.

Components: The ORF clone is ion-exchange column purified and shipped in a 2D barcoded Matrix tube containing 10ug of transfection-ready, dried plasmid DNA (reconstitute with 100 ul of water).

- Reconstitution Method:
1. Centrifuge at 5,000xg for 5min.
 2. Carefully open the tube and add 100ul of sterile water to dissolve the DNA.
 3. Close the tube and incubate for 10 minutes at room temperature.
 4. Briefly vortex the tube and then do a quick spin (less than 5000xg) to concentrate the liquid at the bottom.
 5. Store the suspended plasmid at -20°C. The DNA is stable for at least one year from date of shipping when stored at -20°C.

RefSeq: [NM_080853.3](#), [NP_543129.3](#)

RefSeq Size: 4338 bp

RefSeq ORF: 1749 bp

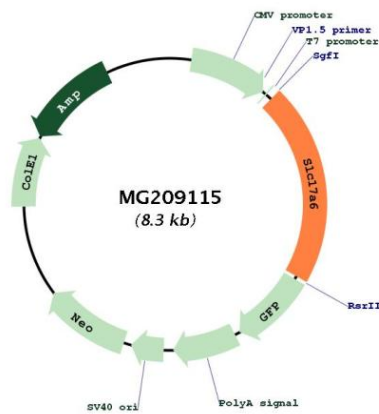
Locus ID: 140919

UniProt ID: [Q8BLE7](#)

Cytogenetics: 7 B4

Gene Summary: Mediates the uptake of glutamate into synaptic vesicles at presynaptic nerve terminals of excitatory neural cells. May also mediate the transport of inorganic phosphate.
[UniProtKB/Swiss-Prot Function]

Product images:



Circular map for MG209115