

## Product datasheet for **MG209108**

### **Fkbp10 (NM\_010221) Mouse Tagged ORF Clone**

#### **Product data:**

Product Type:	Expression Plasmids
Product Name:	Fkbp10 (NM_010221) Mouse Tagged ORF Clone
Tag:	TurboGFP
Symbol:	Fkbp10
Synonyms:	AI325255; FKBP-10; FKBP-65; Fkbp-rs1; Fkbp1-rs; Fkbp6; FKBP65; Fkbprp
Mammalian Cell Selection:	Neomycin
Vector:	pCMV6-AC-GFP (PS100010)
E. coli Selection:	Ampicillin (100 ug/mL)



[View online »](#)

**ORF Nucleotide Sequence:**

>MG209108 representing NM\_010221  
 Red=Cloning site Blue=ORF Green=Tags(s)

TTTTGTAATACGACTCACTATAGGGCGGCCGGAATTCGTCGACTGGATCCGGTACCGAGGAGATCTGCC  
 GCC**CGCATCGCC**

ATGTTCTTGTGGGGTCTCCAGCCACACCTCCATCGGCTCCGCATACTGCCGTTGCTGTGCTTCTAC  
 AGACCTTGAGAGGGGACTGGGCCGTGCCAGCCGGCCGAGCCCTTGGAAGATGTGGTCATCGAGAG  
 ATACCACATCCCTCGGGCTGTCCCGAGAAGTGCAGATGGGGATTTTGTGCGTTACCACTACAATGGC  
 ACTTTGAAAGACGGGAAAAAGTTTGACTCCAGCTATGACCGTAGCACCTGGTGGCCATCGTTGTGGCG  
 TAGGCCGCTCATCACCGCATGGACGGGGTCTCATGGGCATGTGTGTCAACGAGCGCCGCCCTCAT  
 TGTGCCTCCACCTGGCTACGGCAGCATCGGTGTGGCGGGCTCATCCCCCTGATGCCACCCTCTAT  
 TTTGACGTGGTCTGCTGGACGTGTGGAACAAAGCAGACCGGTGCAGTCAACTATCCTCTGCGCCCTC  
 CCTACTGCCCCGAATGGTGCAGAACAGTGACTTTGTGCGCTACTACTACAATGGCACTCTGCTGGATGG  
 CACTGCCTTTGACAACAGCTACAGTAGGGGAGGCACTTATGACACCTACATCGGCTCTGGTTGGCTGATC  
 AAAGGCATGGACAGGGGCTGCTGGGCATGTGCCCTGGAGAGAAAAGGAAGATCATTATCCCTCCCTCC  
 TGGCTTATGGGGAGAAAGGCTATGGGACTGTGATACCCCCGAGGCCCTCCCTGGTCTTCTATGTCCTGCT  
 GCTGGATGTCCACAACCCGAAGGACACGGTCCAGCTGGAGACGCTGGAGCTGCCCCAGGGCTGTGTCGG  
 CGAGCTGTGGCGGGGACTTCATGCGTTACCACTACAATGGCTCTTTGATGGATGGTACCCTCTTTGATT  
 CCAGCTACTCCCGAAACACACCTACAATACCTATGTCGGGCAGGGTTACATCATCCCTGGGATGGACCA  
 GGGGCTGCAAGGCGCATGCATAGGGGAGCGAAGGAGGATTAAGTGTGCCCTCACCTGCCTACGGGGAG  
 AATGGGACAGGAGACAAGATCCCTGGCTCGGCTGTGCTCATCTTCGATGTGCACGTCATCGACTCCACA  
 ACCCTTCGGACCCTGTGAAATCAAGACGCTGTCCCGCCCTCTGAGAAGTGAATGAGACATCCAAAAT  
 CGGGGACTTCATTCGCTACCACTACAACCTGTTCTCTGCTGGACGGCACAGGCTCTTCTCGTCCACGAC  
 TATGAGGCCCTCAAGAGATCACCTCGGAGCCAAACAAAGTGATCGAAGGCTGGACAGGGGCTGCAGG  
 GCATGTGTGTAGGAGAGAGGAGGAGCAGCTCATTGTCCCCACACCTGGCCACGGGGAGAATGGAGCCCG  
 GGGTGTCCCTGGCAGTGTGTGCTATTTGAGGTGGAGCTGGTATCCCGAGAGGATGGCTGCCACA  
 GGCTACCTGTTTGTGGTACCAGGATCCTTCCACTAGCCTTTTGAAGACATGGATCTCAATAAAGATG  
 GAGAGGTGCCCCAGAAGAGTTCTTCTTCCATCAAGGCTCAAGTGAATGAAGGCAAAGGACGCCTCAT  
 GCCTGGGCAAGACCCAGACAAAACCATCAGTGACATGTTTCAGAACAGGACCGGAACAGGATGGCAAG  
 ATCACAGCTGAGGAGCTCAAGCTGAAGTCAAGTGAAGTGAAGTGAAGTGAAGTGAAGTGAAGTGAAGT

**ACGCGT**ACGCGGGCCGCTCGAG - GFP Tag - GTTTAA

**Protein Sequence:**

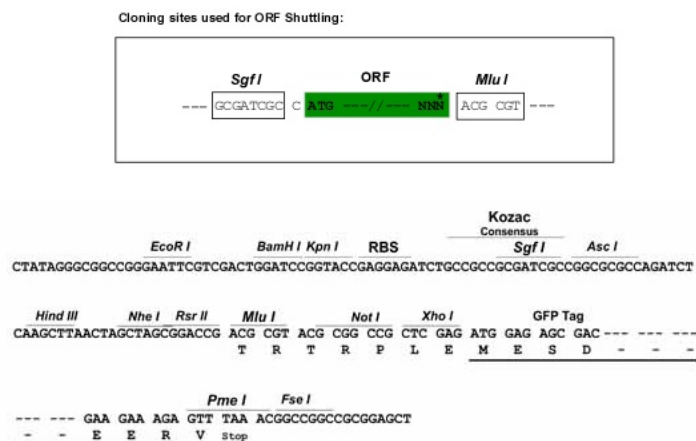
>MG209108 representing NM\_010221  
 Red=Cloning site Green=Tags(s)

MFLVGSSTLHRLRILPLLLLLQTLERGLGRASPAGAPLEDVVIERYHIPRACPREVQMGDFVRYHYNG  
 TFEDGKKFDSSYDRSTLVAIVVGVGRLITGMDRGLMGMVCNERRRILVPPHLGYGSIGVAGLIPPDATLY  
 FDVLLDVWNKADTVQSTILLRPPYCPRMVQNSDFVRYHYNGTLLDGTAFDNSYSRGGTYDYIYSGWLI  
 KGMDQGLLGMCPGEKRKIIIPFFLAYGEGYGTVIPPQASLVFYVLLLDVHNPKDTVQLETLELPQGCVR  
 RAVAGDFMRYHYNGSLMDGTLFDSSYSRNHTYNTYVQGYIIPGMDQGLQGACIGERRRITVPPHLAYGE  
 NGTGDKIPGSAVLIFDVHVIDFHNPSDPVEIKTLRPPENCNETSKIGDFIRYHYNCSLLDGTRLFSSHD  
 YEAPQEITLGANKVIEGLDRGLQGMCVGERRQLVPPHLAHGENGARGVPGSAVLLFEVELVSREDGLPT  
 GYLFVWYQDPSTSLFEDMDLNKDGVEPPEEFSSF IKAQVNEGKGRMPGQDPDKTISDMFQNDQDRNDGK  
 ITAEELKLSDEDQERVHEEL

**TRTRPLE** - GFP Tag - V

**Restriction Sites:**

SgfI-MluI

**Cloning Scheme:**


**ACCN:** NM\_010221

**ORF Size:** 1743 bp

**OTI Disclaimer:** The molecular sequence of this clone aligns with the gene accession number as a point of reference only. However, individual transcript sequences of the same gene can differ through naturally occurring variations (e.g. polymorphisms), each with its own valid existence. This clone is substantially in agreement with the reference, but a complete review of all prevailing variants is recommended prior to use. [More info](#)

**OTI Annotation:** This clone was engineered to express the complete ORF with an expression tag. Expression varies depending on the nature of the gene.

**Components:** The ORF clone is ion-exchange column purified and shipped in a 2D barcoded Matrix tube containing 10ug of transfection-ready, dried plasmid DNA (reconstitute with 100 ul of water).

**Reconstitution Method:**

1. Centrifuge at 5,000xg for 5min.
2. Carefully open the tube and add 100ul of sterile water to dissolve the DNA.
3. Close the tube and incubate for 10 minutes at room temperature.
4. Briefly vortex the tube and then do a quick spin (less than 5000xg) to concentrate the liquid at the bottom.
5. Store the suspended plasmid at -20°C. The DNA is stable for at least one year from date of shipping when stored at -20°C.

**RefSeq:** [NM\\_010221.2](#), [NP\\_034351.2](#)

**RefSeq Size:** 2619 bp

**RefSeq ORF:** 1746 bp

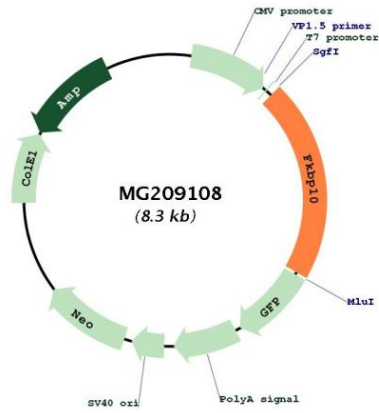
**Locus ID:** 14230

**UniProt ID:** [Q61576](#)

**Cytogenetics:** 11 63.47 cM

**Gene Summary:** PPIases accelerate the folding of proteins during protein synthesis.[UniProtKB/Swiss-Prot Function]

**Product images:**



Circular map for MG209108