

Product datasheet for **MG209101**

Sppl2c (NM_001082535) Mouse Tagged ORF Clone

Product data:

Product Type:	Expression Plasmids
Product Name:	Sppl2c (NM_001082535) Mouse Tagged ORF Clone
Tag:	TurboGFP
Symbol:	Sppl2c
Synonyms:	4933407P14Rik; IMP5
Mammalian Cell Selection:	Neomycin
Vector:	pCMV6-AC-GFP (PS100010)
E. coli Selection:	Ampicillin (100 ug/mL)



[View online »](#)

ORF Nucleotide Sequence:

>MG209101 representing NM_001082535
 Red=Cloning site Blue=ORF Green=Tags(s)

TTTTGTAATACGACTCACTATAGGGCGGCCGGGAATTCGTCGACTGGATCCGGTACCGAGGAGATCTGCC
 GCC**CGGATCGCC**

ATGGCATGCCTGGGTTCCCTCCACCCCTTGGGCTCACTCCTCCTCTTCTCCTCCTCCTCCTCAGCC
 CCGAGGCCCGGGGAGAATACGGCCTGGTCCGAGTCGTGTCAAAGAACTGGAGCAAGGACTACTGTGTCT
 GTACAGCTCTGACTACGTCAACCTCCCCGGGACCTGCACCATGCCCCACTTCTGTCCCTGCATGATGGC
 ACCAAGACACCCTGGTGTCCAGATGAAGACTCTTCCACCAGGCCAGGACAGTCCCCTAGACAGCGAC
 CCCTGCACCAGACTACTACCATGGTCACGCGTGGCAACTGTAGCTTCTATGCCAAGGGCTGGCTGGCTCA
 AGATCAAGGGCGCCAGGGGTTGCTCATTGTGAGCCGGCCAGGAATCAACAGTGTTCAGACACCATCTCA
 AAGCCCCAGGACCCAGCAAGCCCTGGCCTGCCCTCACCATCCCAGTGGCCGTGCTCCGCTACACTGACA
 TGTTGGACATTGTAGCCACACTTACGGTGACACCGATGTCGAGTAGCCATGTTTGACCCCTCGAGCC
 TGTTACTGACTATAACATGGCGATTATCTTCATCTTGGCAGTGGGACTGTTGCTGCAGGTGGCTACTGG
 GCTGGTTTGATGGAGGCAACAAGCTGCAGAGGCCAGGCCAAAGAGGAGGGGGCTTGGTGGTCACA
 ATCAACAACAACAGTGGCAGCTGAGAGGTCCCAAAGGGCCTGGGAAGATGACGACTTTGAAGATGCACC
 TATGGATTTACACCAGCCATGACGGGCGCTGTGGTACCATGTCCTGCTCCATCATGATCCTGCTGTAT
 TTTTCTATGACTGCTTTGTCTACGTATGATTGGGATCTTAGCCTGGGTGCCAGTACCGGCTCTACA
 GCTGCCTGGCACCCATACTGTGCCACCTGCCCTATGGCGATACCAGTGGGTCTTGCCTGGACAACGGGT
 TTCTGTAACATGGCCATTACTACTGTGGCAGGCTGTGTGCCATGGTACTGCTCCTCTGGGTCACTCCAC
 CGAAATGAGGACCATGGGCATGGCTCCTGCAGGACACTTGGGTGTCGCCTACTGCCTTTTGTCTGTA
 GCGCGGTACGGCTGCCACGTTCAAGAAGCTCACTTTGTTCTGCTGGCCCTACTAGCCTCGATGCTCT
 CTTTGTCTTTATCACTCCCTGTTCAACAAGACTGGTGGAGCATTATGGTAGAAGTGGCATCAGGTCCA
 GCAGATTTCTCAAGCCACGAGAGGTTACCAATGGTGTCAAGGTGCCCGGCTAAGCTTTCCGCTTGA
 CGTTGTGCAACCAGCCCTTCTCCATCCTTGGCTTGGGGACATTGTTGCTCCTGGCTTCTAGTGGCCTA
 CTGTCACCGCTTCGACATGCAAGTCCAATCTCGCCAGGCTACTATATGGCCTGTACAGTGGCCTATGCC
 GTGGGCTGCTGGTACCTTTGTCGCCATGATCCTCATGCAGATGGGCCAGCCTGCCCTGCTCTACTTAG
 TGTCACGACTCTGCTCACCAGCCTGCTGTGGCCACCTGCCCAAGAGTTCACCCTTTCTGGACTGG
 CCAGGGCAGAGCCAAGATTCTGCTGAGCCTGTGGCACAGCCCTGCATTGCCTGCTGTGGGCTCCAAG
 ATGAAGCTGGAGGATGCGAAGGATTCCTGTACAACCAACAGGATGCTGAGGAAGATTTGTG

AG**CGGACCG**ACGCGTACGCGGCCGCTCGAG - GFP Tag - GTTTAA

Protein Sequence:

>MG209101 representing NM_001082535
 Red=Cloning site Green=Tags(s)

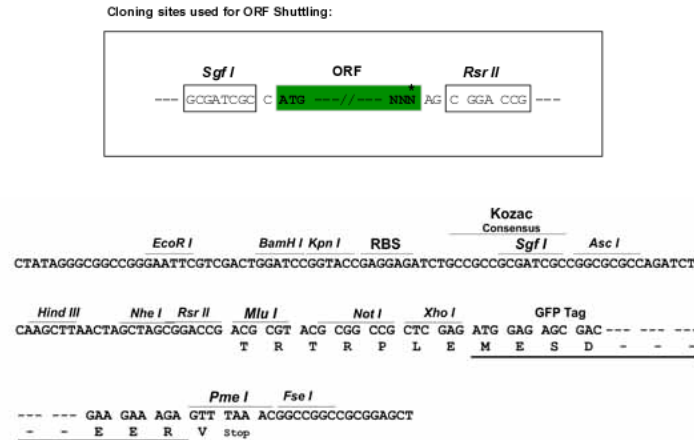
MACLSLHPLGSLLLLFLLLLLSPEARGEYGLVVRVSKNWSKDYCVLYSSDYVNLPRDLHHPALLSLHDG
 TKTPWCPDEDSFHQAQDSSPRQRPLHQTTMVTRGNCSFYAKGWLAQDQGAQGLLIVSRARNQCCSDTIS
 KPQDPSKPWPALTIIPVAVLRYTDMLDIVSHTYGDTDVVRVAMFAPLEPVTDYNMAIIFILAVGTVAAGGYW
 AGLMEANKLQRRQAQRGGGLGGHNQQQTVAEERSQRAWEDDDFEDAPMDFTPAMTGAVVTMSCSIMILLY
 FFYDCFVYVMIGIFSLGASTGLYSCLAPILCHLPLWRYQWVLPQQRVSVTWPLLLLAGLCAMVTVLWVIH
 RNEDHWAWLLQDTLGVAYCLFVLRRLPTFKNCTLFLLALLAFDVFFVITPLFTKTGESIMVEVASGP
 ADSSSHERLPMVLKVPRLSFSALTLGNQPF SILGFDIVVPGFLVAYCHRFDMMQVSRQVYVMACTVAYA
 VGLLVTFVAMILMQMQPALLYLVSSLLTSLAVATCRQEFTLFWTQGRAKIPAEPVAQPCIASAVGSK
 MKLEDAKDSRTTNRMPEDFV

SGP**TRRRLE** - GFP Tag - V

Restriction Sites:

Sgfl-RsrII

Cloning Scheme:



ACCN: NM_001082535

ORF Size: 1743 bp

OTI Disclaimer: The molecular sequence of this clone aligns with the gene accession number as a point of reference only. However, individual transcript sequences of the same gene can differ through naturally occurring variations (e.g. polymorphisms), each with its own valid existence. This clone is substantially in agreement with the reference, but a complete review of all prevailing variants is recommended prior to use. [More info](#)

OTI Annotation: This clone was engineered to express the complete ORF with an expression tag. Expression varies depending on the nature of the gene.

Components: The ORF clone is ion-exchange column purified and shipped in a 2D barcoded Matrix tube containing 10ug of transfection-ready, dried plasmid DNA (reconstitute with 100 ul of water).

Reconstitution Method:

1. Centrifuge at 5,000xg for 5min.
2. Carefully open the tube and add 100ul of sterile water to dissolve the DNA.
3. Close the tube and incubate for 10 minutes at room temperature.
4. Briefly vortex the tube and then do a quick spin (less than 5000xg) to concentrate the liquid at the bottom.
5. Store the suspended plasmid at -20°C. The DNA is stable for at least one year from date of shipping when stored at -20°C.

RefSeq: [NM_001082535.1](#), [NP_001076004.1](#)

RefSeq Size: 2250 bp

RefSeq ORF: 1746 bp

Locus ID: 237958

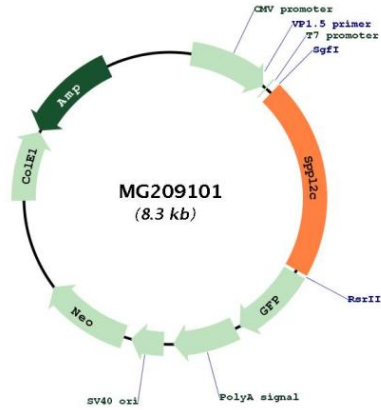
UniProt ID: [A2A6C4](#)

Cytogenetics: 11 E1

Gene Summary:

Intramembrane-cleaving aspartic protease (I-CLiP) that may be able to cleave type II membrane signal peptides in the hydrophobic plane of the membrane.[UniProtKB/Swiss-Prot Function]

Product images:



Circular map for MG209101