

Product datasheet for **MG209083**

Igf2bp3 (NM_023670) Mouse Tagged ORF Clone

Product data:

Product Type:	Expression Plasmids
Product Name:	Igf2bp3 (NM_023670) Mouse Tagged ORF Clone
Tag:	TurboGFP
Symbol:	Igf2bp3
Synonyms:	2610101N11Rik; AA522010; AL022933; AU045931; IMP-3; IMP3; Koc13; mimp3; Neilsen
Mammalian Cell Selection:	Neomycin
Vector:	pCMV6-AC-GFP (PS100010)
E. coli Selection:	Ampicillin (100 ug/mL)



[View online »](#)

ORF Nucleotide Sequence:

>MG209083 representing NM_023670
 Red=Cloning site Blue=ORF Green=Tags(s)

TTTTGTAATACGACTCACTATAGGGCGGCCGGAATTCGTCGACTGGATCCGGTACCGAGGAGATCTGCC
 GCC**CGGATCGCC**

ATGAACAAATTGTACATCGGGAACCTCAGCGACCACGCCGCCCGCGGACCTGAAAGTGTCTTCAAGG
 ACGCTAAGATCCCGGTGGCGGGCCCTTCTGGTGAAGACGGGCTACGCGTTCGTGGACTGCCCGGACGA
 GGGCTGGGCCCTCAAGGCCATCGAGGCGCTTTCAGGTAATAATGGAACACATGGGAAACCGATGGAAGTT
 GAGCACTCGGTCCCTAACCGGCAGAGGATTCGTAACCTCAGATACGAAATATCCCGCCCACTTACAAT
 GGGAGGTGCTGGATAGTTTACTAGTCCAGTATGGAGTGGTGGAGAGCTGTGAGCAAGTGAACACGGATTC
 GGAACCGCAGTTGTAATGTAACCTATCCAGTAAGGACCAAGCTAGACAAGCCTTAGACAAAATGAAT
 GGATCCAGTTAGAGAACTTACCTTGAAGTTGCCTACATCCAGATGAAACTGCTGCCAGCAAAATC
 CCTCGCCACAGCTCCGGGGCGCCGGGGCCAGGGCAGCGGGCTCATCCAGGCAGGCGTCTCCAGGATC
 GGTGTCCAAGCAGAAACCTGTGACCTGCCACTGCGCCTGCTGGTCCCACCCAGTTTGTGGAGCCATT
 ATAGGAAAAGAAGGTGCTACCATTTCGCAACATCACAAGCAGACCAGTCTAAAAATCGATGTCCATCGTA
 AGGAGAATACAGGGGCCGCGGAGAAGTCCATTACTATCCTCTCTACCCCTGAAGGCACCTCTGCAGCTTG
 TAAGTCTATTCTGGAGATTATGCATAAGGAAGCTCAAGATATAAAATTCACAGAGGAGATTCCTTGAAG
 ATCTTAGCTCACAATAACTTTGTAGGCCGTCTCATTGGTAAAGAAGGAAGAAACCTTAAAAAATCGAGC
 AAGACACGGACACTAAAATCACAATATCTCCATTGCAGGAAGTACGCTGTACAATCCGGAACGCACCAT
 TACAGTGAAGGCAGTGTGAGACGTGTCCAAGGCGGAGGAGGAAATATGAAGAAGATCAGGGAGTCT
 TATGAAAATGATATTGCTTCCATGAATCTTCAAGCACATTTAATCCCTGGATTAATCTGAATGCCTTGG
 GTCTGTTCCACCCACGTCAGGGATGCCACCTCCACCTCAGGGCCCCCTCAACCTGACTCCTCCCTA
 CCCGAAATTTGAGCAATCAGAGACGAGACTGTGCATCTGTTTATCCCGCCTGTCCGTTGGCGCCATC
 ATTGGCAAGCAGGGCCAACACATCAAACAGCTTCTCGCTTTCGCGGAGCTTCGATTAAGATCGCTCCAG
 CCGAAGCACCAGATGCTAAAGTGCAGTGGTATTACTGACCACCAGAGGCTCAGTTCAAGGCTCA
 GGAAGAATTTATGAAAAATTAAGAAGAAAATTTGTTAGTCTAAAGAAGAGGTGAAACTTGAAGCT
 CACATCAGAGTCCGCTCCTTGTGCTGGCAGAGTTATTGGAAAGGAGGCAAAACGGTGAATGAGCTCC
 AGAGTTTATCAAGTGTGAAGTTGCTGCTCCCGTGACCAGACACCTGATGAGAATGATCAAGTAGTTGT
 CAAAATAACTGGCACTTCTATGCTTGCAGGTTGCCAGAGGAAAATTCAGGAAATTCGACTCAGGTA
 AAGCAGCACCAGCAGCAAAGCTCTGCAGAGTGACCACCTCAGTCAAGCGGAAG

AG**CGGACCG**ACGCGTACGCGGCCGCTCGAG - GFP Tag - GTTTAA

Protein Sequence:

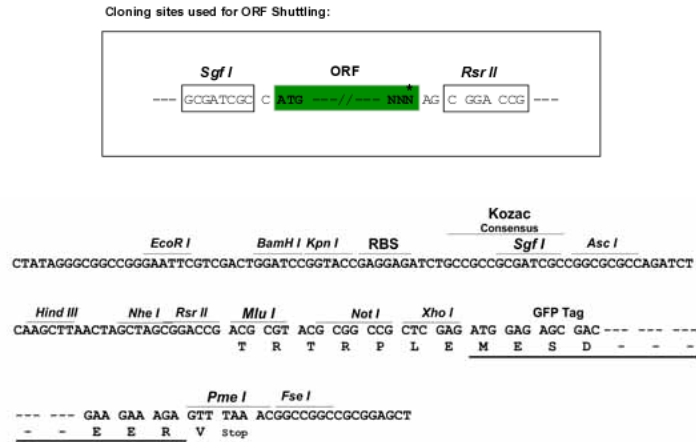
>MG209083 representing NM_023670
 Red=Cloning site Green=Tags(s)

MNKLYIGNLSDHAGPADLESVFKDAKIPVAGPFLVKTGYAFVDCPDEGWALKAIKALSGKMEHLHGKPMEV
 EHSVPKRQRIRKLQIRNIPPHLQWEVLDSLLVQYGVVSECEQVNTDSETAVVNVYSSKDQARQALDKLN
 GFQLENFTLKVAYIPDETAQQNPSPQLRGRGPGQRGSSRQASPGSVSKQKPCDLPLRLLVPTQFVGA
 IGKEGATIRNITKQTSKIDVHRKENTGAAEKSTITLSTPEGTSAACKSILEIMHKEAQDIKFTEEIPLK
 ILAHNNFVGRLLIGKEGRNLKIEQDQDTKITISPLQELTLNPERTITVKGSVETCAKEEEEIMKKIRES
 YENDIASMNLQAHLIPGLNGLFPPTSGMPPPTSGPPSTLTPYPQFEQSETETVHLFIPALSVGAI
 IGKQGHQIKQLSRFAGASIKIAPAEAPDAKVRMVIITGPPEAQFKAQGRIGYKIKIENFVSPKKEVKLEA
 HIRVPSFAAGRVIGKGGKTVNELQSLSSAEVVVPRDQTPDENDQVVVKITGHFYACQVAQRKIQEILTQV
 KQHQQKALQSGPPQSRRK

SGP**TRTRRLE** - GFP Tag - V

Restriction Sites:

Sgfl-RsrII

Cloning Scheme:


ACCN: NM_023670

ORF Size: 1737 bp

OTI Disclaimer: Due to the inherent nature of this plasmid, standard methods to replicate additional amounts of DNA in E. coli are highly likely to result in mutations and/or rearrangements. Therefore, OriGene does not guarantee the capability to replicate this plasmid DNA. Additional amounts of DNA can be purchased from OriGene with batch-specific, full-sequence verification at a reduced cost. Please contact our customer care team at custsupport@origene.com or by calling 301.340.3188 option 3 for pricing and delivery.

The molecular sequence of this clone aligns with the gene accession number as a point of reference only. However, individual transcript sequences of the same gene can differ through naturally occurring variations (e.g. polymorphisms), each with its own valid existence. This clone is substantially in agreement with the reference, but a complete review of all prevailing variants is recommended prior to use. [More info](#)

OTI Annotation: This clone was engineered to express the complete ORF with an expression tag. Expression varies depending on the nature of the gene.

Components: The ORF clone is ion-exchange column purified and shipped in a 2D barcoded Matrix tube containing 10ug of transfection-ready, dried plasmid DNA (reconstitute with 100 ul of water).

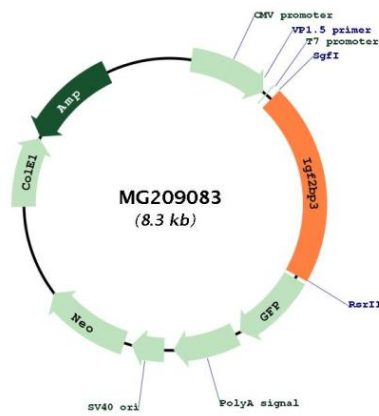
Reconstitution Method:

1. Centrifuge at 5,000xg for 5min.
2. Carefully open the tube and add 100ul of sterile water to dissolve the DNA.
3. Close the tube and incubate for 10 minutes at room temperature.
4. Briefly vortex the tube and then do a quick spin (less than 5000xg) to concentrate the liquid at the bottom.
5. Store the suspended plasmid at -20°C. The DNA is stable for at least one year from date of shipping when stored at -20°C.

RefSeq: [NM_023670.3](#)
 RefSeq Size: 4100 bp
 RefSeq ORF: 1740 bp
 Locus ID: 140488
 UniProt ID: [Q9CPN8](#)
 Cytogenetics: 6 23.82 cM

Gene Summary: RNA-binding factor that may recruit target transcripts to cytoplasmic protein-RNA complexes (mRNPs). This transcript 'caging' into mRNPs allows mRNA transport and transient storage. It also modulates the rate and location at which target transcripts encounter the translational apparatus and shields them from endonuclease attacks or microRNA-mediated degradation. Binds to the 3' UTR of CD44 mRNA and stabilizes it, hence promotes cell adhesion and invadopodia formation (By similarity). Binds to beta-actin/ACTB and MYC transcripts (By similarity). Binds to the 5'-UTR of the insulin-like growth factor 2 (IGF2) mRNAs. [UniProtKB/Swiss-Prot Function]

Product images:



Circular map for MG209083