

Product datasheet for **MG209074**

Acsm5 (NM_178758) Mouse Tagged ORF Clone

Product data:

Product Type:	Expression Plasmids
Product Name:	Acsm5 (NM_178758) Mouse Tagged ORF Clone
Tag:	TurboGFP
Symbol:	Acsm5
Synonyms:	C730019D22; C730027J19Rik
Mammalian Cell Selection:	Neomycin
Vector:	pCMV6-AC-GFP (PS100010)
E. coli Selection:	Ampicillin (100 ug/mL)



[View online »](#)

ORF Nucleotide Sequence:

>MG209074 representing NM_178758
 Red=Cloning site Blue=ORF Green=Tags(s)

TTTTGTAATACGACTCACTATAGGGCGGCCGGAATTCGTCGACTGGATCCGGTACCGAGGAGATCTGCC
 GCC**CGCATCGCC**

ATGAGGTTGTGGCTAAGAGGCCTGGCCTGCCAGGCTCTGAGGAGTTCCTGGGGAGTCTGCAGGATTCA
 CACAGCCACCACCTCCCCGATCCCTGAGGTGGTAGCTACCTGGGAAGCCATCAGCCTGGGGAGGCAGCC
 AGTGCCCCGAGTACTTCAACTTTGCTCATGATGTGTTGGATGTGTGGAGTCACTGAAAAAGACAGGGCAC
 CGGCCCCCAATCCTGCATTCTGGTGGGTGAACGGCTCAGGAACAGAAGTCAAGTGGACATTTGAGGAGC
 TGGGGAAGCAGTCGAGGAAGGCAGCCAATGTCTTAGAGGGTGTGTGGCCTGCAACCTGGAGACAGAAT
 GATGCTGGTGCTCCGAGACTCCAGATTGGTGGCTGATCAGCGTGGCTTGTATGCGAACAGGTGTGGTC
 ATGATCCCAGGAGTCTCCAGCTGACAGCGAAGGATCTCAAGTATCGGCTGCAGGCTGCCAGGGCCAAGT
 CTATCGTACCAGTGTGCCCTAGCTCCGAAGTGGATGCCATCAGTGTGACTGTCCCTCCCTCCAAC
 CAAGTCTTGGTGTCTGACACCAGCCGTCCAGGCTGGATCAATTCGAGAAGTCTGAGAGCGGCTTCT
 CCAGAGCACAAGTGTGTGAGAACCAGAAGTGGAGATTCAGTGGCCATCTACTTCACCAGTGAACCCAG
 GGGCCCCAAGATGGTGGAACTTCCAGTCCAGCTATGGATTGGGTTTTGTGGCCAGTGAAGGAGGTG
 GATGGCCTTGACTGAGTCTGACATATTCTGGAACACAAGTACTGACTGGATGGGTGAAAGCAGCCTGGACC
 CTCTTCTGCTGGTCCAATGGAGCTTGCAATTTTGTGCATGAGCTGCCCGAGTTGATGCCAAAATA
 TTCTAAATACTCTCTGCAGGTTCCCAATAACCACCCTGTGCTGTGTCCCAACCCTTCCGGCTGCTTGT
 ACAAGAGGATCTGACAAGGTACAAGTCCAATGTCTGAGGCAGTGTGACGGGTGGAGAGGCCCTCAAC
 CCTGATGTGAGGGACAAGTGAAGAGCCAGCAGGCCCTGGAGTCCATGAAGGCTATGGACAATCAGAAA
 CAGTTGTGATCTGTGGCAATTAAGAACTCGACAATCAAGTCTGGATCTATGGGGAAAGCAAGCCACC
 TTACGATGTGCAGATTGTAGATGAGGAGGCAATGTCTGCTCCAGGAAAAGAGGAAAATATTGCTGTC
 CGAATCAAGCCTACTAGACCCTTCTGTTTCTTCAACTGCTATCTGGACAATCCCGAGAAGACAGCAGCAT
 CAGAGCAAGGAGACTTTTACATCACTGGGGACAGAGCACATATGGACGAGGATGGCTACTTTTGGTCTT
 GGGGAGAAATGATGATGTAATCAACTCTTCAAGTACCGGATTGGTCTGTTGAAGTAGAGAGTGCCTT
 GCTGAGCATCCAGCTGCTCTGGAGTCTGCTGTGGTCCAGCAGCCAGCCCATCCGGGGAGAGGTGGTAA
 AGGCATTTATAGTCTTCTCCAGCCTATGCATCTCATGACCCAGAAGCCCTGACCAGGGAAGTCCAGGA
 GCATGTGAAGACAGTACTGCTCCATACAAGTACCCAGGAAGGTGGCTTTTATTTCAGAAGTCCAAAG
 ACGGTTTCTGAAAGATCCTAAGGAGTAAATTGAGAAACCAAGAGTGGGGGAGA

ACGCGTACGCGGCCGCTCGAG - GFP Tag - GTTTAA

Protein Sequence:

>MG209074 representing NM_178758
 Red=Cloning site Green=Tags(s)

MRLWLRGLACQALRSSWGVCRITHTQPPPPPIPEVVATWEAISLGRQPVEYFNFAHDVLDVVSQLEKTH
 RPPNPAFWVWVNGSGTEVKWTFEELGKQSRKAANVLEGVCLQPGDRMMLVLPRLPDWWLISVACMRGTGV
 MIPGVSQLTAKDLKYRLQAARAKSIVTSDALAPQVDAISADCPSTLQKLLVSDTSRPGWINFRELLRAAS
 PEHNCVTRSGDSVAIYFTSGTTGAPKMEHSQSSYGLGFVASGRRMALTESDIFWNTTDTGWVKAAWT
 LFSAWSNGACIFVHELPRVDAKTILNLCRFPITTLCCVPTLFRLLVQEDLTRYKFQCLRHCLTGGEALN
 PDVRDKWKSQTGLELHEGYGQSETVVICGNSRSTIKSGSMGKASPPYDVQIVDEEGNVLPPGKEGNIIV
 RIKPTRPFCFFNCYLDNPEKTAASEQGDFYITGDRAHMDDEGYFWFLGRNDDVINSSSYRIGPVEVESAL
 AEHPAVLESADVSSPDPVIRGEVVKAFIVLSPAYASHDPEALTRELQEHVKTVTAPYKYPRKVAFISELPK
 TVSGKILRSKLRNQEWR

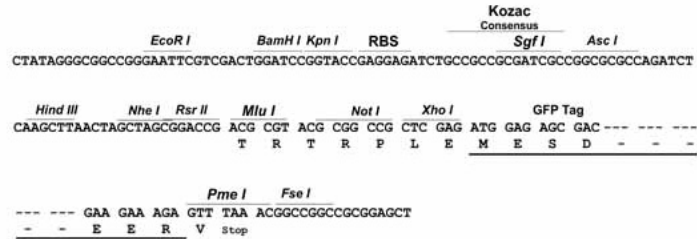
TRTRPLE - GFP Tag - V

Restriction Sites:

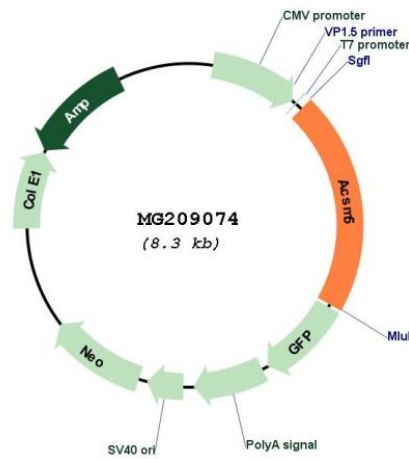
Sgfl-MluI

Cloning Scheme:

Cloning sites used for ORF Shutting:



Plasmid Map:



ACCN: NM_178758
 ORF Size: 1734 bp

OTI Disclaimer:	The molecular sequence of this clone aligns with the gene accession number as a point of reference only. However, individual transcript sequences of the same gene can differ through naturally occurring variations (e.g. polymorphisms), each with its own valid existence. This clone is substantially in agreement with the reference, but a complete review of all prevailing variants is recommended prior to use. More info
OTI Annotation:	This clone was engineered to express the complete ORF with an expression tag. Expression varies depending on the nature of the gene.
Components:	The ORF clone is ion-exchange column purified and shipped in a 2D barcoded Matrix tube containing 10ug of transfection-ready, dried plasmid DNA (reconstitute with 100 ul of water).
Reconstitution Method:	<ol style="list-style-type: none">1. Centrifuge at 5,000xg for 5min.2. Carefully open the tube and add 100ul of sterile water to dissolve the DNA.3. Close the tube and incubate for 10 minutes at room temperature.4. Briefly vortex the tube and then do a quick spin (less than 5000xg) to concentrate the liquid at the bottom.5. Store the suspended plasmid at -20°C. The DNA is stable for at least one year from date of shipping when stored at -20°C.
RefSeq:	NM_178758.3 , NP_848873.1
RefSeq Size:	2505 bp
RefSeq ORF:	1737 bp
Locus ID:	272428
UniProt ID:	Q8BGA8
Cytogenetics:	7 F2
Gene Summary:	Has medium-chain fatty acid:CoA ligase activity with broad substrate specificity (in vitro). Acts on acids from C(4) to C(11) and on the corresponding 3-hydroxy- and 2,3- or 3,4-unsaturated acids (in vitro) (By similarity).[UniProtKB/Swiss-Prot Function]