

Product datasheet for **MG209071**

Slc15a3 (NM_023044) Mouse Tagged ORF Clone

Product data:

Product Type:	Expression Plasmids
Product Name:	Slc15a3 (NM_023044) Mouse Tagged ORF Clone
Tag:	TurboGFP
Symbol:	Slc15a3
Synonyms:	cl-1; Ci1
Mammalian Cell Selection:	Neomycin
Vector:	pCMV6-AC-GFP (PS100010)
E. coli Selection:	Ampicillin (100 ug/mL)



[View online »](#)

ORF Nucleotide Sequence:

>MG209071 representing NM_023044
 Red=Cloning site Blue=ORF Green=Tags(s)

TTTTGTAATACGACTCACTATAGGGCGGCCGGAATTCGTCGACTGGATCCGGTACCGAGGAGATCTGCC
 GCC**CGCATCGCC**

ATGCTGCCCTCGCGCGGAAGAGCAACCAAGCAGGTCCGGAGAGCGACAACCGCTGGTGGCCCGAGGCC
 CGCGGGGACCACGACGGTGGAGACGGACAGCTGCTGCTGCGGTGCTGCTAGTGCAGATGCTGGAACGCGC
 TGCCCTTTTGGTGTCACTCCAACCTCGTCTACCTCAACAGCTTGAATTCAATTGGGACGGCCAA
 CAGGCATACGGGCCACACTCCTCTTCTAGGCGCCTCTACCTGCTGGCTCCAGTGGGGGGCTGGCTGG
 CAGACGTGTACCTGGGACGCTTCTCACTATCTCGCTCAGCCTGCTGCTATCTGGCTGCCTCTGGCTT
 GTTGCTCACCACCATACCAATGATGGCCGAGATCCTTCTGTGGAGAGATGCCCGAGTTGCCACTGGAA
 CCTGCCTGCCATCCTCAAGCTGCCAAGGCTCCTGGTCCAGCCCCTACTGCGGACCACCCTCTACTTGG
 TGTGCTGCTCCTGGCCCTGGTCCAGCTCCGTACAGGACACCCTCACCTCGTTCGGGGCTGACCAGGT
 GATGGATCTCGGGCGGATGCCACCCGCGCTTCTCAACTGGTCTATTGGAGCATCAACTGGGTGCC
 ATATTGCTCCTGTTGGTGGTGGCTTTCATCGAGCAGAATCAGCTTCTATGGGGCTACAGCATCATCG
 TGGGCCTCGTGGGCTGGCATTCTCATTTTTCTTTGGCCACACCAGTCTTCATACCAAGCCCCAAC
 AGGCAGCAAGTGTATCTATGCTGAAGCTTGCCTTCAAACACTGCTGTCCCTGCCGGAGGTCTCTTCC
 AGGGACTCTGAAAGTGCCACCTGTTGCCTGACCAGAGGTCTAACAGCCTGGACCTTCTCCACAAGAAG
 ATATGGCCAACCTCCAGGTGCTGGTGAAGATCCTGCCTGTGATGGTGACCCTTGTGCCTATTGGATGGT
 ATATTTCCAGATGCAGTCCACCTATGCTCCTCAAGGTCTCCACCTCCATATCCCCAACATCTTCAGGACC
 AACCTAACATCTCTTTGTTGCTGAGATCAGATAGCAGTAACACAGGATCCCAGAAGCCTGGCTGCTAC
 TGGCCAATGTTGGGTGATCCTGATTCTGATCCCTGTCAAGGATCACTTGATTGATCCTCTGCTGCG
 GTGCAAGCTGCTGCCCTCATCTCTGCAGAAAATGGCCCTGGGCATGTTCTTTGGGTTACCTCCATCATT
 GTGGCAGGAGTCTGGAGAAAGAACGCTTACAGTACATTGCTGCCAACCCAGACAGTGCCTCAGCTGATTG
 GGAAGGACTTATACTATGCAGCGCCACTGTCTATCTGGTGGCAGATCCCCAGTACCTGCTCATCGGGGT
 CAGTGAGATCTTGGCAGCATCCAGGTCTGGAGTTGCTTACTCAGAAGCCCCACGCTCCATGCAGGGT
 GCAATTATGGGCATCTTCTTCTGCCTTTCGGGGTGGGCTCACTGCTAGGCTCTGGCTTGGTGGCCCTAC
 TGTCTTTCTGGGGCTGGATGTACTGCCCAAGGACTTTGGGAACATCAACAAGTGCAGATGGACCG
 TTACTTCTTCTGCTGGCCGCATTGAGGCTGTACAGCCGCTCTGTTTCTCTGGATTGCTGGTCTGCTAT
 GAGAGGACTCGCCAGGACCCAGCCTCCCAGCGCTCGTCCAGCAGGGTCCAGAGGC

ACGCGTACGCGGCCGCTCGAG - GFP Tag - GTTTAA

Protein Sequence:

>MG209071 representing NM_023044
 Red=Cloning site Green=Tags(s)

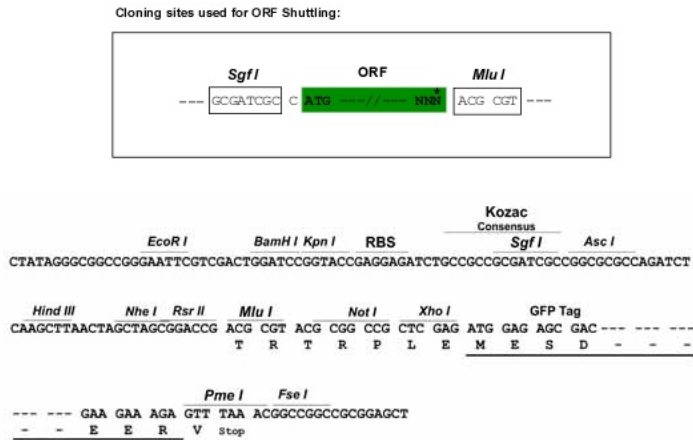
MSAPRAEEQPSRSGERQPLVARGPRGPRRWRRTAAAVALLVQMLERAFFGVTSNLVLYLNSLNFNWDGQ
 QASRATLLFLGASYLLAPVGGWLADVYLRFLTISLSLLLYLAASGLLLTTITNDGRRSFCGEMPELPLE
 PACPSSSCQGSWSSPYCATTLVLLLLALAASSVRSTLTSFGADQVMDLGRDATRRFFNWFYSINLGA
 ILSLLVVFIEQNIISFLWYSIIIVGLVGLAFFIFL FATPVFITKPPTGSQVSSMLKLAQNCPCRRSSS
 RDESAHLLPDQRSNQPSPQEDMANFQVLVKILPVMVTLVPYWMVYFQMSTYVLQGLHLHIPNIFRT
 NPNISLLLLRSDSSNYRIPEAWLLANVAVILILIPVKDHLIDPLLLRCKLLPSSLQKMALGMFFGFTSII
 VAGVLEKERLQYIAANQTPVQLIGKDLYYAAPLSIWWQIPQYLLIGVSEIFASIPGLEFAYSEAPRSMQG
 AIMGIFFCLSGVGSLLGSLVALLSFPGGWMYCPKDFGNINNCQMDRYFFLLAGIEAVTAVLFLWIAGRY
 ERTRQDPASQRSSSRVRG

TRTRPLE - GFP Tag - V

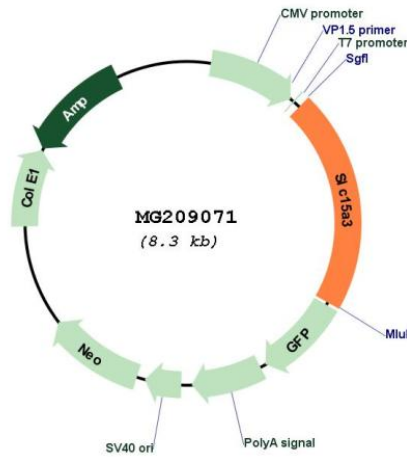
Restriction Sites:

SgfI-MluI

Cloning Scheme:



Plasmid Map:



ACCN: NM_023044
 ORF Size: 2342 bp

OTI Disclaimer:	<p>Due to the inherent nature of this plasmid, standard methods to replicate additional amounts of DNA in E. coli are highly likely to result in mutations and/or rearrangements. Therefore, OriGene does not guarantee the capability to replicate this plasmid DNA. Additional amounts of DNA can be purchased from OriGene with batch-specific, full-sequence verification at a reduced cost. Please contact our customer care team at custsupport@origene.com or by calling 301.340.3188 option 3 for pricing and delivery.</p> <p>The molecular sequence of this clone aligns with the gene accession number as a point of reference only. However, individual transcript sequences of the same gene can differ through naturally occurring variations (e.g. polymorphisms), each with its own valid existence. This clone is substantially in agreement with the reference, but a complete review of all prevailing variants is recommended prior to use. More info</p>
OTI Annotation:	This clone was engineered to express the complete ORF with an expression tag. Expression varies depending on the nature of the gene.
Components:	The ORF clone is ion-exchange column purified and shipped in a 2D barcoded Matrix tube containing 10ug of transfection-ready, dried plasmid DNA (reconstitute with 100 ul of water).
Reconstitution Method:	<ol style="list-style-type: none"> 1. Centrifuge at 5,000xg for 5min. 2. Carefully open the tube and add 100ul of sterile water to dissolve the DNA. 3. Close the tube and incubate for 10 minutes at room temperature. 4. Briefly vortex the tube and then do a quick spin (less than 5000xg) to concentrate the liquid at the bottom. 5. Store the suspended plasmid at -20°C. The DNA is stable for at least one year from date of shipping when stored at -20°C.
RefSeq:	NM_023044.2 , NP_075531.2
RefSeq Size:	2361 bp
RefSeq ORF:	1737 bp
Locus ID:	65221
UniProt ID:	Q8BPX9
Cytogenetics:	19 A
Gene Summary:	Proton oligopeptide cotransporter. Transports free histidine and certain di- and tripeptides (By similarity).[UniProtKB/Swiss-Prot Function]