

Product datasheet for **MG209067**

Pigt (BC034175) Mouse Tagged ORF Clone

Product data:

Product Type:	Expression Plasmids
Product Name:	Pigt (BC034175) Mouse Tagged ORF Clone
Tag:	TurboGFP
Symbol:	Pigt
Synonyms:	CGI-06, NDAP, Ndap7
Mammalian Cell Selection:	Neomycin
Vector:	pCMV6-AC-GFP (PS100010)
E. coli Selection:	Ampicillin (100 ug/mL)



[View online »](#)

ORF Nucleotide Sequence:

>MG209067 representing BC034175
 Red=Cloning site Blue=ORF Green=Tags(s)

TTTTGTAATACGACTCACTATAGGGCGGCCGGAATTCGTCGACTGGATCCGGTACCGAGGAGATCTGCC
 GCC**CGGATCGCC**

ATGCCGCTCGGTTTCCGTTGCGGTTACTGGTGTCTGTGGTGGGACGGGGCTGCTGTGGCTGCGCGG
 AGGGCCACGCGACAGCCTGCGAGAAGAGCTCGTTATCACTCCACTGCCTTCCGGCGACGTGGCCGCCAC
 ATTCCAGTTCCGCACGCGTTGGGATTTCGGATCTGCAGCGGGAAGGAGTGTCCATTACAGGCTCTTCCCT
 AAAGCCCTGGGACAGCTGATCTCCAAGTACTCCCTGCGGGAGCTCCACCTGTCGTTACACGAAGGCTTTT
 GGAGGACGCGATACTGGGGGCCACCTTCTGCAGGCTCCGTGAGGTGCAGAGCTCTGGGTCTGTTCCA
 AGACACTGTCACCGATGTGGATAAGTCTGGAGGGAGCTCAGCAATGTCCTCTCGGGGATCTTCTGTGCA
 TCCCTCAACTTCATCGACGCCACCAATACCGTCACTCCACCGCCTCTTCAAACCTCTGGGACTGGCCA
 ATGACACTGACGACTACTTCTGCGCTACGCTGTGCTGCCTCGGAGGTTGTCTGCACTGAGAACCTCAC
 GCCATGGAAGAAGCTCTTCCCTGCAGTCCAAGGCCGTCTCTCAGTGTATTGAAAGCAGACCGCTTG
 TTCCACACCAGTTACCCTCCAGGCAGTGCACATCCGGCCTATCTGCAGAAATGCTCACTGTACCAGCA
 TCTCTGGGAGCTGAGGCAGACCCTTTCGGTTGTCTTGTATGCCTTCATCACAGGACAGGGGAAGAAAGA
 CTGGTCCCTCTTCCGCATGTTCTCCCGACTCTCACAGAGGCCTGTCCATTGGCGTCTCAGAGCCTAGTT
 TATGTGGACATCACAGGCTACAGCCAGGATAATGAAACTGGAGGTGAGCCCTCCCCAACTTCCACAT
 ACCAGGATGTCATTTGGGCACCAGGAAGACCTATGCCGTCTATGACTTGTGTTGACACAGCCATGATCAA
 TAACTCTCGAAACCTCAACATCCAGCTCAAATGGAAGAGACCCCAAGATAATGAGGCCCTACCCGTGCC
 TTCTCGCATGCGCAGCGGTACGTGAGTGGCTATGGACTGCAGAAGGAGAGCTGAGTACTCTGCTGTACA
 ACTCCCATCCTTATCGGGCCTTCCCGTGTCTGCTGGATGTCGTGCCCTGGTACCTCGGGCTGTATGT
 GCACACGCTCACCATACCTCCAAGGGCAAGGAGAATAAACCAAGTTACATCCACTACCAACCTGCTCAG
 GACAGGACGACGCCCCACCTCCTGGAGATGCTCATTACAGTGCAGCCTCCGTCACCAAGGTCTCCA
 TCCAGTTTGAACGAGCCCTGCTCAAGTGGACAGAGTACACACCAGACCCCAACCAGGCTTCTATGTGAG
 CCCATCTGCTCCTCAGCGCCCTTGTGCCAGTGTGGTGGCAGCAAACCAGTGGACTGGGAAGGGAGCCCT
 CTCTTCAACACCTTGTCCCGTGTCTGATGGCTCCAGTACTTTGTCCGACTCTACACAGACCCCTTGC
 TAGTGAACCTGCCACCCCGACTTACGATGCCCTACAATGTGATCTGCCTACGTGCACGGTGGTGGC
 CGTGTGCTATGGCTCCTTCTACAATCTCCTCACCCGAACCTTTCACATCGAAGAGCCCAAGTCGGCGGC
 CTGGCCAAGCGGCTGGCTAACCTCATCCCGGTGCCCGTGGTGTGCCCTCTC

AG**CGGACCG**ACGCGTACGCGGCCGCTCGAG - GFP Tag - GTTTAA

Protein Sequence:

>MG209067 representing BC034175
 Red=Cloning site Green=Tags(s)

MPLGLPLRLLVLLLVGRGCCGCAEGPRDSLREELVITPLPSGDVAATFQFRTRWDSLQREGVSHYRLF
 KALGQLISKYSLRELHLSFTQGFWRTRYWGPFLQAPSGAELWWFQDVTVDKSWRELSNVLSGIFCA
 SLNFIDATNTVPTASFKPLGLANDDDYFLRYAVLPREVVCTENLTPWKLLPCSSKAGLSVLLKADRL
 FHTSYHSQAVHIRPICRNAHCTSIWELRQTLVVFDAFITGQGGKDWLFRMFSRTEACPLASQSLV
 YVDITGYSQDNETLEVSPPTSTYQDVILGTRKTYAVYDLFDAMINNSRNLNIQLKWKRPDPNEALPVP
 FLHAQRYVSGYGLQKGEI LSTLLYNHPYRAFVLLLDVVPWYLRLLYVHTLTITSKGKPKPSYIHYQPAQ
 DRQQPHLLEMLIQLPANSVTKVSIQFERALLKWTEYTPDPNHGFYVSPSVLSALVPSVVAAPVDWEGSP
 LFNTLFPVSDGSSYFVRLYTEPLLVNLPDFSMYPYVNICTCTVVAVCYGSFYNLLTRTFHIEEPKSGG
 LAKRLANLIRRARGVPP

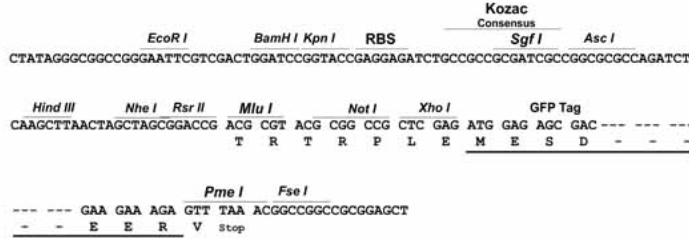
SGP**TRTRRLE** - GFP Tag - V

Restriction Sites:

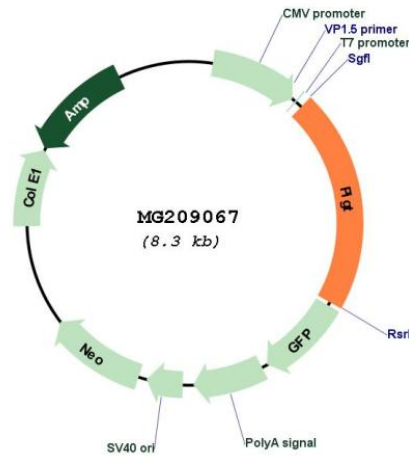
Sgfl-RsrII

Cloning Scheme:

Cloning sites used for ORF Shuttling:



Plasmid Map:



ACCN: BC034175
 ORF Size: 1734 bp

OTI Disclaimer:	The molecular sequence of this clone aligns with the gene accession number as a point of reference only. However, individual transcript sequences of the same gene can differ through naturally occurring variations (e.g. polymorphisms), each with its own valid existence. This clone is substantially in agreement with the reference, but a complete review of all prevailing variants is recommended prior to use. More info
OTI Annotation:	This clone was engineered to express the complete ORF with an expression tag. Expression varies depending on the nature of the gene.
Components:	The ORF clone is ion-exchange column purified and shipped in a 2D barcoded Matrix tube containing 10ug of transfection-ready, dried plasmid DNA (reconstitute with 100 ul of water).
Reconstitution Method:	<ol style="list-style-type: none">1. Centrifuge at 5,000xg for 5min.2. Carefully open the tube and add 100ul of sterile water to dissolve the DNA.3. Close the tube and incubate for 10 minutes at room temperature.4. Briefly vortex the tube and then do a quick spin (less than 5000xg) to concentrate the liquid at the bottom.5. Store the suspended plasmid at -20°C. The DNA is stable for at least one year from date of shipping when stored at -20°C.
RefSeq:	BC034175.1
RefSeq Size:	2322 bp
RefSeq ORF:	1736 bp
Locus ID:	78928
Cytogenetics:	2 H3
Gene Summary:	Component of the GPI transamidase complex. Essential for transfer of GPI to proteins, particularly for formation of carbonyl intermediates (By similarity).[UniProtKB/Swiss-Prot Function]