

Product datasheet for **MG209050**

Edem2 (NM_145537) Mouse Tagged ORF Clone

Product data:

Product Type:	Expression Plasmids
Product Name:	Edem2 (NM_145537) Mouse Tagged ORF Clone
Tag:	TurboGFP
Symbol:	Edem2
Synonyms:	9530090G24Rik; AI327354
Mammalian Cell Selection:	Neomycin
Vector:	pCMV6-AC-GFP (PS100010)
E. coli Selection:	Ampicillin (100 ug/mL)



[View online »](#)

ORF Nucleotide Sequence:

>MG209050 representing NM_145537
 Red=Cloning site Blue=ORF Green=Tags(s)

TTTTGTAATACGACTCACTATAGGGCGGCCGGAATTCGTCGACTGGATCCGGTACCGAGGAGATCTGCC
 GCC**CGCATCGCC**

ATGCCTTTCCGGCTACTCATCCCGCTCGGCCTCGTGTGCGTGCTGCTACCCCTGCACCATGGTGCGCCAG
 GCCCCGACGGCACCGCGCCCGACCCGCCACTACAGGGAGCGAGTCAAGGCCATGTTCTACCACGCCTA
 CGACAGTTACCTGAAAAATGCCTTTCCCTACGATGAGCTGAGACCTCTCACCTGTGATGGCAGCAGCACC
 TGGGGCAGTTTTTCTCTGACGCTAATTGATGCCCTGGACACCTTGTCTGATTTTGGGGAATACCTCTGAAT
 TCCAAAGAGTAGTGGAGGTTCTTCAGGACAATGTGGACTTTGATATCGACGTGAACGCCTCTGTGTTTGA
 AACCAACATCCGAGTGGTAGGAGGACTCCTTTCTGCTCATCTCTTGTCAAAGAAGCCGGTGTGGAGGTG
 GAAGCCGGGTGGCCTTGTCTGGCCTCTCCTCAGGATGGCGGAGGAAGCAGCCCGAAACTCTCCAG
 CATTTTCAGACCCACGGGCATGCCCTATGGAAGTGTGAACCTGCTTCATGGCGTGAACCTGGAGAGAC
 CCCTGTTACCTGTACAGCAGGATTTGGACCTTATTGTGAATTTGCTACCTGAGCAGCCTCACCGGT
 GACCCTGTGTTTGAAGATGTGGCCAGAGTGGCCCTGATGCGTCTCTGGGAGAGCCGGTACAGATATCGGGC
 TGTTGGCAATCACATCGATGTGCTCACTGGCAAGTGGGTGGCCAGGATGCAGGCATCGGGGCTGGTGT
 GGATTCCTATTTTGTGACTGTTAAAAGGAGCCATCCTTCTTCAGGATAAGAACTCATGGCCATGTTT
 CTAGAGTACAACAAGCCATCCGGAATTACACGCACCTTCGATGACTGGTACCTCTGGGTGCAGATGTACA
 AGGGGACCGTGTCAATGCCTGTCTTCCAGTCTTGGAGGCCTACTGGCCTGGCCTTCAGAGCCTTATTGG
 AGACATTGACAAATGCCATGAGGACCTTTCTCAACTACTACTGTATGGAAGCAGTTTGGGGGCTGCCA
 GAATTCTACAACATTCCTCAGGGATACACAGTGGAGAAGCAGAGAAGGCTACCCACTCCGACCGGAGCTCA
 TCGAGAGCGCAATGTACCTCTACCGCCACTGGGGATCCCACTCTTTAGAAGTGGGAGAGAGCTGT
 GGAATCCATTGAGAAAAATCAGCAAGGTGGAGTGTGGATTTGCCACGATCAAGGACCTCCGGGACCACAAG
 CTTGACAACCGCATGGAGTCTTTCTTCTGGCTGAAACTGTGAAATACCTCTATCTTCTGTTCCACCCAA
 ACAACTTCATCCACAACATGGCTCCACCTTTGACTCTGTGATGACTCCCATGGGGAGTGCATCTAGG
 AGCCGGGGGCTACATCTTCAACACGGAGGCTCACCCATTGACCTGCTGCCTTGCCTGCTGCCGGAGG
 CTCAAGGAGGAGCAGTGGGAAGTGGAGGACTTGATAAAGGAGTTCTACTCCCTCAAACAGAGCAGGCCAA
 AGAGAGCTCAGAGGAAGACAGTGGGTGGGGCCCTGGGAGCCCCAGTCAGGGCCAGCCACTCTTCTC
 ACCTGCAAACCAGCCAGGGAGAAGCAGCCTGCCCGCAGCGAACCCCGCTTCTCAGCTGCCCCAGCCAG
 CCCTTACCTCTAAGCTGGCATTGCTAGGCCAGGTTTTCTAGACTCTCA

ACGCGTACGCGGCCGCTCGAG - GFP Tag - GTTTAA

Protein Sequence:

>MG209050 representing NM_145537
 Red=Cloning site Green=Tags(s)

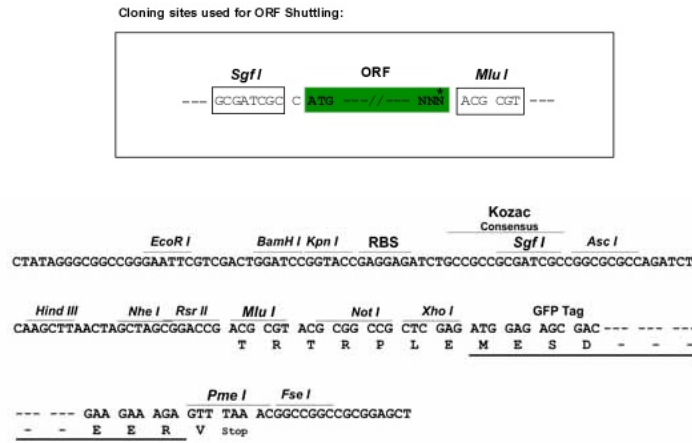
MPFRLLIPLGLVCVLLPLHHGAPGPDGTAPDPAHYRERVKAMFYHAYDSYLENAFPYDELRLPTCDGHDT
 WGSFSLTLIDALDILLGNTSEFQRVVEVLQDNVDFDIDVNASVFETNIRVVGGLLSAHLSSKKAGVEV
 EAGWPCSGPLLRMAEEAARKLLPAFQTPTGMPYGTVNLHGVNPGETPVTCTAGIGTFIVEFATLSSLTG
 DPVFEDEVARVALMRLWESRSDIGLVGNHIDVLTKWVAQDAGIGAGVDSYFEYLKGAAILQDKLMAMF
 LEYNKAIARNYTHFDDWYLVWQMYKGTVSMVPVFSLEAYWPGLQSLIGDIDNAMRTFLNYYTVWKQFGGLP
 EFYNIPQGYTVEKREGYPLRPELIESAMYLYRATGDPTLLELGRDAVESIEKISKVECGFATIKDLRDHK
 LDNRMESFFLAETVKYLYLLFHPNFIHNGSTFDSVMTPHGECILGAGGYIFNTEAHPIDPAALHCCRR
 LKEEQWEVEDLKEFYSLKQSRPKRAQRKTVRSGPWEQSGPATLFSANQPREKQPARQRTPLLSQPSQ
 PFTSKLALLGQVFLDSS

TRTRPLE - GFP Tag - V

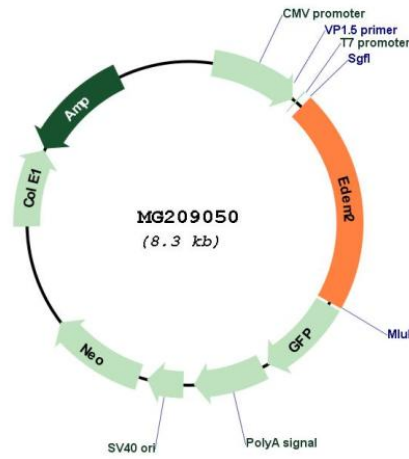
Restriction Sites:

Sgfl-MluI

Cloning Scheme:



Plasmid Map:



ACCN: NM_145537
 ORF Size: 1731 bp

OTI Disclaimer:	The molecular sequence of this clone aligns with the gene accession number as a point of reference only. However, individual transcript sequences of the same gene can differ through naturally occurring variations (e.g. polymorphisms), each with its own valid existence. This clone is substantially in agreement with the reference, but a complete review of all prevailing variants is recommended prior to use. More info
OTI Annotation:	This clone was engineered to express the complete ORF with an expression tag. Expression varies depending on the nature of the gene.
Components:	The ORF clone is ion-exchange column purified and shipped in a 2D barcoded Matrix tube containing 10ug of transfection-ready, dried plasmid DNA (reconstitute with 100 ul of water).
Reconstitution Method:	<ol style="list-style-type: none">1. Centrifuge at 5,000xg for 5min.2. Carefully open the tube and add 100ul of sterile water to dissolve the DNA.3. Close the tube and incubate for 10 minutes at room temperature.4. Briefly vortex the tube and then do a quick spin (less than 5000xg) to concentrate the liquid at the bottom.5. Store the suspended plasmid at -20°C. The DNA is stable for at least one year from date of shipping when stored at -20°C.
RefSeq:	NM_145537.1 , NP_663512.1
RefSeq Size:	1926 bp
RefSeq ORF:	1734 bp
Locus ID:	108687
UniProt ID:	Q8BJT9
Cytogenetics:	2 H1
Gene Summary:	Involved in the endoplasmic reticulum-associated degradation (ERAD) pathway that targets misfolded glycoproteins for degradation in an N-glycan-dependent manner (PubMed:15579471, PubMed:25655076). May initiate ERAD by promoting the first mannose trimming step of ERAD substrates, from Man9GlcNAc2 to Man8GlcNAc2 (By similarity). Seems to recognize and bind to exposed hydrophobic regions in target proteins (PubMed:25655076). [UniProtKB/Swiss-Prot Function]