

Product datasheet for **MG209049**

Thbd (NM_009378) Mouse Tagged ORF Clone

Product data:

Product Type:	Expression Plasmids
Product Name:	Thbd (NM_009378) Mouse Tagged ORF Clone
Tag:	TurboGFP
Symbol:	Thbd
Synonyms:	A1385582; CD141; TM
Mammalian Cell Selection:	Neomycin
Vector:	pCMV6-AC-GFP (PS100010)
E. coli Selection:	Ampicillin (100 ug/mL)



[View online »](#)

ORF Nucleotide Sequence:

>MG209049 representing NM_009378
 Red=Cloning site Blue=ORF Green=Tags(s)

TTTTGTAATACGACTCACTATAGGGCGGCCGGGAATTCGTCGACTGGATCCGGTACCGAGGAGATCTGCC
 GCC**CGGATCGCC**

ATGCTTGGGATTTTCTTTCTGGGTGTGCTGGCTCCAGCTAGCCTGGGGCTCTCCGCACTAGCCAAGCTGC
 AGCCACAGGCAGTCAATGCGTGGAGCATGAGTGCCTTCGCGCTTTTCCAGGGCCCCGCGACCTTCCCTCGA
 TGCCAGCCAGGCCTGCCAGCGCCTGCAAGGACATTTGATGACAGTGCCTCCTCAGTGGCTGCCGATGTC
 ATCTCCCTTCTGCTGAGCCAGAGCAGTATGGATTTAGGGCCCTGGATCGGTTTACAGCTCCCGCAGGGCT
 GTGACGACCCGGTGCATCTCGGGCCCTGCGCGGCTTCCAGTGGTTACTGGCGATAACCACACCAGTTA
 CAGCAGGTGGGCGCGGCCAACGACCAGACGGCTCCACTCTGCGGCCCTGTGCGTCACGGTCTCGACA
 GCAACTGAAGTGCACCCGGGAGCCGGCTGGGAAGAGAAGCCATGCGAGACTGAGACCCAGGGTTTCC
 TCTGTGAGTTTTACTTACAGCTTCTGCAGGCCCTGACGGTGAATACTCGCGATCCTGAGGCTGCCCA
 CATCTCTAGTACCTACAACACCCGTTCCGGGTGAGTGGTGCAGGACTTTCAAACGCTGCCGTTAGGCAGT
 TCCGCCGCGGTGGAGCCCTTGGCTTGGAGCTGGTGTGCAGGGCCCCGCCGGAACCTCAGAGGGCACT
 GGGCTTGGGAAGCGACAGGAGCCTGGAATTGCAGCGTGGAGAATGGTGGCTGTGAGTACTTGTGCAATAG
 GAGCACGAATGAACCCAGATGCCTCTGCCCCAGAGACATGGACCTGCAGGCCGATGGACGTTCTGTGTGA
 AGACCTGTGGTTCAATCGTGAACGAACCTGCGAGCATTTTTGTGTGACCAACGCTGAAGTGCCAGGCT
 CTTACTCTGTATGTGTGAGACAGGCTACCAGTTGGTGCAGACGGACACCGGTGTGAGGACGTGGATGA
 CTGTAAGCAGGGGCCAATCCATGTCCCGAGCTCTGTGTTAACACCAAGGGCGGCTTCAATGCTTCTGCG
 TATGATGGCTATGAGTTGGTGGATGGAGAGTGCCTGGAGCTTCTGGATCCGTGTTCCGATCTAACTGCC
 AGTTTTCACTGCCAGCCAGTGCAGCCACCGACTACCGATGCATCTGCGCTCCGGGCTTGCACCCAAAGC
 GGATGAACCGCACAAAGTGCAGAAATGTTCTGCAATGAAACTTCGTGCCAGCAGACTGTGACCCCTAACTCT
 CCTACTGTTTGTGAATGCCCTGAAGGCTTCATCCTGGACGAGGGTCCGTATGCACGGACATTGATGAGT
 GCAGTCAAGGTGAATGCTTACCAGTGAATGTCGAAACTTCCCTGGCTCCTATGAGTGTATCTGCGGGCC
 TGACACAGCCCTTGTGGTCAAGTATAGCAAAGACTGTGACCCCATCCCTGTTAGGGAAGACACCAAGGAA
 GAGGAGGGCTCTGGGAGCCTCCAGTCAAGCCACGCCAGGCTCTCCGACAGGTCCTCCCTTCTGCAAGGC
 CAGTGCCTCTGGCGTGTCTATTGGCATCTCCATTGCCAGCCTGTCCCTGGTGGTGGCGCTTTTGGCGCT
 TCTCTGTACCTGCGCAAGAAGCAGGGCGCTGCTCGCGCAGAGCTGGAGTACAAGTGCAGCATCTCCGCC
 AAGGAGGTAGTGTGCAGCACGTGAGACTGATCGGACGCTGCAGAAGTTC

ACGCGTACGCGGCCGCTCGAG – GFP Tag – GTTTAA

Protein Sequence:

>MG209049 representing NM_009378
 Red=Cloning site Green=Tags(s)

MLGIFFLGVLPASLGLSALAKLQPTGSQCVEHECFALFQGPATFLDASQACQRLQGHLMTVRSSVAADV
 ISLLLLSQSSMDLGPWIGLQLPQGCDDPVHLGPLRGFQWVTDGNHTSYSRWARPNDQTAPLCGPLCVTVST
 ATEAAPGEPAWEEKPCETETQGFLCEFYFTASCRPLTVNTRDPEAAHISSTYNTPFVSGADFQTLVPGS
 SAAVEPLGLELVCRAPPGTSEGHWAWEATGAWNCSVENGGCEYLNRSTNEPRCLCPRDMDLQADGRSCA
 RPVVQSCNELCEHFCVSNAEVPGSYSCMCETGYQLAADGHRCEDVDDCKQGNPCPQLCVNTKGGFECFC
 YDGYELVDGECVELLDPCFGSNCFQCQPVSPDYRCICAPGFAPKPDEPHKCEMFCNETSCPADCDPNS
 PTVCECEPGFILDGVSCTDIDECSEQECFTSECRNFPGSYECICGPDALAGQISKDCDIPVREDTKE
 EEGSGEPPVSPTPGSPTGPPSARPVHSGVLIGISIASLSLVALLALLCHLRKKQGAARAELEYKCASSA
 KEVVLQHVRTDRTLQKF

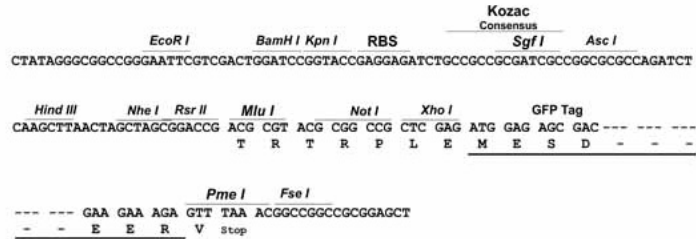
TRTRPLE – GFP Tag – V

Restriction Sites:

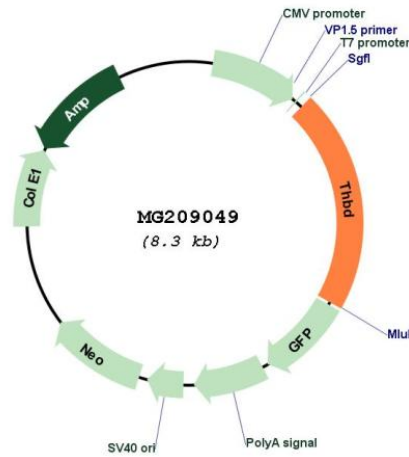
Sgfl-MluI

Cloning Scheme:

Cloning sites used for ORF Shutting:



Plasmid Map:



ACCN: NM_009378
 ORF Size: 1731 bp

OTI Disclaimer:	The molecular sequence of this clone aligns with the gene accession number as a point of reference only. However, individual transcript sequences of the same gene can differ through naturally occurring variations (e.g. polymorphisms), each with its own valid existence. This clone is substantially in agreement with the reference, but a complete review of all prevailing variants is recommended prior to use. More info
OTI Annotation:	This clone was engineered to express the complete ORF with an expression tag. Expression varies depending on the nature of the gene.
Components:	The ORF clone is ion-exchange column purified and shipped in a 2D barcoded Matrix tube containing 10ug of transfection-ready, dried plasmid DNA (reconstitute with 100 ul of water).
Reconstitution Method:	<ol style="list-style-type: none">1. Centrifuge at 5,000xg for 5min.2. Carefully open the tube and add 100ul of sterile water to dissolve the DNA.3. Close the tube and incubate for 10 minutes at room temperature.4. Briefly vortex the tube and then do a quick spin (less than 5000xg) to concentrate the liquid at the bottom.5. Store the suspended plasmid at -20°C. The DNA is stable for at least one year from date of shipping when stored at -20°C.
RefSeq:	NM_009378.1 , NP_033404.1
RefSeq Size:	3636 bp
RefSeq ORF:	1734 bp
Locus ID:	21824
UniProt ID:	P15306
Cytogenetics:	2 73.45 cM
Gene Summary:	Thrombomodulin is a specific endothelial cell receptor that forms a 1:1 stoichiometric complex with thrombin. This complex is responsible for the conversion of protein C to the activated protein C (protein Ca). Once evolved, protein Ca scissions the activated cofactors of the coagulation mechanism, factor Va and factor VIIIa, and thereby reduces the amount of thrombin generated.[UniProtKB/Swiss-Prot Function]