

Product datasheet for **MG209045**

Nr1d2 (NM_011584) Mouse Tagged ORF Clone

Product data:

Product Type:	Expression Plasmids
Product Name:	Nr1d2 (NM_011584) Mouse Tagged ORF Clone
Tag:	TurboGFP
Symbol:	Nr1d2
Synonyms:	Rev-erb; RVR
Mammalian Cell Selection:	Neomycin
Vector:	pCMV6-AC-GFP (PS100010)
E. coli Selection:	Ampicillin (100 ug/mL)



[View online »](#)

ORF Nucleotide Sequence:

>MG209045 representing NM_011584
 Red=Cloning site Blue=ORF Green=Tags(s)

TTTTGTAATACGACTCACTATAGGGCGGCCGGAATTCGTCGACTGGATCCGGTACCGAGGAGATCTGCC
 GCC**CGCATCGCC**

ATGGAGCTGAACGCAGGAGGTGTGATTGCCTACATCAGTTCCTCTAGCTCTGCCTCCAGCCCTGCCTCTT
 GTCACAGTGAGGGTTCTGAGAATAGCTTCCAGTCTCGTCTCGTCTGTTCCATCTTCTCCAAATAGCTC
 TAACTGTGATGCCAACGGCAATCCCAAGAACGCTGATATCTCTAGCATCGATGGTGTCTGAAGAGTGAC
 CGCACAGATTGTCTGTGAAAACAGGCAAAACCAGTGCTCTGGCATGACTAAGAGTCACAGTGGAATGA
 CAAAATTTAGTGGCATGGTTCTACTGTGTAAGTCTGTGGGGATGTGGCATCAGGATCCACTATGGAGT
 TCATGCTTGTGAAGGCTGAAGGGTTTCTTTCCGAGGAGCATTACGAAAAACATCCAGTATAAGAAGTGC
 CTGAAGAATGAGAACTGTCCATCATGAGGATGAACAGGAACCGTGCCAGCAGTGCCGCTTTAAGAAGT
 GTCTGTCTGTGGGATGTCACGAGATGCTGTTTCGATTTGGCCGAATTCCTAAGCGTGAAAAACAGAGAAT
 GCTAATTGAAATGCAAAGTGCAATGAAGACCATGATGAACACCCAGTTCAGTGGCCACCTGCAGAATGAC
 ACCTTAGCAGAACAGCATGATCAGTCAGCACTACCAGCTCAGGAACAGCTGCGGCCCAAGTCCCAGCTGG
 AGCAAGAAAAACATCAAAAACACTCCTTCTGATTTTGCAAAGGAGGAAGTATTGGTATGGTGACCAGAGC
 CCACAAGGATACCTTTCTGTATAATCAGGAACATCGAGAAAACCTCATCTGAGAGCATGCCACCTCAGAGA
 GGAGAACGGATTCCCAGGAACATGGAGCAATATAATTTAAATCAAGACCATCGTGGCAGTGGGATTACAC
 ACCACTTCCCCTGTAGTGAGAGGCGCAACATCTCAGTGGACAGTACAAAGGGAGGAACATAATGCATTA
 CCCAAACGGCCATGCCGTTTGTATTGCAAATGGACACTGTATGAACCTTCTCCAGTGCTTATACTCAAAGA
 GTCTGTGATAGAATCCAGTAGGTGGATGTTCTCAGACTGAGAACAGAAATAGTTACCTGTGCAACTG
 GAGGGAGGATGCATCTGGTGTCTATGAGCAAGTCTCCATATGTGGACCCTCAGAAGTCCAGCATGA
 AATCTGGGAAGAATTTTCAATGAGTTTTACCCACAGCAGTAAAAGAGGTGGTGAATTTGCAAAGAGGATT
 CCTGGCTTCCGAGATCTGTCTCAGCATGATCAGGTCAATCTGTTAAAAGCTGGGACTTTTGGGTTTTAA
 TGGTACGATTTGCTTATTATTTGATGCAAAGAACGGACTGTCACCTTTCTAAGTGGTAAGAAGTACAG
 TGTGGATGACCTGCACTCAATGGGAGCAGGGATCTGCTCAGCTCTATGTTTGGTTCAGTGAGAAGCTG
 AATGCCCTCCAGCTCAGTATGAGGAAATGAGCTTGTTCACAGCAGTGTCTGGTATCTGCAGATCGAT
 CTGGAATTGAAAATGTCAACTCAGTGGAGGCTTTCAGGAAACACTCATCCGTGCACTAAGGACCTTAAT
 AATGAAAAACCATCCAAATGAGGCCTCCATTTTACAAAATTACTTCTAAAGTTGCCAGATCTTCGATCT
 TTAACAACATGCACTCTGAGGAACTCTTGGCCTTTAAAGTTCATCCT

ACGCGTACGCGGCCGCTCGAG - GFP Tag - GTTTAA

Protein Sequence:

>MG209045 representing NM_011584
 Red=Cloning site Green=Tags(s)

MELNAGGVIAYISSSSASPASCHSEGENSFQSSSSVSPSSPNSNCDANGNPKNADISSIDGVLKSD
 RTDCPVKTGKTSAPGMTKSHSGMTKFSGMVLLCKVCGDVASGFHYGVHACEGCKGFFRRSIQNIQYKCC
 LKNENCSIMRMRNRRCQCRFKKCLSVGMSRDAVRFGRIPKREKQRMLIEMQSAMKTMNTQFSGHLQND
 TLAEQHDQSALPAQEQLRPKSQLEQENIKNTPSDFAKEEVIQMVTRAHKDTFLYNQEHRENSSESMPQR
 GERIPRMEQYNLNQDHRGSGIHNHFPCSERQQHL SGQYKGRNIMHYPNGHAVCIANGHCMNFSAYTQR
 VCDRIPVGGCSQTENRNSYLCNTGGRMHLVCPMSKSPYVDPQKSGHEIWEFFSMSFTPAVKEVVEFAKRI
 PGFRDL SQHDQVNLKAGTFEVL MVRFASLFDKERTVTFLSGKKYSVDDLHSMGAGDLLSSMFEFSEKL
 NALQLSDEEMSLFTAVVLVSADRSIENVNSVEALQETLIRALRTLIMKNHPNEASIFTKLLLKLPDLRS
 LNNMHSEELLAFKVHP

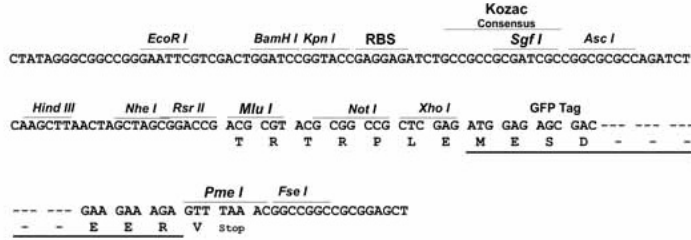
TRTRPLE - GFP Tag - V

Restriction Sites:

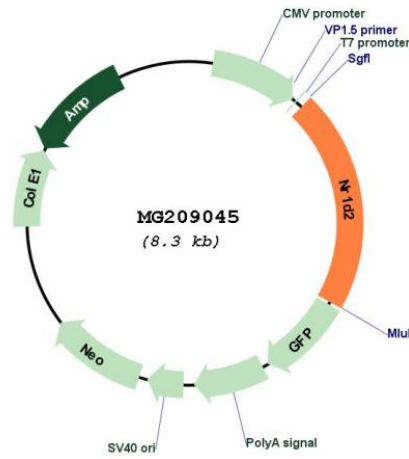
Sgfl-MluI

Cloning Scheme:

Cloning sites used for ORF Shutting:



Plasmid Map:



ACCN: NM_011584
 ORF Size: 1728 bp

OTI Disclaimer:	<p>Due to the inherent nature of this plasmid, standard methods to replicate additional amounts of DNA in E. coli are highly likely to result in mutations and/or rearrangements. Therefore, OriGene does not guarantee the capability to replicate this plasmid DNA. Additional amounts of DNA can be purchased from OriGene with batch-specific, full-sequence verification at a reduced cost. Please contact our customer care team at custsupport@origene.com or by calling 301.340.3188 option 3 for pricing and delivery.</p> <p>The molecular sequence of this clone aligns with the gene accession number as a point of reference only. However, individual transcript sequences of the same gene can differ through naturally occurring variations (e.g. polymorphisms), each with its own valid existence. This clone is substantially in agreement with the reference, but a complete review of all prevailing variants is recommended prior to use. More info</p>
OTI Annotation:	<p>This clone was engineered to express the complete ORF with an expression tag. Expression varies depending on the nature of the gene.</p>
Components:	<p>The ORF clone is ion-exchange column purified and shipped in a 2D barcoded Matrix tube containing 10ug of transfection-ready, dried plasmid DNA (reconstitute with 100 ul of water).</p>
Reconstitution Method:	<ol style="list-style-type: none">1. Centrifuge at 5,000xg for 5min.2. Carefully open the tube and add 100ul of sterile water to dissolve the DNA.3. Close the tube and incubate for 10 minutes at room temperature.4. Briefly vortex the tube and then do a quick spin (less than 5000xg) to concentrate the liquid at the bottom.5. Store the suspended plasmid at -20°C. The DNA is stable for at least one year from date of shipping when stored at -20°C.
RefSeq:	NM_011584.4
RefSeq Size:	4465 bp
RefSeq ORF:	1731 bp
Locus ID:	353187
UniProt ID:	Q60674
Cytogenetics:	14 A2
Gene Summary:	<p>This gene encodes a member of the nuclear hormone receptor family, specifically the NR1 subfamily of receptors. The encoded protein functions as a transcriptional repressor and may play a role in circadian rhythms and carbohydrate and lipid metabolism. [provided by RefSeq, Feb 2014]</p>