

Product datasheet for **MG209041**

Ttc39a (NM_153392) Mouse Tagged ORF Clone

Product data:

Product Type:	Expression Plasmids
Product Name:	Ttc39a (NM_153392) Mouse Tagged ORF Clone
Tag:	TurboGFP
Symbol:	Ttc39a
Synonyms:	4922503N01Rik
Mammalian Cell Selection:	Neomycin
Vector:	pCMV6-AC-GFP (PS100010)
E. coli Selection:	Ampicillin (100 ug/mL)



[View online »](#)

ORF Nucleotide Sequence:

>MG209041 representing NM_153392
 Red=Cloning site Blue=ORF Green=Tags(s)

TTTTGTAATACGACTCACTATAGGGCGGCCGGGAATTCGTCGACTGGATCCGGTACCGAGGAGATCTGCC
 GCC**CGGATCGCC**

ATGACCACGGCCAGCGGCCCGGGCGACCTGCCGGCGGGTCTCCTGTGAGCAGCCTCCATGAGGCCCTGG
 ACCAGTGCATGACAGCCCTGGACCTCTTCTTACCAACCAGTTCTCAGAAGCACTCAGCTACCTCAAACC
 CAGAACCAAGGAGAGCATGTATCACTCCCTGACGTATGCCACCATCCTGGAGATGACAGGCCATGATGACC
 TTCGACCCCAAGGACATCCTGCTTGTGCAACATGATGAAAGAAGCGCAGTCGCTGTGTGAGGCATC
 GAAGGAAGTCTTCTATGACGGACTATTGACCAACCTGGTGCACCGTCTACCATTGACCAGTTCACAGA
 AGAGGAAATCCACGCAGAGGTCTGTTATGCAGAATGCCTACTACAGAGAGCGGCCCTGACCTTCTGCAG
 GACGAGAACATGGTGAGCTTCATCAAGGGCGGCATCAAAGTCCGGAACAGCTACCAGACTTACAAGGAAC
 TGGATAGCCTCGTCCAGTCTCGCAATACTCTAAGGGAGAGGCCACAGACTTTGAAGGAGGGGTGAA
 GCTTGGCGTAGGAGCCTCAACCTGACGCTGTCCATGCTTCCACCAGGATTCTGAGGCTGCTGGAGTTT
 GTTGGGTTTTTCAGGAAACAAGGACTATGGGCTGCTGCAGCTGGAGGAGGGCGCGACCCGGACACAGCTTCC
 GTGCACTGCTGTGCGTCACTGCTGTTGCTGTGTTATCACACCTTCCACCTTCGTCGCTCGGTAAGGAA
 TGTCAACATCGAGGAGGCAGAGAAGCTGCTGAAGCCCTACCTGAACCGATACCCCAAGGGCGCCATCTTC
 CTGTTCTTTGCTGGGCGGATTGAAGCTATCAAAGGAAATATTGATGCTGCTGTCCGGCGGTTTGAGGAGT
 GCTGCGAGGCCAGCAGCACTGGAAGCAGTTTACCACATGTGCTACTGGGAGCTGATGTGGTGTCTTAC
 CTACAAGGGCCAGTGGAAATGGCCTACTTCTACGCCGACCTGCTGAGCAAGGAGAACTCCTGGTCCAAG
 GCCACCTACATCTACATGAAGGCTGCCTACCTCAGCATGTTTGGGAAGGAAGACTACAAGCCATTCGGGG
 ACAATGAAGTGGAGTTATTCAGGGCCGTGCCAGGCTTGAAGCTCAAGATTGCTGGGAAATCTACCCCA
 AGAGAAGTTTGCTATCCGGAAGTCCAGGCGCTACCTCTCCCCAACCCCATCTCCTTGCCGATCCCTGCT
 CTGGAAATGATGTACATCTGGAATGGCTATGCTGTGATTGGGAAGCAGCCGACACTCACGGATGGGATGC
 TGGAGGTCATACCAAGGCTGAAGAGATGCTGGCAATGGGCCAGAGAATGAGTACTCAGCAGATGACGA
 CTGCTTGGTTAAATTGCTGAAAGCCTGTGCTGAAATACCTGGGCCGAATCCAGGAGGCAGAGGAGAAT
 TTCAGGAGCATTCTGCCAATGAAAAGAAGATTAATATGACCATTACTTGATTCCAAATGCCCTACTGG
 AACTGGCCCTGCTATTTATGGAGCAAGGCAGAAATGAGGAGGCCATCAAACCTTAGAGTCTGCAAAGCA
 AAATAACAAGAACTACTCCATGGAGTCAAGGACACATCTTGAATCCAGGCAGCCACACTCCAGGCCAGA
 TCTTCCCTAGAAGATGGCAACAGATCTCTAGTCTCGTCAGTGTCTTG

ACGCGTACGCGGCCGCTCGAG – GFP Tag – GTTTAA

Protein Sequence:

>MG209041 representing NM_153392
 Red=Cloning site Green=Tags(s)

MTTASGPGDLPAGSPVSSLHEALDQCMTALDLFLTNQFSEALSYLKPRTKESMYHSLTYATILEMQAMMT
 FDPQDILLAGNMMKEAQSLCQRHRRKSSMTDSFNLVHRPTIDQFTEEEIHAEVCYAECLLQRAALTFLLQ
 DENMVSFIKGGIKVRNSYQTYKELDSLQSSQYSKGESHHRFEGGVKLGVGAFNLTL SMLPTRILRLLF
 VGFSGNKDYGLLQLEEGATGHSFRAVLVCMMLLCYHTFLTFVLGTGNVNIIEAEKLLKPYLNRYPKGAIF
 LFFAGRIEAIKGNIDAARRFECCQAQHWKQFHMCYWELMWCFTYKQWKMAFYADLLSKENSWK
 ATYIYMKAAYLSMFGKEDYKPFGDNEVELFRAVPLKLLK IAGKSLPTEKFAIRKSRRYLSPNPISLP
 IPA LEMMYIWNKYAVIGKQPTLTDGMLVITKAEMLAMPENEYSADDDCLVKLLKGLCLKYLGR IQEAEEN
 FRSISANEKKIKYDHYLIPNALLELALLFMEQGRNEEAIKLLES AKQNYKNYSMESRTHLRIQAATLQAR
 SSLEDGNRSLVSSVSL

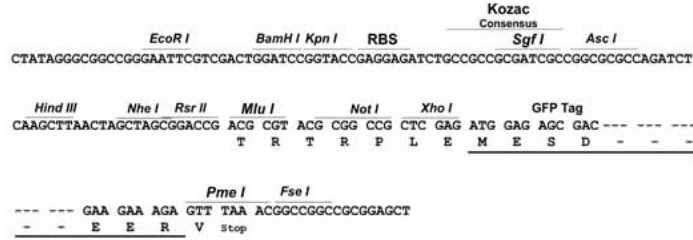
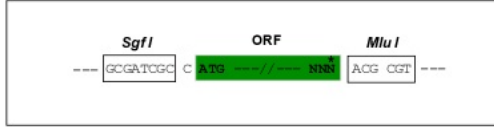
TRTRPLE – GFP Tag – V

Restriction Sites:

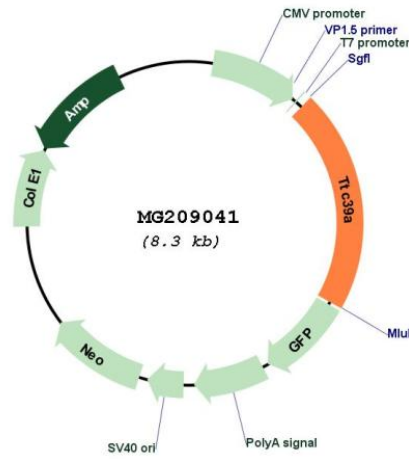
Sgfl-MluI

Cloning Scheme:

Cloning sites used for ORF Shutting:



Plasmid Map:



ACCN: NM_153392
 ORF Size: 1728 bp

OTI Disclaimer:	The molecular sequence of this clone aligns with the gene accession number as a point of reference only. However, individual transcript sequences of the same gene can differ through naturally occurring variations (e.g. polymorphisms), each with its own valid existence. This clone is substantially in agreement with the reference, but a complete review of all prevailing variants is recommended prior to use. More info
OTI Annotation:	This clone was engineered to express the complete ORF with an expression tag. Expression varies depending on the nature of the gene.
Components:	The ORF clone is ion-exchange column purified and shipped in a 2D barcoded Matrix tube containing 10ug of transfection-ready, dried plasmid DNA (reconstitute with 100 ul of water).
Reconstitution Method:	<ol style="list-style-type: none">1. Centrifuge at 5,000xg for 5min.2. Carefully open the tube and add 100ul of sterile water to dissolve the DNA.3. Close the tube and incubate for 10 minutes at room temperature.4. Briefly vortex the tube and then do a quick spin (less than 5000xg) to concentrate the liquid at the bottom.5. Store the suspended plasmid at -20°C. The DNA is stable for at least one year from date of shipping when stored at -20°C.
RefSeq:	NM_153392.1 , NP_700441.1
RefSeq Size:	2362 bp
RefSeq ORF:	1731 bp
Locus ID:	230603
UniProt ID:	A2ACP1
Cytogenetics:	4 C7