

Product datasheet for **MG209036**

Scfd1 (BC027793) Mouse Tagged ORF Clone

Product data:

Product Type:	Expression Plasmids
Product Name:	Scfd1 (BC027793) Mouse Tagged ORF Clone
Tag:	TurboGFP
Symbol:	Scfd1
Synonyms:	RA410, STXBP1L2
Mammalian Cell Selection:	Neomycin
Vector:	pCMV6-AC-GFP (PS100010)
E. coli Selection:	Ampicillin (100 ug/mL)



[View online »](#)

ORF Nucleotide Sequence:

>MG209036 representing BC027793
 Red=Cloning site Blue=ORF Green=Tags(s)

TTTTGTAATACGACTCACTATAGGGCGGCCGGAATTCGTCGACTGGATCCGGTACCGAGGAGATCTGCC
 GCC**GCGATCGCC**

ATGTTGAATTTCAATGTGCCTCATGTTAAAAACAGTACTGGAGAACCAGTATGGAAGTACTCATTATG
 ACAGATTTGGCCAAGATATCATCTCCTCTGCTGTGTGAAGGAACTGAGAGACATGGGCATCACTCT
 GCATCTCCTTTTGCAGTACAGACCAGATCCGATCCAGATGTTCCCTGCAGTGTACTTTGTGATGCCAAC
 GAAGAAAAATTGACAGACTGTGCCAGGATCTTCGAAATCAGCTCTATGAATCCTATTATTTAAATTTTA
 TTTCTGCGATTTCAAGAAGTAACTGGAAGACATTGCGAATGCAGCATTGGCCGCTAGTGCAGTCACACA
 AGTTGCCAAGGTTTTGACCACTATCTCAATTTTATTACTTTGGAAGATGACATGTTTGTATTATGTAAT
 CAAAATAAGGAAGTTGTTTCATATCGTGCCATTAACAGGCCAGACATCACAGACACAGAGATGGAACTG
 TTATGGACACTATTGTGGACAGCCTCTTCTGCTTTTTTTGTACATTAGGTGCTGTTCCCATCATCCGATG
 CTC AAGAGGAACGGCGGAGAAAATGGTGGCAGTAAAAGTATAAAAAACTTCGGGAAAACTAAGAGAT
 GCAAGAAACAGCCTTTTACCGGTGATCCACTTGGAACTGGCCAGTTCAGCTTCCAAAGGCTTTATTAG
 TCCTTGTTGACAGAAACATTGACCTGGCAACGCCTTTACACCATACGTGGACATACCAAGCGCTGGTACA
 CGATGTGCTGGATTTCCACTTAAACAGAGTAAATTTGGAAGAATCTACAGGAGTGGAAAACCTCCAGCT
 GGTGCTAGACCAAAGAGGAAAAACAAGAAGTCTTACGACTTAACTCCAGTTGATAAATCTGGCAGAAGC
 AATAAGGAAGTCCATTCCAGAAGTCGACAGATCAGTCCAACAAGAACTAGAATCTTACAGAGCACACA
 AGATGAGGTCAAACGACTGAAGAGCATTATGGGACTAGAAGGAGAGGATGAAGGGCCATCAGCATGCTT
 TCTGATAACACTGCTAAGCTCACATCAGCTGTCAGTTCTTTGCCAGAACTCCTTGAAAAAAAAGACTTA
 TTGATCTGCACACAAAATGTTGCCACTGCTGTTTTAGAACACATAAAGGCAAGAAAACCTGGATGATATTT
 TGAATATGAAGAAAAAATAATGAGCAAGACTACTCTGGATAAGTCCCTCCTAGACGTATATCCGACCCT
 GATGCAGGGACTCCGGAAGACAAAATGAGGCTGTTTTCTTATCTATTACATAAGCGCACAGCAAGCACCGT
 CCGAGGTTGATTTGGAGCAGTATAAAAAGGCTTTAACAGATGCAGGCTGCAACCTTAGCCCTTTACAGTA
 TATCAAGCAGTGGAAAGGCTTTTCCCAAGATGGCCTCAACTCCTGCCAGCTACGGAAACACTACCACTAAA
 CCAATGGGTCTCCTGTCCCGAGTCATGAATACAGGATCACAGTTTGTGATGGAAGGTGTGAAGAACCTGG
 TATTGAAGCAGCAGAATCTACCTGTTACTCGGATTTTAGACAATCTCATGGAGATGAAGTCAAACCTGA
 AACTGATGATTATAGATATTTGATCCCAAATGCTGCGGAGTAAAGACAGCTCCTTCTCTACAAAAC
 GAAGAACCCCTGCTTCCAGGAAGGTGGACCTGGAATACCTTCT

ACGCGTACGCGGCCGCTCGAG - GFP Tag - GTTTAA

Protein Sequence:

>MG209036 representing BC027793
 Red=Cloning site Green=Tags(s)

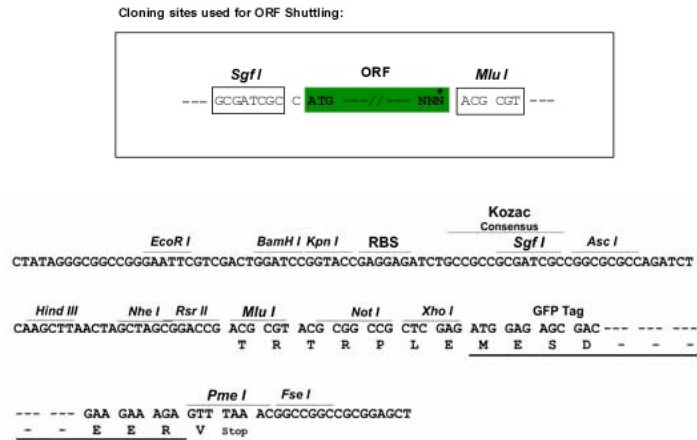
MLNFNVPHVKNSTGEPVWVLIYDRFGQDIISPLLSVKELRDMGITLHLLHSDRPIPDPVAVYFVMP
 EENIDRLCQDLRNQLYESYYLNFISAISSRSKLEDIANAALAASAVTQVAKVFDQYLNFTLEDDMFVLCN
 QNKELVSYRAINRPDITDTEMETVMDTIVDSLFCFFVTLGAVPIIRCSRGTAAEMVAVKLDKRLRENLRD
 ARNSLFTGDPLGTGQFSFQRPLLVLVDRNIDLATPLHHTWYQALVHDLVDFHLNRVNLEESTGVENSPA
 GARPKRKNKKSVDLTPVDKFWQKHGSPFPEVAESVQQELESYRAQEDEVKRLKSIMGLEGEDEGAISML
 SDNTAKLTSVAVSSPELLEKKRLIDLHTNVATAVLEHIKARKLDVYFYEYEEKIMSKTTLDKSLLDVSDP
 DAGTPEDKMRLFLIYYISAQQAPSEVDLEQYKKALTDAGCNLSPLQYIKQWKAFKMASTPASYGNNTTK
 PMGLLSRVMNTGSQFVMEGVKNLVLKQQLPVTRILDNLMEMKSNPETDDYRYFDPKMLRSNDSSFLYKT
 EPPASQEGGPGIPS

TRTRPLE - GFP Tag - V

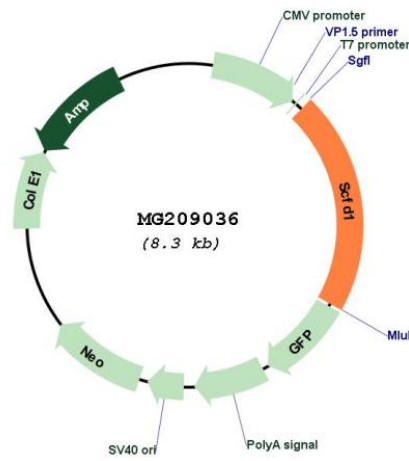
Restriction Sites:

SgfI-MluI

Cloning Scheme:



Plasmid Map:



ACCN: BC027793
 ORF Size: 1725 bp

OTI Disclaimer:	The molecular sequence of this clone aligns with the gene accession number as a point of reference only. However, individual transcript sequences of the same gene can differ through naturally occurring variations (e.g. polymorphisms), each with its own valid existence. This clone is substantially in agreement with the reference, but a complete review of all prevailing variants is recommended prior to use. More info
OTI Annotation:	This clone was engineered to express the complete ORF with an expression tag. Expression varies depending on the nature of the gene.
Components:	The ORF clone is ion-exchange column purified and shipped in a 2D barcoded Matrix tube containing 10ug of transfection-ready, dried plasmid DNA (reconstitute with 100 ul of water).
Reconstitution Method:	<ol style="list-style-type: none"> 1. Centrifuge at 5,000xg for 5min. 2. Carefully open the tube and add 100ul of sterile water to dissolve the DNA. 3. Close the tube and incubate for 10 minutes at room temperature. 4. Briefly vortex the tube and then do a quick spin (less than 5000xg) to concentrate the liquid at the bottom. 5. Store the suspended plasmid at -20°C. The DNA is stable for at least one year from date of shipping when stored at -20°C.
RefSeq:	BC027793.1
RefSeq Size:	3135 bp
RefSeq ORF:	1727 bp
Locus ID:	76983
Cytogenetics:	12 B3
Gene Summary:	Plays a role in SNARE-pin assembly and Golgi-to-ER retrograde transport via its interaction with COG4. Involved in vesicular transport between the endoplasmic reticulum and the Golgi (By similarity).[UniProtKB/Swiss-Prot Function]