

Product datasheet for **MG209035**

Epn1 (BC099682) Mouse Tagged ORF Clone

Product data:

Product Type:	Expression Plasmids
Product Name:	Epn1 (BC099682) Mouse Tagged ORF Clone
Tag:	TurboGFP
Symbol:	Epn1
Synonyms:	AA269831; lbp1
Mammalian Cell Selection:	Neomycin
Vector:	pCMV6-AC-GFP (PS100010)
E. coli Selection:	Ampicillin (100 ug/mL)



[View online »](#)

ORF Nucleotide Sequence:

>MG209035 representing BC099682
 Red=Cloning site Blue=ORF Green=Tags(s)

TTTTGTAATACGACTCACTATAGGGCGGCCGGAATTCGTCGACTGGATCCGGTACCGAGGAGATCTGCC
 GCC**CGGATCGCC**

ATGTCGACCTCATCGCTGCGGCGTCAGATGAAGAATATCGTCCAACTACTCAGAGGCTGAGATCAAGG
 TCCGCGAGGCCACAAGCAATGATCCCTGGGGCCATCCAGCTCCCTCATGTGAGAGATTGCTGACCTCAC
 CTAACAATGTTGTGGCCTTCTCCGAGATCATGAGCATGATCTGGAAGCGGCTCAATGACCACGGCAAGAAC
 TGGAGGCACGTCTACAAGGCCATGACGTTGATGGAGTACCTCATCAAGACTGGCTCTGAGCGTGTATCAC
 AACAGTGC AAAGAGAACATGTATGCTGTGCAGACGCTGAAGGACTTCCAGTATGTGGACCGTGATGGCAA
 GGACCAGGGTGTGAATGTGCGGGAGAAGGCCAAGCAGCTGGTGGCTTTGCTGCGTGATGAGGATCGGCTC
 CGGGAGGAGCGGCCACGCGCTCAAGACCAAGGAGAAGCTGGCAGACTGCCACGGCCTCCTCAGCAG
 CCGTGGGCTCTGGACCACCTCCGAGGCGGAGCAGGCATGGCCACAGAGCAGCGGGAGGAGGATTGCA
 GCTCCAGCTGGCCCTGGCTATGAGCAAGGAGGAGCCGACAGCCCCGCTCCTGCGGCCCTGAGGATGAC
 GTCAGCTCCAGCTGGCCCTTAGTTTGGCCGAGAGGAGCAGATAAGGAAGAGCGGATCCGTCGTGGGG
 ATGACCTGAGGCTGCAGATGGCAATAGAGGAGAGCAAGAGGGAGACTGGGGGCAAGGAGGAGTATCTCT
 CATGGATCTTGCTGATGTCTTACAACCCAGCGCCTCCACAGGCCTCAGACCCTTGGGGGGGCCGGCA
 TCTGTGCTACTGCTGTCCCTGTGGCTGCTGCCGCTTACAGACCCTTGGGGGGGACCTGCTGTCCCTCCAG
 CTGCTGATCCTTGGGGTGGTGCAGCCCCACACCAGCCTCAGGGGATCCCTGGAGGCCTGCAGCCCTAC
 AGGGCCCTCTGTTGATCCTTGGGGTGGGACCCAGCTCCTGCAGCTGGAGAGGGGCCACCCCTGACCCG
 TGGGAGACTCTGATGGTGGGCTCCTGTGAGTGGGCCCATCTTGTACCCCTGGGACCTGCCCCG
 CTTTCTCAGACCCTGGGAGGCTCACCTGCAAGGCCAGCAGCAACGGCACTGCAGTTGGGGCTTGA
 CACAGAGCCTGATGAGTTCTCAGACTTCGACCGACTCCGCACTGCCCTGCCAACCTCTGGGAGCAGCAG
 GGGGAGTTGGAGTTGCTCGCAGGAGAGGTGCTGCTCGCAGCCCTGGGGATTTCGACATGAGTGGGGTTG
 GGGGATCTCTGGCTGAGTCTGTGGGAGTCCCCACCTGCTGCAACCCCAACTCCACCCCCCAACACG
 GAAGACTCCGGAGTATTCTTAGGCCCTAATGCAGCCCTTGTGGATCTGGACTCGCTGGTGGAGCCGACCA
 GGCCCCACACCAGGATCCAAGGCTTCAACCCATTCTTCCAAGCGGAGCTCCGCCACAGGCCCT
 CTGTACCAATCCTTCCAGCCAGCACCCTGCAACGCTCACCTGAACCAGCTCCGTCTCAGTCTGT
 GCCCCAGTTCCTGGAGCGCCACCACCTATATCTCCTCTTGGTGGAGGCCCTGGCTGCCCCCATG
 ATGCCCCAGTCCCCAGCCCCAACACTAACCCCTTCTCCTA

ACGCGTACGCGGCCGCTCGAG - GFP Tag - GTTTAA

Protein Sequence:

>MG209035 representing BC099682
 Red=Cloning site Green=Tags(s)

MSTSSLRQMKNIHVNYSEAEIKVREATSNDPWPSSSLMSEIADLTYNVVFSEIMSMIWKRLNDHGKN
 WRHVYKAMTLMELYIKTGSERVSQQCKENMYAVQTLKDFQYVDRDGKDQGVNVREKAKQLVALLRDEDRL
 REERAHALKTKEKLAQTATASSAAVSGPPPEAEQAWPQSSGEEELQLQLALAMSKEEADQPPSCGPEDD
 VQLQLALSLSREEHDKEERIRRGDDLRLQMAIEESKRETTGGKEESSLMDLADVFTTPAPPQASDPWGGPA
 SVPTAVPVAAAASDPWGGPAVPPAADPWGGAAPTASGDPWRPAAPTGPSVDPWGGTPAPAAGEGPTDP
 WGSSDGGAPVSGPPSSDPWAPAPAFSDPWGGSPAKPSSNGTAVGGFDTEPDEFSDFDRLRLALPTSGSST
 GELELLAGEVPARSPGAFDMSGVGGSLAESVGSPPPAATPTPTPPTKTPESFLGPNAALVDLDSLVSRL
 GPTPPGSKASNPFLPSGAPPTGPSVTNPFQPAPPATLTLNQLRLSPVPPVPGAPPTYISPLGGGGLPPM
 MPPGPPAPNTNPFLL

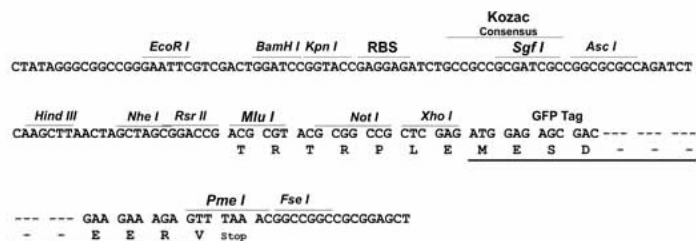
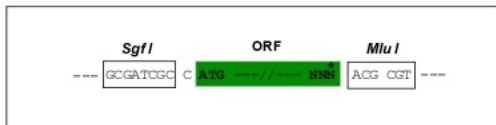
TRTRPLE - GFP Tag - V

Restriction Sites:

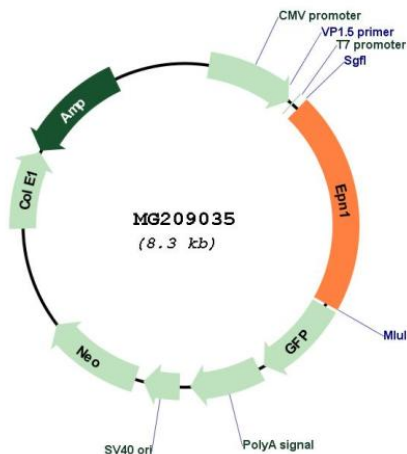
Sgfl-MluI

Cloning Scheme:

Cloning sites used for ORF Shutting:



Plasmid Map:



ACCN: BC099682
 ORF Size: 1727 bp

OTI Disclaimer:	The molecular sequence of this clone aligns with the gene accession number as a point of reference only. However, individual transcript sequences of the same gene can differ through naturally occurring variations (e.g. polymorphisms), each with its own valid existence. This clone is substantially in agreement with the reference, but a complete review of all prevailing variants is recommended prior to use. More info
OTI Annotation:	This clone was engineered to express the complete ORF with an expression tag. Expression varies depending on the nature of the gene.
Components:	The ORF clone is ion-exchange column purified and shipped in a 2D barcoded Matrix tube containing 10ug of transfection-ready, dried plasmid DNA (reconstitute with 100 ul of water).
Reconstitution Method:	<ol style="list-style-type: none">1. Centrifuge at 5,000xg for 5min.2. Carefully open the tube and add 100ul of sterile water to dissolve the DNA.3. Close the tube and incubate for 10 minutes at room temperature.4. Briefly vortex the tube and then do a quick spin (less than 5000xg) to concentrate the liquid at the bottom.5. Store the suspended plasmid at -20°C. The DNA is stable for at least one year from date of shipping when stored at -20°C.
RefSeq:	BC099682 , AAH99682
RefSeq Size:	2589 bp
RefSeq ORF:	1727 bp
Locus ID:	13854
Cytogenetics:	7 A1
Gene Summary:	Binds to membranes enriched in phosphatidylinositol 4,5-bisphosphate (PtdIns(4,5)P2). Modifies membrane curvature and facilitates the formation of clathrin-coated invaginations (By similarity). Regulates receptor-mediated endocytosis.[UniProtKB/Swiss-Prot Function]