

Product datasheet for **MG209034**

Fut8 (NM_016893) Mouse Tagged ORF Clone

Product data:

Product Type:	Expression Plasmids
Product Name:	Fut8 (NM_016893) Mouse Tagged ORF Clone
Tag:	TurboGFP
Symbol:	Fut8
Mammalian Cell Selection:	Neomycin
Vector:	pCMV6-AC-GFP (PS100010)
E. coli Selection:	Ampicillin (100 ug/mL)



[View online »](#)

ORF Nucleotide
Sequence:

>MG209034 representing NM_016893, codon optimized.
Due to the complexity of NM_016893, the ORF clone is codon optimized for mammalian Expression.
The nucleotide sequence differs from the reference sequence, yet the amino acid sequence remains identical.

Red=Cloning site Blue=ORF Green=Tags(s)

TTTTGTAATACGACTCACTATAGGGCGCCGGAATTCGTCGACTGGATCCGGTACCGAGGAGATCTGCC
GCCGCGATCGCC

ATCGGGCATGGACTGGTTCCTGGCGTTGGATTATGCTCATTCTTTTGCCTGGGGACCTTGTTATTTT
ATATAGGTGGTCAATTTGGTTCGAGATAATGACCACCCTGATCACTCCAGCAGAGAACTCTCCAAGATTCT
TGCAAAGCTTGAACGCTTAAAACAGCAAAATGAAGACTTGAGGCGAATGGCTGAGTCTCTCCGAATACCA
GAAGGCCCATTTGACCAGGGGACAGCTACAGGAAGAGTCCGTGTTTTAGAAGAACAGCTTGTTAAGGCCA
AAGAACAGATTGAAAATTACAAGAAACAAGCTAGAAAATGGTCTGGGGAAGGATCATGAAATCTTAAGGAAG
GAGGATTGAAAATGGAGCTAAAGAGCTCTGGTTTTTTCTACAAAGCGAACTGAAGAAATTAAGCATTTA
GAAGGAAATGAACTCAAAGACATGCAGATGAAATTTCTTTGGATTTAGGACACCATGAAAGGTCTATCA
TGACAGATCTATACTACCTCAGTCAAACAGATGGAGCAGGGGATTGGCGTGAAAAAGAGGCCAAAGATCT
GACAGAGCTGGTCCAGCGGAGAATAACATATCTCCAGAATCCTAAGGACTGCAGCAAAGCCAGGAAGCTG
GTGTGTAACATCAATAAAGGCTGTGGCTATGGTTGTCACTCCATCACGTGGTCTACTGTTTCATGATTG
CTTATGGCACCAGCGAACACTCATCTTGAATCTCAGAATTGGCGCTATGCTACTGGTGGATGGGAGAC
TGTATTCAGGCCGTGTGAGTGAGACATGTACCACAGATCTGGACTGAGCACAGGGCATTGGTCCGGAGAG
GTTAACGACAAGAACATTCAGGTTGTTGAGCTCCCTATTGTGGATTCCCTTCATCCTAGACCGCCATATC
TCCCACTGGCCGTGCCTGAGGACCTCGCTGACCGCCTGCTGCGGGTTCATGGGGACCCGGCCGTCTGGTG
GGTGTCTCAGTTTGTGAAGTATCTTATCAGACCGCAGCCCTGGCTGAAAAGGAGATAGAGGAGGCCACT
AAAAAGCTGGGATTCAAACATCCCGTATTGGAGTACATGTGCGAAGAAGTATAAAGTGGGCACTGAAG
CGGCATTTTCATCCAATCGAAGAATACATGGTACACGTGGAGGAGCATTTCAGCTTCTGGCGGAAGGAT
GCAGGTTGACAAGAAGCGAGTTTACCTGGCCACTGATGACCCAACGCTGCTGAAAGAGGCTAAGACTAAG
TACTCCAATTATGAGTTTATCAGTGACAATTCATATCTTGGAGCGCCGGCTGCACAACCGCTATACAG
AGAATAGCCTGCGCGGTGCATCTTGGATATCCATTTCTTTCTCAGGCCGACTTCTCGTCTGTACTTT
CTTTACAGGTATGCAGAGTAGCTACGAAATCATGCAGACACTCCACCCAGATGCCTCCGCAATTTT
CATAGCCTTGATGATATCTACTACTTTGGTGGGAGAATGCCATAACCAGATCGCAGTTTACCCTCATA
AGCCCCGACTGAGGAAGAGATCCCATGGAACCAGGGGACATTATCGGGGTGGCCGTAACCATTTGGGA
TGGCTATAGCAAGGGGATTAATCGGAAGCTGGTAAGACCGGTCTTTACCTTCTACAAGGTTCCGGAA
AAGATCGAAACAGTGAATACCCAACATACCCAGAGGCGGAGAAA

ACGCGTACGCGGCCGCTCGAG - GFP Tag - GTTTAA

Protein Sequence: >MG209034 representing NM_016893
 Red=Cloning site Green=Tags(s)

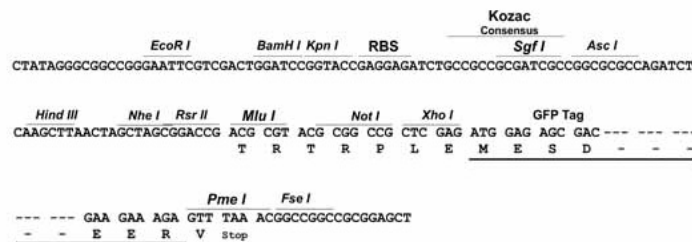
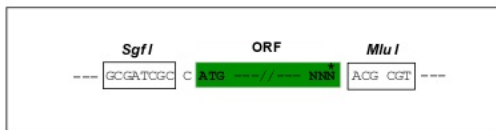
MRAWTGSWRWIMLILFAWGTLIFYIGGHLVRDNDHPDHSSRELKILAKLERLKQQNEDLRMAESLRIP
 EGPIDQGTATGRVRLVEEQLVKAKEQIENYKKQARNLQKDKHEILRRRIENGAKELWFFLQSELKHLKHL
 EGNELQRHADEILLDLGHHERSIMTDLYYLSQTDGAGDWREKEAKDLTELVQRRITYLQNPKDCSKARKL
 VCNINKGCGYGCCQLHHVVYCFMIAVGTQRTLILESQNWRVYATGGWETVFRPVSETCTDRSGLSTGHWSGE
 VNDKNIQVVELPIVDSLHPRPPYPLAVPEDLADRLLRVHGDPVWVVSQFVKYLIRPQPWLEKEIEEAT
 KKLGFKHPVIGVHVRRTDKVGTEAAFHPIEEYMHVVEEHFQLARRMQVDKRVYLATDDPTLLKEAKTK
 YSNYEFISDNSISWSAGLHNRYTENSRLRGVILDIFLSQADFLVCTFSSQVCRVAYEIMQTLHPDASANF
 HSLDDIYFYGQNAHNQIAVYPHKPRTEEEIPMEPGDIIIGVAGNHWGYSKGINRKLKGTGLYPSYKVRV
 KIETVKYPTYPEAEK

TRTRPLE - GFP Tag - V

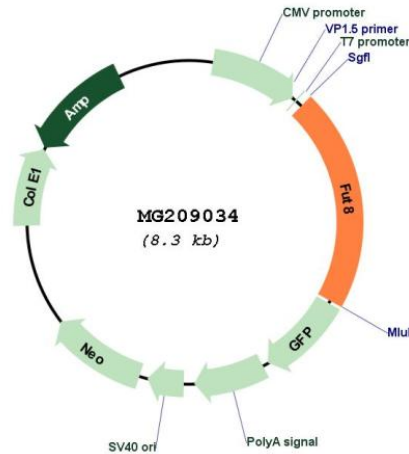
Restriction Sites: SgfI-MluI

Cloning Scheme:

Cloning sites used for ORF Shutting:



Plasmid Map:



ACCN: NM_016893

ORF Size: 1725 bp

OTI Disclaimer: The molecular sequence of this clone aligns with the gene accession number as a point of reference only. However, individual transcript sequences of the same gene can differ through naturally occurring variations (e.g. polymorphisms), each with its own valid existence. This clone is substantially in agreement with the reference, but a complete review of all prevailing variants is recommended prior to use. [More info](#)

OTI Annotation: This clone was engineered to express the complete ORF with an expression tag. Expression varies depending on the nature of the gene.

Components: The ORF clone is ion-exchange column purified and shipped in a 2D barcoded Matrix tube containing 10ug of transfection-ready, dried plasmid DNA (reconstitute with 100 ul of water).

Reconstitution Method:

1. Centrifuge at 5,000xg for 5min.
2. Carefully open the tube and add 100ul of sterile water to dissolve the DNA.
3. Close the tube and incubate for 10 minutes at room temperature.
4. Briefly vortex the tube and then do a quick spin (less than 5000xg) to concentrate the liquid at the bottom.
5. Store the suspended plasmid at -20°C. The DNA is stable for at least one year from date of shipping when stored at -20°C.

RefSeq:	<u>NM_016893.5, NP_058589.2</u>
RefSeq Size:	2923 bp
RefSeq ORF:	1728 bp
Locus ID:	53618
UniProt ID:	<u>Q9WTS2</u>
Cytogenetics:	12 C3
Gene Summary:	Catalyzes the addition of fucose in alpha 1-6 linkage to the first GlcNAc residue, next to the peptide chains in N-glycans.[UniProtKB/Swiss-Prot Function]