

Product datasheet for **MG209012**

Crmp1 (NM_007765) Mouse Tagged ORF Clone

Product data:

Product Type:	Expression Plasmids
Product Name:	Crmp1 (NM_007765) Mouse Tagged ORF Clone
Tag:	TurboGFP
Symbol:	Crmp1
Synonyms:	CRMP-1; Dpysl1; DRP; DRP-1; Ul; ULIP-3; Ulip3
Mammalian Cell Selection:	Neomycin
Vector:	pCMV6-AC-GFP (PS100010)
E. coli Selection:	Ampicillin (100 ug/mL)



[View online »](#)

ORF Nucleotide Sequence:

>MG209012 representing NM_007765
 Red=Cloning site Blue=ORF Green=Tags(s)

TTTTGTAATACGACTCACTATAGGGCGGCCGGAATTCGTCGACTGGATCCGGTACCGAGGAGATCTGCC
 GCC**CGCATCGCC**

ATGTCTCATCAGGGGAAGAAGAGCATCCCAGCATCACCACTGACCGGCTCCTCATCAGAGGTGGACGCA
 TCATCAATGATGACCAGTCTTCTACGCCGATGTCTACCTAGAAGATGGACTCATAAAACAAATAGGAGA
 GAACCTGATTGTTCTGTGGAGTGAAGACCATCGAGGCGAATGGCCGAATGGTCATTCCCGGTGGCATT
 GATGTCAACACTTACCTGCAGAAGCCCTCCAGGGCATGACCTCGGCTGATGACTTCTCCAGGGCACTA
 AAGCAGCGCTGGCAGGTGAACCACGATGATCATTGACCAGTGTCTGAACTGGGTCCAGCTTGT
 GACTTCTTTGAGAAATGGCAGCAAGCAGCAGACACCAAATCCTGCTGTGACTATTCCCTCCACGTGGAC
 ATCACAAGCTGGTATGATGGTGTTCGGGAAGAGCTGGAGGTGCTGGTGCAGGACAAAGGTGTCAACTCT
 TCCAAGTCTACATGGCGTATAAGGACCTGTACCAGATGTCTGACAGCCAGCTGTATGAAGCCTTCACCTT
 CCTTAAGGGTTTGGGAGCTGTGATCTTAGTCCATGCAGAAAATGGAGATTTGATAGCTCAGGAACAAAA
 CGGATCTGGAGATGGGCATCACGGGTCCCGAGGGTCATGCTCTGAGCAGACCCGAGGAGCTGGAGGCCG
 AGGCTGTGTTCCGGGCTATTGCCATTGCAGGCCGGATCAATTGCCCTGTGTACATCACCAGGTCATGAG
 CAAGAGTGCAGCGGACATCATCGCACTGGCCAGGAAGAAAGGCCCTTGTCTTCGGTGAGCCCATAGCC
 GCCAGCCTGGGAACCGATGGCACCCACTACTGGAGCAAGAAGTGGCCAAAGGCAGCTGCATTTGTGACTT
 CCCCTCCCCTGAGCCCAGACCCACCCTCTGACTACTTGACCTCCTTGTGCTGGCCTGTGGAGACTTGCA
 GGTCACAGGTAGTGGCCACTGTCCCTACAGTACTGCTCAGAAGGCTGTGGCAAGGACAACCTTCACTCTG
 ATCCCTGAGGGTGTCAATGGTATAGAAGAGCGGATGACCGTTGTCTGGGACAAGGCAGTGGCTACTGGCA
 AGATGGATGAGAACCAGTTTGTAGCGTCCAGCAGCAACGCAGCCAAGATCTTCAACCTGTACCCGAG
 GAAAGGTCGGATCGCTGTGGGCTCCGATGCTGAGTGTGATCTGGGACCCAGATAAGATGAAGACCATA
 ACAGCCAAAAGCCATAAATCAACTGTGGAGTACAACATCTTTGAGGGCATGGAGTGCCACGGCTCCCCC
 TGGTGGTCATCAGTCAGGGCAAGATTGTCTTTGAGGATGGAAACATCAGTGTGAGCAAGGGCATGGGCCG
 CTTTCATCCCTCGGAAGCCATTCCAGAGCATCTCTACCAGCGTGTGAGGATCAGAAGCAAGGTTTTCGGG
 TTGCATAGTGTTCAGGGGCATGTACGATGGGCTGTGTACGAGGTGCCAGCTACACCCAAACATGCTG
 CTCCTGCTCCTTCTGCCAAATCCTCGCCTTCTAAACACCAACCCCAACCCATCCGGAACCTCCACCAGTC
 CAACTTCAGTTATCAGGTGCCAGATAGATGACAACAATCCAAGGCGTACAGGCCACCGCATTGTGGCG
 CCCCTGGTGGCCGCTCCAACATCACAGCCTCGGT

ACGCGTACGCGGCCGCTCGAG – GFP Tag – GTTTAA

Protein Sequence:

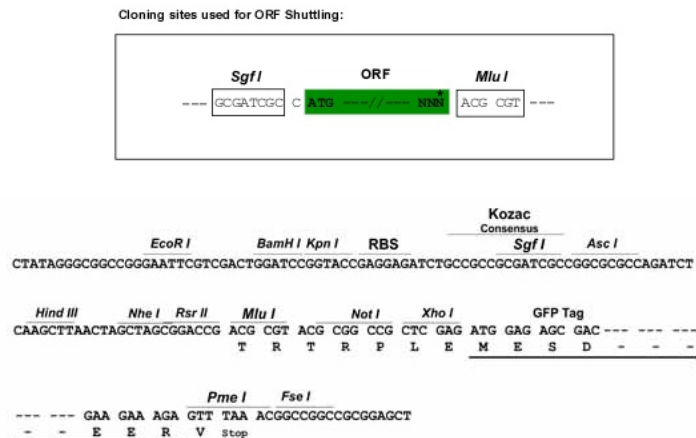
>MG209012 representing NM_007765
 Red=Cloning site Green=Tags(s)

MSHQGKKSIPHITSDRLLIRGGRIINDDQSFYADVYLEDLIKQIGENLIVPGGVKTIEANGRMVIPGGI
 DVNTYLQKPSQGMTSADFFQGTKAALAGGTTMIIDHVVPEPGSSLLTSFEKWHEAADTKSCCDYSLHVD
 ITSWYDGVREELEVLVQDKGVNSFQVYVYKDLQMSDSQLYEAFTFLKGLGAVILVHAENGLIAQEYK
 RILEMGITGPEGHALSRPEELEAEAVFRAIAIAGRINCPVYITKVMKSAADIIALARKGPLVFGPIA
 ASLGTGTHYWSKNWAKAAAFVTSPLSPDPTTDPDYLTSLLACGDLQVTGSGHCPYSTAQKAVGKDNFTL
 IPEGVNGIEERMTVVWDKAVATGKMDENQFVAVTSTNAAKIFNL YPRKGRIVAGSDADVIVDPDKMKTI
 TAKSHKSTVEYNI FEGMECHGSPLVVISQKIVFEDGNI SVSKGMGRFIPRKPFPPEHLYQVRIRSKVFG
 LHSVSRGMYDGPVYVATPKHAAPAPSAKSSPSKHQPPPPIRNLHQSNFSLSGAQIDDNNPRRTGHRIVA
 PGGRSNITSLG

TRTRPLE – GFP Tag – V

Restriction Sites:

Sgfl-MluI

Cloning Scheme:


ACCN: NM_007765

ORF Size: 1716 bp

OTI Disclaimer: The molecular sequence of this clone aligns with the gene accession number as a point of reference only. However, individual transcript sequences of the same gene can differ through naturally occurring variations (e.g. polymorphisms), each with its own valid existence. This clone is substantially in agreement with the reference, but a complete review of all prevailing variants is recommended prior to use. [More info](#)

OTI Annotation: This clone was engineered to express the complete ORF with an expression tag. Expression varies depending on the nature of the gene.

Components: The ORF clone is ion-exchange column purified and shipped in a 2D barcoded Matrix tube containing 10ug of transfection-ready, dried plasmid DNA (reconstitute with 100 ul of water).

Reconstitution Method:

1. Centrifuge at 5,000xg for 5min.
2. Carefully open the tube and add 100ul of sterile water to dissolve the DNA.
3. Close the tube and incubate for 10 minutes at room temperature.
4. Briefly vortex the tube and then do a quick spin (less than 5000xg) to concentrate the liquid at the bottom.
5. Store the suspended plasmid at -20°C. The DNA is stable for at least one year from date of shipping when stored at -20°C.

RefSeq: [NM_007765.4](#), [NP_031791.3](#)

RefSeq Size: 2968 bp

RefSeq ORF: 1719 bp

Locus ID: 12933

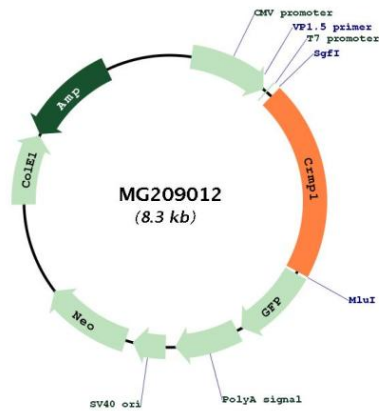
UniProt ID: [P97427](#)

Cytogenetics: 5 19.96 cM

Gene Summary:

This gene encodes a protein that is part of the collapsin response mediator protein family. The family is comprised of five, homologous cytosolic phosphoproteins that are expressed in developing and adult nervous tissue and mediate signaling to transduce responses to extracellular cues. This protein is a Semaphorin 3A signaling molecule that regulates collapse of the growth cone. The growth cone mediates axonal pathfinding in neurons. This protein is reported to represent a new class of microtubule-associated proteins. In humans this protein is reported to inhibit cancer cell invasion. In mouse deficiency of this gene may be associated with impaired spatial memory performance. Alternative splicing results in multiple transcript variants that encode different protein isoforms. [provided by RefSeq, Jan 2013]

Product images:



Circular map for MG209012