

Product datasheet for **MG209001**

Klhl26 (NM_172052) Mouse Tagged ORF Clone

Product data:

Product Type:	Expression Plasmids
Product Name:	Klhl26 (NM_172052) Mouse Tagged ORF Clone
Tag:	TurboGFP
Symbol:	Klhl26
Synonyms:	Klkl26, MGC38024, C630013N10Rik
Mammalian Cell Selection:	Neomycin
Vector:	pCMV6-AC-GFP (PS100010)
E. coli Selection:	Ampicillin (100 ug/mL)



[View online »](#)

ORF Nucleotide Sequence:

>MG209001 representing NM_172052
 Red=Cloning site Blue=ORF Green=Tags(s)

TTTTGTAATACGACTCACTATAGGGCGGCCGGAATTCGTCGACTGGATCCGGTACCGAGGAGATCTGCC
 GCC**CGCATCGCC**

ATGGCGGAGTCCGGTGGCAGCAGCGGCTCTAGTCAGAGCCCCAGCGCCCCGAGCAGCTTGGCCGACAGGA
 ATGGGGCACTTAAGTGCACCTTCTCTGCAGCTGGCCACAGCACTGGCCTCCTGCAGGGCCTGGCTGCCCT
 CCGTGCACAGGGCCAGCTGCTCGATGTGGTCTCACTGTCAACAGTGAAGCCTTTCATGCGCACAAGGTG
 GTCTTGGCGGCCTGCAGTACTACTTTAGTGTGAGGTGACACTGGACCTAGACTGTGTGCAGGACGTGC
 TGGGTGCTGCCGTGTTTCTGCAGATGCTGCCGGTGGTGGAGCTGTGCGAGGACTTCTGAAAGCTGCCAT
 GAGCGTAGAGACGTGCCTGCACATTGGCCAGATGGCTACCACCTTCAGCCTGACATCACTGCGTGAGTCA
 GTAGATGCCTTACATTCGCCACTTCTGCAGATAGCAGCAGAAGAGGACTTCTGCGCCTGCCACTCG
 AGCGCCTTGTCTTCTTCTGCAGAGCAACCGGCTGCAGAGCTGCGCCGAGATTGACCTGTCCGCGCTGC
 TGTGCGCTGGCTGCAGCATGATCTGCCCGCCGCCCCGTGCCAGCCTTGTGCTACGCCAGTGCCTTC
 CCGCTCATGCAACCTGCTGAACCTGGTGGACAGCGTGCAGACACTCGACGTCATGCTCGACGATGCCCTGT
 GTCGCCAGTACCTGCTGGAGGCCTTCAGTACCACGTGCTGCCCTGCCGCCAGCATGACATGCACTGCGCC
 TCGCACTGCTGTGCGCTCTGATGTAGCGTCCCTGGTGGCCTTCGGGGGCACACCTTATACCGACAGCGAC
 CGAGCCGTGAGCAGCAAGGTGTTCCAGTTACCTGAGCCAGGAGCAGCCACTTCCGCGAGCTCACGGAGA
 TGGAACTGGGCTGTAGCCACGCGGGCGTGGCTGTGCTGGATAACTTCGTGTACGTGGCAGGCGGCCAGCA
 TCTGCAGCACCGCAGTGGCGAAGGCGTGTGGACGCTGCTACCGCTATGATCCACAGCGCAATCGCTGG
 CTGCGGCTGCGAGCACTGCGTGCAGCCGTGTGCAGTTCAGCTCACTGCACTGGGAGGGCTGTTGTATG
 CCACCGTGGCCGAAATCGCGCGGCAGCCTGGCGTCTGTGGAGCGCTACTGTCCACGCCGTGACAGCTG
 GGATTTTGCCTGCCCCTCAAGCGCCGTACCTGGGGCCATGCGGGTGCAGCAGCTGCTGGTCCGCTCTAC
 ATCTCAGGTGTTATGGCGTCTCAGCGGAGGACAAGAAGCGCTGCAGTCTATGATCCAGCAGCCGACC
 GCTGGGAGCCAGGGCGCCCATGCGTGAGCCCCGCGTGTGCACGCAATGTTGGGCGCTGCTGGCCGAT
 CTATGCCCTAGGTGGCCGATGGACCAGTGGACCCTGCTTCGATGTGCTGGCTGTGGAGTACTACGTG
 CCGGATGCCGACCAGTGGACCAGTGTGACACCCATGCGAGCTGGTGCAGTCGGAAGCTGGCTGCTGTCTAC
 TAGAGAGGAAGATCTACATCGTGGTGGCTACAACCTGGAGGCTGAACAATGTCACAGGCATCGTTCAGGT
 GTACAACACTGAGACGGATGAGTGGGAGAGACCTGCACTTCCCGAGTCTTTGCAGGCATTGCCTGT
 GCTGCTGCTGCTGCCCGCTCAGGCCATGGGAGG

ACGCGTACGCGGCCGCTCGAG - GFP Tag - GTTTAA

Protein Sequence:

>MG209001 representing NM_172052
 Red=Cloning site Green=Tags(s)

MAESGSSGSSQSPERPSSLADRNGALKCTFSAAGHSTGLLQGLAALRAQGQLLDVVLTVNSEAFHAKV
 VLAACSDYFSAEVTLDLDCVQDVLGAAVFLQMLPVVELCEDFLKAAMSVETCLHIGQMATTFFSLTSLRES
 VDAFTFRHFLQIAAEEDFLRLPLERLVFFLQSNRLQSACAEIDLFRAAVRWLQHDPARRARASLVLRHVRF
 PLMQPAELVDSVQTLDVMLDDALCRQYLLEAFSYHVLPCRQHMSPRTAVRSDVASLVAFGGTPYTDSD
 RAVSSKVFQLPEPGARHFRELTEMELGCSHAGVAVLDFVYVAGGQHLQHRSGEGAVDACYRYDPQRNRW
 LRLRALRESRVQFLTALGGLLYATGGRNRAGSLASVERYCPRRDSWDFACPLKRRTWGHAGAAAAGRLY
 ISGGYGVSAEDKKALQCYDPAADRWEPRAPMREPRVLHAMLGAAGRIYALGGRMDHVDRCFDVLAVEYYV
 PDADQWTSVTPMRAGQSEAGCCLLERKIYIVGGYNWRLNNVTGIVQVYNTETDEWERDLHFPEFAGIAC
 AAVLLPRSGHGR

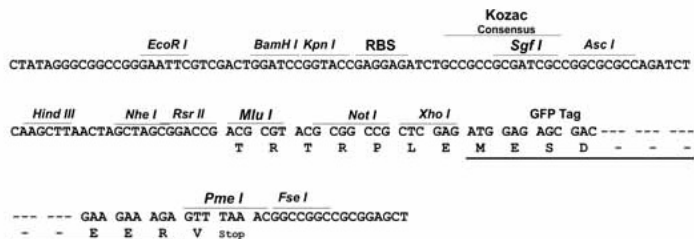
TRTRPLE - GFP Tag - V

Restriction Sites:

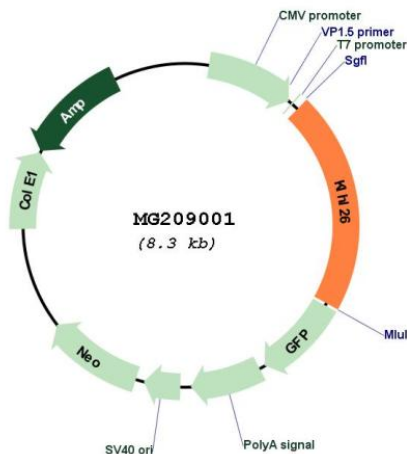
Sgfl-MluI

Cloning Scheme:

Cloning sites used for ORF Shuttling:



Plasmid Map:



ACCN: NM_172052
 ORF Size: 1716 bp

OTI Disclaimer:	The molecular sequence of this clone aligns with the gene accession number as a point of reference only. However, individual transcript sequences of the same gene can differ through naturally occurring variations (e.g. polymorphisms), each with its own valid existence. This clone is substantially in agreement with the reference, but a complete review of all prevailing variants is recommended prior to use. More info
OTI Annotation:	This clone was engineered to express the complete ORF with an expression tag. Expression varies depending on the nature of the gene.
Components:	The ORF clone is ion-exchange column purified and shipped in a 2D barcoded Matrix tube containing 10ug of transfection-ready, dried plasmid DNA (reconstitute with 100 ul of water).
Reconstitution Method:	<ol style="list-style-type: none">1. Centrifuge at 5,000xg for 5min.2. Carefully open the tube and add 100ul of sterile water to dissolve the DNA.3. Close the tube and incubate for 10 minutes at room temperature.4. Briefly vortex the tube and then do a quick spin (less than 5000xg) to concentrate the liquid at the bottom.5. Store the suspended plasmid at -20°C. The DNA is stable for at least one year from date of shipping when stored at -20°C.
RefSeq:	NM_172052.1 , NP_742049.1
RefSeq Size:	3004 bp
RefSeq ORF:	1718 bp
Locus ID:	234378
Cytogenetics:	8 B3.3