

## Product datasheet for **MG208960**

### **Rgs3 (BC033449) Mouse Tagged ORF Clone**

#### **Product data:**

Product Type:	Expression Plasmids
Product Name:	Rgs3 (BC033449) Mouse Tagged ORF Clone
Tag:	TurboGFP
Symbol:	Rgs3
Synonyms:	C2pa, PDZ-RGS3, RGS3S, C2PA-RGS3
Mammalian Cell Selection:	Neomycin
Vector:	pCMV6-AC-GFP (PS100010)
E. coli Selection:	Ampicillin (100 ug/mL)



[View online »](#)

**ORF Nucleotide Sequence:**

>MG208960 representing BC033449  
 Red=Cloning site Blue=ORF Green=Tags(s)

TTTTGTAATACGACTCACTATAGGGCGGCCGGGAATTCGTCGACTGGATCCGGTACCGAGGAGATCTGCC  
 GCC**CGGATCGCC**

ATGTTTGAGACAGAGGCAGATGAGAAGGAGATGCCCTGGTCGAGGGGAAGGGGCCAGTGCTGAGGAAC  
 CCGCACCCAGCAAAAATCCCTCTCTGGCCAGGAGCTTCTCCAGGACAAGACCTCCCTCCAGCAAGA  
 CCCCTCTCCAGCCAGGAGCTTCTGCAGGACAAGATCTCCCTCCAGCAAAAGACCCCTCTCCAGCCAG  
 GAGCTTCTGCAGGACAAGATCTCCCTCCAGCAAAAGACCCCTCTCCAGCCAGGAGCTTCTGTAGGAC  
 AAGACCTCCACCCAGGAAGGACTCCTCAGGCCAAGAAGTGTCTCTGGCCAGAATCACCATCCAGTGA  
 AGACATAGCAACCTGCCCTAAGCCCTCAAAGCCAGAACTCAACAAGCAAGGACTCCACCCAGGC  
 CAGGGATCTCCCGACCACAGAACTCCATCTTGCCAGGGCCTTCTGCTGGTCAAGAATCTACTAGCC  
 AGGACCTCTGCTCAGTCAAGAGCCCTGTTATCCAGAACTCTGCTCCGTCAGAAACGCCTACC  
 CTCTCAGGAGTACCCTCCAGCCTGGGCTCCCTGCCAGAGAAGGACCTTGTCTGAGCAGACCATCAGCTCC  
 GGGGAGCCACCAGTCCGACTGGTGTACTGCCAGCCTTAGACCTAACTTTGTGATCCCGAGGTGC  
 GTCTGGATAATGCCTACAGCCAAGTGGATGGGGCCACGGAGGCAGCTCTGGCGAGGACGAGGATGCAGA  
 AGAGGGAGAGGGGGGAGAAGGGGAGGAAGTGAAGGAGGACGACACCAGCGACGACAACCTACGGGGAT  
 CGTAGTGAGGCCAAGCGCAGCAGCCTGATTGAGACTGGCCAAGGCGCCGAGGGCGGCTTCTCGTTGCGTG  
 TGCAGAACTCGTGCAGCGCCGGACGCACAGCGAGGGCAGCCTGCTGCAGGAGTCCCGGGGGCCCTGCTT  
 TGCTCTGACACCACCTTACACTGCTCTGATGGCGAGGGCCACATCCACCTGGGCTATCCCTTACCC  
 CGCACCTCAAAAAGAAGTGGGTCGTAATGGAGGCTCCATGCACCACCTTCCCTGTTCTTACGGGAC  
 ACAGAAAGATGAGTGGGACTGACCTCACAGAATGTGATGAAGTTCCCGGAAGAGAAAGCAAAAACAT  
 AGCCAAGGACATGAAGAATAAGCTGGCCATCTTCAGGCGCGGAACGAATCTCCCGGGCTCAGCCAGCC  
 AGCAAGACAGACAAGACAACCAAGTCTTCAAGCCTACCTCGGAGGAAGCCCTCAAGTGGAGCGAGTCCC  
 TGGAAAAGTTGCTGCTTCATAAATATGGCTTAGAAGTGTCCAGGCCTTCCCTCGCACCGAGTTCAGTGA  
 GGAGAACCTGGAGTTTTGGCTCGCTTGCAGGACTTCAAGAAGTCAAATCACAGTCCAAGATGGCAGCC  
 AAAGCCAAGAAGATCTTTGCTGAATTCATCGCAATCCAGGCTTCAAAGAGGTAAACCTGGACTCCTACA  
 CACGAGAACACACCAAGGAGAATCTGCAGAGCATACCCGAGGCTGCTTTGACTTGGCACAGAAACGTAT  
 CTTTGGGCTCATGGAGAAGGACTTTACCCTCGCTTCTCCGCTCTGACCTTACCTGGACCTCATTAAAC  
 CAGAAGAAGATGAGTCCCCCGCTC

**ACGCGTACGCGGCCGCTCGAG** – GFP Tag – GTTTAA

**Protein Sequence:**

>MG208960 representing BC033449  
 Red=Cloning site Green=Tags(s)

MFETEADEKEMPLVEGKGPAAEPAPSKNPSGQELPPGQDLPPSKDPSPSQELPAGQDLPPSKDPSPSQ  
 ELPAGQDLPPSKDPSPSQELPVGQDLPPRKDSSGQEAAPGPESPSSEDIATCPKPPQSPETSTSKDPSPPG  
 QGSSPTTELPSCQGLPAGQESTSQDPLLSQEPPIPESSASVQKRLPSQESPSLGLPEKDLAEQTISS  
 GEPPVATGAVLPASRPNFVIPEVRLDNAYSQLDGAHGGSSGEDEDAEEGEEGEGEEDDDTSDNYGD  
 RSEAKRSSLIETGQGAEGGFLRVQNSLRRTTHSEGLLQESRGPFCASDTTLHCSDGEGATSTWAI  
 PSPRTLKKEKLRNGGSMHHLSLFFTGHRKMSGTDLTECDEASRKRKSKNIAKDMKNKLAIFRRRNESPGAQPA  
 SKTDKTKTSFKPTSEEALKWSESLEKLLHKGYLEVFAQFLRTEFSEENLEFWLACEDFKKVKSSQSKMAA  
 KAKKIFAEFIAIQACKEVNLDSTREHTKENLQSI TRGCFDLAQKRIFGLMEKDSYPRFLRSDLYLDLIN  
 QKKMSPPL

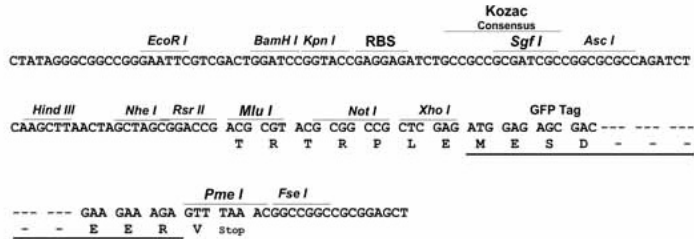
**TRTRPLE** – GFP Tag – V

**Restriction Sites:**

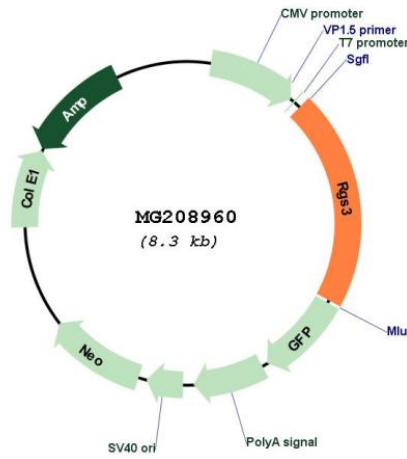
Sgfl-MluI

**Cloning Scheme:**

Cloning sites used for ORF Shutting:



**Plasmid Map:**



ACCN: BC033449  
 ORF Size: 1704 bp

<b>OTI Disclaimer:</b>	The molecular sequence of this clone aligns with the gene accession number as a point of reference only. However, individual transcript sequences of the same gene can differ through naturally occurring variations (e.g. polymorphisms), each with its own valid existence. This clone is substantially in agreement with the reference, but a complete review of all prevailing variants is recommended prior to use. <a href="#">More info</a>
<b>OTI Annotation:</b>	This clone was engineered to express the complete ORF with an expression tag. Expression varies depending on the nature of the gene.
<b>Components:</b>	The ORF clone is ion-exchange column purified and shipped in a 2D barcoded Matrix tube containing 10ug of transfection-ready, dried plasmid DNA (reconstitute with 100 ul of water).
<b>Reconstitution Method:</b>	<ol style="list-style-type: none"><li>1. Centrifuge at 5,000xg for 5min.</li><li>2. Carefully open the tube and add 100ul of sterile water to dissolve the DNA.</li><li>3. Close the tube and incubate for 10 minutes at room temperature.</li><li>4. Briefly vortex the tube and then do a quick spin (less than 5000xg) to concentrate the liquid at the bottom.</li><li>5. Store the suspended plasmid at -20°C. The DNA is stable for at least one year from date of shipping when stored at -20°C.</li></ol>
<b>RefSeq:</b>	<a href="#">BC033449.1</a>
<b>RefSeq Size:</b>	2821 bp
<b>RefSeq ORF:</b>	1706 bp
<b>Locus ID:</b>	50780
<b>Cytogenetics:</b>	4 33.19 cM
<b>Gene Summary:</b>	Down-regulates signaling from heterotrimeric G-proteins by increasing the GTPase activity of the alpha subunits, thereby driving them into their inactive GDP-bound form. Down-regulates G-protein-mediated release of inositol phosphates and activation of MAP kinases. [UniProtKB/Swiss-Prot Function]