

## Product datasheet for **MG208953**

### **Mpp3 (NM\_007863) Mouse Tagged ORF Clone**

#### **Product data:**

|                           |   |
|---------------------------|---|
| Product Type:             | Expression Plasmids                     |
| Product Name:             | Mpp3 (NM_007863) Mouse Tagged ORF Clone |
| Tag:                      | TurboGFP                                |
| Symbol:                   | Mpp3                                    |
| Synonyms:                 | 6430514B01; Dlgh3                       |
| Mammalian Cell Selection: | Neomycin                                |
| Vector:                   | pCMV6-AC-GFP (PS100010)                 |
| E. coli Selection:        | Ampicillin (100 ug/mL)                  |



[View online »](#)

**ORF Nucleotide Sequence:**

>MG208953 representing NM\_007863  
 Red=Cloning site Blue=ORF Green=Tags(s)

TTTTGTAATACGACTCACTATAGGGCGGCCGGAATTCGTCGACTGGATCCGGTACCGAGGAGATCTGCC  
 GCC**GCGATCGCC**

ATGCCAGTACTGTCTGAAGACTCGGTTTGCATGAGACCTGGCACTGCTCACCTCTCAGCTCAGGCCTG  
 ACTCCAACCATAGGGAGGAGATGGGCTTCTGAGAGATGTCTCAGTGAGAAGAGCCTCAGTTATTTAAT  
 GAAGATTCATGAGAACTCCGCTATTATGAGAGGCAGAGTCCAACCCAGTCTCCACAGCGCCATGGCC  
 CTTGCTGAGGATGTGATGGAGGAGCTGCAGGCTGCCTCTGTGCACAGTATGAGCGGGAGCTGCTGCAGC  
 TGCTGTCCACCCCCACCTCAGGCTGTGCTCATGGTCCACGACACGGTTGCCAGAAGAACTTCGATCC  
 TGTTCTGCCCCCTCTGCCGATAACATCGATGAGGATTTGAAGAGGAGTCGGTGAAGATTGTTGCTTGTG  
 GTGAAGAATAAGGAGCCCTGGGTGCCACCATCCGACGGGATGAGCATTGGGGGCTGTTGTGGTGGCCA  
 GGATCATGCGAGGGGGTGCAGACCGGAGCGGTCTGGTCCACGTTGGCGATGAGCTCCGAGAGGTGAA  
 TGGGATCGCCGCTCTGCACAAGCGTCCAGACGAGATCAGCCAAATCTGGCCCAATCCCAGGGATCCATT  
 ACCCTGAAGATCATCCCTGCCACCCAGGAGGAAGACCGCTTCAAAGACAGCAAGGTATTCATGCGTGCC  
 TCTTCCATATGACCCTCGGGAGGACCGTGCCATCCCCTGCCAGGAGGCTGGCCTGCCCTTCCAGCGGAG  
 GCAGGTCTGGAGGTGGTGGCCAAAGTACCCACCTGGTGGCAGGCCAAGAGAGTAGGCGACACCAAC  
 CTTGAGCTGGCCTCATCCCATTAAGCAGTTCAGGAGAGGCGGCTGAGCTACCGGAGAACCCTGGCA  
 CTTACCAAGCCCCAGAAGTTCAAAAGCCCCCTATGATCAGCCTTGTGACAAAGAGACCTGTGACTG  
 TGATGGTACTTTAAAGGACATTATGTGGCTGGTCTTCGAGAAGCTTCGGCTGGGCTGCAGGGAGAGG  
 CTGGGTGGCTCGCAGGAAGCAAAGGTCCCTACAGGAGCTGAGTCTCAGGTGCTGCTGACGTACGAGGAAG  
 TGCCAGGTACCAACACCAGCCTGGGAGCGGCCCGCTGGTGGTCTCATTGGGTCCCTGGGAGGCCA  
 CCTCCATGAGCTGAAGCAAAGGTGGTGGCTGAGGACCCCGAGCAGTTTGCCGTTGACAGTCCACACACC  
 ACCAGGCCCGGAAGAGCCACGAGAGAGACGGGTGGAGTACCATTTTGTCTCCAAGCAAGCGTTTGAGG  
 CCGACGTACATCACAAAGTTCCTGGAGCATGGAGAATATAAGAGAATCTCTACGGCACCAGCCTAGA  
 GGCCATTCAGGCTGTTATGGCAAAAACAAAGTGTGTTTGGTGGATGTAGAACCAGAAGCACTAAGACAC  
 CTGAGGACCCCTGAGTTAAGCCCTATGTTATATTTGTGAAGCCTGCAATTCAGGAGAGAAGGAAGACGC  
 CGCCGGTGTCCCAGACTCTGAGGACATAGCATCTTCACTTGATGAACAGCAGCAAGAGATGGCCGCTC  
 TGCTGCCTTCATAGATCAGCACTATGGCACCTGATAGACTGTGCTCGTGAGGACAGACTGCAGGAG  
 GCCTGCAGCCAGCTCAGAGCTGCATAGAGACGCTGAGCAAGGACTTCTGGGTACCCATCAGCTGGG  
 TGAGG

**ACGCGT**ACGCGGCCGCTCGAG - GFP Tag - GTTTAA

**Protein Sequence:**

>MG208953 representing NM\_007863  
 Red=Cloning site Green=Tags(s)

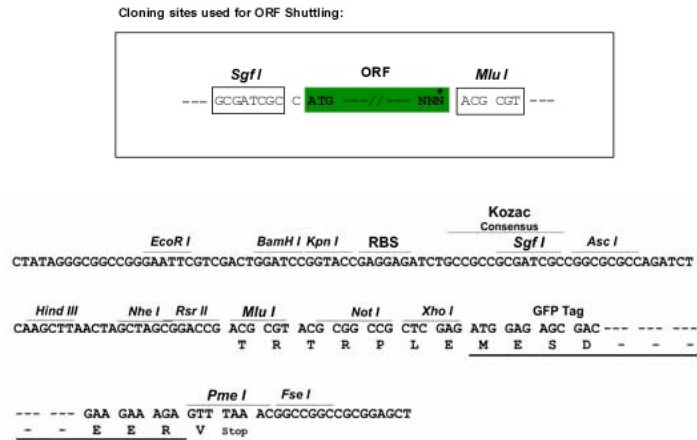
MPVLSSEDSGLHETLALLTSQLRPDSNHREEMGFLRDVFSEKLSYLMKIHEKLRYYERQSPTPVLHSAMA  
 LAEDVMEELQAASVHSDERELLQLLSTPHLRVLMVHDTVAQKNFDPVLPPLPDNIDEDFEEESVKIVRL  
 VKNKEPLGATIRRDEHSGAVVVARIMRGGAAADRSLVHVGDELREVNGI AVLHKRPDEISQILAQSQSGSI  
 TLKIIPATQEEDRFKDSKVFMRALFHYDPREDRAIPCQEAGLPFQRRQVLEVVSQDDPTWWQAKRVGDTN  
 LRAGLIPSKQFQERRLSYRRTTGLPSPQNFKKPPYDQPCDKETCDCDGYFKGHYVAGLRRSFRLGCRER  
 LGGSQEAQVPTGAESQVLLTYEEVARYQHQPGERPRLVVLIGSLGAHLHELKQRVVAEDPQQFVAVAPHT  
 TRPRKSHERDQVEYHFVSKQAFEADVHNKFLHGEYKENLYGTSLEAIQAVMAKNKVLVDVEPEALRH  
 LRTPEFKPYVIFVKPAIQERRKTPPVSPDSEDIASSLDEQQQEMAASAFAIDQHYGHLIDTVLVRQDLQE  
 ACSQLRAVIETLSKDTSWPISWVR

**TRTRPLE** - GFP Tag - V

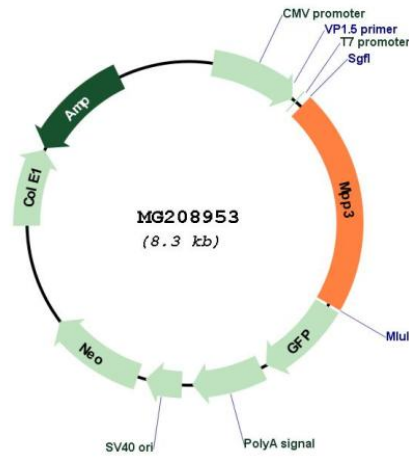
**Restriction Sites:**

Sgfl-MluI

Cloning Scheme:



Plasmid Map:



ACCN: NM\_007863

ORF Size: 1755 bp

|                               |   |
|-------------------------------|---|
| <b>OTI Disclaimer:</b>        | The molecular sequence of this clone aligns with the gene accession number as a point of reference only. However, individual transcript sequences of the same gene can differ through naturally occurring variations (e.g. polymorphisms), each with its own valid existence. This clone is substantially in agreement with the reference, but a complete review of all prevailing variants is recommended prior to use. <a href="#">More info</a>  |
| <b>OTI Annotation:</b>        | This clone was engineered to express the complete ORF with an expression tag. Expression varies depending on the nature of the gene.  |
| <b>Components:</b>            | The ORF clone is ion-exchange column purified and shipped in a 2D barcoded Matrix tube containing 10ug of transfection-ready, dried plasmid DNA (reconstitute with 100 ul of water).  |
| <b>Reconstitution Method:</b> | <ol style="list-style-type: none"><li>1. Centrifuge at 5,000xg for 5min.</li><li>2. Carefully open the tube and add 100ul of sterile water to dissolve the DNA.</li><li>3. Close the tube and incubate for 10 minutes at room temperature.</li><li>4. Briefly vortex the tube and then do a quick spin (less than 5000xg) to concentrate the liquid at the bottom.</li><li>5. Store the suspended plasmid at -20°C. The DNA is stable for at least one year from date of shipping when stored at -20°C.</li></ol> |
| <b>RefSeq:</b>                | <a href="#">NM_007863.2</a> , <a href="#">NP_031889.2</a>   |
| <b>RefSeq Size:</b>           | 2860 bp   |
| <b>RefSeq ORF:</b>            | 1758 bp   |
| <b>Locus ID:</b>              | 13384   |
| <b>Cytogenetics:</b>          | 11 65.48 cM   |