

Product datasheet for **MG208941**

Cdc45 (NM_009862) Mouse Tagged ORF Clone

Product data:

Product Type:	Expression Plasmids
Product Name:	Cdc45 (NM_009862) Mouse Tagged ORF Clone
Tag:	TurboGFP
Symbol:	Cdc45
Synonyms:	Cdc45l
Mammalian Cell Selection:	Neomycin
Vector:	pCMV6-AC-GFP (PS100010)
E. coli Selection:	Ampicillin (100 ug/mL)



[View online »](#)

ORF Nucleotide Sequence:

>MG208941 representing NM_009862
 Red=Cloning site Blue=ORF Green=Tags(s)

TTTTGTAATACGACTCACTATAGGGCGGCCGGAATTCGTCGACTGGATCCGGTACCGAGGAGATCTGCC
 GCC**CGGATCGCC**

ATGTTCTGTGACCGATTTCCGCAAGGAGTCTACGAGACGGTCCACAACCAGAGGGTCTTCTCTTTGTGG
 CCTCGGACGTGGATGCCTTGTGTGCTTGAAGATCCTCCAGGCCCTGTTTCAGTGTGACCACGTCCAGTA
 TACGCTGGTTCGGTTTTCTGGGTGGCAAGAACTTGAAACTGCATATCTTGAACATAAAGAGCAGTCTCC
 TATTTTCATCCTCATAAACTGTGGAGCCAACGTGGACCTGTTGGATATCCTTCAGCCTGATGAAGACAGTA
 TATTTTTTGTGTGTGATACCCACAGGCCAGTGAACGTTGTGAATGTGTACAATGACACTCAGATCAAATT
 GCTTATTAACAAGAGGATGACCTTGAGGTTCTGCCTACGACGACATCTTTAGAGATGAAGCAGAGGAT
 GAAGATCTTTAGACAGTACGGTGTGGGTGAGGCCTCAGAGAAGCGCACACGGTTAGAAGAGGAGA
 TAGTGGAGCGAAACAGGAAGAGGAGGCAGCGCAGGGAGTGGGAGGCCGAAAGAAAGACATCCTCTTTGA
 CTACGAGCAGTATGAATATTATGGGACATCGTCGGCCATGGTGTGTTTGACCTGGCGTGGATGATGTCC
 AAGGACCTGAATGACATGCTGTGGTGGGCCATTGTTGGACTGACAGACCAGTGGGTGCATGACAAGATCA
 CTCAAATGAAGTACGTGACTGATGTTGGCATCCTGCAGCGTCATGTGTCCGTCATAAACCACCGAAACGA
 GGCGGAGGAGAACATGCTCTGTAGACTGCACCCGGATCTCCTTCGAGTATGACCTCTGCCTGGTACTG
 TATCAGCACTGGTCCCTCCATGAAAGCCTGTACAACACCAGCTACACAGCAGCCAGGTTTAAAGCTGGT
 CTGTGCATGGGCAGAAACGACTCCAGGAGTTCTTGCAGACATGGGGCTTCCCCTGAAGCAAGTCAAGCA
 GAAATTTAGTCCATGGACGTTTCTTGAAGGGGAATCTGCGAGAAATGATTGAAGAATCTGCAAATAAA
 TTTGGGATGAAGGACATGCGTGTACAGACTTTAGCATTAGTTGGGTTCAAGCATAAAATCTCTGGCCA
 GTGATGTGCTCTTTGCCACCATGTCTAATGGAGAGTCTGAGAAGGATGGCTCAGGGACAGACCATCA
 CATCCAGGCTCTCGATAGCCTCTCCAGGAGTAACCTGGACAAGCTATACCTTGGTCTAGAGCTCGCCAAG
 AAGCACCTCCAAGCCACACAACAGACCATCGCCAGCTGTCTGTACCAACCTCGTCACTTCCCAGGGCC
 CTTTTCTACTGCTCACTCATGGAGGGCACTCCAGATGTACCCTGTTTTCCAAGCCAGCATCCTTGAG
 TCTGCTCAGCAGACATCTGCTCAAGTCCTTGTGTACTCGACAAAGAATCGACGATGCAAGCTGCTGCC
 CTGGTGTGGCTGCCCGCTGAGCGTGGAAACAGGGCACAGTACCCTGGTGGGCATCCCCCAGAGACTG
 ATAGCTCGGATAGAAAGAACTTTTTTGGTCGGGCTTTTGAAGGCAGCAGAAAGCACCAGCTCTCGGAC
 TCTACACAATTACTTTGACCTCTCAGTAATTGAGCTGAAGGCTGAGGACCGGAGCAAGTTCTGGACGCT
 CTTGTGCTACTGCTGTCC

ACGCGTACGCGGCCGCTCGAG - GFP Tag - GTTTAA

Protein Sequence:

>MG208941 representing NM_009862
 Red=Cloning site Green=Tags(s)

MFVDFRKEFYETVHNQRVLLFVASDVALCACKILQALFQCDHVQYTLVPVSGWQELETAYLEHKEQFS
 YFILINCGANVDLLDILQPEDSIFVCDTHRPVNVVNYNDTQIKLLIKQEDDLEVPAYDDIFRDEAED
 EDLSDSDGDGSEPESEKTRLEEEIVERNRKRRQRREWEARRKDILFDYEQYEEYGTSSAMVMFDLAWMS
 KDLNDMLWVAIVGLTDQWVHDKITQMKYVTDVIGILQRHVSRRHNRNEAENMLSVDCTRISFEYDLCLVL
 YQHWSLHESLYNTSYTAARFKLWSVHGQKRLQEFADMGLPLKQVKQKFSMDVSLKGNLREMIEESANK
 FGMKDMRVQTFSIQFGFKHKFLASDVVFATMSLMESPEKDGSGTDHF IQALDSLRSNLDKLYLGLLELAK
 KHLQATQQTIASCLCTNLVTSQGPFLYCSLMEGTPDVTLFSKPASLSLLSRHLLKSFVYSTKNRRCKLLP
 LVMAAPLSVEQGTVTVVGIPPETDSSDRKNFFGRAFEKAAESTSSRTLHNYFDLSVIELKAEDRSKFLDA
 LVSLLS

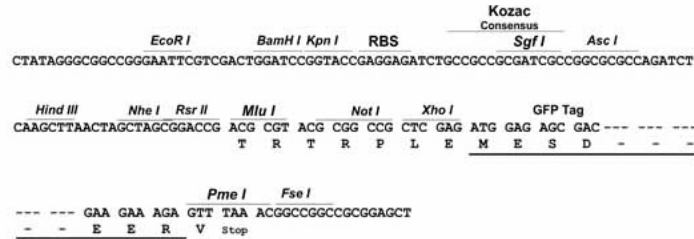
TRTRPLE - GFP Tag - V

Restriction Sites:

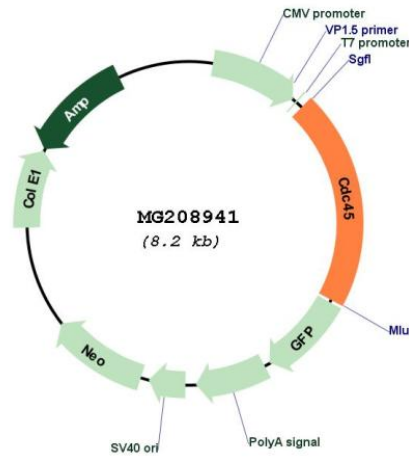
Sgfl-MluI

Cloning Scheme:

Cloning sites used for ORF Shutting:



Plasmid Map:



ACCN: NM_009862
 ORF Size: 1698 bp

OTI Disclaimer: Due to the inherent nature of this plasmid, standard methods to replicate additional amounts of DNA in E. coli are highly likely to result in mutations and/or rearrangements. Therefore, OriGene does not guarantee the capability to replicate this plasmid DNA. Additional amounts of DNA can be purchased from OriGene with batch-specific, full-sequence verification at a reduced cost. Please contact our customer care team at custsupport@origene.com or by calling 301.340.3188 option 3 for pricing and delivery.

The molecular sequence of this clone aligns with the gene accession number as a point of reference only. However, individual transcript sequences of the same gene can differ through naturally occurring variations (e.g. polymorphisms), each with its own valid existence. This clone is substantially in agreement with the reference, but a complete review of all prevailing variants is recommended prior to use. [More info](#)

OTI Annotation: This clone was engineered to express the complete ORF with an expression tag. Expression varies depending on the nature of the gene.

Components: The ORF clone is ion-exchange column purified and shipped in a 2D barcoded Matrix tube containing 10ug of transfection-ready, dried plasmid DNA (reconstitute with 100 ul of water).

Reconstitution Method:

1. Centrifuge at 5,000xg for 5min.
2. Carefully open the tube and add 100ul of sterile water to dissolve the DNA.
3. Close the tube and incubate for 10 minutes at room temperature.
4. Briefly vortex the tube and then do a quick spin (less than 5000xg) to concentrate the liquid at the bottom.
5. Store the suspended plasmid at -20°C. The DNA is stable for at least one year from date of shipping when stored at -20°C.

RefSeq: [NM_009862.2](#), [NP_033992.2](#)

RefSeq Size: 2161 bp

RefSeq ORF: 1701 bp

Locus ID: 12544

UniProt ID: [Q9Z1X9](#)

Cytogenetics: 16 11.63 cM

Gene Summary: Required for initiation of chromosomal DNA replication.[UniProtKB/Swiss-Prot Function]