

## Product datasheet for **MG208935**

### Ces1d (NM\_053200) Mouse Tagged ORF Clone

#### Product data:

Product Type:	Expression Plasmids
Product Name:	Ces1d (NM_053200) Mouse Tagged ORF Clone
Tag:	TurboGFP
Symbol:	Ces1d
Synonyms:	Ces3; TGH
Mammalian Cell Selection:	Neomycin
Vector:	pCMV6-AC-GFP (PS100010)
E. coli Selection:	Ampicillin (100 ug/mL)



[View online »](#)

**ORF Nucleotide Sequence:**

>MG208935 representing NM\_053200  
 Red=Cloning site Blue=ORF Green=Tags(s)

TTTTGTAATACGACTCACTATAGGGCGGCCGGGAATTCGTCGACTGGATCCGGTACCGAGGAGATCTGCC  
 GCC**CGCATCGCC**

ATGGGCCTCTACCCTCTGATATGGCTTTCTCTTGCTGCGTGCACAGCTTGGGGTACCCATCCTCACCAC  
 CTGTGGTGAACACTGTTAAAGGCAAAGTCTGGGGAAGTATGTCAATTTGGAAGGATTACACAGCCTGT  
 GGCTGTTTTCTGGGAGTCCCCTTTGCCAAGCCCCCTCTTGCTCCTTGAGATTTGCTCCACCACAGCCT  
 GCAGAGCCCTGGAGCTTCGTGAAGAACCACCTCCTACCCGCCTATGTGCTCAGGATGCTGTTGGAG  
 GGCAGGTGCTCAGAGCTCTTACCAACAGGAAGGAGAACATTCCTTTACAGTTTTCTGAAGACTGCCT  
 CTACCTGAATATTTACACTCCTGCTGACTTGACAAAGAACAGCAGACTACCAGTGATGGTGTGGATCCAT  
 GGAGTGGACTGGTGGTGGGCGGAGCATCCACCTATGATGGACTGGCCCTCTCTGCCATGAAAATGTGG  
 TGGTGGTACCATTAGTATCGCCTTGGCATCTGGGGATTCTTCAGCACTGGGGATGAACACAGTCGGGG  
 AACTGGGGTCACTTGGACCAGGTGGCTGCACTACGCTGGTCCAGGACAACATTGCCAACTTTGGGGC  
 AACCCAGGCTCGGTGACCATCTTTGGAGAGTCAAGGAGGTTTCAAGTGTCTGTCTCTGTCTGTCTC  
 CTTTGGCCAAGAACCCTTCCACAGGGCCATTTCTGAGAGTGGTGTGCCCTCACTGCTGCTGCTGATTAC  
 AACAGATGTAAGCCATTGCTGGTCTGGTTGCTACTCTTTCTGGGTGTAAAACCTACCACATCAGCTGTT  
 ATGGTTCAATGCTGCGCCAGAAGACAGAGGATGAACTACTGGAGACCTCACTAAAATGAACTTTTTTA  
 AACTGGACTTACTTGGAAATCCAAAAGAGAGCTATCCCTTCTCCCTACTGTGATTGATGGAGTAGTTCT  
 GCCAAAGGCACCAAGAGATCCTGGCTGAGAAGATTTCAAGCACTGTCCCCTACATAGTGGGCATCAAC  
 AAGCAAGAGTTTGGCTGGATCATTCCAACGCTTATGGGCTATCCACTCGTGAAGGCAAAGTGGACCAGA  
 AGACAGCAATTTCTCTTGTGGAAGTCTACCAACACTTAAAATCTCTGAGAATATGATCCAGTGGT  
 CGCTGAGAAGTATTTAGGAGGGACAGATGACCTCACAAAAGAAAGACCTGTTCCAGGACTTGATGGCT  
 GATGTGGTATTTGGTGTCCCATCAGTATTGTGTCTCGAAGTCAACAGAGATGCTGGAGCCTCCACCTATA  
 TGTATGAGTTTGTATCGCCAAAGCTTTGTATCGGCCATGAGACCCAAGGCAGTAATAGGAGACCATGG  
 TGATGAGATCTTCTCAGTATTTGGATCTCCATTTTTAAAAGATGGTGCCTCAGAAGAGGAGACCAACCTC  
 AGCAAGATGGTATGAAATCTGGGCCAACTTTGCTCGGAATGGGAACCCCAATGGTGGAGGGCTGCCCC  
 ACTGGCCAGAATATGACCAGAAGGAAGGTATCTGAAGATTGGTGCCTCAACTCAGGCAGCCAGAGGCT  
 GAAGGACAAAAGTGAAGTTTTGGGCTGAGCTCAGGGCCAAGGAGTCAAGCCAGAGGCCATCCCACAGG  
 GAACATGTTGAGCTC

**ACGCGTACGCGGCCGCTCGAG** - GFP Tag - GTTTAA

**Protein Sequence:**

>MG208935 representing NM\_053200  
 Red=Cloning site Green=Tags(s)

MGLYPLIWLSLAACTAWGYPPSSPPVNTVKGKVLGKYVNLEGFTQPVAVFLGVVPAKPPPLGSLRFAPPQP  
 AEPWSFVKNTTSYPPMCSQDAVGGQVLSLFTNRKENIPLQFSEDCLYLNIYTPADLTKNSRLPVMWVH  
 GGGLVVGASTYDGLALSAHENVVVTIQYRLGIWGFSTGDEHSRGNWGHLDQVAALRWVQDNIAFNGG  
 NPGSVTIFGESAGGFSVSVLVLSPKLNLFHRAISESGVSLTAALITTDVKPIAGLVATLSGCKTTTSAV  
 MVHCLRQKTEDELLETSLKLNLFKLDLLGNPKESYPFLPTVIDGVVLPKAPPEILA EKSFSTVPYIVGIN  
 KQEFGWIIPTLMGYPLAEGKLDQKTANLLWKSYP TLKISENMIPVVAEKYLGTTDDLTKKKDLFQDLMA  
 DVVFGVPSVIVSRSHRDAGASTYMYEFYRPSFVSAMRPKAVIGDHGDEIFSVFGSPFLKDGASEEETNL  
 SKMVMKFWANFARNGNPNGGGLPHWPEYDQKEGYLKIGASTQAAQRLKDKKEVSFWAELRAKESARQPSHR  
 EHVEL

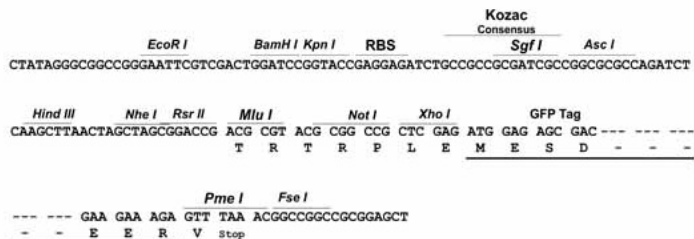
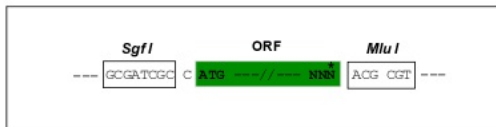
**TRTRPLE** - GFP Tag - V

**Restriction Sites:**

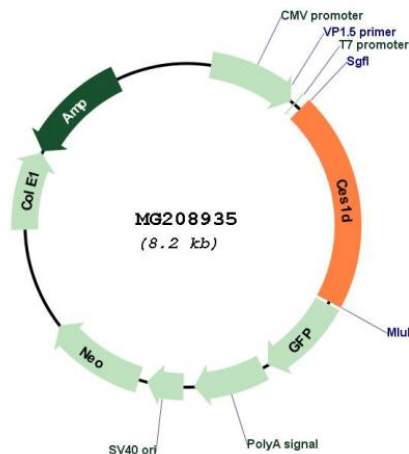
Sgfl-MluI

Cloning Scheme:

Cloning sites used for ORF Shutting:



Plasmid Map:



ACCN: NM\_053200  
 ORF Size: 1695 bp

<b>OTI Disclaimer:</b>	The molecular sequence of this clone aligns with the gene accession number as a point of reference only. However, individual transcript sequences of the same gene can differ through naturally occurring variations (e.g. polymorphisms), each with its own valid existence. This clone is substantially in agreement with the reference, but a complete review of all prevailing variants is recommended prior to use. <a href="#">More info</a>
<b>OTI Annotation:</b>	This clone was engineered to express the complete ORF with an expression tag. Expression varies depending on the nature of the gene.
<b>Components:</b>	The ORF clone is ion-exchange column purified and shipped in a 2D barcoded Matrix tube containing 10ug of transfection-ready, dried plasmid DNA (reconstitute with 100 ul of water).
<b>Reconstitution Method:</b>	<ol style="list-style-type: none"><li>1. Centrifuge at 5,000xg for 5min.</li><li>2. Carefully open the tube and add 100ul of sterile water to dissolve the DNA.</li><li>3. Close the tube and incubate for 10 minutes at room temperature.</li><li>4. Briefly vortex the tube and then do a quick spin (less than 5000xg) to concentrate the liquid at the bottom.</li><li>5. Store the suspended plasmid at -20°C. The DNA is stable for at least one year from date of shipping when stored at -20°C.</li></ol>
<b>RefSeq:</b>	<a href="#">NM_053200.2</a> , <a href="#">NP_444430.2</a>
<b>RefSeq Size:</b>	1966 bp
<b>RefSeq ORF:</b>	1698 bp
<b>Locus ID:</b>	104158
<b>UniProt ID:</b>	<a href="#">Q8VCT4</a>
<b>Cytogenetics:</b>	8 C5
<b>Gene Summary:</b>	Major lipase in white adipose tissue. Involved in the metabolism of xenobiotics and of natural substrates. Hydrolyzes triacylglycerols and monoacylglycerols, with a preference for monoacylglycerols. The susceptibility of the substrate increases with decreasing acyl chain length of the fatty acid moiety. Catalyzes the synthesis of fatty acid ethyl esters. [UniProtKB/Swiss-Prot Function]