

Product datasheet for **MG208914**

Kcnv2 (NM_183179) Mouse Tagged ORF Clone

Product data:

Product Type:	Expression Plasmids
Product Name:	Kcnv2 (NM_183179) Mouse Tagged ORF Clone
Tag:	TurboGFP
Symbol:	Kcnv2
Synonyms:	KV11.1
Mammalian Cell Selection:	Neomycin
Vector:	pCMV6-AC-GFP (PS100010)
E. coli Selection:	Ampicillin (100 ug/mL)



[View online »](#)

ORF Nucleotide Sequence:

>MG208914 representing NM_183179
 Red=Cloning site Blue=ORF Green=Tags(s)

TTTTGTAATACGACTCACTATAGGGCGGCCGGGAATTCGTCGACTGGATCCGGTACCGAGGAGATCTGCC
 GCC**GCGATCGCC**

ATGCTGAAACAGAGCAACGAGAGGAGATGGTCCTTGAGCTACAAGCCCTGGAGTACCCAGAGACTGAGG
 ATGTGCCCAACACTGGGAGCAACCAACCCGAGGAGCATCTGCTCCTTGGGAGCCCGACTGGCTCTCA
 GGCCAGCATCGCACCAATGGACCGAGGGCAACTACAATTACTACATTGAGGAAGATGAGGACTGCGGG
 GAGGAGGGGGAGGACTGGAAGGATGATCTTGCCGAAGAGAATCAGAAGGCGGAGTGCCTCACAAGCTCC
 TGGATGGCCACAACGATACTCCAGCCAAATGTCCACGCTGAAAGTGAACGTAGGCGGCCACAGCTATCT
 GCTGGAATGCTGTGAGCTGGCCAACTACCCAAAACGCGCCTGGGTGCGCTGGCCACCTCCACCCTCGC
 AGAGGCCAGCTGGGCCTGTGTGATGACTACGAGGCACAGACAGAGTACTTCTTTGACCGTGACCCAG
 CGGTCTTCCAGCTCATCTACAATTCTACACATCCGGGGTGTGCTGGTGCAGAGCAGCTGTGTCCAGC
 CAGCTTTCTCGAGGAGCTGGGCTACTGGGGAGTGAGGCTCAAATACACGCCACGCTGCTGTGCGATCTGC
 TTCGAGGAGCGGAGGGATGAACTGAGCGAGCAACTGAAGATCAAAGGGAGCTGCGCGCGCAGGCGCAGG
 CCGAGGAGGCCGAGGAGCTCTTTCGGGACATGCGCTTCTATGGACCACAACGTC AACGCCTCTGGAACCT
 CATGGAGAAGCCCTTTTCTCTGTGGCCGCAAGGCCATGGGGTGGCCCAACCTCTTCGTGCTCATC
 TCCGTGGTGGCCCTGGCGCTCAACACGTTGGAGGAGATGCAGCACCAGGCGGAGCAGGGCACAGGTGGT
 GGGACCCAGGCCCATCTTGAGCACGTGGAGATGCTGTGCGTGGCTTTCTTCACTCTGGAGTTCCTGCT
 GCGCCTCGCCTCCACCCCTAACCTGCAGCGCTTTCACGACGCGCCCTCAACCTAGTGGACCTGGTGGCC
 ATCTGCTCTTCTACCTGCAGCTGCTGCTCGAGTGCTTACGAGCGAGGACCAGAGGCACAACAAGGACT
 CCCCAGAGAACACGACTGGAGACCGTGGCCGAGTGGGCAAGGTAGGCCAGGTGCTGCCATCATCGC
 CCTCATGCGCATCTTCCGAATCCTCAAGCTGGCTCGCCACTCCACAGGGCTGCGGGCCTTTGGCTTACC
 CTGCGCCAGTGCTACCAGCAGGTGGGCTGCCTGATGCTCTTCACTATGGGCATCTTCTCCTTCTCTG
 CAGCTGTCTACTCGTGGAGCACGACGTGCCTGGTACCAACTTACCAGCATCTCCATGCCTGGTGGTG
 GGCCGCGGTAAGCATCTCCACCGTGGGCTATGGAGACATGTACCCGGAGACCCACCTGGGCAGGCTTTT
 GCCTTCTCTGCATCGCTTTTGGCATTATTCTCAATGGGATGCCATTTCCATCTCTACAACAAGTTCT
 CCGATTACTACAGCAAGCTCAAAGCTTACGAGTACACCGCCATCCGGAGGGAACGAGGAAAGGTCAACT
 TATGCAGAGGCCACAAGAAAATGGCTGAATGTTTATCTGAAAGTCATGCACAGTCCACCACAAGGCAA
 GAGAAT

ACGCGTACGCGGCCGCTCGAG - GFP Tag - GTTTAA

Protein Sequence:

>MG208914 representing NM_183179
 Red=Cloning site Green=Tags(s)

MLKQSNERRWSLSYKPWSTPETEDVPNTGNSNQHRRSICSLGARTGSQASIAQWTEGNYNYIEEDEDCC
 EEGEDWKDDLAEENQKAECLTSLLDGHNDTPAQMSTLKVNVGGHSYLLECCELANYPKTRLGRLATSTTR
 RGQLGLCDDYEAQTDEYFFDRDPAVFQLIYNFYTSVGLLVRDELCPRSFLEELGYWVRLKYTPRCCRIC
 FEERRDELSEQLKIQRELRAQAQAEAEELFRDMRFYGPQRQLWNLMEKPFSSVAAKAMGVATNLFVLI
 SVVALALNTEEMQHQAEGTGGDPRPILHVEMLCVAFFTFLEFLLRLASTPNLQRFARSALNLDLVA
 ILPFYLQLLLECFSEDQRHNKDSPREHLETVGRVGVKGVQLRIMRLMRIFRILKLARHSTGLRAFGFT
 LRQCYQQVGLMLFITMGIFSFAAVYSVEHDVPGTNFTSILHAWWWAAVSIISTVGYGDMYPETHLGRFL
 AFLCIAFGIILNGMPI SILYNKFSDYYSKLYEYTAIRRERGVNFMQRATKKMAECLSESHAQSTTRQ
 EN

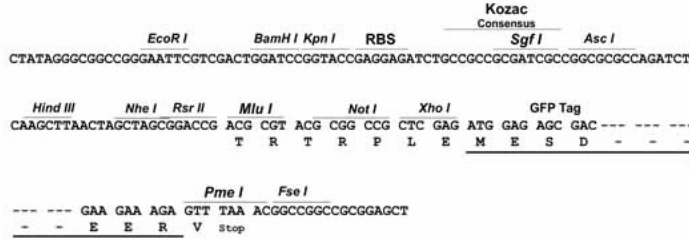
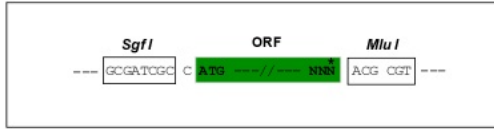
TRTRPLE - GFP Tag - V

Restriction Sites:

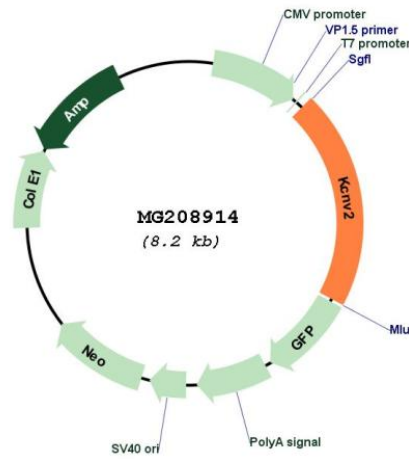
SgfI-MluI

Cloning Scheme:

Cloning sites used for ORF Shutting:



Plasmid Map:



ACCN: NM_183179
 ORF Size: 1686 bp

OTI Disclaimer:	The molecular sequence of this clone aligns with the gene accession number as a point of reference only. However, individual transcript sequences of the same gene can differ through naturally occurring variations (e.g. polymorphisms), each with its own valid existence. This clone is substantially in agreement with the reference, but a complete review of all prevailing variants is recommended prior to use. More info
OTI Annotation:	This clone was engineered to express the complete ORF with an expression tag. Expression varies depending on the nature of the gene.
Components:	The ORF clone is ion-exchange column purified and shipped in a 2D barcoded Matrix tube containing 10ug of transfection-ready, dried plasmid DNA (reconstitute with 100 ul of water).
Reconstitution Method:	<ol style="list-style-type: none"> 1. Centrifuge at 5,000xg for 5min. 2. Carefully open the tube and add 100ul of sterile water to dissolve the DNA. 3. Close the tube and incubate for 10 minutes at room temperature. 4. Briefly vortex the tube and then do a quick spin (less than 5000xg) to concentrate the liquid at the bottom. 5. Store the suspended plasmid at -20°C. The DNA is stable for at least one year from date of shipping when stored at -20°C.
RefSeq:	NM_183179.1 , NP_899002.1
RefSeq Size:	5092 bp
RefSeq ORF:	1689 bp
Locus ID:	240595
UniProt ID:	Q8CFS6
Cytogenetics:	19 C1
Gene Summary:	Potassium channel subunit. Modulates channel activity by shifting the threshold and the half-maximal activation to more negative values (By similarity).[UniProtKB/Swiss-Prot Function]