

Product datasheet for **MG208911**

Cdc6 (NM_001025779) Mouse Tagged ORF Clone

Product data:

Product Type:	Expression Plasmids
Product Name:	Cdc6 (NM_001025779) Mouse Tagged ORF Clone
Tag:	TurboGFP
Symbol:	Cdc6
Synonyms:	CDC18L
Mammalian Cell Selection:	Neomycin
Vector:	pCMV6-AC-GFP (PS100010)
E. coli Selection:	Ampicillin (100 ug/mL)



[View online »](#)

ORF Nucleotide Sequence:

>MG208911 representing NM_001025779
 Red=Cloning site Blue=ORF Green=Tags(s)

TTTTGTAATACGACTCACTATAGGGCGGCCGGAATTCGTCGACTGGATCCGGTACCGAGGAGATCTGCC
 GCC**CGCATCGCC**

ATGCCTCAAACCAGATCCGACACACAAGCTACCATCGGTTTTCCGAAAAAGAAGCTATCTAATACCCTGA
 AGAAACCCAATCCCGGATTGTGAAGTAAAACCTAGAAACGTCCAGCCTGTACCCACCCTCCGTGTG
 GGACGTAAAACCTCTGCCTCTCAGTCCCGAAAACGTCTGGGCGATGACAACCTGTGCAACACTCCCGG
 TTATCTCCCTGTTCTCCACAAAGCTGGGCAAGAAAGAAAACGGACCCCTCGCTCACATACGTGGAAGG
 GGTGCAGATTAGTATTCGATGATGAGCCGACATTTAAGGCTTCCCCCAAAAAGAACAAGACAGAGTTCC
 CCAACACCAGATACGTTCTCCTCCGCTCAAAGAAGTCCAGAGAGCAAAGCAGATCTGAGCAGAAATGT
 CCGCCGGAGAAGGAGTCTGTGTATAAGACTGTTCAAGCAAGAAGGCACCTTGTATCAGCAAGCCAAGC
 TCGTCTGAATACAGCTGTCCCGATCGGCTGCCTGCCAGAGAGCAGGAGATGGGTGTCATCAGGAATTT
 TCTGAAGGAGCACATCTGTGGGAAGAAAGCTGGCAGTCTCTACCTTTCTGGCGCTCTGGGACTGGAAAA
 ACTGCCTGTTAAGCCGATTCTGCAAGACTTCAAGAAGGAAGTAAAAGGCTTTAAATCCATCTGCTGA
 ATTGATGTCCCTGAGGAGTGCCAGGCTGTGTTCCAGCTATTGCTCAGGAGATTGGTCCGGAGGAGCT
 GTGCAGACCAGCTGGGAAGGACTTGATGAGAAAAGTGGAAAAGCACTTGACAGCAGAGAAAGGCCCATG
 ATCGTGTGGTGTGGACGAGATGGATCAGCTGGACAGCAAAGGGCAGGATGATTATACACACTGTTTG
 AGTGGCCGTGGCTAAGCAACTCCCGATTGGTGTCTATTGGTATTGCTAATACCCTAGATCTCACGGACAG
 AATTCTGCCGAGACTTGAAGCTAGAGAAAAGTGAAGCCGAGTATTGAACTCCCACCTTATACCAGG
 AATCAGATAGCTGCCATCTGCAGGATCGACTTAGTCAGGTGTCAAAGACCAGGTTCTGGACAGTGTCTG
 CGATCCAGTTCGTGCCCGCAAAGTGTCTGCTGTTTCAGGAGACATCCGTAAGCCGCTGGATGTTTGCAG
 GCGAGCTATAGAAATTGTGGAGTCGGATGTCAGGAGCCAGACAGTCTCAAACCACTCTCCGAATGTAAA
 TCAACCAGCGAGTCGCCGTCGCCAAGCGCTTGGTCTTGTCTCACATATCCCAAGTCATTTCCGAAGTTG
 ATGGGAACAGGTTGACTTTGAGCCAAGAAAACACACAGGATTCCTTCTCTCCAGCAGAAGATCTGGT
 TTGCTCTTTGCTGCTTTTGACCCGGCGCTGAAAATCAAAGAGGTACCCTGGGGAAGTTATATGAAGCC
 TACAGTAGCATCTGTGCAAAACAGCAGGTGACGGCCGTAGACCAGTCTGAGTGTGTTGCTCCCTTCAGGAC
 TCCTGGAGTCCAGGGCCTTGTGGGATTAAGAAAAATAAGGAGAGCCGCTCACCAAGGTGTCTCTGAA
 GATTGAAGAAAAGGAAATAGAGCATGCTCTGAACGGCAAAGCTTTCACCGGAACATCTCGCTGCTGTT
 CTGCCC

ACGCGTACGCGGCCGCTCGAG - GFP Tag - GTTTAA

Protein Sequence:

>MG208911 representing NM_001025779
 Red=Cloning site Green=Tags(s)

MPQTRSQTQATIGFPKKLSNTLKKPNSRDCEVKLRNVQVPVPTTPCVDVKLLPLSPKRKLGDDNLNTPR
 LSPCSPPKLGKKENGPPRSHTWKGCRLVFDDEPTFKASPPKEQDRVRQHQIRSSSAQRSPESKADPEQKC
 PPEKESVCIRLFKQEGTCYQQAQKLVNLTAVPDRLPAREQEMGVIRNFKHEHICGKKAGSLYLSGAPGTGK
 TACLSRIQLQDFKKEVKGFKSILLNCMSLRSAQAVFPAIAQEIGREELCRPAGKDLMRKLEKHLTAEKGPM
 IVLVLDQMDQLDSKQDVLVYTLFEWPWLSNSRLVLIIGIANTLDLTDRIPLRLEARENCKPQLLNFPYTR
 NQIAAILQDRLSQVSKDQVLDAAIQFCARKVSAVSGDIRKALDVCRAIEIVESDVRSQTVLKLSECK
 SPSESPVPKRVGLAHISQVISEVDGNRVTLSENTQDSLPLQKILVCSLLLLTRRLKIKEVTLGKLYEA
 YSSICRKQVAVDQSECLSLGLESRLVGLKKNKESRLTKVSLKIEEKEIEHVLNGKAFTGNILAAG
 LP

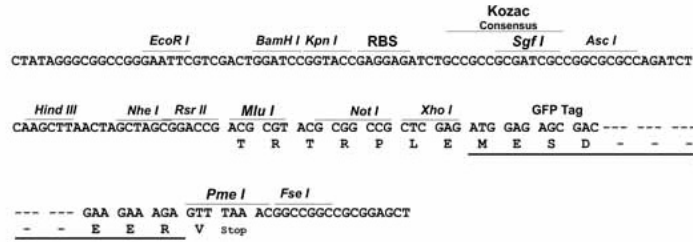
TRTRPLE - GFP Tag - V

Restriction Sites:

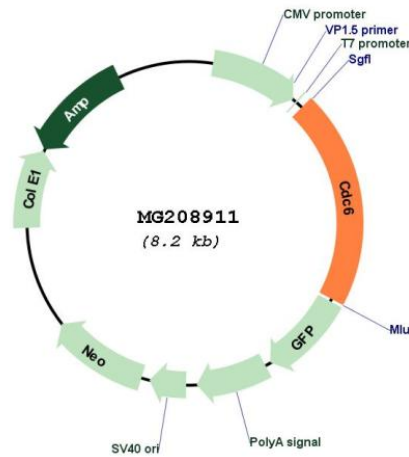
SgfI-MluI

Cloning Scheme:

Cloning sites used for ORF Shutting:



Plasmid Map:



ACCN: NM_001025779
 ORF Size: 1686 bp

OTI Disclaimer:	The molecular sequence of this clone aligns with the gene accession number as a point of reference only. However, individual transcript sequences of the same gene can differ through naturally occurring variations (e.g. polymorphisms), each with its own valid existence. This clone is substantially in agreement with the reference, but a complete review of all prevailing variants is recommended prior to use. More info
OTI Annotation:	This clone was engineered to express the complete ORF with an expression tag. Expression varies depending on the nature of the gene.
Components:	The ORF clone is ion-exchange column purified and shipped in a 2D barcoded Matrix tube containing 10ug of transfection-ready, dried plasmid DNA (reconstitute with 100 ul of water).
Reconstitution Method:	<ol style="list-style-type: none">1. Centrifuge at 5,000xg for 5min.2. Carefully open the tube and add 100ul of sterile water to dissolve the DNA.3. Close the tube and incubate for 10 minutes at room temperature.4. Briefly vortex the tube and then do a quick spin (less than 5000xg) to concentrate the liquid at the bottom.5. Store the suspended plasmid at -20°C. The DNA is stable for at least one year from date of shipping when stored at -20°C.
RefSeq:	NM_001025779.2
RefSeq Size:	4532 bp
RefSeq ORF:	1689 bp
Locus ID:	23834
UniProt ID:	O89033
Cytogenetics:	11 D
Gene Summary:	Involved in the initiation of DNA replication. Also participates in checkpoint controls that ensure DNA replication is completed before mitosis is initiated.[UniProtKB/Swiss-Prot Function]