

Product datasheet for **MG208910**

Sema5a (BC065137) Mouse Tagged ORF Clone

Product data:

Product Type:	Expression Plasmids
Product Name:	Sema5a (BC065137) Mouse Tagged ORF Clone
Tag:	TurboGFP
Symbol:	Sema5a
Synonyms:	5930434A13, semF
Mammalian Cell Selection:	Neomycin
Vector:	pCMV6-AC-GFP (PS100010)
E. coli Selection:	Ampicillin (100 ug/mL)



[View online »](#)

ORF Nucleotide Sequence:

>MG208910 representing BC065137
 Red=Cloning site Blue=ORF Green=Tags(s)

TTTTGTAATACGACTCACTATAGGGCGGCCGGAATTCGTCGACTGGATCCGGTACCGAGGAGATCTGCC
 GCC**CGGATCGCC**

ATGAAGGGAGCCTGCATCCTTGCATGGCTGTTCTCAAGCCTGGGAGTGTGGAGACTTGTAGGCCGAGA
 CCCAGGACCCTGCCAAGTGCCAGAGAGCTGAGCACCTGTCGCTCTTACAAAGAAATTGCCCCCTGGTT
 ACGGGAGTTCAGAGCCGAGAATGCTGTGGATTTCTCGAGGTTAACATTTGACCCAGGACAGAAAAGAACTT
 GTCGTAGGAGCGAGAAACTATCTCTTACAGATTAGAGCTTGAAGATCTGTCTCTCATCCAGGCTGTGGAGT
 GGGAGTGTGACGAAGCCACCAAGAAGGCCTGTTACAGCAAGGGCAAATCGAAGGAGGAATGTCAGAACTA
 CATACGAGTGTCTTAGTTGGTGGGACCGGCTATTCACCTGTGGGACCAATGCCTTCACACCTGTCTGT
 ACCATCCGCTCGTTAAGTAACCTGACTGAGATCCATGATCAGATCAGTGGCATGGCCCGTGTCCCTACA
 GTCCCCAGCACAATTCTACCGCCCTACTACTGCCAGTGGTGAAGTCTATGCTGCAACAGCCATGGATTT
 CCCAGGGCGAGATCCAGCCATTTACCGAAGTCTGGGCACCTTGCCTCCTCTTCGAACTGCACAGTACAAC
 TCCAAATGGCTCAATGAACCAAACCTTTGTGTCTTCTACGACATCGGAAATTTACCTACTTCTTCTTCC
 GAGAAAACGCGCTGGAACATGACTGTGGGAAGACGGTGTCTCCAGGGCTGCCCGGGTCTGTAAAAATGA
 CATTGGAGGGCGATTTCTTCTGGAGGACACCTGGACTACCTTCATGAAGGCTCGCCTCAACTGCTCCCGG
 CCTGGTGAAGTGCCCTTCTACTACAATGAGCTGCAGGGTACTTTCTTCTGCCGGAGCTGGATCTGATCT
 ATGGTATCTTACCACCAATGTAACAGCATCGCTGCCTCTGCTGTCTGTCTTCAACCTGAGCGCCAT
 CTCACAGGCCCTCAATGGACCCTTCAAGTACCAAGAAAACCTCTCGCTCAGCCTGGCTGCCTTATCCCAAC
 CCCAACCCCAATTTTTCAGTGGCGCACCATGGACCAGGGCCTGTACGTAACCTGACGGAAGAAACCTAC
 AGGATGCTCAGAAGTTCATTCTGATGCATGAAGTGGTGCAGCAGTGACCACAGTGCCTCTTTTCATGGA
 GGACAACAGCCGCTTCTCCCACTTAGCTGTTGATGTTGTGCAAGGCAGGGAGACTCTGGTCCACATCATT
 TATCTGGCCACAGATTATGGCACCATTAAGAAAGTACGAGCTCCCTGAGTCAGAGCTCAGGCAGCTGTT
 TGCTGGAAGAGATTGAGCTTTTCCAGAGAGGAGGAGTGAAGCCATCAGGAGCCTGCAGATCCTCCACAG
 CCAGAGTGTCTATTTGTGGGACTACAGGAGCATGTGGCCAAGATCCCCCTGAAGAGGTGCCACTTCCAT
 CAAACACGAGTGCCTGCATTGGCGCTCAGGACCCTTACTGTGGCTGGGATGCGGTGATGAAGAAATGCA
 CCAGCCTGGAGGAGTCTGAGCATGACCCAGTGGGATCAGAGCATCCCCACCTGTCCGACCAGAAATCT
 CACTGTAGATGGGAGCTTTGGCCATGGTCACCGTGGACACCCTGTACACACACTGATGGCATCTGGGCT
 GGTGTG

ACGCGTACGCGGGCCGCTCGAG - GFP Tag - GTTTAA

Protein Sequence:

>MG208910 representing BC065137
 Red=Cloning site Green=Tags(s)

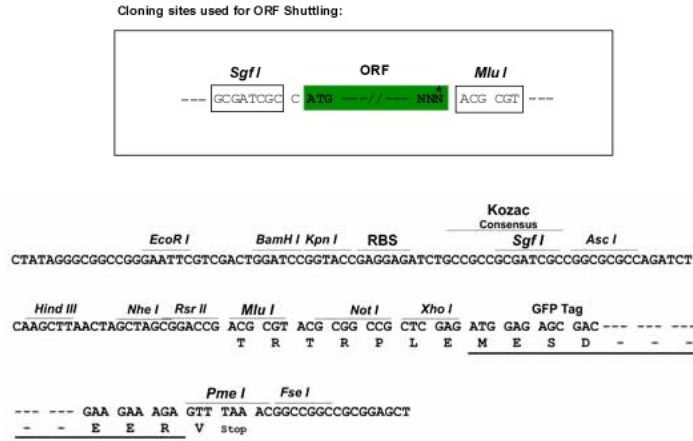
MKGACILAWLFSSLGVWRLARPETQDPKACQRAEHPVVSYKEIGPWLREFRAENAVDFSRLTFDPGQKEL
 VVGARNYLFRLLEDLSLIQAVEWECDEATKACYSKSKSKEECQNYIRVLLVGGDRLFTCGTNAFTPV
 TIRLSNLTEIHDQISGMARCPYSPQHNSALLTASGELYAATAMDFPGRDPAIYRSLGLPLRRTAQYN
 SKWLNPNFVSSYDIGNFTYFFRENAVEHDCGKTVFSRAARVCKNDIGGRFLLEDWTTFMKARLNCSR
 PGEVPPFYNELQGTFFLPELDLIYGIFTTNVNSIAASAVCVFNLSAISQAFNGPFKYQENSRSAWLPYPN
 PNPNFQCGTMDQGLYVNLTERNLQDAQKFILMHEVVQPVTVPVPSFMEDNSRFSHLAVDQVQGRETLVHII
 YLATDYGTIKKVRAPLSQSSGSCLEELIEIFPERRSEPIRSLQILHSQSVLFVGLQEHVAKIPLKRCHF
 QTRSACIGAQDPYCGWDAVMKKCTSLEESLSMTQWQSIPTCPTRNLTVDGSGFPWSPWTPCTHTDGIWA
 GV

TRTRPLE - GFP Tag - V

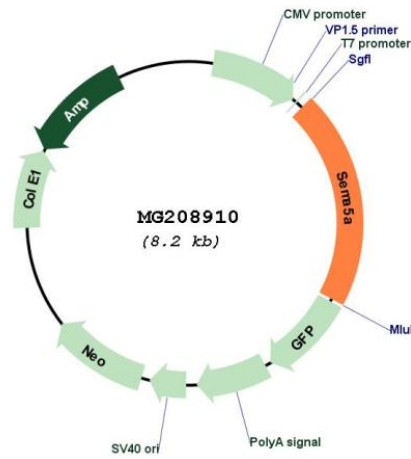
Restriction Sites:

Sgfl-MluI

Cloning Scheme:



Plasmid Map:



ACCN: BC065137
 ORF Size: 1688 bp

OTI Disclaimer:	The molecular sequence of this clone aligns with the gene accession number as a point of reference only. However, individual transcript sequences of the same gene can differ through naturally occurring variations (e.g. polymorphisms), each with its own valid existence. This clone is substantially in agreement with the reference, but a complete review of all prevailing variants is recommended prior to use. More info
OTI Annotation:	This clone was engineered to express the complete ORF with an expression tag. Expression varies depending on the nature of the gene.
Components:	The ORF clone is ion-exchange column purified and shipped in a 2D barcoded Matrix tube containing 10ug of transfection-ready, dried plasmid DNA (reconstitute with 100 ul of water).
Reconstitution Method:	<ol style="list-style-type: none"> 1. Centrifuge at 5,000xg for 5min. 2. Carefully open the tube and add 100ul of sterile water to dissolve the DNA. 3. Close the tube and incubate for 10 minutes at room temperature. 4. Briefly vortex the tube and then do a quick spin (less than 5000xg) to concentrate the liquid at the bottom. 5. Store the suspended plasmid at -20°C. The DNA is stable for at least one year from date of shipping when stored at -20°C.
RefSeq:	BC065137 , AAH65137
RefSeq Size:	4259 bp
RefSeq ORF:	1688 bp
Locus ID:	20356
Cytogenetics:	15 13.02 cM