

Product datasheet for **MG208908**

Aff3 (BC052061) Mouse Tagged ORF Clone

Product data:

Product Type:	Expression Plasmids
Product Name:	Aff3 (BC052061) Mouse Tagged ORF Clone
Tag:	TurboGFP
Symbol:	Aff3
Synonyms:	3222402O04Rik; A730046J16; LAF-4; Laf4
Mammalian Cell Selection:	Neomycin
Vector:	pCMV6-AC-GFP (PS100010)
E. coli Selection:	Ampicillin (100 ug/mL)



[View online »](#)

ORF Nucleotide Sequence:

>MG208908 representing BC052061
 Red=Cloning site Blue=ORF Green=Tags(s)

TTTTGTAATACGACTCACTATAGGGCGGCCGGAATTCGTCGACTGGATCCGGTACCGAGGAGATCTGCC
 GCC**GCGATCGCC**

ATGGACAGCTTCGACTTAGCCCTGCTCCAGGAATGGACCTCGAGTCGCTGTGGGTGAAGATATCCTAA
 GCCAGAGGAATGATTCTCTAGTTCTGGAAGTTCAGGCATCAGCCAGCAGATGCAGGAGTGTCTATGAACC
 GGACAGGAATGCGTTACGGAGGAAAGAGCGAGAAAGAAGTCAAGAAACACAGCAGGACAGTGGCAGC
 TTTAACTCCGTTACTCGCTCTTCAGCGAACCTACAAGACGAACAAGGGGGATGAACTCTCCAACCGGA
 TCCAGAATACATTAGGAAATATGATGAGATGAAAGACTTTTTAACTGATAGATCCAACAGAGTATCT
 TGTTGGCGTCCCCAAGCCAGGTGTCCCTCAGACTCCCCTGAACAAGATAGATGAGCATTTTGGGCGAG
 TCGAGAGCCAGCCAGCCCTCAACCGTCTGCAGCACTGCGTCTCTACACCTGCAGTGTCCCTGTGC
 AGCAGGGCAAGAGAGGTGCCATGGGCTGGCAGAAGGCTGGCACCCACCGTCCGATGGCCACAGAGAGC
 AGCGCAACAGGGCTCTCTCAGGACCTTGTGGAGATGGTGTGGCAGACAGCAGACAAGGGCCAAGCAA
 GTGTGCAATATGGAGACGGGCTTCAGACCCAGGAGAGGCCACCTGCAATGGCAGCCAAGCACGGCGGCA
 GTGGACACTGTGTTCAGAACTTTCCCCATCCCTGGCTTCAAAACCCAGCCTGGTGCAGCAGAAACCAAC
 TGCTACGTGCGGCAATGGATGGCCAGGACCAAGCTCCTGACGAATCTCCTAAGCTGAAGTATCCACA
 GAAACTGCTGTGACTGCACAGCCTACAGAGGGTCCCAGCAACAAACAGAGTCAAGCCGAGCCAAAGG
 CCAAGCTTGCCAAAGTTCAGCATCCCCAAGCAGGAGGAGAGTATGATCTGGAGAAAACAACAGCTGTGT
 GGAAGAAATAATCGGGAGATGACCTGGCTTCTCCACTTTCTGCTATTCAAGCTCCTGCCAAAGTGAA
 CCAAGCAAGTCCCATTCCAAAATAAGGACTCGCAACTGTATCCTCTGGACACAGTAATCCAAAGAAAG
 CTGATGCGGAGCCAGGGAGTCCAGACAATGGCGCATCGAACACTTCAACTCTGGAAGACGACCTTAAGCT
 AAGCAGTGATGACGAAGAGGGTGGCAGGAGCCAGAGAACAGCTCTCCGCGCTCTAGCTGACAGCTCC
 GTGGTTCAGCAGACCAACTGTAGAGGTTGCGCGCCATCCAGCAAGGGCGGCGCAGCAGCAGCAGCAGC
 GCGGCAGCAGCTCCTCCAGCAGTCCAGAGCACTTCCGGCTCCGACTCCGAGACGGAGAGCAGCTCCAG
 CTCCAGCAGAGCAGGGCAGCAAGCCTCCGCACTGCTCCAGCCCGAGGCGCAACTGCGTCTCTAAC
 AAGTGGCAGCTGGATAAATGGCTAAACAAGTTAATCCTCACAAGCCGCAATTCTGATCCAAAATGAAA
 GCCACGGCCCGAAAGGAATCAATACTACACGCCCGGTTGAAAGATGAAGGGCAAGACTGCGGGAACT
 TCCTGAGATCTGCAAGCCAGCCTGAGGGACAAGGAGCTCAAGACCACCTGCAAGGAGGAGCAGAGGCC
 AGGACC

ACGCGTACGCGGCCGCTCGAG - GFP Tag - GTTTAA

Protein Sequence:

>MG208908 representing BC052061
 Red=Cloning site Green=Tags(s)

MDSFDLALLQEWDLLESLWGEDILSQRNDSLVLVLEVQASASRCRSVYEPDRNALRRKERERRSQETQQDSGS
 FNSGYSLFSPEYKTNKGDEL SNRIQNTLGNDEMDFL TDRSNQSHLVGVKPGVPTPVNKIDEHFGAE
 SRAQPQPSTVCSTASSTPAAPVQVQKRGAMGWQKAGHPPSDGQQRAAQQGSLRLLGDGVGRQQTRAKQ
 VCNMETGLQTQERPPAMAANKHGSGHCVQNFPPSLASKPSLVQKPTAYVRPMDGQDQAPDESPKLSST
 ETAVHCTAYRGPANKPESARAKAKLAKFSIPKQAEESRSGENNSCVEEIIREMTWLPPLSAIQAPAKVE
 PSKFPPFNKDSQLVSSGHSNPKKADAEPGSPDNGASNTSTLEDDLKLSDDDEEGEQAAQRTALRALADSS
 VVQQTNCRGSAPSCKGGSSSSSSGSSSSSDSESTSGSDSETSSSSSESESGSKPPHCSSPEAEPASSN
 KWQLDKWLNKVNPHKPPILIQNESHGPERNQYYTPPVKDEGQDCGKLEICQASLRDKELKTTCKEEQRP
 RT

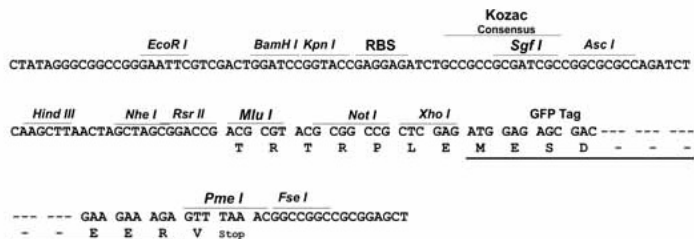
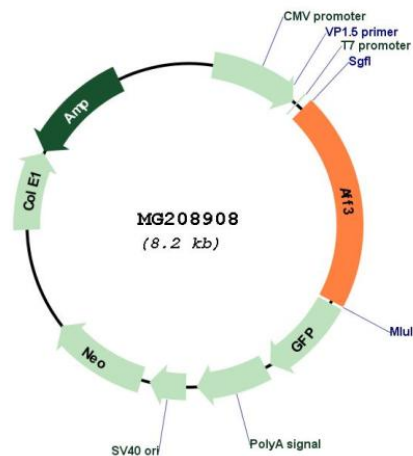
TRTRPLE - GFP Tag - V

Restriction Sites:

Sgfl-Mlul

Cloning Scheme:

Cloning sites used for ORF Shutting:


Plasmid Map:


ACCN: BC052061
ORF Size: 1688 bp

OTI Disclaimer:	<p>Due to the inherent nature of this plasmid, standard methods to replicate additional amounts of DNA in E. coli are highly likely to result in mutations and/or rearrangements. Therefore, OriGene does not guarantee the capability to replicate this plasmid DNA. Additional amounts of DNA can be purchased from OriGene with batch-specific, full-sequence verification at a reduced cost. Please contact our customer care team at custsupport@origene.com or by calling 301.340.3188 option 3 for pricing and delivery.</p> <p>The molecular sequence of this clone aligns with the gene accession number as a point of reference only. However, individual transcript sequences of the same gene can differ through naturally occurring variations (e.g. polymorphisms), each with its own valid existence. This clone is substantially in agreement with the reference, but a complete review of all prevailing variants is recommended prior to use. More info</p>
OTI Annotation:	This clone was engineered to express the complete ORF with an expression tag. Expression varies depending on the nature of the gene.
Components:	The ORF clone is ion-exchange column purified and shipped in a 2D barcoded Matrix tube containing 10ug of transfection-ready, dried plasmid DNA (reconstitute with 100 ul of water).
Reconstitution Method:	<ol style="list-style-type: none"> 1. Centrifuge at 5,000xg for 5min. 2. Carefully open the tube and add 100ul of sterile water to dissolve the DNA. 3. Close the tube and incubate for 10 minutes at room temperature. 4. Briefly vortex the tube and then do a quick spin (less than 5000xg) to concentrate the liquid at the bottom. 5. Store the suspended plasmid at -20°C. The DNA is stable for at least one year from date of shipping when stored at -20°C.
RefSeq:	BC052061
RefSeq Size:	3347 bp
RefSeq ORF:	1688 bp
Locus ID:	16764
Cytogenetics:	1 16.58 cM