

Product datasheet for **MG208901**

Thpp1 (NM_009906) Mouse Tagged ORF Clone

Product data:

Product Type:	Expression Plasmids
Product Name:	Thpp1 (NM_009906) Mouse Tagged ORF Clone
Tag:	TurboGFP
Symbol:	Thpp1
Synonyms:	Cl; Cln2; LPIC; TPP-1; TPP-I
Mammalian Cell Selection:	Neomycin
Vector:	pCMV6-AC-GFP (PS100010)
E. coli Selection:	Ampicillin (100 ug/mL)



[View online »](#)

ORF Nucleotide Sequence:

>MG208901 representing NM_009906
 Red=Cloning site Blue=ORF Green=Tags(s)

TTTTGTAATACGACTCACTATAGGGCGGCCGGAATTCGTCGACTGGATCCGGTACCGAGGAGATCTGCC
 GCC**CGGATCGCC**

ATGGGACTCCAAGCCCGCTCTAGGGCTCCTGTCTCTGTCATCGCCGGCAAATGCACTTACAACCTG
 AGCCGGACCAGCGGTGGATGCTGCCTCCAGGCTGGGTGCCCTGGCCGGGTGGATCCCGAGGAAGAGCT
 GAGTCTCACTTTTGGCGTGAACAGCGGAACCTGGAAAGACTCTCGGAGCTGGTGCAGGCTGTGTGGAT
 CCTAGCTCTCCTCAATATGAAAAGTACCTAACCTGGAGGATGTAGCTGAGCTGGTTCAACCATCACCC
 TGACCCTCCTCACTGTCCAAAAGTGGCTCTCAGCAGCTGGAGCCCGAACTGCGATTCACTGACCACCA
 GGACTTTCTGACTTGGCTGAGTGTCCGACAGGCTGAGCTGCTGCTCCAGGAGCTGAGTTTCATCGC
 TATGTAGGGGGACCTACAAAGACCCATGTTATAAGGTCCACACATCCCTACCAGCTTCCCAGGCCCTGG
 CCCCTCATGTGGATTTTGGGGGGGCTGCACCGTTTCCCCCTTCATCTCCAAGACAACGTCCAGAACC
 ACAACAGGTAGGAACTGTTAGCTGCACCTGGGAGTACTCCGTCTGTGCTCCGTGAGCGATACAACCTG
 ACAGCCAAAGATGTGGGCTCAGGCACCACCAACAATAGCCAGGCCGTGCCCCAGTTCTGGAAACAGTACT
 TCCATAACTCGGATCTGACTGAGTTCATGCGCCTATTCGGTGGCAGTTTTACACACCAGGCCCTCAGTAGC
 AAAAGTTGTTGGAAAGCAAGGGCGAGGCCGAGCTGGGATCGAGGCCAGTCTAGATGTGGAATACCTGATG
 AGTGTGGTGCCAATATCTCCACTTGGGTCTACAGTAGCCCTGGCCGATGAGGCACAGGAGCCCTTCT
 TACAATGGCTCCTGCTTCTTAGCAATGAGTCATCTTGGCACATGTACATACTGTGAGTTACGGAGACGA
 TGAAGACTCCCTCAGCAGCATCTACATCCAGAGAGTCAACTGAGTTCATGAAGGCTGTGCTCGGGGT
 CTCACCTCCTTTTGCCTCAGGTGACACTGGAGCTGGGTGTTGGTCTGTCTCCGGAAGACACAAGTTCC
 GCCCTAGCTTCCCTGCTCCAGCCCTATGTTACTACAGTTGGAGGAACCTCCTCAAGAATCCTTCTCT
 CATCACAGATGAAGTAGTTGACTATATCAGTGGTGGAGGCTTCAGCAATGTTTTCCACGGCCTCCCTAC
 CAGGAGGAAGCAGTGGCCAGTCTTGAATCCAGCTCTCATCTACCACCATCCAGTTACTTCAATGCTA
 GTGGCCGTGCCTACCCAGATGTTGCCGCACTATCTGATGGCTACTGGTGGTGCAGCAACATGGTCCCAT
 TCCATGGGTACTGGAACCTCGGCCTCTACTCCAGTGTGGGGGAATTTATCCTTGATAAATGAGCAC
 AGAATCCTCAATGGCCGCCCTCCTTGGCTTTCTCAACCCAGGCTCTATCAGCAGCATGGGACAGGAC
 TCTTTGATGTAACCCACGGCTGCCATGAGTCTGTCTGAATGAAGAAGTGGAGGGTCAAGGTTTCTGCTC
 TGGTCTGGTGGGATCCTGTGACAGTTGGGGAACCCAACTCCCAGCCCTACTGAAGACCCTGCTC
 AACCT

ACGCGTACGCGGCCGCTCGAG - GFP Tag - GTTTAA

Protein Sequence:

>MG208901 representing NM_009906
 Red=Cloning site Green=Tags(s)

MGLQARLLGLLALVIAGKCTYNPEPDQRWMLPPGWVSLGRVDPEEELSLTFALKQRNLERLSELVQAVSD
 PSSPQYGYLTLLEDVAELVQPSPLTLLTVQKWLAAAGARNCDVTTQDFLTCWLSVRQAELLLPGAEFHR
 YVGGPTKTHVIRSPHYQLPQALAPHVDFVGGHRFPSSPRQRPEPQQVGTVSLHLGVTPSVLRQRYNL
 TAKDVGSGTTNNSQACAQFLEQYFHNSDLTEFMRLFSGSFTHQASVAKVVGKQGRGRAGIEASLDVEYLM
 SAGANISTWYSSPRHEAQEPFLQWLLLLSNESSLPHVHTVSYGDEDSLSSIIYIQRVNTEFMKAAARG
 LTLFASGDTGAGCWSVSGRHKFRPSFPASSPYVTTVGGTSFKNPFLITDEVVDYISGGGFSNVFPRPPY
 QEEAVAQFLKSSSHLPPSSYFNASGRAYPDVAALSDGYWVSNMVPPIPWVSGTSASTPVFGGILSLINEH
 RILNRPPLGFLNPRLYQQHGTGLFDVTHGCHESCLNEEVEGQGFCSGPGWDPVTGWGTPNFPALLKTL
 NP

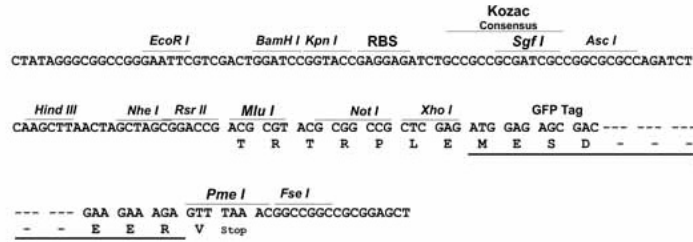
TRTRPLE - GFP Tag - V

Restriction Sites:

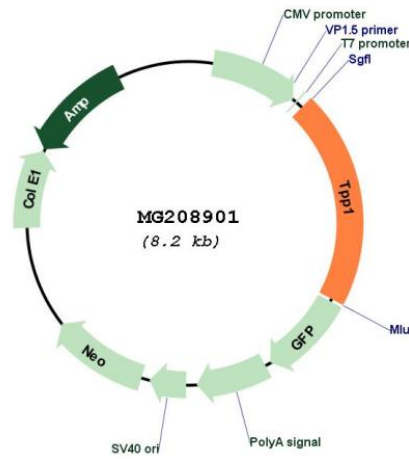
Sgfl-Mlul

Cloning Scheme:

Cloning sites used for ORF Shutting:



Plasmid Map:



ACCN: NM_009906
 ORF Size: 1686 bp

OTI Disclaimer:	The molecular sequence of this clone aligns with the gene accession number as a point of reference only. However, individual transcript sequences of the same gene can differ through naturally occurring variations (e.g. polymorphisms), each with its own valid existence. This clone is substantially in agreement with the reference, but a complete review of all prevailing variants is recommended prior to use. More info
OTI Annotation:	This clone was engineered to express the complete ORF with an expression tag. Expression varies depending on the nature of the gene.
Components:	The ORF clone is ion-exchange column purified and shipped in a 2D barcoded Matrix tube containing 10ug of transfection-ready, dried plasmid DNA (reconstitute with 100 ul of water).
Reconstitution Method:	<ol style="list-style-type: none">1. Centrifuge at 5,000xg for 5min.2. Carefully open the tube and add 100ul of sterile water to dissolve the DNA.3. Close the tube and incubate for 10 minutes at room temperature.4. Briefly vortex the tube and then do a quick spin (less than 5000xg) to concentrate the liquid at the bottom.5. Store the suspended plasmid at -20°C. The DNA is stable for at least one year from date of shipping when stored at -20°C.
RefSeq:	NM_009906.6
RefSeq Size:	3494 bp
RefSeq ORF:	1689 bp
Locus ID:	12751
UniProt ID:	O89023
Cytogenetics:	7 55.97 cM
Gene Summary:	This gene encodes a lysosomal serine protease that cleaves N-terminal tripeptides from protein substrates. The encoded preproprotein undergoes autocatalytic processing to generate a mature enzyme. Mice lacking the encoded protein exhibit a progressive neurodegeneration and a greatly shortened lifespan. At the cellular level, mice lacking the encoded protein exhibit accumulation of autofluorescent lipopigments. Mutations in the human ortholog of this gene cause classical late-infantile neuronal ceroid lipofuscinosis. [provided by RefSeq, Nov 2015]