

## Product datasheet for **MG208899**

### Fam222b (NM\_145430) Mouse Tagged ORF Clone

#### Product data:

Product Type:	Expression Plasmids
Product Name:	Fam222b (NM_145430) Mouse Tagged ORF Clone
Tag:	TurboGFP
Symbol:	Fam222b
Synonyms:	9630020I17Rik
Mammalian Cell Selection:	Neomycin
Vector:	pCMV6-AC-GFP (PS100010)
E. coli Selection:	Ampicillin (100 ug/mL)



[View online »](#)

**ORF Nucleotide Sequence:**

>MG208899 representing NM\_145430  
 Red=Cloning site Blue=ORF Green=Tags(s)

TTTTGTAATACGACTCACTATAGGGCGGCCGGAATTCGTCGACTGGATCCGGTACCGAGGAGATCTGCC  
 GCC**CGGATCGCC**

ATGCTAGCCTGTCTCCAGGACCAGGTGACCTGTCCCTCAGCTTCTTTCTCACACGCAGATGAACACTG  
 GACTTCAGAAATGGGACACTACACAGAAAATGAGAACTGCTCACTATCCCACCCAGCCGAATTGGACGC  
 GTATGCTAAGAAGGTCGCAAACAACCCACTGACTATAAAAATCTTCCCAACAGTGTGAAGTTCCCCAG  
 CGGAAACACGTTCTGTCGTAAGTGTGAACGGCCTCGACACATCAGCCAGCGCTACAGCCCCTACCCGACTC  
 AGGCCGCCACCAAGGCAGGCCTGCTTGCCATTGTCAAAGTGCCAGCCAAAAGCATACTCAAGGACTTTGA  
 CGGCACCCGAGCTCGGTTCTCCCTGAGGCCATCATGAACCCCCAGTGGCACCCCTATGCTACTGTGGCA  
 CCCAGCACTTTAGCCACCCACAGGCCAGGCTCTGGCCCGCCAGCAGGCTCTGCAGCATGCACAGACCC  
 TGGCCCATGCCCTCCCCAGACACTGCAACACCCTCAGGGTATACCACCACACAGGCACGTCTCACCC  
 TCAGAGCCTCCAGCAGCCTCAGGCCTGGGCCACCCTCAGCAGATGGCCCAAACCCAGGGCTTGGTCCAC  
 CCTCAGGCCCTGACTCATCAGGGTCTCCAGCACCCCTAATCCCTTGCTGCATGGAGGCCGGAAGATGC  
 CAGACTCAGATGCACCCCGAATGTGACCGTGTCTACCTCAACTATCCCCCTTCAATGGCGGCCACCCCT  
 GCAACACAGCCAGCCCCGGACCTGAGCAGCATTGTGCACCAGATCAACCAGTTTTGCCAGACGAGGGCA  
 GGCATCAGCACTACCTCAGTGTGTGAGGGCCAGATCGCCAACCCAGCCCTATTAGTCGCAGTCTGCTCA  
 TCAATGCAAGCACCCGGGTGTCGACCCACAGCGTCCCCACACCAATGCCTTCATGTGTGGTCAATCCCAT  
 GGAGCACACCCACGCGGCCACAGCCGACTGCCTGCTGCAGGTCTGTCAACCTGCCACAGGCATCTCT  
 CGAGCCCCCACTGGTACCCTAGCGACCTCAAGCCAGTTACCTGGAACCAGCACCAGCTGGCTCACCTAC  
 AACAGATGTGCAGCGAGCCGGTGGGACGCCACCCTGGCCTGACAGGCAAAACATACAGCAGGAGCTGA  
 GTTGGCAGGGCCTGGTTTTGTGGGCAAGGCCGCTGCCTACCCACAGGAACCTCTGCCTGGCACAGTCCCTC  
 CATCTGAAGCACCCCTGGAGAAGCCGACCCCATCCCCACCGGTCAACGGCTACCAGCCCCACTGGCCT  
 ACCCGAATGGCCACTACTTCCAACCCCTGTGGAACAACATTCTACCAACTCCCAATAGCGACAGCTCGGG  
 GTCTCAAGACCTAACCATGCCATTCCATGGTGGGACGCCACGGGTGCACCCCTCGACTGTGGGCGAGCT  
 CCTGGGGCCCACTACCGAGCAGGGACTGGGGTGGTCCAGTGGCAAGCCAGAACAGCTTGATGCAAACGG  
 TGGATTACCTGAGTGGGATTTCCAGCAGGCCTGCTTCCGAGAACAGAGCCTGGCCATGTTGAGCAAAGC  
 CCACCGAGCTCCTGGCACCCGAGCCCTGATCCCACAGATAGTCGAAGTCTTCATATTACGACCCAGGG  
 TATAGA

AG**CGGACCG**ACGCGTACGCGGCCGCTCGAG - GFP Tag - GTTTAA

**Protein Sequence:**

>MG208899 representing NM\_145430  
 Red=Cloning site Green=Tags(s)

MLACLPGPGDLSLQLLSHTQMNTGLQKWDTTQKMRTAHYPTPAELDAYAKKVANNPLTIKIFPNSVKVPQ  
 RKHVRRTVNGLDTSQRYSPYPTQAATKAGLLAIVKVPKAKSILKDFDGTARFLPEAIMNPPVAPYATVA  
 PSTLAHPQAQALARQALQHAQTLAHAPPQTLQHPQGIPPPQALSHPSLQPPQLGHPQQAQTQGLVH  
 PQALTHQGLQHPPNLLHGGRKMPDSDAPPNVTVSTSTIPLSMAATLQHSQPPDLSSIVHQINQFCQTRA  
 GISTTSVCEGQIANPSPISRLLINASTRVSTHSVPTPMPSCVVPMEHTHAATAALPAAGPVNLP TGIS  
 RAPTGYPDLKPVTWNQHLAHLQQMCSEAGGTPAPGLTGKHTAGRELAGPFGVGAAYPQELCLAQSF  
 HLKPPLEKPTSPPVNGLPAPLAYPNGHYFQPLWNNILPTPNSDSSGSQDLTMPFHGGQPTGAPLDCGAA  
 PGAHYRAGTGGGPVASQNSLMQTVDYLSGDFQQACFREQLAMLKAHRAPGTRAPDPTDSRSLHIQHPG  
 YR

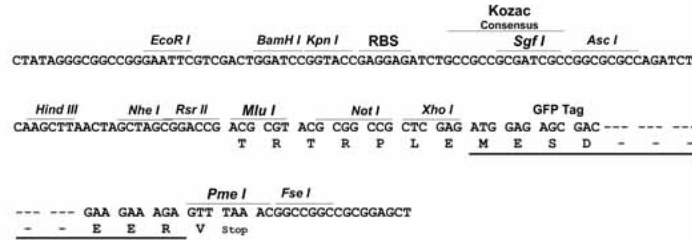
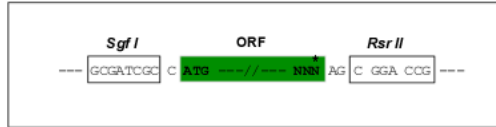
SGP**TRRRLE** - GFP Tag - V

**Restriction Sites:**

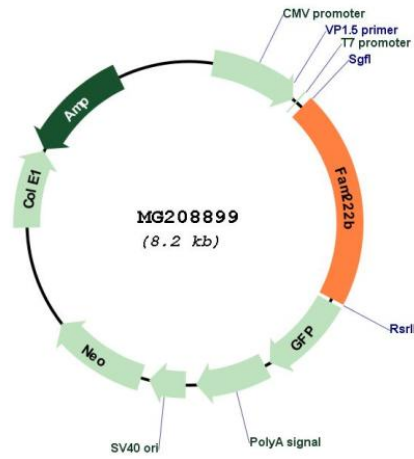
SgfI-RsrII

Cloning Scheme:

Cloning sites used for ORF Shuttling:



Plasmid Map:



ACCN: NM\_145430  
 ORF Size: 1686 bp

<b>OTI Disclaimer:</b>	The molecular sequence of this clone aligns with the gene accession number as a point of reference only. However, individual transcript sequences of the same gene can differ through naturally occurring variations (e.g. polymorphisms), each with its own valid existence. This clone is substantially in agreement with the reference, but a complete review of all prevailing variants is recommended prior to use. <a href="#">More info</a>
<b>OTI Annotation:</b>	This clone was engineered to express the complete ORF with an expression tag. Expression varies depending on the nature of the gene.
<b>Components:</b>	The ORF clone is ion-exchange column purified and shipped in a 2D barcoded Matrix tube containing 10ug of transfection-ready, dried plasmid DNA (reconstitute with 100 ul of water).
<b>Reconstitution Method:</b>	<ol style="list-style-type: none"><li>1. Centrifuge at 5,000xg for 5min.</li><li>2. Carefully open the tube and add 100ul of sterile water to dissolve the DNA.</li><li>3. Close the tube and incubate for 10 minutes at room temperature.</li><li>4. Briefly vortex the tube and then do a quick spin (less than 5000xg) to concentrate the liquid at the bottom.</li><li>5. Store the suspended plasmid at -20°C. The DNA is stable for at least one year from date of shipping when stored at -20°C.</li></ol>
<b>RefSeq:</b>	<a href="#">NM_145430.3</a>
<b>RefSeq Size:</b>	2846 bp
<b>RefSeq ORF:</b>	1689 bp
<b>Locus ID:</b>	216971
<b>UniProt ID:</b>	<a href="#">Q6P539</a>
<b>Cytogenetics:</b>	11 B5