

## Product datasheet for **MG208877**

### Sptlc2 (NM\_011479) Mouse Tagged ORF Clone

#### Product data:

Product Type:	Expression Plasmids
Product Name:	Sptlc2 (NM_011479) Mouse Tagged ORF Clone
Tag:	TurboGFP
Symbol:	Sptlc2
Synonyms:	LCB; LCB2; LCB2a; Sp; Spt2
Mammalian Cell Selection:	Neomycin
Vector:	pCMV6-AC-GFP (PS100010)
E. coli Selection:	Ampicillin (100 ug/mL)



[View online »](#)

**ORF Nucleotide Sequence:**

>MG208877 representing NM\_011479  
 Red=Cloning site Blue=ORF Green=Tags(s)

TTTTGTAATACGACTCACTATAGGGCGGCCGGAATTCGTCGACTGGATCCGGTACCGAGGAGATCTGCC  
 GCC**CGCATCGCC**

ATGCGCCCGAGCCCGGAGGCTGCTGCTGCCGCCCGCCGATGCGGGCGAACGGCTGCGTCAAGAACGGGG  
 AAGTGAGGAACGGTACTTTGAGGAGCAGCACCCACCCTCGCGCTGCCGGCCAGATTCATCATGTAAC  
 AGAAAATGGAGGACTGTACAAAAGACCGTTTAATGAAGCTTTTGAAGAAACACCCATGCTGGTTGCTGTG  
 CTCACATATGTGGGCTATGGCGTACTCACCTCTTTGGATATCTTCGAGATTTCTTGAGGCATTGGAGAA  
 TTGAAAAGTGCCACCATGCAACAGAAAGAGAAGAAACAAAAGGACTTTGTGTCCTTGATCAGGATTTTGA  
 AAATTCTATAACAAGGAACCTCTACATGAGAATCAGAGACAACCTGGAATCGACCTATCTGTAGTGTGCC  
 GGAGCCAAGGTGGATATCATGGAGAGAAAATCTCATGACTATAACTGGTCATTCAAGTACACAGGGAATA  
 TAATTAAGGTGTAATAAACATGGGTTCTACAACATCTTGGATTTGCGAGGAACACTGGATCATGTCA  
 GGAAGCAGCTGCTGAAGTCTCAAGGAGTATGGAGCAGGGGTGTCAGCAGCTCGTCAGGAAATTGGAAC  
 CTGGACAAGCATGAAGAACTAGAGAAAATGGTAGCAAGGTTCTTAGGTGTGGAAGCTGCTATGACCTATG  
 GCATGGGATTTGCAACAAATTAATGAACATTCCTGCTCTTGTGGCAAAGGTTGCCGATTCTGAGTGA  
 TGAGCTGAACCATGCGTCACTGGTTCTAGGAGCCAGACTGTCAGGAGCAACCATTCGAATCTTCAAACAC  
 AACAATATGCAAAGCTTAGAGAAGCTTTTAAAAGATGCCATTGTTATGGTCAGCCTCGGACAAGAAGAC  
 CCTGGAAGAAAATCTTAATCCTTGTGGAAGGCATATATAGTATGGAGGGGTCTATTGTTCCGCTTCTCTGA  
 AGTGATTGCTCTCAAGAAGAAAACAAGGCATACTTGTATCTGGATGAGGCTCACAGCATTGGGGCTCTT  
 GGCCCTTCAGGGCGAGGCGTGGTAGATTACTTTGGCCTGGATCCTGAGGATGTAGATGTTATGATGGGAA  
 CATTACAAAAGAGCTTCGGTCTTCAGGAGGATACATCGGAGGCAAGAAGGAGCTGATAGACTACCTGCG  
 CACACATTCACAGTGTGTATGCCACGTCGATGTACCCGCTGTGATGGAACAGATTATCACCTCC  
 ATGAAGTGCATCATGGGGCAGGATGGCACCAGTCTTGGCAAAGAATGTATACAGCAGTTGGCTGAGAACA  
 CCAGGTATTTAGGAGACGCCTGAAGGAAATGGGGTTCATCATCTATGGCAATGAAGACTCCCGGTGGT  
 GCCTTTGATGCTCTACATGCCGGCCAAAATGGCGCCTTTGGAAGAGAGATGCTGAAGCGGAACATTGGT  
 GTAGTTGTGGTGGGATTTCTGCTACCCCGATCATTGAGTCCAGAGCCAGATTTTGCCTGTCAGCAGCTC  
 ATACCAAAGAAATACTTGACTGCTTTGAAGGAGATAGATGAAGTTGGGGATCTGCTGCAGCTAAAGTA  
 CTCTCGCCACCGCTGGTGCCTCTACTGGACAGGCCCTTTGATGAGACTACCTATGAAGAGACAGAAGAC

**ACGCGTACGCGGCCGCTCGAG** - GFP Tag - GTTTAA

**Protein Sequence:**

>MG208877 representing NM\_011479  
 Red=Cloning site Green=Tags(s)

MRPEPGGCCRRPMPRANGCVKNGEVRNGYLRSSATVAAAGQIHHVTENGLYKRPFNEAFEETPMLVAV  
 LTYVGYGVLTFLFGYLRDFLRHWRIEKCHATEREEQKDFVSLYQDFENFYTRNL YMRIRDNWNRPICSV  
 GAKVDIMERKSHDYNWSFKYTGNIKGVINMGSYNYLGFARNTGSCQEAEEVLKEYGAGVCSTRQEI  
 LDKHEELEKLVARFLGVEAAMTYGMGFATNSMNPALVGKGLILSDELNHASLVLGARLSGATIRIFKH  
 NNMQSLEKLLKDAIVYQPRTRRPWKKILILVEGIYSMEGSIVRLPEVIALKKYKAYLYLDEAHSIGAL  
 GPSGRGVVDYFGLDPEDVDVMMGTFTKSFASGGYIGGKELIDYLRTHSHSAVYATSMSPVMEQIITS  
 MKCIMGQDGTSLGKECIQQLAENTRYFRRLKEMGFIIYGNEDSPVPLMLYMPAKIGAFGREMLKRNIG  
 VVVVGFPAPIIESRARFCLSAHTKEILDALKEIDEVGDLLQLKYSRHRVPLLDPRPFDETTYEETD

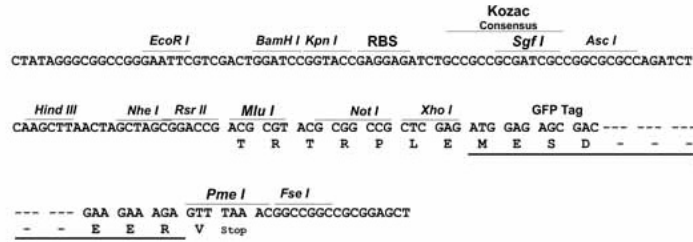
**TRTRPLE** - GFP Tag - V

**Restriction Sites:**

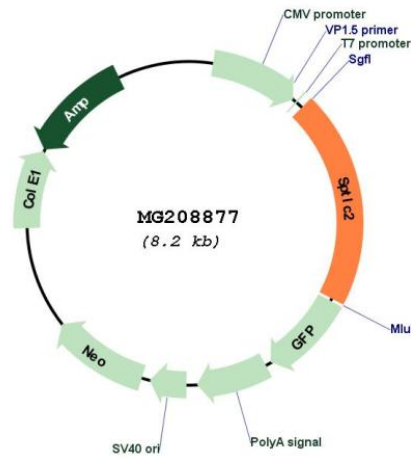
Sgfl-MluI

Cloning Scheme:

Cloning sites used for ORF Shutting:



Plasmid Map:



<b>ACCN:</b>	NM_011479
<b>ORF Size:</b>	1680 bp
<b>OTI Disclaimer:</b>	The molecular sequence of this clone aligns with the gene accession number as a point of reference only. However, individual transcript sequences of the same gene can differ through naturally occurring variations (e.g. polymorphisms), each with its own valid existence. This clone is substantially in agreement with the reference, but a complete review of all prevailing variants is recommended prior to use. <a href="#">More info</a>
<b>OTI Annotation:</b>	This clone was engineered to express the complete ORF with an expression tag. Expression varies depending on the nature of the gene.
<b>Components:</b>	The ORF clone is ion-exchange column purified and shipped in a 2D barcoded Matrix tube containing 10ug of transfection-ready, dried plasmid DNA (reconstitute with 100 ul of water).
<b>Reconstitution Method:</b>	<ol style="list-style-type: none"><li>1. Centrifuge at 5,000xg for 5min.</li><li>2. Carefully open the tube and add 100ul of sterile water to dissolve the DNA.</li><li>3. Close the tube and incubate for 10 minutes at room temperature.</li><li>4. Briefly vortex the tube and then do a quick spin (less than 5000xg) to concentrate the liquid at the bottom.</li><li>5. Store the suspended plasmid at -20°C. The DNA is stable for at least one year from date of shipping when stored at -20°C.</li></ol>
<b>RefSeq:</b>	<a href="#">NM_011479.4</a> , <a href="#">NP_035609.1</a>
<b>RefSeq Size:</b>	3754 bp
<b>RefSeq ORF:</b>	1683 bp
<b>Locus ID:</b>	20773
<b>UniProt ID:</b>	<a href="#">P97363</a>
<b>Cytogenetics:</b>	12 D2
<b>Gene Summary:</b>	This gene encodes a long chain base subunit of serine palmitoyltransferase. The enzyme, serine palmitoyltransferase, consists of two different subunits, and is the key enzyme in sphingolipid biosynthesis. It catalyzes the pyridoxal-5-prime-phosphate-dependent condensation of L-serine and palmitoyl-CoA to 3-oxosphinganine. A mutant allele of this gene in mice is used as a model for the human disease 'Susceptibility to Psoriasis 1'. Mutations in the human gene are associated with hereditary sensory neuropathy type I. [provided by RefSeq, Sep 2015]