

## Product datasheet for **MG208874**

### Tdrkh (NM\_028307) Mouse Tagged ORF Clone

#### Product data:

Product Type:	Expression Plasmids
Product Name:	Tdrkh (NM_028307) Mouse Tagged ORF Clone
Tag:	TurboGFP
Symbol:	Tdrkh
Synonyms:	2700091C21Rik; Tdrd2
Mammalian Cell Selection:	Neomycin
Vector:	pCMV6-AC-GFP (PS100010)
E. coli Selection:	Ampicillin (100 ug/mL)



[View online »](#)

**ORF Nucleotide Sequence:**

>MG208874 representing NM\_028307  
 Red=Cloning site Blue=ORF Green=Tags(s)

TTTTGTAATACGACTCACTATAGGGCGGCCGGAATTCGTCGACTGGATCCGGTACCGAGGAGATCTGCC  
 GCC**CGCATCGCC**

ATGTCCACTGAACGAACCTTCATGGACAAACCTGTCCACTATTCAGAAAATAGCCCTGGGCCCTAGGAATTC  
 CAGCAAGTGCAACAGTTGCCTACATTCTGTATCGTCGATATAGGGAAAGCAGAGAAGAGAGATTGACATT  
 TGTGGAGAAGATGACATTGAGATAGAGATGCGAGTCCCCAGGAGGCTGTGAAGCTCATATTGGTCGA  
 CAAGGAGCCAATATTAACAGTTGCGGAAACAGACAGGCGCGCGGATTGATGTGGACACAGAGGATGTAG  
 GCGATGAGCGAGTGTCTTATCAGTGGTTTCTGTTCAGGTGTGCAAGGCCAAAGCAGCAATCCATCA  
 GATTCTGACAGAAAACACCCAGTGTGGAGCACTCTCAGTCCCTCAGAGATCTGTGGCAGAATCATA  
 GGGAGAGGCGGTGAGACGATTCTTCTATCTGTAAGGCTTCTGGAGCCAAAATCACTTGCACAAAGAAT  
 CAGAGGGAACGTTACTACTCTCACGACTTATAAAAATCTCAGGAACACAGAAGGAAGTGGCAGCAGCTAA  
 GCATCTGATACTGGAGAAAGTTTCAGAAGATGAAGAACTTCGGAAGAGAATTGCCATTCTGCAGAAACC  
 AGAGTCCACGAAAGCAGCCAATCAGTGTGAGAAGAGAGGAAGTACAGAGCCTGGTGGAGCTGGAGAAG  
 CAGCTTTATGGAAAAATACCAATTCTAGCATGGGACCAGCTACACCCCTGGAAAGTTCCTCTCCGCAAAAGG  
 AGGTGGTGATATGGTTGTTGTAGGACAAAAGAAGTTCTGGGAGAAACCTAATGATGACAGCTTTTCAG  
 AATTCTGGTGCCAGAGCAGTCCAGAGACGTCCATGTTTGAATTCACAGTCTGACTTCAGTTTCCATG  
 CTGATGAGTACCTAGAAGTCTACGTTTCTGCTTCTGAACCCCTAATCACTTCTGGATCCAAATCATTGG  
 TCCCCGACGCTGCAGTTGGATAAACTTGTCAGTGAGTAGCCAGCACTATGAGAATAGTCTGCCTGAA  
 GACTTGACTGTGCATGTAGGAGACATTGTAGCAGCACCTTTATCTACAAATGGTTCCTGGTATCGAGCCC  
 GGGTTCTTGGAACTTGGAAAAATGGAACTTGGACCTCTACTTTGTTGACTTTGGAGATAATGGAGATTG  
 TGCACTAAAGGATCTCAGGGCTCTCAGGAGTACTTTCTAAGCCTCCATTTCAGCAATAGAATGCAGT  
 CTGGCACGGATTGCCCCACAGGTGAAGAGTGGGAAGAGGAAGCTCTAGATGAGTTTGACAGACTCACTC  
 ACTGTGCTGACTGGAAGCCCTGGTGGCCAAGATTTCTAGCTATGTCCAGACTGGAATCTCAACTTGGCC  
 AAAGATCTATTTGTATGATACCAGTGTGAGAAGAACTTGTATTTGGGCTAGAATTAGTTCGTAAGGG  
 TATGCAGTTGAACTTCTGAAGACATGGAAGAAAAACAGAACTGTCCAAATATGTTGAAGGACATGGCCA  
 CAGAAACAGATGATTCTTGAAGCATACTCACTGAAACAAAAAAGAGCCCTGAAGAGATGCCACATAC  
 CCTGCTCCTCAGCTTGTGAGAAGCTGCCTCTATGTCTGGTGTGATAACCTTGAAGACGACTTATTC

**ACGCGTACGCGGCCGCTCGAG** - GFP Tag - GTTTAA

**Protein Sequence:**

>MG208874 representing NM\_028307  
 Red=Cloning site Green=Tags(s)

MSTERTSWTNLSTIQKIALGLGIPASATVAYILYRRYRESREERLTFVGEDDIEIEMRVPQEAVKLIIGR  
 QGANIKQLRKQTGARIDVDTEVDGERVLLISGFPVQVCKAKAAIHQILTENTPVFEQLSVPQRSVGRII  
 GRGGETIRSICKASGAKITCDKESEGLLLLRLIKISGTQKEVAAAKHLILEKVSEDEELRKRIASHAET  
 RVPRKQPISVRREEVTEPGGAGEAALWKNTNSSMGPATPLEVPLRKGGDMVVVGPKEGSWEKPNDDSFQ  
 NSGAQSSPETSMEFIPSPDFSFHADEYLEVYVSASEHPNHFWIQIIGSRSLQLDKLVSEMTQHYENSLPE  
 DLTVHVGDIVAAPLSTNGSWYRVRVLTLENGNLDLYFVDFGDNGDCALKDLRALRSDFLSLPFQAI ECS  
 LARIAPTGEWEEELDEFDRLTHCADWKPLVAKISSYVQTGISTWPKIYLYDTSDEKKLDIGLELVRKG  
 YAVELPEDMEENRTVPNMLKDMATETDDSLASILTETKKSPEEMPHTLSCLSLSEAASMSGDDNLEDDL F

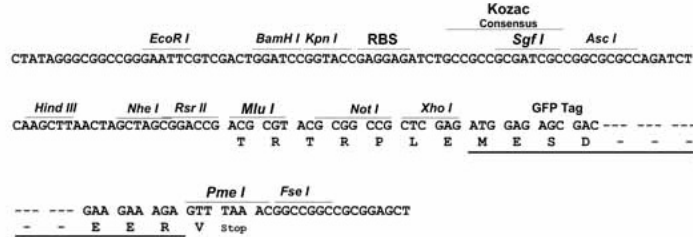
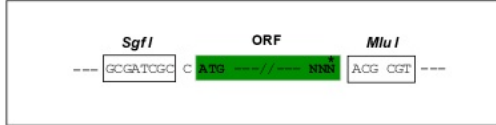
**TRTRPLE** - GFP Tag - V

**Restriction Sites:**

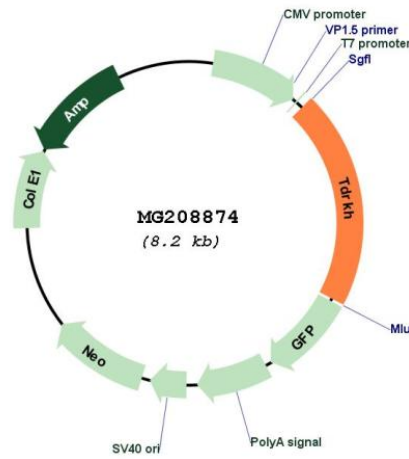
Sgfl-Mlul

Cloning Scheme:

Cloning sites used for ORF Shutting:



Plasmid Map:



<b>ACCN:</b>	NM_028307
<b>ORF Size:</b>	1680 bp
<b>OTI Disclaimer:</b>	The molecular sequence of this clone aligns with the gene accession number as a point of reference only. However, individual transcript sequences of the same gene can differ through naturally occurring variations (e.g. polymorphisms), each with its own valid existence. This clone is substantially in agreement with the reference, but a complete review of all prevailing variants is recommended prior to use. <a href="#">More info</a>
<b>OTI Annotation:</b>	This clone was engineered to express the complete ORF with an expression tag. Expression varies depending on the nature of the gene.
<b>Components:</b>	The ORF clone is ion-exchange column purified and shipped in a 2D barcoded Matrix tube containing 10ug of transfection-ready, dried plasmid DNA (reconstitute with 100 ul of water).
<b>Reconstitution Method:</b>	<ol style="list-style-type: none"><li>1. Centrifuge at 5,000xg for 5min.</li><li>2. Carefully open the tube and add 100ul of sterile water to dissolve the DNA.</li><li>3. Close the tube and incubate for 10 minutes at room temperature.</li><li>4. Briefly vortex the tube and then do a quick spin (less than 5000xg) to concentrate the liquid at the bottom.</li><li>5. Store the suspended plasmid at -20°C. The DNA is stable for at least one year from date of shipping when stored at -20°C.</li></ol>
<b>RefSeq:</b>	<a href="#">NM_028307.2</a>
<b>RefSeq Size:</b>	2665 bp
<b>RefSeq ORF:</b>	1683 bp
<b>Locus ID:</b>	72634
<b>UniProt ID:</b>	<a href="#">Q80VL1</a>
<b>Cytogenetics:</b>	3 F2.1
<b>Gene Summary:</b>	Participates in the primary piRNA biogenesis pathway and is required during spermatogenesis to repress transposable elements and prevent their mobilization, which is essential for the germline integrity. The piRNA metabolic process mediates the repression of transposable elements during meiosis by forming complexes composed of piRNAs and Piwi proteins and govern the methylation and subsequent repression of transposons. Required for the final steps of primary piRNA biogenesis by participating in the processing of 31-37 nt intermediates into mature piRNAs. May act in pi-bodies and piP-bodies by transferring piRNA precursors or intermediates to or between these granules.[UniProtKB/Swiss-Prot Function]