

Product datasheet for **MG208850**

Abhd16a (NM_178592) Mouse Tagged ORF Clone

Product data:

Product Type:	Expression Plasmids
Product Name:	Abhd16a (NM_178592) Mouse Tagged ORF Clone
Tag:	TurboGFP
Symbol:	Abhd16a
Synonyms:	AI326074; Bat-5; Bat5; D17H6S82E; NG26
Mammalian Cell Selection:	Neomycin
Vector:	pCMV6-AC-GFP (PS100010)
E. coli Selection:	Ampicillin (100 ug/mL)



[View online »](#)

ORF Nucleotide Sequence:

>MG208850 representing NM_178592
 Red=Cloning site Blue=ORF Green=Tags(s)

TTTTGTAATACGACTCACTATAGGGCGGCCGGGAATTCGTCGACTGGATCCGGTACCGAGGAGATCTGCC
 GCC**CGCATCGCC**

ATGGCGAAGCTCCTGAGCTGCGTCTCGGCCCCGGCTCTACAAGATCTACCGGGAGAGGGACACGGACC
 GGGCCCGTCCAGCGTCCCGAGACTCCCACTGCCGTCCCGCCGCTCGTCCAGCTCCTGGGATACGTA
 TTATCAGCCTCGGGCCCTGGAGAAACATGCAGACAGCATCCTGGCACTGGCTTCACTTCTGGTCCATC
 TCTTATTACTCCTCTCCCTTCGCTTCTTCTACTTATACAGGAAAGTTACTTGAGTTTGTCCAAAGTGG
 TGCCATTTTCTCACTATGCCGGGACGTTGCTGCTACTACTTGCAGGGTGGCTGCCTCCGAGGCATTGG
 CCGCTGGACCAACCCCAAGTATCGACAGTTCATCACCATTGGAAGCCACACATAGGAACCAAGTCTGCA
 GAAAACAAGAGGCAGCTGGCCAACTATAACTTCGACTTCAGGAGCTGGCCAGTCCGACTTCCACTGGGAGG
 AGCCAGCAGCCGAAGGGTCCCGAGGTGGCCCTTCCCGAGGGGTGTGGCCCTGCTTCGTCAGAGCC
 TCTGCACCGGGAAACAGCAGACAGTCTTCAACAGGGTCAAGAAGCTGCCCTGTAGATCACCAGCTAT
 CTGGTGGCACACCTTGGGGCGCCGGATGCTGTACCCAGGCTCCGTGTACCTGTCCAGAAGGCCCTCA
 TGCTGTGCTGCTGCAGGGCCAGGCCGACTGGTGAAGAGTGTAAATGGGCGCCGTGCAAAAAGTCTTGC
 CTGTGATGGTAATGAGATAGACACCATGTTTGTGGACCGACGGGGACAGCTGAGCCCCAGGGGAGAAAG
 CTGGTCACTGCTGTGAGGGGAATGCAGGATTCTATGAGTGGGCTGTGTCTCCACACCCCTAGAAGCTG
 GCTATTCTGTCTGGGCTGGAATCATCCAGGCTTTCAGGAAGCACGGGGTACCATTCCACAGAACGA
 GGCCAAATGCCATGGATGTGGTGGTTCAGTTTGCATCCACCGCTGGGCTCCAGCCCCAGGACATTGTC
 ATCTACGCCTGGTCCATTGGAGGCTTCACTGCCACGTGGGCAGCCATGTCCTACCCAGACATCAGTGCTG
 TTATCCTGGACGCTTCTTCGATGACTTGGTGGCCCTTGAAGGTATGCCGGACAGCTGGCCGAGC
 CCTGGTCAACAGGACGGTGAAGCAGCATCTCAACCTCAACAACCTCGGAGCAGCTGTGCAGGTTCCAGGGC
 CCCGTGCTGCTGGTCCGAGAACCAAGGACGAGATCATACCACCAGGTCCTGAGGACATCATGTCCA
 ACAGAGGCAATGACCTCCTGCTGAAGCTCCTGCAGTTCGGGTATCCTCGAGTGATGGTGGAGGAGGGCT
 CAGAGCTGTGAGGCAGTGGCTGGAGGCCTTCCAGCTAGAGGAAGCCTCCATTTACAGTCGCTGGGAG
 GTGGAGGAGGACTGGTGTGTCTGTGCTTCCGCTCCTACCAGGCAGAGCATGGGCTGATTTCCCTGGA
 GTGTGGGGGAGGACATGAGTGCAGATGGACGGAGGAGCTGGCGCTTCTGGCCCGGAAGCATCTACA
 CAACTTTGAGGCCACACTGCACTCCACTCCCGGCCAGCACTCCAGATGCCCTGGCACCTC

ACGCGTACGCGGCCGCTCGAG – GFP Tag – GTTTAA

Protein Sequence:

>MG208850 representing NM_178592
 Red=Cloning site Green=Tags(s)

MAKLLSCVLGPRLYKIYRERDTRAASSVPETPTAVPAASSSSWDITYQPRALEKHADSILALASVFWSI
 SYSSPFAFFYL YRKGYSLSKVVPF SHYAGTLLLLLAGVACL RIGRWTPQYRQFITILEATHRNQSA
 ENKRQLANYNDFRSWPVDFHWEPPSSRKGSRGSPRRGVALLRPELHRGTADTFLNRVKKLPCQITSY
 LVAHTLGRMLYPGSVYLLQKALMPVLLQGQARLVEECNGRRAKLLACDGNEIDTMFVDRRGTAEPQGGK
 LVICCEGNAGFYEVGCVSTPLEAGYSVLGWNHPGFAGSTGVPPQNEANAMDVVVQFAIHRLLGFQPDIV
 IYAWSIGGFTATWAAMSYPDISAVILDASFDDL VPLALKVMPDSWRALVTRTVRQHLNLNSEQLCRFQG
 PVLLVRRTKDEIITTTVPEDIMSNRGNL LLLKLLQFRYPRVMVEEGLRAVRQWLEASSQLEEASIYSRWE
 VEEDWCVSVLRSYQAEHGPDPFWSVGEDMSADGRRQLALFLARKHLHNFEATHCTPLPAQHFPMPWHL

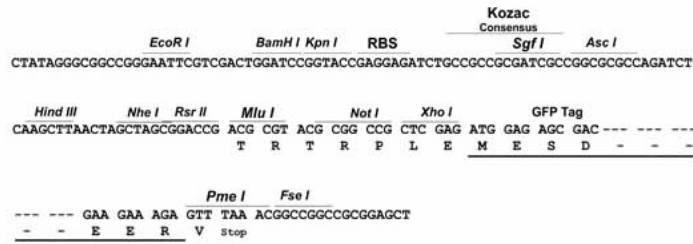
TRTRPLE – GFP Tag – V

Restriction Sites:

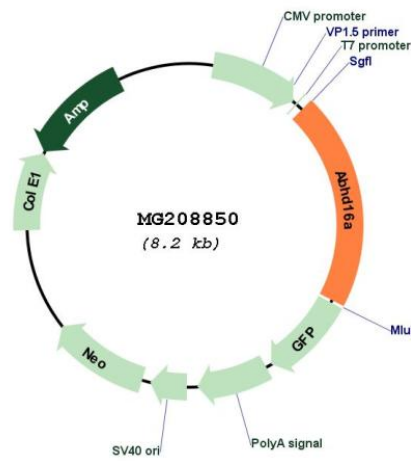
Sgfl-MluI

Cloning Scheme:

Cloning sites used for ORF Shutting:



Plasmid Map:



ACCN:	NM_178592
ORF Size:	1674 bp
OTI Disclaimer:	The molecular sequence of this clone aligns with the gene accession number as a point of reference only. However, individual transcript sequences of the same gene can differ through naturally occurring variations (e.g. polymorphisms), each with its own valid existence. This clone is substantially in agreement with the reference, but a complete review of all prevailing variants is recommended prior to use. More info
OTI Annotation:	This clone was engineered to express the complete ORF with an expression tag. Expression varies depending on the nature of the gene.
Components:	The ORF clone is ion-exchange column purified and shipped in a 2D barcoded Matrix tube containing 10ug of transfection-ready, dried plasmid DNA (reconstitute with 100 ul of water).
Reconstitution Method:	<ol style="list-style-type: none">1. Centrifuge at 5,000xg for 5min.2. Carefully open the tube and add 100ul of sterile water to dissolve the DNA.3. Close the tube and incubate for 10 minutes at room temperature.4. Briefly vortex the tube and then do a quick spin (less than 5000xg) to concentrate the liquid at the bottom.5. Store the suspended plasmid at -20°C. The DNA is stable for at least one year from date of shipping when stored at -20°C.
RefSeq:	NM_178592.2
RefSeq Size:	1945 bp
RefSeq ORF:	1677 bp
Locus ID:	193742
UniProt ID:	Q9Z1Q2
Cytogenetics:	17 18.59 cM
Gene Summary:	Phosphatidylserine (PS) lipase that mediates the hydrolysis of phosphatidylserine to generate lysophosphatidylserine (LPS) (PubMed:25580854). LPS constitutes a class of signaling lipids that regulates immunological and neurological processes (PubMed:25580854). Has no activity towards diacylglycerol, triacylglycerol or lysophosphatidylserine lipase (By similarity). Also has monoacylglycerol lipase activity, with preference for 1-(9Z,12Z-octadecadienoyl)-glycerol (1-LG) and 2-glyceryl-15-deoxy-Delta(12,14)-prostaglandin J2 (15d-PGJ(2)-G) (PubMed:25290914). [UniProtKB/Swiss-Prot Function]