

Product datasheet for **MG208847**

Osbp19 (NM_133885) Mouse Tagged ORF Clone

Product data:

Product Type:	Expression Plasmids
Product Name:	Osbp19 (NM_133885) Mouse Tagged ORF Clone
Tag:	TurboGFP
Symbol:	Osbp19
Synonyms:	2600011I06Rik; AU015843; Orp-9
Mammalian Cell Selection:	Neomycin
Vector:	pCMV6-AC-GFP (PS100010)
E. coli Selection:	Ampicillin (100 ug/mL)



[View online »](#)

ORF Nucleotide Sequence:

>MG208847 representing NM_133885
 Red=Cloning site Blue=ORF Green=Tags(s)

TTTTGTAATACGACTCACTATAGGGCGGCCGGAATTCGTCGACTGGATCCGGTACCGAGGAGATCTGCC
 GCC**GCGATCGCC**

ATGGCGTCCATCGTGAAGGGCCGCTGAGCAAATGGACTAACGTGATGAAGGGATGGCAGTATCGTTGGT
 TCGTGCTGGACTACAATGCAGGGCTGCTCTCCTACTACACGTCCAAGGACAAAATGATGAGAGGCTCTCG
 AAGAGGATGCGTTAGACTCAGAGGAGCTGTGATTGGTATAGACGACGAGGACGACAGCACCTTCACAATC
 ACTGTGCGATCAGAAAACCTTCCACTTCCAGGCTCGAGATGCAGACGAGCGAGAGAAGTGGATCCATGCCT
 TAGAAGAAACTATTCTTCGCCATACTCTTCAGCTTCAAGGTTTGGATTACAGGATTCATCCCCAGTGTCCA
 AGACTTTGATAAGAACTTACCGAGGCTGACGCGTACCTGCAGATCTTGATAGAACAATTAAGCTTTTT
 GATGACAAGCTTCAAAATGTAAGATGATGAACAGAGAAAGAAAGTTGAACTCTCAAAGACACAACAA
 ATAGCATGGTAGAATCAATTAACACTGCATTGTGTTGCTACAGATTGCTAAAAGTACTATTAATCCTGT
 AGATGCAATATACCAGCCTAGTCCCTTGAACCTGTGATCAGCACAATGCCTTCCAGACTGCCTTACCT
 CCAGAACCCGCTCAGTTGTGAAGTCAGAGCAGGTCATCTTCCTTACCTGTTGGACCTGTGTTAGCTA
 CCTTGGGACATCATCAGACTCCAACACCAATAGTACAGGCAGTGGGAATCACCACCTAGCAGCAGTCT
 GACTCCTCCCAGCCATGTCAACTTGTCTCCAAATACAGTCCCAGAGTTCTCTTACTCTAGCAGTGAAGAT
 GAGTTCTATGATGCTGATGAATTCATCAAAGTGGCTCGTCCCAAGCGCTTAATAGATTCTTCTGGAT
 CTGCCTCAGTCTTGACACACAGCAGCTCCGGAAATAGCTTAAAACGCCAGATACCACAGAGTCTCTGAA
 TTCTCCATGTCCAATGGCACAAGCGATGCTGATCTTTTTGACTCACATGACGACAGAGATGATGATGGG
 GAGGCTGGGTGAGTGGAGGAGCACAAGAGCGTTATCATGCACCTTTATCACAAGTCAGGCTGGGGATGG
 ACCTCACAAGGTAGTTCTTCCAACGTTTATTCTCGAGAGAAGATCTCTGTTAGAAATGATGCAGACTT
 TTTGCGACATCCAGACCTGTTCTGAGCATTAGTGATCAGAAGGATCCCAGGGATCGAATGGTTCAGGTT
 GTGAAATGGTACCTCTCGGCCTTCCATGCAGGAAGGAGAGGATCGGTGGCCAAAAAGCCGTACAATCCTA
 TTTTGGGTGAGATCTTTTCACTGTCAGTGGACGTTGCCAATGATACTGAAGAGAACGCAGAGCTCGTTTC
 AGAAGGGCCGTTCCCTGGGTTTCTAAGAACAGTGAACATTTGTGGCTGAGCAAGTTTCCACCATCCG
 CCCATTTCAAGCTTTTATGCTGAGTGTTTTAAACAAGAAGATAACAATCAATGCTCATATCTGGACTAAAT
 CAAAATCCTTGGGATGTCAATTGGGTACACAACATAGGTCAGGGCTGTGTCTCGTGTCTGGAGTACGA
 TGAGCACTACATCCTCACGTTCCCAATGGCTATGGAAGGTCTATCCTGACAGTGCCTGGGTGGAATTG
 GGAGGAGAAATGCAATATCAACTGCTCCAAAACGGGTTACAGCGCAAACATCGTCTCCACACTAAGCCTT
 TCTATGGGGCAAGAAGCACAGAATTAAGTGCAGAGATTTTTCTCCGAATGACAAGAAATCCTTCTGCTC
 AATTGAAGGGGAATGGAATGGTATCATGTATGCAAAATACGCAACAGGGGAAAACACTGTCTTTGTAGAC
 ACCAAGAAATGCTTATAATCAAGAAAAAGGTGAGGAAGTTGGAAGATCAGAATGAGTATGAGTCCCGCA
 GCCTTTGGAAGGATGTCACCTTCAATTTAAAAATCAGAGACATTGATGCAGCAACGGAAGCAAAGCACAG
 ACTTGAAGAAAGACAAAGAGCAGAAGCCCGAGAAAGGAAGGAGAAGGAAATTCAGTGGGAGACGAGGCTC
 TTTACGAGGATGGCGAATGCTGGGTTTACGATGAGCCTTACTGAAGCGTCTTGGTGTGTGAAGCAT

AG**CGGACCG**ACGCGTACGCGGCCGCTCGAG - GFP Tag - GTTTAA

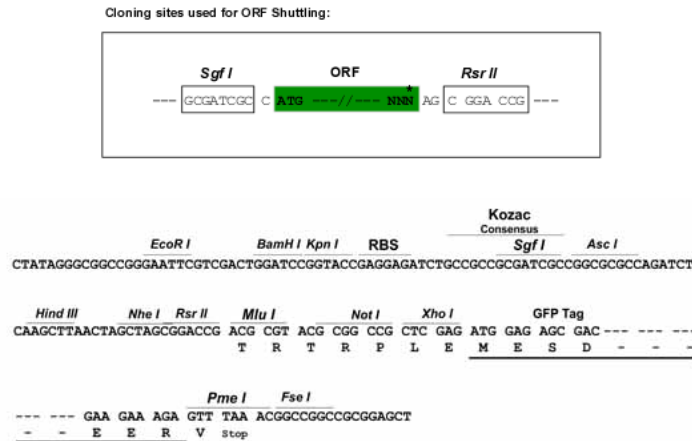
Protein Sequence: >MG208847 representing NM_133885
 Red=Cloning site Green=Tags(s)

```
MASIVEGPLSKWTNVMKGWQYRWFVLDYNAGLLSYTTSKDKMMRGSRRGCVRLRGAVIGIDDEDDSTFTI
TVDQKTFHFQARDADEREKWIHALEETILRHTLQQLD SGFIPSVQDFDKL TEADAYLQILIEQLKLF
DDKLQNCCKDDEQRKKVETLKDTTNSMVESIKHCIVLLQIAKSTINPVD AIYQPSLEPVI STMPSQTALP
PEPAQLCKSEQRPSLPVGPVLATLGHHTPTPNSTGSGNSPPSSSLTPPSHVNLSPNTVPEFSYSSSED
EFYDADEFHQSGSSPKRLIDSSGSASVLTHSSGNSLKRPDTTESLNSSMSNGTSDADLFDSHDDRDDG
EAGSVEEHKSVIMHLLSQVRLGMDLTKVVLPTFILERRS LLEMYADFFAHPDLFVSI SDQKDRDRMVQV
VKWYLSAFHAGRGRGSAKKPYNPILGEIFQCHWTL PNDTEENAELVSEGPVPWVSKNSVTFVAEQVSHHP
PISAFYAECFNKKIQFNAHIWTKSKFLGMSIGVHNI GQGCVSCLEYDEHYILTFPNGYGRSILTPVWVEL
GGECNINCSKTGYSANIVFHTKPFYGGKKHRITAE I FSPNDKKSFC SIEGEWNGIMYAKYATGENTVFVD
TKKLPIIKKKVRKLEDQNEYESRSLWKDVTFNLKIR DIDAATEAKHRLEERQRAEARERKEKEIQWETRL
FHEDGECVWYDEPLLKRLGAVKH
```

SGPTRRRLE - GFP Tag - V

Restriction Sites: SgfI-RsrII

Cloning Scheme:



ACCN: NM_133885

ORF Size: 2169 bp

OTI Disclaimer: The molecular sequence of this clone aligns with the gene accession number as a point of reference only. However, individual transcript sequences of the same gene can differ through naturally occurring variations (e.g. polymorphisms), each with its own valid existence. This clone is substantially in agreement with the reference, but a complete review of all prevailing variants is recommended prior to use. [More info](#)

OTI Annotation: This clone was engineered to express the complete ORF with an expression tag. Expression varies depending on the nature of the gene.

Components: The ORF clone is ion-exchange column purified and shipped in a 2D barcoded Matrix tube containing 10ug of transfection-ready, dried plasmid DNA (reconstitute with 100 ul of water).

Reconstitution Method:

1. Centrifuge at 5,000xg for 5min.
2. Carefully open the tube and add 100ul of sterile water to dissolve the DNA.
3. Close the tube and incubate for 10 minutes at room temperature.
4. Briefly vortex the tube and then do a quick spin (less than 5000xg) to concentrate the liquid at the bottom.
5. Store the suspended plasmid at -20°C. The DNA is stable for at least one year from date of shipping when stored at -20°C.

RefSeq: [NM_133885.4](#), [NP_598646.4](#)

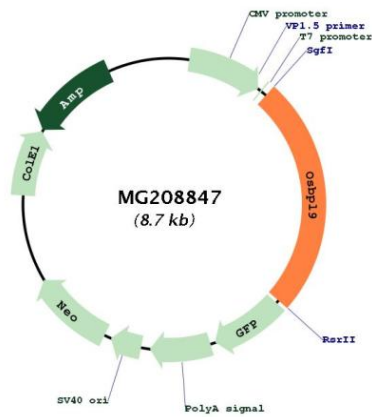
RefSeq Size: 3342 bp

RefSeq ORF: 2172 bp

Locus ID: 100273

Cytogenetics: 4 C7

Product images:



Circular map for MG208847