

Product datasheet for **MG208826**

Isyna1 (NM_023627) Mouse Tagged ORF Clone

Product data:

Product Type:	Expression Plasmids
Product Name:	Isyna1 (NM_023627) Mouse Tagged ORF Clone
Tag:	TurboGFP
Symbol:	Isyna1
Synonyms:	1300017C10Rik; AU018670
Mammalian Cell Selection:	Neomycin
Vector:	pCMV6-AC-GFP (PS100010)
E. coli Selection:	Ampicillin (100 ug/mL)



[View online »](#)

ORF Nucleotide Sequence:

>MG208826 representing NM_023627
 Red=Cloning site Blue=ORF Green=Tags(s)

TTTTGTAATACGACTCACTATAGGGCGGCCGGGAATTCGTCGACTGGATCCGGTACCGAGGAGATCTGCC
 GCC**CGGATCGCC**

ATGGAGCCCGCCCGGAGATCCTCGTGGATAGCCCGACGTGGTCTACAGCCCCGAAACCATCGAGGCGC
 GCTACGAGTACCGGACAACGCGCGTCAGCCGCGAGGGCGGCGTGTGCGGGTGCAGCCCAGGGCTACGCG
 TTTCACCTTCCGCACCGCCCGCAGGTGCCCGACTCGGGGTGATGTTGGTTCGGTGGGGCGGGAACAAC
 GGCTCCACGCTCACTGCTGCTGTTCTGGCCAATCGGCTGCGCCTAACCTGGCCACGCGCACAGGTCGCA
 AGGAGGCAAACTATTATGGATCGTTGACCCAGGCGGGCACCGTGAACCTGGGTTTGGATGAGAACGGCCG
 GGAGGTGTTTGTGCCCTCAGTGCCTGCTACCCATGGTGGCCCCAACGACCTGGTGTGTTGATGGCTGG
 GATATCTCGTCGCTGAACCTGGCCGAGGCCATGCGGCGCGCAGGTCTGGACTGCGGTCTGCAGGAAC
 AGCTGTGGCCCCACATGGAGAGCCTGCGTCCGCGGCCCTCAGTCTACATTCCTGAGTTCATCGCTGCCAA
 CCAGACAGCAGTGCAGACAACCTCATCCCTGGCACACGTGCCAACAGTTGGAGCAAATCCGAAAGGAC
 ATTAGAGATTTCCGATCCAGTGCAGGATTGGATAAGGTGATCGTCTGTGGACCGCAATACGGAGCGCT
 TCTGCGAGGTGGTCCCAGGTGCAATGACACAGCTGAAAACCTTGCTACATACTATCCAGCTTGGCCTGGA
 GGTGTCACCGTCCACACTTTTTGCTGTGGCCAGCATCCTGGAGGACTGCGCCTTCCTCAATGGATCCCCA
 CAGAACACACTGGTACCCGGTGCCTGAACTGGCTTCGACGCGCCATGTGTTTGTAGGTGGTGTGACT
 TCAAGTCAGGGCAGACTAAGGTCAAGTCTGTCTGGTGGACTTCCTCATCGGCTCTGGGCTCAAGACCAT
 GTCCATCGTGAGCTATAACCACCTGGGCAACAACGAGGGCAGAACCTGTCTGCACCGCTGCAGTCCCG
 TCCAAGGAGGTGACAAAGAGCAGTGTGGTGGACGACATGGTTCACAGCAACCATGTGCTCTACGCGCCTG
 GAGAGCGGCCAGACCCTGTGTGGTGTCAAATATGTGCCCTATGTTGGCGACAGCAAGCTGCCCTTGGGA
 CGAGTACACCTCCGAGCTGATGCTGGGTGGGACAACACCTTGGTCTCCATAATACCTGCGAGGACTCG
 CTCTGGCCGCGCCCATCATGCTGGACCTAGTGTGCTCACAGAGCTGTGTCAGCGCGTGAAGCTTCTGCA
 CAGACTCGGACCCGAGCCTCAGGGCTCCACACAGTGTGTCCCTGCTTAGCTTCTGTTAAGGCCCC
 GCTTGTGCCCCCGGCGAGCCTGTGGTGAATGCCCTTCCGCCAGCGCAGCTGTATCGAGAATATTTTC
 AGGGCTTGCCTGGGGCTCCCGCCCCAGAACCATGCTATTAGAGCACAAGATGGAGCGTCCAGGCCGAG
 GCATCAAGCCAGGAGAGGTGGTGGCCACCAGCCACTGCCTTGAAGAAAGAGCCACACCTGCCACCAA
 TGGCTGCACCGGCGATGCCAATGGGCACCCGACGCCAACACCAAAGCTGTCCACTGCT

AG**CGGACCG**ACGCGTACGCGGCCGCTCGAG – GFP Tag – GTTTAA

Protein Sequence:

>MG208826 representing NM_023627
 Red=Cloning site Green=Tags(s)

MEPAAEILVDSPDVVYSPETIEARYEYRTRVRSREGGVLRVQPRATRFTRARQVPRLVMLVWGNGN
 GSTLTAAVLANRLRLTWPTRTGRKEANYYGSLTQAGTVNLGLDENGREVFVPSALLPMVAPNDLVFDGW
 DISSLNLAEMRRAQVLDLQLEQLWPHMESLRPRPSVYIPEFIAANQTARADNLIPGTRAQQLEQIRKD
 IRDFRSSAGLDKVIWLWTANERFCEVVPGRNDTAENLLHTIQLGLEVSPSTLFAVASILEDCAFLNGSP
 QNTLVPGALELASQRHVFVGGDDFKSGQTKVKSVLVDFLIGSGLKTMISIVSYNHLGNNDGQNL SAPLQFR
 SKEVTKSSVVDDMVHNSHVL YAPGERPDHCVVIKYPVYVGD SKRALDEYTS ELMGGTNTLV LHNTCED S
 LLAAPIMLDL VLL TELCQRVSFCTSDPEPQGFHTVLSLLSFLFKAPLVPPGSPV VNALFRQRSCIENIF
 RACVGLPPQNHMLLEHKMERPGGIKPGEVVATSP L PCKKEPTPATNGCTGDANGHPQAPT PKLSTA

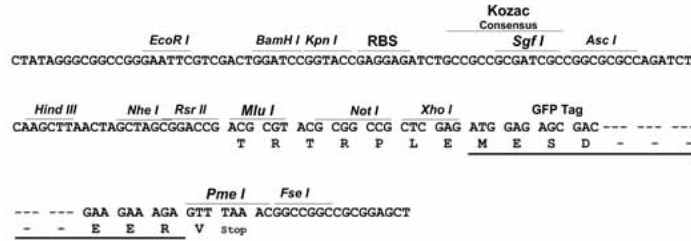
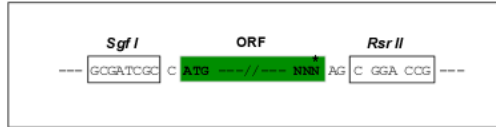
SGP**TRRRLE** – GFP Tag – V

Restriction Sites:

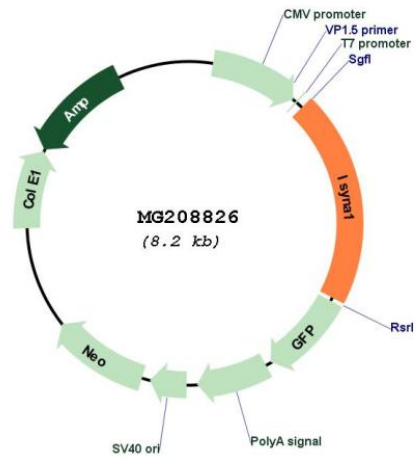
Sgfl-RsrII

Cloning Scheme:

Cloning sites used for ORF Shuttling:



Plasmid Map:



ACCN:	NM_023627
ORF Size:	1671 bp
OTI Disclaimer:	The molecular sequence of this clone aligns with the gene accession number as a point of reference only. However, individual transcript sequences of the same gene can differ through naturally occurring variations (e.g. polymorphisms), each with its own valid existence. This clone is substantially in agreement with the reference, but a complete review of all prevailing variants is recommended prior to use. More info
OTI Annotation:	This clone was engineered to express the complete ORF with an expression tag. Expression varies depending on the nature of the gene.
Components:	The ORF clone is ion-exchange column purified and shipped in a 2D barcoded Matrix tube containing 10ug of transfection-ready, dried plasmid DNA (reconstitute with 100 ul of water).
Reconstitution Method:	<ol style="list-style-type: none">1. Centrifuge at 5,000xg for 5min.2. Carefully open the tube and add 100ul of sterile water to dissolve the DNA.3. Close the tube and incubate for 10 minutes at room temperature.4. Briefly vortex the tube and then do a quick spin (less than 5000xg) to concentrate the liquid at the bottom.5. Store the suspended plasmid at -20°C. The DNA is stable for at least one year from date of shipping when stored at -20°C.
RefSeq:	NM_023627.1 , NP_076116.1
RefSeq Size:	1850 bp
RefSeq ORF:	1674 bp
Locus ID:	71780
UniProt ID:	Q9JHU9
Cytogenetics:	8 B3.3
Gene Summary:	Key enzyme in myo-inositol biosynthesis pathway that catalyzes the conversion of glucose 6-phosphate to 1-myo-inositol 1-phosphate in a NAD-dependent manner. Rate-limiting enzyme in the synthesis of all inositol-containing compounds (By similarity).[UniProtKB/Swiss-Prot Function]