

## Product datasheet for **MG208816**

### Mon1a (NM\_028369) Mouse Tagged ORF Clone

#### Product data:

Product Type:	Expression Plasmids
Product Name:	Mon1a (NM_028369) Mouse Tagged ORF Clone
Tag:	TurboGFP
Symbol:	Mon1a
Synonyms:	2810468K17Rik
Mammalian Cell Selection:	Neomycin
Vector:	pCMV6-AC-GFP (PS100010)
E. coli Selection:	Ampicillin (100 ug/mL)



[View online »](#)

**ORF Nucleotide Sequence:**

>MG208816 representing NM\_028369  
 Red=Cloning site Blue=ORF Green=Tags(s)

TTTTGTAATACGACTCACTATAGGGCGGCCGGGAATTCGTCGACTGGATCCGGTACCGAGGAGATCTGCC  
 GCC**GCGATCGCC**

ATGGCTGCTGACATGCAGAGGAAGAGAAGCAGCGAATGCCCGAGGGCACACTGGCTCCTTCCAATGGCC  
 AAAGTGTGAAAGAGCTGAGAGCCCCACGCCAGGACTAACCCAGGGAACGAGGCCAGGTGCTGGGCAGGA  
 GGGTGCATGTTTCGTCATACACGTTCTATGAAGACCTGACAGAGTTAGAAGACAGAGAAGCTTCTGGG  
 GACAGCCCCAAAGAGTGCCTTGGGAGTCCCCACCACTGGCTACGGACATGCGCCAGATTAGCCAGGACT  
 TCAGCGAGCTAAGCACCCAGCTGACCGGTGGGCCGGGACCTGCAGGAGGAAATGCTGCCAGGAAGCTC  
 TGAAGACTGGCCGGAGCCCCAGGGCGCAGCTGGCCGAGGAGCAGCCACAGAGCCCTCCAAGAAGGCTCA  
 ACTGAAGGGGAAGAGGAAGACGCTACGGAGGCATGGCGTCTCCACCAGAAGCATGTGTTTGTACTGAGTG  
 AGGCAGGGAAGCCTGTGTATTCTCGCTATGGTCTGAGGAAGCCCTTCCAGCACTATGGGTGTCATGGT  
 TGCCCTGGTGCCTTCTGGAGGCAGACAAGAATGCCATCCGCTCCATCCATGCAGATGGCTACAAGGTA  
 GTATTCGTGCGCCGGAGCCCTCTGGTGTGGTGGCGGTGGCCCGACGCGCAGTCGGCCAGGAGCTGG  
 CGCAGGAGCTACTGTACATCTACTACCAGATCCTGAGCCTTCTTACCGCGCGCAGCTGAGCCACATCTT  
 CCAGCAGAAGCAGAACTACGACCTGCGGCGCTGCTCTCGGGCTCGGAGCGAATCACCGATAACCTGCTG  
 CAGCTAATGGCTCGAGACCCAGTTTCTGATGGGCGCGCGCGGTGCCTGCCTTTGGCAGCGGCCGTGC  
 GGGACACGGTGAAGTGCAGCCTGCAGCAGGCGCGTGTCTCGCAGCCTGGTCTTTCCATCTGTGGCCCA  
 TAACCAGCTGGTGGCGCTCGTGCGCCGAAGGACCAATTCCTTCATCCCATCGACCTGCACCTGCTTTTC  
 AACCTATTAGCTCCTCCTCCTTCCGTGAGGGCGAGGCTTGGACCCAGTGTGCCTGCCAAAGTTCA  
 ATGCGGCCGGCTTCTTCCACGCACACATCTTACCTAGAACCAGACCGACCTGCTGCTGCTGAT  
 CTCACCTGACCGTGAGGACTTCTTTGAGTCTCTGACTGCCGACGCGCTTCCAGGAACGCTCCGAAAG  
 CGGGGAACCCATTTGGCCCTGCGGGAGGCGCTGCGCACACCTTACTACAGCGTTGCCAAGTGGGATCC  
 CTGACCTTCGCCACTTCTATAAATCAAAGAGCTCAGGACTCTTACCAGTCTGAGATTGAGGCCCC  
 GTACTCCAGTGAGGAGGAGCAGGAGCGACTGTTGGGCTCTACCAGTACCTGCATAGCCGTGCCACAAT  
 GCCTCTCGCCACTCAAGACCTACTACTACACAGGCCCAATGAGAACCTCTAGCCTGGGTGACAGGTG  
 CCTTTGAACTCTACATGTGCTACAGCCACTGGGACCAAGGCATCAGCTGTCAGCGCCATCCATAAGCT  
 GATGCGCTGGATCCGTAAGAGGAAGACCGTCTTTCATCCTCACGCCCTCACCTAT

**ACGCGTACGCGGCCGCTCGAG** - GFP Tag - GTTTAA

**Protein Sequence:**

>MG208816 representing NM\_028369  
 Red=Cloning site Green=Tags(s)

MAADMQRKRSSECEPGLAPSNQSVRAESPTPGLTQGTPEGAGQEGAMFVHTRSIEDL TELEDREASG  
 DSPKECVGSPPLATDMRQISQDFSELSTQLTGVARDLQEEMLPSSSEDWPEPQGAAGRGAATEPSQEGS  
 TEGEEEDATEAWRLHQKHVFLSEAGKPVYSRYGSEEAL SSTMGVMVALVSFLEADKNAIRSIHADGYKV  
 VFVRRSPLVAVARTRQSAQELAQELLYIYYQILSLLTGAQLSHIFQQKQNYDLRRLLSGSERITDNLL  
 QLMARDPSFLMGAARCLPLAAAVRDTVSASLQARARSLVFSILLAHNQLVALVRRKQFLHPIDLHLLF  
 NLISSSSSFREGEAWTPVCLPKFNAAGFFHAHISYLEPDTDLCLLLISTDREDFFAVSDCRRRFQERLRK  
 RGTHLALREALRTPYYSVAQVGIPLDRHFLYKSKSSGLFTSPEIEAPYSSEEEQERLLGLYQLHSRAHN  
 ASRPLKTIYYTGPENLLAWVTGAFELYMCYSPLGKASAVSAIHKLMRWIRKEEDRLFILPTLY

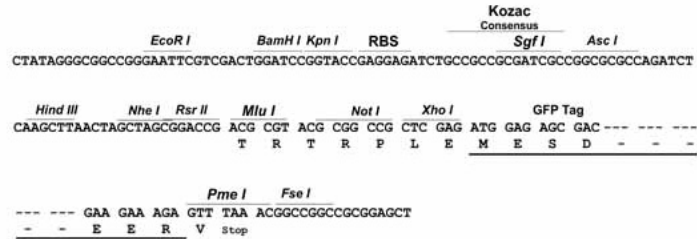
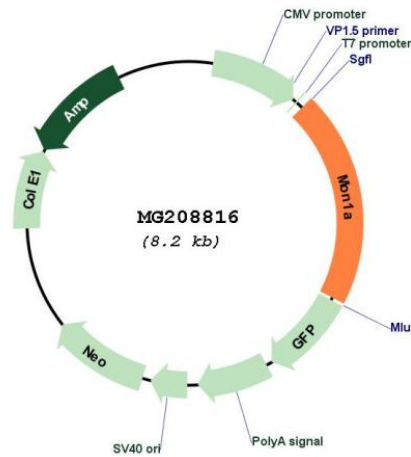
**TRTRPLE** - GFP Tag - V

**Restriction Sites:**

Sgfl-MluI

**Cloning Scheme:**

Cloning sites used for ORF Shutting:


**Plasmid Map:**


<b>ACCN:</b>	NM_028369
<b>ORF Size:</b>	1668 bp
<b>OTI Disclaimer:</b>	The molecular sequence of this clone aligns with the gene accession number as a point of reference only. However, individual transcript sequences of the same gene can differ through naturally occurring variations (e.g. polymorphisms), each with its own valid existence. This clone is substantially in agreement with the reference, but a complete review of all prevailing variants is recommended prior to use. <a href="#">More info</a>
<b>OTI Annotation:</b>	This clone was engineered to express the complete ORF with an expression tag. Expression varies depending on the nature of the gene.
<b>Components:</b>	The ORF clone is ion-exchange column purified and shipped in a 2D barcoded Matrix tube containing 10ug of transfection-ready, dried plasmid DNA (reconstitute with 100 ul of water).
<b>Reconstitution Method:</b>	<ol style="list-style-type: none"><li>1. Centrifuge at 5,000xg for 5min.</li><li>2. Carefully open the tube and add 100ul of sterile water to dissolve the DNA.</li><li>3. Close the tube and incubate for 10 minutes at room temperature.</li><li>4. Briefly vortex the tube and then do a quick spin (less than 5000xg) to concentrate the liquid at the bottom.</li><li>5. Store the suspended plasmid at -20°C. The DNA is stable for at least one year from date of shipping when stored at -20°C.</li></ol>
<b>RefSeq:</b>	<a href="#">NM_028369.1</a> , <a href="#">NP_082645.1</a>
<b>RefSeq Size:</b>	2028 bp
<b>RefSeq ORF:</b>	1671 bp
<b>Locus ID:</b>	72825
<b>UniProt ID:</b>	<a href="#">Q6PDG8</a>
<b>Cytogenetics:</b>	9 F1
<b>Gene Summary:</b>	Plays an important role in membrane trafficking through the secretory apparatus. Not involved in endocytic trafficking to lysosomes (PubMed:17632513). Acts in concert with CCZ1, as a guanine exchange factor (GEF) for RAB7, promotes the exchange of GDP to GTP, converting it from an inactive GDP-bound form into an active GTP-bound form (By similarity). [UniProtKB/Swiss-Prot Function]