

## Product datasheet for **MG208782**

### **Slc1a5 (NM\_009201) Mouse Tagged ORF Clone**

#### **Product data:**

Product Type:	Expression Plasmids
Product Name:	Slc1a5 (NM_009201) Mouse Tagged ORF Clone
Tag:	TurboGFP
Symbol:	Slc1a5
Synonyms:	AAAT; ASCT2; ATBO; M7V1; M7VS1; R16; RDRC; Slc1a7
Mammalian Cell Selection:	Neomycin
Vector:	pCMV6-AC-GFP (PS100010)
E. coli Selection:	Ampicillin (100 ug/mL)



[View online »](#)

**ORF Nucleotide Sequence:**

>MG208782 representing NM\_009201  
 Red=Cloning site Blue=ORF Green=Tags(s)

TTTTGTAATACGACTCACTATAGGGCGGCCGGGAATTCGTCGACTGGATCCGGTACCGAGGAGATCTGCC  
 GCC**CGCATCGCC**

ATGGCAGTGGATCCCCCTAAGGCTGACCCCAAAGGGGTAGTAGCGGTGGATTCCACCGCGAACGGTGGCC  
 CCGCGCTGGGATCCAGAGAGGACCAGAGTGCAGAAAGCAGGTGGTTGCTGCGGTTCCCGTGACCGGGTGGC  
 CCGCTGCATTCGCGCAACCTGCTGGTGTCTCAGCGTGGCTGCGGTGGTGGCTGGCGTGGGGCTGGGG  
 CTGGGGTCTCGGCGCGGGCGGTGCTGACGCGTGGTCCCAGCGCTTGACCGCTTTCGCTTCCCGG  
 GAGAGCTGCTGCTGCTGCTGAAGATGATCATCTGCCGCTCGTGGTGTGCAGCCTGATCGGAGGTGC  
 AGCCAGCTGGACCCTAGCGCGCTCGGTCTGTGGGCGCTGGGCGTGTCTTTTTCTGGTCAACACA  
 CTGCTCGCGTCCGCGCTCGGCTGGGTTGGCCCTGGCGTGAAGCCGGGCGCCCGTTACCGCCATCA  
 CCTCCATCAACGACTCTGTTGTAGACCCCTGTGCCCGAGTGCACCAACCAAAGAGGTGCTGGATTCCTT  
 TCTAGATCTCGTAGGAATATTTCCCTCCAACTGGTGTCTGCTGCCCTCCGCTTTTTGCTACCTCA  
 TATGAACCCAAAGACAACCTCATGTAAAATACCGCAATCCTGTATCCAGCGGGAGATCAATTCAACCATGG  
 TCCAGTCTCTGTGAGGTGGAGGAATGAACATCCTGGGCTGGTGGTCTTCGCTATCGCTTTGGTGT  
 GGCTCTGCGGAAGCTGGGGCCGAGGGTGAAGTCTCATTGTTTCTCAACTCCTTCAATGATGCCACC  
 ATGGTCTGGTCTCCTGGATTATGTGGTACGACCCGTTGGAATCCTTGTCTGGTGGCCAGGCAAGATT  
 GTGGAGATGAAAGACGTCGCGCAGCTTTCATCAGCCTCCGGCAAATACATTCTGTGCTGGCCTGCTGGG  
 CCACGCCATCCACGGGCTCCTGGTCTGCTCTCATCTACTTCTTCCACCCGCAAAAATCCCTATCGA  
 TTCTGTGGGGCATCATGACACCCCTGGCACTGCTTTCCGGACCTTTCTAGCTCTGCCACCTTGCCCTC  
 TGATGTAAGTGTGTAGAGGAGAAGAATGGTGTGGCCAAACACATCAGCCGGTTCATCCTACCCATCGG  
 CGCCACGGTCAACATGGACGGGGCGCGCTGTTCCAGTGTGGCGGAGTGTTCATCGCACAACTAAAC  
 GGGGTGTCCTGACTTCGTGAAGATCATCACCATCCTGGTACAGCCACAGCATCCAGTGTGGTGGCGG  
 CAGGGATCCCTGCAGGGGGCTCCTCACCTCGCCATCATCCTGGAAGCAGTCAGCCTGCCTGTGAAGGA  
 CATCTCCTTGATCTTGGCCGTGGACTGGCTAGTGGACAGGTCTGTACTGTCTCAACGTGGAAGGTGAT  
 GCTTTTGGGGCTGGACTGCTTCAAGATTACGTGGATCGAACCAAGATGCCGAGCTCAGAGCCGAATTGA  
 TCCAGGTGAAGAACGAGGTGTCTCTGAATCCACTGCCCTCGCCACAGAGGAGGGGAATCCCTCCTGAA  
 ACAGTACCAGGGACCCACCGGGACTCCAGTGCCACGTTGAAAAGGAATCTGTCATG

**ACGCGTACGCGGCCGCTCGAG** – GFP Tag – GTTTAA

**Protein Sequence:**

>MG208782 representing NM\_009201  
 Red=Cloning site Green=Tags(s)

MAVDPPKADPKGVVAVDSTANGGPALGSREDQSAKAGCCGSRDRVRRIRANLLVLLTVAAVVAGVGLG  
 LGVSAAGGADALGPARTAFAPGELLRLKMIILPLVVCSLIGGAASLDPSALGRVGAWALLFFLVTT  
 LLASALGVGLALALKPGAAVTAITSINDSVVDPCARSAPTKEVLDSFLDLVRNIFPSKLVSAAFRSFATS  
 YEPKDNSCKIPQSCIQREINSTMVQLLCEVEGMNIGLVVFAIVFGVALRKLGPPEGELLIRFFNSFNDAT  
 MVLVSWIMWYAPVGILVLVARQDCGDERPPALHQPANTFCAGLLGHAIHGLLVLPIYFLFTRKNPYR  
 FLWGIMTPLATAFGTSSSATLPLMMKCVEEKNGVAKHISRILPIGATVNMDGAALFQCVAAVFAQLN  
 GVSLDFVKIITILVTATASSVGAAGIPAGGVLTLAIILEAVSLPVKDISLILAVDWLVDRSCTVLNVEGD  
 AFGAGLLQSYVDRTKMPSSEPELIQVKNEVSLNPLPLATEEGNPLLKQYQGPTGDSSATFEKESVM

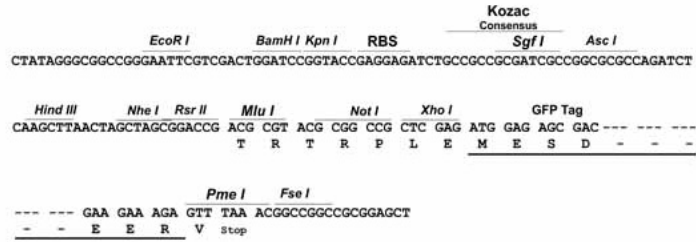
**TRTRPLE** – GFP Tag – V

**Restriction Sites:**

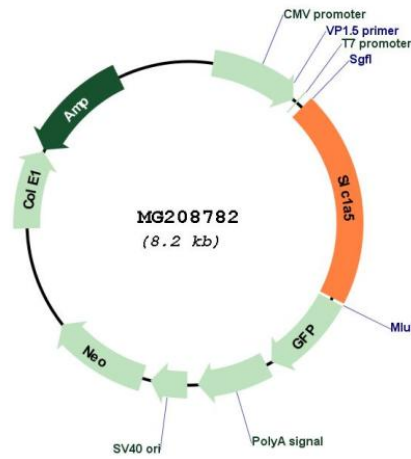
Sgfl-MluI

Cloning Scheme:

Cloning sites used for ORF Shutting:



Plasmid Map:



<b>ACCN:</b>	NM_009201
<b>ORF Size:</b>	1665 bp
<b>OTI Disclaimer:</b>	The molecular sequence of this clone aligns with the gene accession number as a point of reference only. However, individual transcript sequences of the same gene can differ through naturally occurring variations (e.g. polymorphisms), each with its own valid existence. This clone is substantially in agreement with the reference, but a complete review of all prevailing variants is recommended prior to use. <a href="#">More info</a>
<b>OTI Annotation:</b>	This clone was engineered to express the complete ORF with an expression tag. Expression varies depending on the nature of the gene.
<b>Components:</b>	The ORF clone is ion-exchange column purified and shipped in a 2D barcoded Matrix tube containing 10ug of transfection-ready, dried plasmid DNA (reconstitute with 100 ul of water).
<b>Reconstitution Method:</b>	<ol style="list-style-type: none"><li>1. Centrifuge at 5,000xg for 5min.</li><li>2. Carefully open the tube and add 100ul of sterile water to dissolve the DNA.</li><li>3. Close the tube and incubate for 10 minutes at room temperature.</li><li>4. Briefly vortex the tube and then do a quick spin (less than 5000xg) to concentrate the liquid at the bottom.</li><li>5. Store the suspended plasmid at -20°C. The DNA is stable for at least one year from date of shipping when stored at -20°C.</li></ol>
<b>RefSeq:</b>	<a href="#">NM_009201.2</a> , <a href="#">NP_033227.2</a>
<b>RefSeq Size:</b>	2758 bp
<b>RefSeq ORF:</b>	1668 bp
<b>Locus ID:</b>	20514
<b>Cytogenetics:</b>	7 A2