

Product datasheet for **MG208780**

Krt6a (NM_008476) Mouse Tagged ORF Clone

Product data:

Product Type:	Expression Plasmids
Product Name:	Krt6a (NM_008476) Mouse Tagged ORF Clone
Tag:	TurboGFP
Symbol:	Krt6a
Synonyms:	2310016L08Rik; Krt2-6a; Krt2-6c; MK6a; mK6[a]
Mammalian Cell Selection:	Neomycin
Vector:	pCMV6-AC-GFP (PS100010)
E. coli Selection:	Ampicillin (100 ug/mL)



[View online »](#)

ORF Nucleotide Sequence:

>MG208780 representing NM_008476
 Red=Cloning site Blue=ORF Green=Tags(s)

TTTTGTAATACGACTCACTATAGGGCGGCCGGGAATTCGTCGACTGGATCCGGTACCGAGGAGATCTGCC
 GCC**GCGATCGCC**

ATGTCTACAAAACCACCATCAAAGTCAAACCAGCCACCGTGGCTACAGTGCCAGCTCAGCCAGAGTGC
 CTGGGCTCAACCGCTCTGGCTTCAGCAGTGTGCCGTGTGCCGCTCCCGGGCAGCGGTGGCTCCAGTGC
 AATGTGTGGAGGAGCTGGCTTTGGCAGCAGGAGCCTCTATGGTGTGGGGAGCTCCAAGAGGATCTCCATC
 GGAGGGGGCAGCTGTGGCATTGGAGGAGGCTATGGCAGCCGATTTGGAGGAAGCTTCGGCATTGGAGGTG
 GAGCTGGTAGTGGCTTTGGCTTCGGTGGTGGAGCTGGCTTTGGTGGTGGCTATGGGGAGCTGGCTTCCC
 GGTGTGCCACCTGGAGGCATCCAAGAGGTCAACATCAACCAGAGCCTCCTCACACCCCTGAACCTGCAA
 ATTGACCCACCATCCAGCGGTGAGGACTGAGGAGAGGGAGCAGATCAAGACCCCTCAACAACAAGTTG
 CCTCCTTCATCGACAAGGTGCGTTCTGGAGCAGCAGAACAAGGTCTGGACACCAAGTGGGCCCTGCT
 GCAAGAGCAGGGCACCAAGACCGTGGAGCAGAACCTGGAGCCTATGTTTGAGCAGTACATCAGCAACCTC
 CGCAGACAGCTGGACAGCATCATTGGAGAGAGGGGTGCCTGGACTCAGAGCTGAGGAACATGCAGGACA
 CAGTGGAGGACTACAAGAGCAAATATGAAGATGAAATCAACAAGCGCACAGCAGCAGAGAATGAATTCGT
 GACCCTGAAGAAGGATGTAGATGCTGCCTACATGAACAAAGTTGAACTGCAAGCCAAGGCAGACAGTCTA
 ACAGATGATATCAACTTCTTGAGAGCTCTATGAAGCAGAAGTGTCTCAGATGCAAACTCACATCTCAG
 ACACATCTGTGGTCTCTCCATGGACAACAACCGTAGCCTGGACCTGGACAGCATCATCGCTGAGGTCAA
 GGCCAGTATGAGGACATTGCTCAGAGAAGTGGGCTGAAGCTGAGTCTGGTACCAGACTAAATATGAG
 GAGTGCAGGTACAGCTGGCAGACATGGGACGACCTACGCAACACCAAGCAGGAGATTGCTGAGATCA
 ACCGCTATGATCCAGAGGCTGAGATCTGAGATCGACCAGTTAAGAAGCAGTGTGCCAACCTGCAAGCTGC
 TATTGCTGATGCTGAGCAACGTGGGAGATGGCCCTGAAGGATGCCAGGGCAAGCTGGAAGGGCTGGAG
 GATGCCCTGCAGAAGGCCAAACAGGACATGGCCAGGCTGCTGAAGGAGTACCAGGAACTCATGAATGTCA
 AGCTGGCCCTGGATGTGGAAATTGCCACCTACAGGAAGCTGCTGGAAGGAGAGGAGTGCAGGTTGAATGG
 TGAAGGTGTTGGACAGTCAACATCTCTGTGGTGCAGTCCACCGTGTCCAGCGGCTATGGCAGTCCCGGG
 GGTGCCAGCAGCAGCTTAGGCCTGGTGGAGGCAGCAGCTACTCCTATAGCAGCAGCCATGGCCTTGGAG
 GTGGCTCAGTGTGGCAGTGGCAGAGCCATCGGAGGTGGCTCAGCTCTTCTGGTGGCCTCAGCTCTTC
 TACCATCAAATACACCACCCTCTCCAGCAAGAAGAGCTACAGGCAG

ACGCGTACGCGGCCGCTCGAG - GFP Tag - GTTTAA

Protein Sequence:

>MG208780 representing NM_008476
 Red=Cloning site Green=Tags(s)

MSTKTTIKSQTSHRYSASSARVPGLNRSGFSSVSVCRSRGGSSAMCGGAGFGRSLYGVSSKRISI
 GGGSCGIGGGYGSRFGGSFYGGGAGSGFGGGAGFGGGYGGAGFPVCPGGIIEVITINQSLTLPNLQ
 IDPTIQRVREEREQIKTLNKFASFIDKVRFLQKQNKVLDTKWALLQEQTGKTVRQNLPEMFEQYISNL
 RRQLDSIIGERGLDSELRNMQDTVEDYKSKYEDEINKRTAAENEFVTLKDVDAAYMKNVQLQAKADSL
 TDDINFLRALYEAELSQMQTHISDTSVLSMDNRSRLDLSIIAEVKAQYEDIAQRSRAEASWYQTKYE
 ELQVTAGRHGDDL RNTKQEIAEINRMIQRLRSEIDHVKKQCANLQAAIADAEQRGEMALKDARGKLEGLE
 DALQKAKQDMARLLKEYQELMNVKLALDVEIATYRKLLEGEECRLNGEGVGPVNI SVVQSTVSSGYGSAG
 GASSSLGLGGSSYSYSSSHLGGGF SAGSGRAIGGGLSSGGLSSSTIKYTTTTSSKKSRYRQ

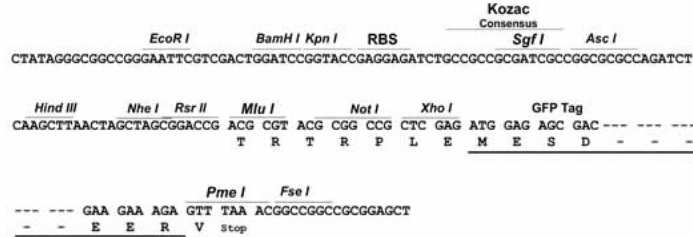
TRTRPLE - GFP Tag - V

Restriction Sites:

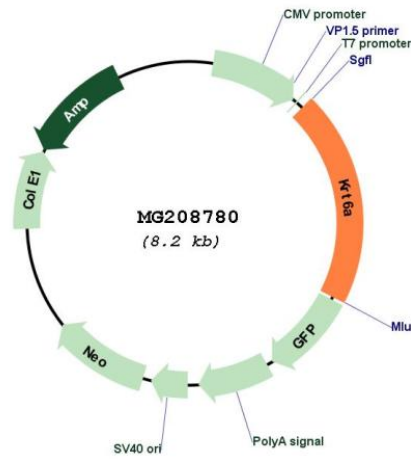
Sgfl-MluI

Cloning Scheme:

Cloning sites used for ORF Shutting:



Plasmid Map:



ACCN:	NM_008476
ORF Size:	1659 bp
OTI Disclaimer:	The molecular sequence of this clone aligns with the gene accession number as a point of reference only. However, individual transcript sequences of the same gene can differ through naturally occurring variations (e.g. polymorphisms), each with its own valid existence. This clone is substantially in agreement with the reference, but a complete review of all prevailing variants is recommended prior to use. More info
OTI Annotation:	This clone was engineered to express the complete ORF with an expression tag. Expression varies depending on the nature of the gene.
Components:	The ORF clone is ion-exchange column purified and shipped in a 2D barcoded Matrix tube containing 10ug of transfection-ready, dried plasmid DNA (reconstitute with 100 ul of water).
Reconstitution Method:	<ol style="list-style-type: none">1. Centrifuge at 5,000xg for 5min.2. Carefully open the tube and add 100ul of sterile water to dissolve the DNA.3. Close the tube and incubate for 10 minutes at room temperature.4. Briefly vortex the tube and then do a quick spin (less than 5000xg) to concentrate the liquid at the bottom.5. Store the suspended plasmid at -20°C. The DNA is stable for at least one year from date of shipping when stored at -20°C.
RefSeq:	NM_008476.3 , NP_032502.3
RefSeq Size:	2287 bp
RefSeq ORF:	1662 bp
Locus ID:	16687
UniProt ID:	P50446
Cytogenetics:	15 56.97 cM
Gene Summary:	Epidermis-specific type I keratin involved in wound healing (PubMed:10866680). Involved in the activation of follicular keratinocytes after wounding, while it does not play a major role in keratinocyte proliferation or migration (PubMed:10866680). Participates in the regulation of epithelial migration by inhibiting the activity of SRC during wound repair (PubMed:22529101). [UniProtKB/Swiss-Prot Function]