

Product datasheet for **MG208776**

Zkscan3 (NM_023685) Mouse Tagged ORF Clone

Product data:

Product Type:	Expression Plasmids
Product Name:	Zkscan3 (NM_023685) Mouse Tagged ORF Clone
Tag:	TurboGFP
Symbol:	Zkscan3
Synonyms:	2810435N07Rik; AA408594; A1132359; mszf35; Skz1; Zf47; Zfp-47; Zfp306; Zfp307
Mammalian Cell Selection:	Neomycin
Vector:	pCMV6-AC-GFP (PS100010)
E. coli Selection:	Ampicillin (100 ug/mL)



[View online »](#)

ORF Nucleotide Sequence:

>MG208776 representing NM_023685
 Red=Cloning site Blue=ORF Green=Tags(s)

TTTTGTAATACGACTCACTATAGGGCGGCCGGAATTCGTCGACTGGATCCGGTACCGAGGAGATCTGCC
 GCC**CGCATCGCC**

ATGGCTAGAGAATCAAGGAAAGCACAACTTGGACTCACACTCTGCAGAGGACCAGATGGAGCTACTGG
 TCATAAAGGTGGAACAAGAAGAGTCTCCCCCTTGGCAGAGGAGACCAGTTGGCTGGGCAGTCTGGGCC
 TGACCGCTCCCGCCAGCGCTTCCGTGCTTCCCGTACCCAGAGGAGCCGGGCCCGGCAGGCGCTGAGC
 CGGCTCCGCGAGCTCTGCAGACAGTGGCTGCGGCCAGACATGCACAGCAAGGAGCAGATCTGGAGCTGC
 TGGTGCTGGAGCAGTTCTGACCATCTGCCAGGGGAGCTGCAGGCTGGGTGCGCAGCAGCACCCCGA
 CAGCGGGAGGAGGTGGTGGCGCTGCTGGAGTACTTGGACAGGCAGCTGGATGACACACCTCCACAGTT
 CCAGATGATGACGATGGGCAGGAACCTTTGCTCCAAGGCAGTGTGTTGACATCAGCTCAGGGCTCAG
 AAAGTAGCCAGATGGAGCCCGTGGAGCCTCTGCTGAAGCAGGAGTCTTTGGGATCCCTGCCCTCAGAAGT
 CAGAGTCACTCATGTGGGCACTGTGGAGAAGATGGAGTGACAGTACTAGGCTCACATCGGAATTACAG
 GGGTTGCTGAAAAATGGAAGATGTAGCCCAAGTCTTTCCCCAGATGGACAGAGCAGGATTCATCTCAGA
 TGAACCTCTACAAAGATGGAATGCAGGAGCACTCTGGCAGCCTGGTTCCCTGGATCAGGACATGCAGAC
 TAAGGTTAGGGACTTGCCTCGAGCTGAAGAATACAGGGACAAAAGCCTGAGCAGACAGTGTGCTTCCCTG
 GGTGAAGACACTGTCCCGATTCTACAGGTGCAGAAGCCAGTGCAGGAAAGCAAGTTACAGGCAGCAC
 AGAAGAGTGCCACAGGAACCGCGGTTCTATTGCCGTGAATGTGGGAAGAGCTTTGCTCAGAGTTCAGG
 CCTAAGTAAACACAAAAGAAATCCACACTGGATTGAAACCTATGAATGTGAGGAGTGTGGCAAAGCCTTC
 ATTGGAAGCTCAGCTCTCATTATTCATCAGAGAGTTCACACTGGTGAGAAGCCATATGAGTGTGAAGAAT
 GTGGTAAGGCCTTCAGTCACAGCTCAGATCTCATCAAACACAGAGAACCACACTGGGGAAAAGCCCTA
 CGAGTGTGATGACTGTGGGAAAACCTTCACTCAGAGCTGCAGCCTCCTTGAACATCACAGAATTCACACT
 GGGGAGAAGCCATACCAGTGCAACATGTGTCCCAAAGCCTTTAGCGCTAGCTCACATCTTCTGAGACATC
 AGAGGACCCTACTGGGGATAAAGATTTTTTTGTTCCAGAACCTTACTGGGAAAGTCAAGTAGGGTGGAA
 AAGCCATTGGGAAAATATTGAACTCCTGTGTCTTATCAATGTAATGATTGTGAGAGAAGTTTCAGTAGG
 ATTACAAGCCTTATTGAACACAAAAGTACACACTGGTGAGAAGCCCTTTGAGTGCCAAACCTGTGGAA
 AAGGCTTCACCCGACCTTATACCTTATTCAACATCAGAGAAGACACACGGGGAAGAAAACCTTCTGTAC
 AGTGACCCCTGCTGTACATTCGAAGTTGGTGTCAACTGTCATTGAAC

ACGCGTACGCGGCCGCTCGAG - GFP Tag - GTTTAA

Protein Sequence:

>MG208776 representing NM_023685
 Red=Cloning site Green=Tags(s)

MARESTTTLDSSHAEDQMELLVIKVEQEESPLAEETSWLGSPGPDERSRQRFRAFRYPEAAGPRQALS
 RLRELCRQWLRPDMHSKEQILELLVLEQFLTILPGELQAWVREQHPDSGEEVVALLEYLDRQLDDTTPPVQ
 PDDDDGQELLCSKAVLLTSAQSESSQMEPVPELLKQESLGLPSEVRVTHVGHCGEDGVTATRLTSELQ
 GLLKMEDVAPVLSRWTEQDSSQMNLKQDGMQEHSGSLVSLDQDMQTKVRDLPRAEERYDQKPEQTVCF
 GEDTVP IPTGAEASEQEGKLQAAQK SATGTRRFYCREGKSFQSSGLSKHKRIHTGLKPYECECGKAF
 IGSSALIIHQVHTGEKPYECECGKAFSHSSDLIKHQRTHTGEKPYECDDCGKFTQSCSLEHHRHT
 GEKPYQCNMCPKAFRRSSHLLRHQRTHTGDKDFVPEPYWESQSRVESHWENIETPVSYQCND CERSFSR
 ITSLIEHQKVHTGEKPFECQTCGKGFTRPSYLIHQRRHTGKKT SVTVTPAVHSEVGVQLSLN

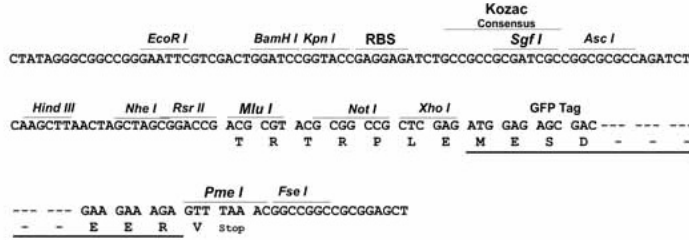
TRTRPLE - GFP Tag - V

Restriction Sites:

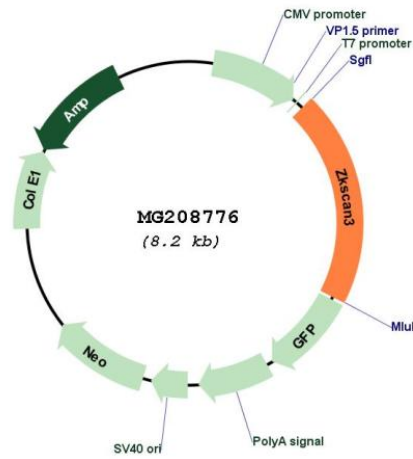
Sgfl-MluI

Cloning Scheme:

Cloning sites used for ORF Shutting:



Plasmid Map:



ACCN:	NM_023685
ORF Size:	2597 bp
OTI Disclaimer:	The molecular sequence of this clone aligns with the gene accession number as a point of reference only. However, individual transcript sequences of the same gene can differ through naturally occurring variations (e.g. polymorphisms), each with its own valid existence. This clone is substantially in agreement with the reference, but a complete review of all prevailing variants is recommended prior to use. More info
OTI Annotation:	This clone was engineered to express the complete ORF with an expression tag. Expression varies depending on the nature of the gene.
Components:	The ORF clone is ion-exchange column purified and shipped in a 2D barcoded Matrix tube containing 10ug of transfection-ready, dried plasmid DNA (reconstitute with 100 ul of water).
Reconstitution Method:	<ol style="list-style-type: none">1. Centrifuge at 5,000xg for 5min.2. Carefully open the tube and add 100ul of sterile water to dissolve the DNA.3. Close the tube and incubate for 10 minutes at room temperature.4. Briefly vortex the tube and then do a quick spin (less than 5000xg) to concentrate the liquid at the bottom.5. Store the suspended plasmid at -20°C. The DNA is stable for at least one year from date of shipping when stored at -20°C.
RefSeq:	NM_023685.3
RefSeq Size:	2495 bp
RefSeq ORF:	1662 bp
Locus ID:	72739
UniProt ID:	Q91VW9
Cytogenetics:	13 A3.1
Gene Summary:	Transcriptional factor that binds to the consensus sequence 5'-[GT][AG][AGT]GGGG-3' and acts as a repressor of autophagy. Specifically represses expression of genes involved in autophagy and lysosome biogenesis/function such as MAP1LC3B, ULK1 or WIPI2. Associates with chromatin at the ITGB4 and VEGF promoters (By similarity).[UniProtKB/Swiss-Prot Function]