

Product datasheet for **MG208774**

Slc22a12 (NM_009203) Mouse Tagged ORF Clone

Product data:

Product Type:	Expression Plasmids
Product Name:	Slc22a12 (NM_009203) Mouse Tagged ORF Clone
Tag:	TurboGFP
Symbol:	Slc22a12
Synonyms:	AI987855; OAT4L; Rst; Slc22a2; URAT1
Mammalian Cell Selection:	Neomycin
Vector:	pCMV6-AC-GFP (PS100010)
E. coli Selection:	Ampicillin (100 ug/mL)



[View online »](#)

ORF Nucleotide Sequence:

>MG208774 representing NM_009203
 Red=Cloning site Blue=ORF Green=Tags(s)

TTTTGTAATACGACTCACTATAGGGCGGCCGGGAATTCGTCGACTGGATCCGGTACCGAGGAGATCTGCC
 GCC**CGGATCGCC**

ATGGCCTTTCCTGAACCTCTGGACCGAGTGGGGGGCTGGGCAGTTCCAGCTCTCCAGACGGTGGCTC
 TGGTGACCCCATTTTGTGGGTACCACCAGAACATGCTGGAGAATTCTCAGCCGAGTTCCCCACCA
 CCGCTGTTGGGTGCCTCTCCTGGACAACAGCACCTCCCAGGCGAGTATCCCTGGGACCTTGACCCCGAT
 GTTCTTCTGGCCGTCTCCATCCCACCTGGTCTGACCAGCAACCCACCAGTGCCTCCGCTTCCGACAAC
 CTCAATGGCAGCTTACAGAGTCCAACGCCACGGCCACCAACTGGAGTGACGCTGCCACTGAGCCATGCGA
 GGATGGCTGGGTTTACGACCATAGCACCTTCAGGTCCACAATCGTGACCACGTGGGACCTGGTATGTAAC
 TCCCAGGCCCTGAGACCCATGGCCAGTCCATCTTCTGGCTGGAATCCTGGTAGGAGCCGAGTGTGTG
 GCCATGCCTCAGATAGGTTTGGGCGCAGAAGGGTGTGACCTGGAGCTATCTTCTGGTGTCCGTGTCCGG
 CACAGCAGCTGCCTTCATGCCACCTTCCCCTCTACTGCCTGTTTCGTTTCTGCTGGCCTCTGCAGTG
 GCAGGTGTATGATGAACACAGCCAGTCTTGTATGGAGTGGACATCAGCCCAGGGTAGCCCTTTGGTGA
 TGACCTTGAACGCCTTGGGCTTCAGCTTGGGCGAGTCTGACAGTTCTGTGGCCTATGGTGTGCGCAG
 CTGGAGGATGCTACAGCTGGCTGTCTTGCCTTCTTCTTCTTCTTTGTTTATTCATGGTGGCTACCA
 GAATCGGCACGCTGGCTCATCACGGTGGCAAGCTGGACCAGGGCCTGCAGGAACACAGAGGGTAGCTG
 CTGTCAACAGGAGGAAGGCAGAGGGAGACAGTGGACCATGGAGGTGCTGCGGTGAGTATGGAGGAGGA
 ACCAAGCAGGGACAAAGCTGGTCCAGTCTGGGCACTCTACTCCACACCTGGGCTGCGCCACCGAACCC
 ATCATCTCCATGCTGTGCTGGTTTGCTTGGCTTACCTTCTACGGCTTGGCCCTTGCCTGCAAGCCC
 TAGGAAGCAATATCTTCTGCTCCAGGCACTATCGGGATTGTGGACTTCCCGGTGAAGACAGGACGCT
 GCTGCTGATCAGCCGCTTGGGCGCGCTTCTGCCAGGTGAGTCTTCTGGTGTCTCCCGGACTCTGCATC
 CTGTCCAACATACTGGTGCCCCATGGGATGGGGTCCCTCGCTCGGCCCTGGCTGTGCTGGGCTGGGCT
 GCCTGGGGGGCGCCTTCCCTGCATCACCATCTTCTCCAGTGAGCTTCCCCACTGTGATCAGGATGAC
 TGCAGTGGGCTCTGCCAGTGGCAGCCGAGGGGAGCCATGCTAGGGCCTTTGGTACGGCTGTGGGT
 GTCTATGGCTCCTGGATGCCCTGCTGGTGTATGGAGTGGTCCAGTGTTAAGTGGCCTAGCTGCACTGC
 TGCTGCCTGAGACCAAGAACTTACCAGTGCCTGACACCATCCAAGACATCCAGAAACAGTCACTGAAGAA
 GGTAACACATGACACACCAGATGGTCCATCCTGATGTCTACCCGGCTG

ACGCGTACGCGGCCGCTCGAG - GFP Tag - GTTTAA

Protein Sequence:

>MG208774 representing NM_009203
 Red=Cloning site Green=Tags(s)

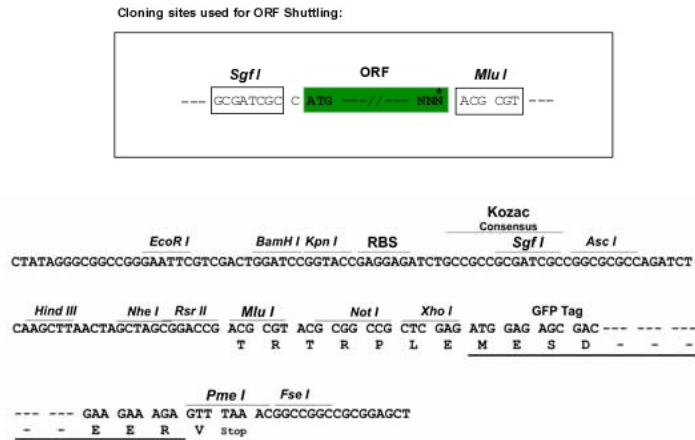
MAFPELLDRVGLGRFQLFQTVALVTPILVWTTQNMLENFSAAVPHHRCWVPLLDNSTSQASIPGDLGPD
 VLLAVSIPPGPDQPHQLRFRQPQWQLTESNATATNWSDAATEPCEDGWYDHSFRSTIVTTWDLVCN
 SQALRPMAQSIFLAGILVGAAVCGHASDRFRRRVLTWSYLLVSVSGTAAAFMPTFFLYCLFRLLASAV
 AGVMMNTASLLMEWTSAQGSPLVMTLNLGFSFGQVLTGSVAYGVRSWRMLQLAVSAPFFLVVYSWWLP
 ESARWLITVGLDQGLQELQRVAAVNRRKAEGDTLTMEVLRSAEPEPSRDKAGASLGLLHTPGLRHRT
 IISMLCWFAGGFTFYGLALDLQALGSNIFLLQALIGIVDFPVKTGSLLLISRLGRRFCQVSFLVPLGLCI
 LSNILVPHGMGVLRSALAVLGLGCLGGAFTCITIFSSELPFTVIRMTAVGLCQVAARGGAMLGPLVRLLG
 VYGSWMPLLVYGVVPLSGLAALLLPETKNLPLPDTIQDIQKQSVKVVTHDTPDGSILMSTRL

TRTRPLE - GFP Tag - V

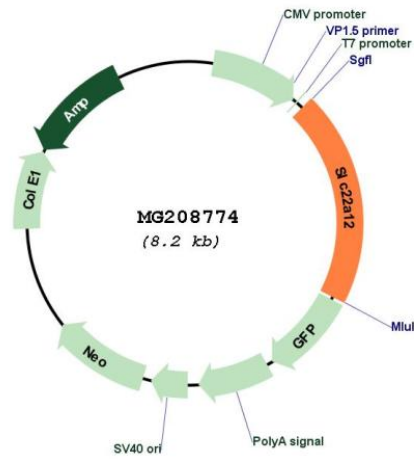
Restriction Sites:

Sgfl-MluI

Cloning Scheme:



Plasmid Map:



ACCN:	NM_009203
ORF Size:	1659 bp
OTI Disclaimer:	The molecular sequence of this clone aligns with the gene accession number as a point of reference only. However, individual transcript sequences of the same gene can differ through naturally occurring variations (e.g. polymorphisms), each with its own valid existence. This clone is substantially in agreement with the reference, but a complete review of all prevailing variants is recommended prior to use. More info
OTI Annotation:	This clone was engineered to express the complete ORF with an expression tag. Expression varies depending on the nature of the gene.
Components:	The ORF clone is ion-exchange column purified and shipped in a 2D barcoded Matrix tube containing 10ug of transfection-ready, dried plasmid DNA (reconstitute with 100 ul of water).
Reconstitution Method:	<ol style="list-style-type: none">1. Centrifuge at 5,000xg for 5min.2. Carefully open the tube and add 100ul of sterile water to dissolve the DNA.3. Close the tube and incubate for 10 minutes at room temperature.4. Briefly vortex the tube and then do a quick spin (less than 5000xg) to concentrate the liquid at the bottom.5. Store the suspended plasmid at -20°C. The DNA is stable for at least one year from date of shipping when stored at -20°C.
RefSeq:	NM_009203.2 , NP_033229.2
RefSeq Size:	2265 bp
RefSeq ORF:	1662 bp
Locus ID:	20521
UniProt ID:	Q8CFZ5
Cytogenetics:	19 A
Gene Summary:	Required for efficient urate re-absorption in the kidney. Regulates blood urate levels. Mediates saturable urate uptake by facilitating the exchange of urate against organic anions or chloride ions.[UniProtKB/Swiss-Prot Function]