

Product datasheet for **MG208763**

Gabra4 (NM_010251) Mouse Tagged ORF Clone

Product data:

Product Type:	Expression Plasmids
Product Name:	Gabra4 (NM_010251) Mouse Tagged ORF Clone
Tag:	TurboGFP
Symbol:	Gabra4
Synonyms:	Gabra-4
Mammalian Cell Selection:	Neomycin
Vector:	pCMV6-AC-GFP (PS100010)
E. coli Selection:	Ampicillin (100 ug/mL)



[View online »](#)

ORF Nucleotide Sequence:

>MG208763 representing NM_010251
 Red=Cloning site Blue=ORF Green=Tags(s)

TTTTGTAATACGACTCACTATAGGGCGGCCGGAATTCGTCGACTGGATCCGGTACCGAGGAGATCTGCC
 GCC**CGCATCGCC**

ATGGTTTCTGTCCAGAAGGTACCCGCGATTGCGCTGTGCTCCGGGTGAGCCTCGCCTCCTGCACTTCC
 TGTGCCTGGCGGCTTGTTTAAACGAATCCCCAGGACAGAAGCTCAAAGGACGAGAAATTGTGCCCGGAAAA
 TTTTACCGTATTCTGGACAGTTTCTGGATGTTATGACAACAGGCTGCGTCTGGATTGGGGTCTCT
 GTTACAGAAGTAAAAGTATATATGTACCAGCTTTGGGCCGTTTCTGATGTTGAAATGGAATACA
 CTATGGATGTGTTCTTACAGACAGATGGATTGACAAAAGACTAAAATATGACGGCCAATTGAAATCTT
 GAGGCTGAATAATATGATGGTACCAAAGTTGGACCCCTGATACTTTCTCAGGAATGGAAGAAATCT
 GTCTCACATAACATGACAGCTCAAATAAGCTTTTGAATTATGAGAAATGGCACTATTTATACACAA
 TGAGACTACCATAAGTGGGAGTGCCCATGAGACTGGTGGATTTTCTATGGATGGTCATGCCTGCC
 TTTGAAATTTGGGAGTTATGCATATCCAAAAGTGAATGATCTACACCTGGACCAAAGGCCCTGAGAAG
 TCAGTGGAGGTGCCAAAGGAGTCTTCTAGCTTAGTTCAATATGACCTATTGGGCAGACTGTATCAAGCG
 AGACTATCAAATCTATTACAGGTGAATACATTGTTATGACGGTTACTTCCACCTCAGACGGAAGATGGG
 CTACTTTATGATTACAGCTATATCCCATGCATCATGACAGTGATTCTTTCTCAAGTTTCTTCTGGATA
 AACAAAGGAGTCTGTTCCAGCTAGAACTGTATTTGGAATAACCACAGTCTCACGATGACCACCCTAAGCA
 TCAGTGCCTCGGCATTCTTTGCCAAAAGTGCCTATGCGACTGCCATGGATTGGTTCATAGCTGTCTGTT
 TGCTTTTGATTTTCGGCTCTTATTGAGTTTGTGCTGTCAACTATTTACCAACATTCAAATGCAGAAA
 GCCAAAAGAAGATACAAAGCTCCCCAGAAGTTCCAGCTGCTCTGTGCTGAAGGAGAAACACACAG
 AAACATCCCTTCAAGATACACATGCCAATTTGAACATGAGGAAAAGAACAATGCCTTGGTCCATTCAGA
 ATCGGATGTCAAAGCAGAAGTGGGAAATCACTCCAGCAAGACCAGCGCTGTCCAGGAGTCTTCT
 GAAGCCACGCCTAAGGCTCACTTAGCTTCCAGTCCAAATCCATTACGACGGCAAATGCAGCTGAGACTA
 TGTCTGCTGCAGCCAGAGGTCTTTCATCTGCAGCATCCCCCTCTCCTCATGGCACATTGCGGCCAGCTTC
 TTTGGGTGAGCTTCCACTCGCCTGCATTTGGATCTAGACTTGGGCGAATTAAGACAACAGTTAATACA
 ACAGGGGCTGCTGGGAATGTGTCAGCCACACCTCCTCCCCCTGCTCCACCGCCTTCTGGATCTGGCACA
 GAAAAATAGACAAATATGCTCGTATTCTTTCCAGTACATTTGGAGCATTTAACATGGTCTACTGGGT
 TGTTTATTATCTAAGGACACCATGGAGAAATCAGAAAGTCTAATG

ACGCGTACGCGGCCGCTCGAG - GFP Tag - GTTTAA

Protein Sequence:

>MG208763 representing NM_010251
 Red=Cloning site Green=Tags(s)

MVSVQKVPALALCSGVSLALLHFLCLAACLNESPGQNSKDEKLCPENFTRILDSLDDGYDNRLRPGFGGP
 VTEVKTDIYVTSFGPVSDVEMEYTMDFFRQTWIDKRLKYDGPVIEILRLNMMVTKVWTPDFFFRNGKKS
 VSHNMTAPNKLFRIMRNGTILYTMRLTISAECPMRLVDFPMDGHACPLKFGSYAYPKSEMIYTWTKGPEK
 SVEVPKESSSLVQYDLIGQTVSSETIKSITGEYIVMTVYFHLRRKMGYFMIQTYIPCIMTVILSQVSWFI
 NKESVPARTVFGITTVLMTTSLISARHSLPKVSYATAMDWFIAVCFVFSALIEFAAVNYFTNIQMOK
 AKKKISKPPPEVPAAPVLKEKHTETSLQNTANLNMKRTNALVHSESDVKSRTVEGNHSSKTSVQESS
 EATPKAHLASSPNPFSRANAETMSAAARGLSAASPSPHGTLRPASLGSASTRPAFGSRLGRIKTTVNT
 TGAAGNVSATPPPPAPPPSGSGTSKIDKYARILFPVTFGAFNMVYVVVYLSKDTMEKSESLM

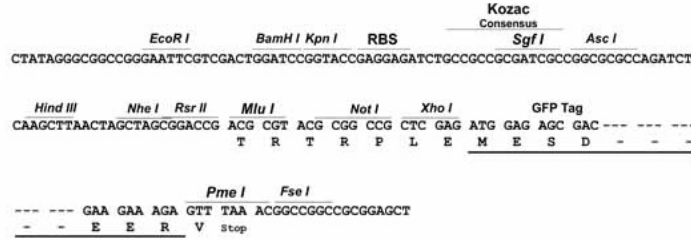
TRTRPLE - GFP Tag - V

Restriction Sites:

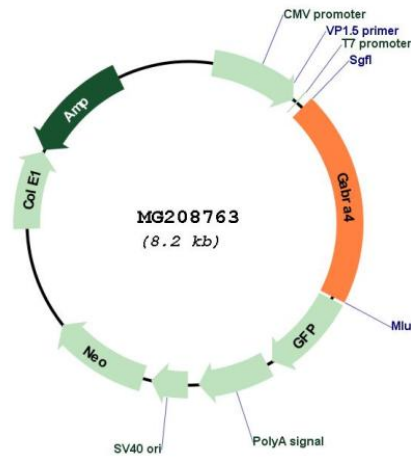
Sgfl-Mlul

Cloning Scheme:

Cloning sites used for ORF Shutting:



Plasmid Map:



ACCN:	NM_010251
ORF Size:	1656 bp
OTI Disclaimer:	The molecular sequence of this clone aligns with the gene accession number as a point of reference only. However, individual transcript sequences of the same gene can differ through naturally occurring variations (e.g. polymorphisms), each with its own valid existence. This clone is substantially in agreement with the reference, but a complete review of all prevailing variants is recommended prior to use. More info
OTI Annotation:	This clone was engineered to express the complete ORF with an expression tag. Expression varies depending on the nature of the gene.
Components:	The ORF clone is ion-exchange column purified and shipped in a 2D barcoded Matrix tube containing 10ug of transfection-ready, dried plasmid DNA (reconstitute with 100 ul of water).
Reconstitution Method:	<ol style="list-style-type: none">1. Centrifuge at 5,000xg for 5min.2. Carefully open the tube and add 100ul of sterile water to dissolve the DNA.3. Close the tube and incubate for 10 minutes at room temperature.4. Briefly vortex the tube and then do a quick spin (less than 5000xg) to concentrate the liquid at the bottom.5. Store the suspended plasmid at -20°C. The DNA is stable for at least one year from date of shipping when stored at -20°C.
RefSeq:	NM_010251.2 , NP_034381.1
RefSeq Size:	4123 bp
RefSeq ORF:	1659 bp
Locus ID:	14397
UniProt ID:	Q9D6F4
Cytogenetics:	5 C3.2
Gene Summary:	GABA, the major inhibitory neurotransmitter in the vertebrate brain, mediates neuronal inhibition by binding to the GABA/benzodiazepine receptor and opening an integral chloride channel.[UniProtKB/Swiss-Prot Function]