

Product datasheet for **MG208752**

Gpr107 (NM_178760) Mouse Tagged ORF Clone

Product data:

Product Type:	Expression Plasmids
Product Name:	Gpr107 (NM_178760) Mouse Tagged ORF Clone
Tag:	TurboGFP
Symbol:	Gpr107
Synonyms:	9930033D15Rik; AI790205; C530034M11; mKIAA1624
Mammalian Cell Selection:	Neomycin
Vector:	pCMV6-AC-GFP (PS100010)
E. coli Selection:	Ampicillin (100 ug/mL)



[View online »](#)

ORF Nucleotide Sequence:

>MG208752 representing NM_178760
 Red=Cloning site Blue=ORF Green=Tags(s)

TTTTGTAATACGACTCACTATAGGGCGGCCGGAATTCGTCGACTGGATCCGGTACCGAGGAGATCTGCC
 GCC**CGCATCGCC**

ATGGCCGTCCCGGTACCCCTCGGCCGCTTCGGCTCCTTCTGCCTGCGGCTGCTACGACTGCTGGCGTTGC
 TGGAGCTGCTGGTCCACCCCGTCTTGGCCGCGTCCATCACCTGGCGCTCAAAGATGATGTGCGGCATAA
 AGTCCATCTCAACACCTTCGGTCTTCAAGGATGGGTACATGGTGGTCAACGTCAGCAGCCTCTCTGTG
 AACGAGCCTGAGGGAGCCACGGACAAGGATGCTGAGATCGGATTCAGTCTGGATCGGACTAAGAAGCATG
 GCTTTTCTTCTACCTGGATGAAGATGTGAATTACTGTATTTAAAAAAGAAGTCCATGTCTTCTGTAC
 TCTTGTCACTTAGACATCTCTGGAAGCATAGTCAAGGTCAGATCCCACCAGAAGCTGGTAAGCAGTTA
 CCAGAGATTGTCTTCAGCAAGGATGAGAAAATCCTGAGTCAGAGCCAGGAGCCTGCTGTCAGCTCCAACC
 CCAAAGACAGTGAGGCTCGGAGAACCCTCGATGGTTTCAAGGCTGGACGAAGTACAGTGGACTCAAAGGC
 TATCACAGAGCGATCCTTCTCAATTCACAAGAATGACGGGGTGGTCTCATTTCAGTCTCTTTAACATC
 AGCACCGATGACCAGGAAGGCCTCTACAGCCTTACTTCCACAAGTGTCTAGGCAACAACGTGAAGCCTG
 GTGAACAGGCCTCATTACGCCTGAATATTGCTATCACAGAGAAGAACCTAACAGCTACCTCTGCCGG
 GGAAATCCCTCTCCCAAGTTATATGTTTCCATGGCCTTGTCTTCTTCTGTCTGGGACCATTGGATT
 CACATCCTTCGTAAGAGAAGGAATGATGTATTTAAAATCACTGGTTGATGGCCGCCCTTCTTTACCA
 AGTCTCTCTCGTTGGTGTTCATGCAATCGACTACCACTACATCTCCTCGAGGGCTTCCGATTGAAGG
 CTGGGCTGTTGTATACTACATAACTCACCTGCTAAAGGGCGCACTCCTGTTATCACCATCGCCCTCATC
 GGCATGGCTGGCCCTCATCAAGCACATCCTGTCTGATAAAGACAAGAAGATCTTCATGATTGTATCC
 CGCTCCAGGCTCGGCAATGTGGCCTACATCATAGAGTCCACTGAGGAGGGCACAAGTGTGATGG
 CCTATGGAAGGACTCTCTGTTCCCTGGTTGACTTGTCTTGTCTGGCGCCATCCTCTTCCAGTGGTGTGG
 TCAATCAGGCATTTACAAGAAGCCTCCGCCACAGATGGAAGAGCTGCCATTAAGTACGGAAGCTGAGGC
 TTTTCAGACATTACTACGCTTGTATTGTGTGCTACATCTACTTTACCAGGATCATCGCCTTCTTCTCAA
 GTTTGCTGTTCCATTCCAGTGGAAAGTGGCTCTACCAGCTGCTGGATGAAACAGCCACGCTGGTGTCTTT
 GTCCTGACGGGTATAAATTTGCCCGAGCTTCAAGATAACCCCTACCTGCAGCTCTCTCAGGAAGATGATG
 ACCTGGAGATGGAGTCCGTAGTGACGACATCGGGTGTGATGGAGAATATGAAGAAGGTGAAGAAAGTGAG
 CAACGGTGTGTGGAGCCCCAGGCAGCTGGGAAGGCACCGCG

ACGCGTACGCGGCCGCTCGAG - GFP Tag - GTTTAA

Protein Sequence:

>MG208752 representing NM_178760
 Red=Cloning site Green=Tags(s)

MAVPVPLGRFGSFCLRLLRLLALLELLVHPVLGRVHHLALKDDVRHKVHLNTFGFFKDGVMVNVSSLV
 NEPEGATDKDAEIGFSLDRTKNDGFSSYLDEDVNYCILKKSMSVTLVILDISGSIVKVRSPPEAGKQL
 PEIVFSKDEKILSQSQEPVSSNPKDSEARRTLDFGKAGRSTVDSKAITERSFSIHKNDGVVSFQFFFNI
 STDDQEGLYSLYFHKCSGNVVKPGEQASFSLNIAITEKNPNSYLSAGEIPLPKLYVSMALFFLSGTIWI
 HILRKRNRNDVFKIHWLMAALPFTKLSLVFHAIDYHYISSQGFPFIEGWAVVYIITHLLKGALLFITIALI
 GTGWAFIKHILSDKDKKIFMIVIPLQVLANVAYIIIESTEEGTTEYGLWKDSLFLVDLLCCGAILFPVW
 SIRHLQEASATDGKAAINLAKLRLFRHYVYLIVCYIYFTRIIAFLLLKFAVPFQWKWLYQLLDETALVFF
 VLTGYKFRPASDNPYLQLSQEDDDLEMESVVTTSVMENMKVKVKSNGAVEPQGSWEGTA

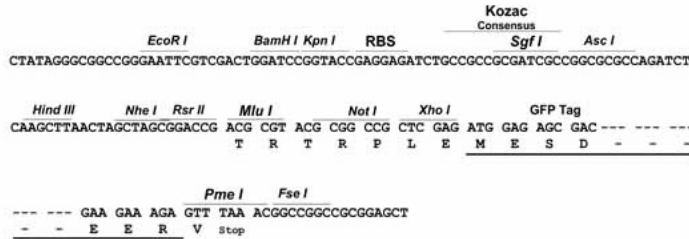
TRTRPLE - GFP Tag - V

Restriction Sites:

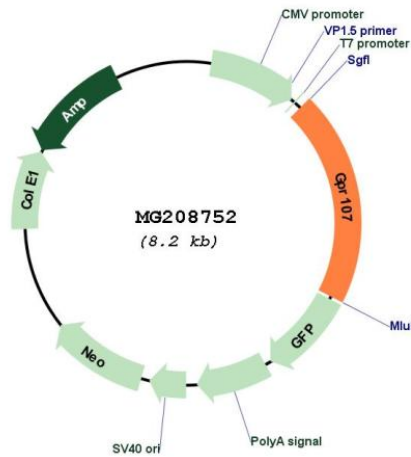
Sgfl-MluI

Cloning Scheme:

Cloning sites used for ORF Shutting:



Plasmid Map:



ACCN:	NM_178760
ORF Size:	1653 bp
OTI Disclaimer:	The molecular sequence of this clone aligns with the gene accession number as a point of reference only. However, individual transcript sequences of the same gene can differ through naturally occurring variations (e.g. polymorphisms), each with its own valid existence. This clone is substantially in agreement with the reference, but a complete review of all prevailing variants is recommended prior to use. More info
OTI Annotation:	This clone was engineered to express the complete ORF with an expression tag. Expression varies depending on the nature of the gene.
Components:	The ORF clone is ion-exchange column purified and shipped in a 2D barcoded Matrix tube containing 10ug of transfection-ready, dried plasmid DNA (reconstitute with 100 ul of water).
Reconstitution Method:	<ol style="list-style-type: none">1. Centrifuge at 5,000xg for 5min.2. Carefully open the tube and add 100ul of sterile water to dissolve the DNA.3. Close the tube and incubate for 10 minutes at room temperature.4. Briefly vortex the tube and then do a quick spin (less than 5000xg) to concentrate the liquid at the bottom.5. Store the suspended plasmid at -20°C. The DNA is stable for at least one year from date of shipping when stored at -20°C.
RefSeq:	NM_178760.4 , NP_848875.2
RefSeq Size:	3926 bp
RefSeq ORF:	1656 bp
Locus ID:	277463
UniProt ID:	Q8BUV8
Cytogenetics:	2 B
Gene Summary:	Has been proposed to act as a receptor for neuronostatin, a peptide derived from the somatostatin/SST precursor (By similarity). Involved in blood sugar regulation through the induction of glucagon in response to low glucose (By similarity).[UniProtKB/Swiss-Prot Function]