

Product datasheet for **MG208746**

Cpsf6 (NM_001013391) Mouse Tagged ORF Clone

Product data:

Product Type:	Expression Plasmids
Product Name:	Cpsf6 (NM_001013391) Mouse Tagged ORF Clone
Tag:	TurboGFP
Symbol:	Cpsf6
Synonyms:	4733401N12Rik; AI256641; CFIM; CFIM68; HPBR11-4; HPBR11-7
Mammalian Cell Selection:	Neomycin
Vector:	pCMV6-AC-GFP (PS100010)
E. coli Selection:	Ampicillin (100 ug/mL)



[View online »](#)

ORF Nucleotide Sequence:

>MG208746 representing NM_001013391
 Red=Cloning site Blue=ORF Green=Tags(s)

TTTTGTAATACGACTCACTATAGGGCGGCCGGGAATTCGTCGACTGGATCCGGTACCGAGGAGATCTGCC
 GCC**GCGATCGCC**

ATGGCGGACGGTGTGGACCACATAGACATTTACGCGGATGTGGGTGAAGAGTTCAACCAGGAAGCAGAAT
 ATGGTGGACATGATCAGATAGATTTGTATGATGATGTCATCTCTCCATCTGCAAATAATGGCGATGCCCC
 AGAAGATCGCGACTACATGGATACTCTCCACCAACTGTTGGTATGATGTGGGTAAAGGAGCCGACCA
 AACGTTGTGTACTTACTGGAAGAGAATCGCATTGTATTTGAAAATCTAACATGGTGGACAACAG
 ATGAGGACCTAACTGAGGCCGTTCTTTGGGAGTAAATGATTTTGGAGATAAAATCTTTGAAAA
 TCGGGCAAATGGACAATCAAAGGGATTTGCCCTTGTGGTGTGGATCTGAAGCATCTTCCAAAAAGTTA
 ATGGATCTTTGCCTAAAAGAGAACTTCATGGTCAGAGTCCTGTTGTAACCTCATGCAATAAGCAGTTCC
 TGAGTCAATTTGAAATGCAATCCAGGAAAACACACAGTCAGGACAGATGTCTGGGAAGGGAAAGCCGG
 TCCTCCAGGAGGGGTTACGCGCAGCGTTTCTCAAGTGGTAGAGGACGGGGCCGTTTCCAGGGGCT
 GTTCTGGTGGGACAGATTTCTGGGCCAGCAGGACCAGGAGGGCCACCTCCACCTTTTCCAGCTGGAC
 AAACCTCCACCACGTCCACCTTAGGCCACCTGGCCACCTGGTCCACCAGGTCCTCCACCTCCTGGTCA
 GGTCTGCCACCTCCTTAGCAGGACCTCTAACCGAGGAGACCGCCCTCCACCACAGTTCTTTTTCT
 GGACAACCTTTGGGCGAGCTCCGCTGGGTCCACTTCTCTGGGCTCCACCTCCAGTTCAGGGCTACG
 GCCCCCTCCAGTCCACCGCTCCACAGCAGGGACCCTCCACCTCCAGGCCCTTTCCACCTCGCCC
 ACCAGTCCACTAGGGCTCCCCCACACTTGCCTCCTCCACATCTTCCGGGACCACCTCCAGGTGCC
 CCGCCACCAGTCCACATGTGAATCCTGCTTTTTTCTCCACCAACTAATAGTGGCATGCAACATCAG
 ATATCGAGGTCACCAACACAGACCCATATGGCCGACCTCCCCATATGATAGGGGTACTACGGTCC
 CCTGGGAGGAAATGGATACTGCAAGAACACCTCTGAGTGAAGCTGAGTTTGAAGAAATCATGAATAGA
 AATCGGGCAATCTCAAGCAGTGCTATTTCAAGAGCTGTGCTGACGCTAGTGTGGTATTATGGGAGTG
 CTATTGAAACATTGGTAACAGCAATTTCTTAATTAACAATCCAAAGTCTCTGCAGATGATCGTTGCAA
 AGTTCTTATTAGCTCTCTGCAGGATTGCCTTATGGAATCGAGTCCAAGTCTATGGGTCTGGATCCAGA
 CGTGAACGATCAAGAGAACGGGACCATAGTAGATCACGGGAAAAGAGTCGTCGCCATAAATCTCGGAGTA
 GAGATCGCCACGATGACTATTACAGAGAGAGAAGCAGAGAACGAGAGAGACACCGGGATCGGGACCGGA
 CCGTGACCGAGAGCGTGACCGAGAGCGAGAATACCGTCATCGT

ACGCGTACGCGGCCGCTCGAG – GFP Tag – GTTTAA

Protein Sequence:

>MG208746 representing NM_001013391
 Red=Cloning site Green=Tags(s)

MADGVDHIDIYADVGEFNEAEYGGHDQIDL YDDVISPANNGDAPEDRDYMDTL PPTVGDVVGKGAAP
 NVVYTYTGKRIALYIGNLTWTTDEDLTEAVHSLGVNDILEIKFFENRANGQSKGFALVGVGSEASSKLL
 MDLLPKRELHGQSPVVTPCNKQFLSQFEMQSRKTTQSGQMSGEGKAGPPGGGSRAAFPGGRGRGRFPGA
 VPGDRFPGPAGPGPPPPFAGQTPPRPPLGPPGPPGPPPPGQVLPPLAGPPNRGDRPPPPVLP
 GQPFQPPPLGPPPPPPVPGYPPPPPPQGGPPPPGPFPPRPPGPLGPPLTAPPPLPGPPPGA
 PPPAPHVNPAPFPPTNSGMPTSDSRGPPPTDPYGRPPPYDRGDYGGPREMDTARTPLSEAEFEEIMNR
 NRAISSAISRAVSDASAGDYGSAIETLVTAISLIKQSKVSADDRCKVLISLQDCLHGIESKSYGSGSR
 RERSRERDHSRSREKSRHRKSRSRDRHDDYYRERSRERERHRDRDRDRDRERDREREYRHR

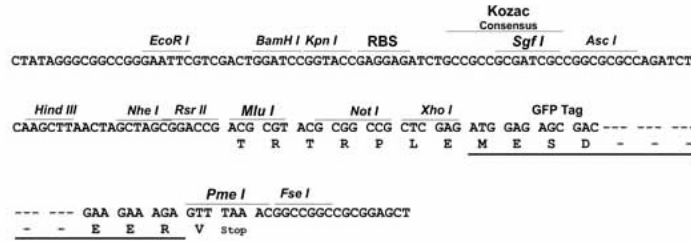
TRTRPLE – GFP Tag – V

Restriction Sites:

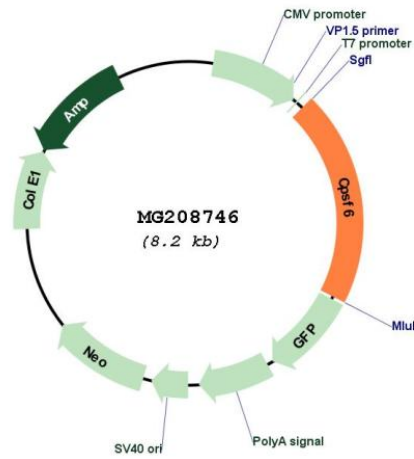
Sgfl-MluI

Cloning Scheme:

Cloning sites used for ORF Shutting:



Plasmid Map:



ACCN:	NM_001013391
ORF Size:	1653 bp
OTI Disclaimer:	The molecular sequence of this clone aligns with the gene accession number as a point of reference only. However, individual transcript sequences of the same gene can differ through naturally occurring variations (e.g. polymorphisms), each with its own valid existence. This clone is substantially in agreement with the reference, but a complete review of all prevailing variants is recommended prior to use. More info
OTI Annotation:	This clone was engineered to express the complete ORF with an expression tag. Expression varies depending on the nature of the gene.
Components:	The ORF clone is ion-exchange column purified and shipped in a 2D barcoded Matrix tube containing 10ug of transfection-ready, dried plasmid DNA (reconstitute with 100 ul of water).
Reconstitution Method:	<ol style="list-style-type: none">1. Centrifuge at 5,000xg for 5min.2. Carefully open the tube and add 100ul of sterile water to dissolve the DNA.3. Close the tube and incubate for 10 minutes at room temperature.4. Briefly vortex the tube and then do a quick spin (less than 5000xg) to concentrate the liquid at the bottom.5. Store the suspended plasmid at -20°C. The DNA is stable for at least one year from date of shipping when stored at -20°C.
RefSeq:	NM_001013391.2
RefSeq Size:	3012 bp
RefSeq ORF:	1656 bp
Locus ID:	432508
UniProt ID:	Q6NVF9
Cytogenetics:	10 D2
Gene Summary:	<p>Component of the cleavage factor Im (CFIm) complex that functions as an activator of the pre-mRNA 3'-end cleavage and polyadenylation processing required for the maturation of pre-mRNA into functional mRNAs. CFIm contributes to the recruitment of multiprotein complexes on specific sequences on the pre-mRNA 3'-end, so called cleavage and polyadenylation signals (pA signals). Most pre-mRNAs contain multiple pA signals, resulting in alternative cleavage and polyadenylation (APA) producing mRNAs with variable 3'-end formation. The CFIm complex acts as a key regulator of cleavage and polyadenylation site choice during APA through its binding to 5'-UGUA-3' elements localized in the 3'-untranslated region (UTR) for a huge number of pre-mRNAs. CPSF6 enhances NUDT21/CPSF5 binding to 5'-UGUA-3' elements localized upstream of pA signals and promotes RNA looping, and hence activates directly the mRNA 3'-processing machinery. Plays a role in mRNA export.</p> <p>[UniProtKB/Swiss-Prot Function]</p>