

## Product datasheet for **MG208743**

### 1100001H23Rik (BC019793) Mouse Tagged ORF Clone

#### Product data:

Product Type:	Expression Plasmids
Product Name:	1100001H23Rik (BC019793) Mouse Tagged ORF Clone
Tag:	TurboGFP
Symbol:	1100001H23Rik
Synonyms:	1100001H23Rik
Mammalian Cell Selection:	Neomycin
Vector:	pCMV6-AC-GFP (PS100010)
E. coli Selection:	Ampicillin (100 ug/mL)



[View online »](#)

**ORF Nucleotide Sequence:**

>MG208743 representing BC019793  
 Red=Cloning site Blue=ORF Green=Tags(s)

TTTTGTAATACGACTCACTATAGGGCGGCCGGGAATTCGTCGACTGGATCCGGTACCGAGGAGATCTGCC  
 GCC**GCGATCGCC**

ATGTGCCACCGCAGCCCTGGCAGGAGCCTCAGGCCCCATCGCCGCTGCTGCTGCTGCCATTGCTGC  
 TGCAAGCCTCCCTGGGCGCCGGTCTGCCAGCCAGAGCGACCCAAACAGGAGTCCACTGTGCAACAGCATA  
 CTGGTCCCTGAATCCAAGAAAGTGAAATCAAGACGGTACTGGACAAGAATGGGACGCCTACGGCTAC  
 TACAATGACTCCATTAACACAGGCTGGGGCATCCTGGAGATCAGAGCTGGTACGGCTCTCAGGTCC  
 TGTCCAATGAGATCATCATGTTTCTGGCTGGCTACCTCGAGGGCTACCTACTGCTCTACACATGTACGA  
 CCACTTCAAAACCTGTACCCACAGCTGATCAAGAATCCTTCCATTGTGAAAAAGTGAAGACTTCATG  
 GAGAAGCAAGAAATGTGGACTAGGCAAAACATCAAAGCGCAGAAGGATGACCCATTCTGGAGACACCCG  
 GCTATGTGGTACCCAGCTCGACGGCTGTATCTTGGAGCTCAGAAAAGGGCTTCAGAAGAGAAAAATAA  
 GCCCATGACAATGTTCCAAATTCAGTTCCTGAACGCCGTTGGTGACCTGTTGGACCTTATCCCTCCCTA  
 TCTCCACAAAAAGCAGCAGCATGATGAAGTTTAAAGTTTGGGAAATGGGCCACTGTTCCGCTCTTATTA  
 AGGTCCTTCTGGATTTGAAAACATCTATTTTGCCCACTCAAGCTGGTACACATATGCAGCCATGCTCAG  
 GATCTATAAACATTGGGACTTCAACATCAAGGACAAAATACACCCTCAGCAAAACGGCTGTCTTTCAGCAGT  
 TATCCAGGGTCTTGGAGTCTCTGGATGACTTTTATATCTCAGCAGTGGCCTGATATTGCTGCAGACCA  
 CCAACAGTGTGTACAATAAGACCCTGCTGAAGCAGGTGGTGCCTCAAGACTCTCCTGGCCTGGCAAAGAGT  
 CCGTGTGGCCAACATGATGGCCGAGGGTGGTAAGGAGTGGGCACAGATATTTTCAAAGCACAACTCTGGT  
 ACCTACAACAACCAAGTACATGGTCTGGACCTGAAGAAGTGACCATCAATAGGAGCCTGGACAAAGGCA  
 CTCTCTATATTGTGGAGCAATCCCTACATATGTAGAATACTCCGATCAAACCAATGCTTAAGAAAAAGG  
 ATACTGGGCTTCTATAATATCCCTTTCCACAAAACAATCTACAACCTGGAGTGGCTACCCTCTGCTGGTT  
 CACAAGCTGGGCTTGGACTACTTATGACTTAGCTCCACGTGCCAAAATCTTCAGGCGTGACCAAGGGA  
 ACGTGACGGACATGGCCTCCATGAAATATATCATGCGATAACAACAATTATAAAGAGGACCCCTACAGCAA  
 GGGGGATCCCTGCAGTACCATCTGCTGTCGTGAGGACCTGAATGGAGCCAGTCCAAGCCCTGGAGGATGC  
 TATGACACCAAGGTGGCAGACATCTTCTTGCATCTCAGTATAAAGCCTATGCCATTAGTGGTCCCACGG  
 TACAAGATGGACTCCCGCCTTTAACTGGAATCGGTTCAATGAAACGCTCCATCGGGGGATGCCAGAAGT  
 CTTTGACTTAAATTTGTTACCATGAAACCAATTTTGTCA

**ACGCGTACGCGGCCGCTCGAG** - GFP Tag - GTTTAA

**Protein Sequence:**

>MG208743 representing BC019793  
 Red=Cloning site Green=Tags(s)

MCHRSPGRSLRPPSPLLLLLPLLLQPPWAAGAASQSDPTGVHCATAYWSPESKKVEIKTVLDKNGDAYGY  
 YNDSIKTTGWGILEIRAGYGSQVLSNEIIMFLAGYLEGYLTALHMYDHFNLYPQLIKNPSIVKKVQDFM  
 EKQEMWTRQNIKAQKDDPFWRHTGYVVTQLDGLYLGAQKRASEEIKPMTMFQIQFLNAVGLDLLDIPSL  
 SPTKSSSMMKFKIWEMGHCSALIKVLPGFENIYFAHSSWYTYAAMLRIYKHWFNFKDKYTLKRLSFSS  
 YPGFLESLLDDFYILSSGLILLQTNSVYNKTLKQVVPKTLWQVRVANMMAEGGKEWAQIFSKHNSG  
 TYNNQYMLDLKKTINRSLDKGLYIIVEQIPTVEYSDQTNVLRKGYWASYNIPFHKTINWSGYPLLV  
 HKLGLDYSYDLAPRAKIFRRDQGNVTDMAKMYIMRYNNYKEDPYSGKGPCSTICCREDLNGASPSGGC  
 YDTKVADIFLASQYKAYAISGPTVQDGLPPFNWNRNETLHRGMPEVDFDFNFVTMKPILS

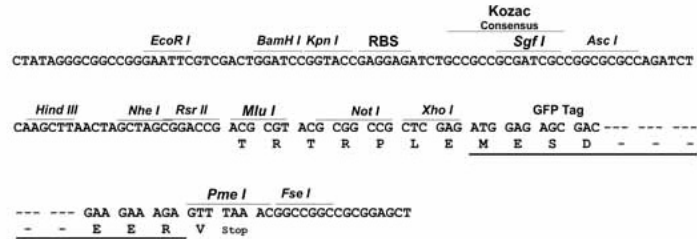
**TRTRPLE** - GFP Tag - V

**Restriction Sites:**

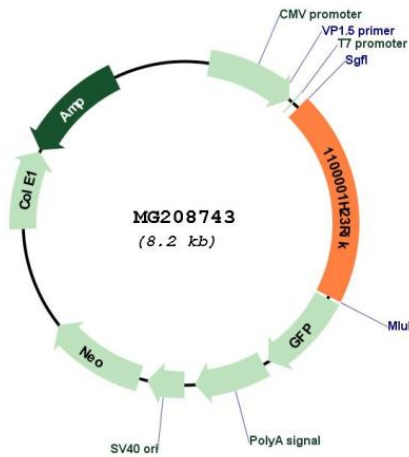
Sgfl-MluI

Cloning Scheme:

Cloning sites used for ORF Shutting:



Plasmid Map:



<b>ACCN:</b>	BC019793
<b>ORF Size:</b>	1652 bp
<b>OTI Disclaimer:</b>	The molecular sequence of this clone aligns with the gene accession number as a point of reference only. However, individual transcript sequences of the same gene can differ through naturally occurring variations (e.g. polymorphisms), each with its own valid existence. This clone is substantially in agreement with the reference, but a complete review of all prevailing variants is recommended prior to use. <a href="#">More info</a>
<b>OTI Annotation:</b>	This clone was engineered to express the complete ORF with an expression tag. Expression varies depending on the nature of the gene.
<b>Components:</b>	The ORF clone is ion-exchange column purified and shipped in a 2D barcoded Matrix tube containing 10ug of transfection-ready, dried plasmid DNA (reconstitute with 100 ul of water).
<b>Reconstitution Method:</b>	<ol style="list-style-type: none"><li>1. Centrifuge at 5,000xg for 5min.</li><li>2. Carefully open the tube and add 100ul of sterile water to dissolve the DNA.</li><li>3. Close the tube and incubate for 10 minutes at room temperature.</li><li>4. Briefly vortex the tube and then do a quick spin (less than 5000xg) to concentrate the liquid at the bottom.</li><li>5. Store the suspended plasmid at -20°C. The DNA is stable for at least one year from date of shipping when stored at -20°C.</li></ol>
<b>RefSeq:</b>	<a href="#">BC019793</a> , <a href="#">AAH19793</a>
<b>RefSeq Size:</b>	1940 bp
<b>RefSeq ORF:</b>	1652 bp
<b>Locus ID:</b>	66857
<b>Cytogenetics:</b>	6 G1
<b>Gene Summary:</b>	Exhibits weak phospholipase activity, acting on various phospholipids, including phosphatidylcholine, phosphatidylinositol, phosphatidylethanolamine and lysophospholipids. However, in view of the small size of the putative binding pocket, it has been proposed that it may act rather as an amidase or a peptidase (By similarity).[UniProtKB/Swiss-Prot Function]