

## Product datasheet for **MG208742**

### **Tnk2 (BC031168) Mouse Tagged ORF Clone**

#### **Product data:**

Product Type:	Expression Plasmids
Product Name:	Tnk2 (BC031168) Mouse Tagged ORF Clone
Tag:	TurboGFP
Symbol:	Tnk2
Synonyms:	Ack, Cdgjp, ACK1, MGC37479
Mammalian Cell Selection:	Neomycin
Vector:	pCMV6-AC-GFP (PS100010)
E. coli Selection:	Ampicillin (100 ug/mL)



[View online »](#)

**ORF Nucleotide Sequence:**

>MG208742 representing BC031168  
 Red=Cloning site Blue=ORF Green=Tags(s)

TTTTGTAATACGACTCACTATAGGGCGGCCGGAATTCGTCGACTGGATCCGGTACCGAGGAGATCTGCC  
 GCC**CGGATCGCC**

ATGGACCCTCTGACCTGCTGAGTGTGGAAGTACGACCTCCCGACCCACCCAGCACCTAGGACGGGTGA  
 AAAAGCCAACATACGACCTGTGAGTGAGGACCCAGACCCCTGTCCAGCGACTTCAAGAGGCTTGGCCT  
 GAGGAAGCCAGCCCTGCCTCGAGGGCTGTGGCTGGCAAAGCCCTCAGCCCGAGTGCCAGGACCAAGGCA  
 GACCGCAGCAGTGGGGTGGAGTACACTCATCGACTTCGGTGAGGAGCCTGTGGTCCCAACCCCTCGGC  
 CCTGTGCACCCTCCTGGCACAGTTGGCCATGGATGCCTGCTCCTTGTGGACAAGACACCACACAGAG  
 CCCCACACGGGACTGCCACGACCTTTACACCCACCCCTGTGGTAGACTGGGACGCGCTCCGCTGCC  
 CCGCCCCCTGCCTATGACGACGTGGCCAGGATGAGGATGACTTTGAGGTCTGCTCCATCAACAGCAGCG  
 TAGTAGGTGCAGGCTCCCTGCTGGCCCTAGCCAAGGCGAGACCAATTACGCCTTTGTACCTGAGCAGGC  
 GCAGATGCCCCCTGCCCTGGAGGATAACCTGTTCTTCCACCCAGGGCGGAGGCAAGCCGCCAGCTCA  
 GTGCAGACTGCAGAGATTTCCAGGCACTGCAGCAGGAGTGTATGCGGCAGCTACAGTCCCCACTGGCC  
 AGCTGACCCCTCCCGACCCAGGAGGTGATGACAAGCCCAAGGTGCCACCCGGGTACCTATTTCCCC  
 TCGGCCACGCGTCCACGTGTGGAGTATCTCCAGCTCCCTCGGGTGAGGAAGAGACAAGCCGGTGGCCT  
 GGACCTGCCTCGCCCCCGAGTGCCTCCCGGGAACCTCTGTCTCCTCAAGGTTCAAGGACCCCAAGCC  
 CCCTAGTGCCACCTGGCAGCTCTCCACTACCGCATCGGCTCTCTAGCTCACCTGGAAGACCATGCCAC  
 CACTCAAAGCTTTGCCTCAGACCCTAAGTATGCCACTCCACAAGTATCCAGGCTCCTGGCCACGGGCA  
 GGCCCCGTGATCCTGCCATTGTCGCGATGGCAGGAAGGTGAGCAGCACTCATTACTACCTGCTGCTG  
 AGCGCCCTCCTTACCTGGAACGTATCAGCGCTTCTGCGGGAGGCCAGAGCCCGGAAGAGCCGCGCC  
 CCTGCCCGTGCCTCGCTGTTGCCCGCCAGTACTCCAGCCCTGCTGCCCCACTGCCACCGTCA  
 CCTATGCCTCAGGCCGCCAGACCCAAAGGCCAATTCTCCACCAATAACAGCAACCCAGGGGCACGGC  
 CACCATCCCTGAGGGCCGCGGCTCGGCTGCCACAGAGGGGCTGCCAGGGGACGGGCAAGAGGCTGCTCG  
 GCCAGCAGACAAGGTCCAGATGCTGCAGGCCATGGTGCATGGGGTGACCACAGAGGAGTCCAGGCGGCC  
 CTGCAGAGCCACAGCTGGAGTGTTCAGAGGGCTGCCAGTATCTGAAGGTGGAGCAGCTCTTTGGGCTGG  
 GTCTTCGCCACGGGTGGAGTCCACAAGGTCTAGAGATGTTGACTGGAACCTAGAGCAAGCCGCGCTG  
 TCACCTTCTGGGCTCCTGTGCCCTGCTCATACAAGCGC

AGCGGACCGACGCGTACGCGGCCGCTCGAG - GFP Tag - GTTTAA

**Protein Sequence:**

>MG208742 representing BC031168  
 Red=Cloning site Green=Tags(s)

MDPPDLLSVELSTRPTQHLGRVKKPTYDVPSEDPDPLSSDFKRLGLRKPALPRGLWLAKPSARVPGTKA  
 DRSSGGEVTLIDFGEEPVPTRPCAPSLAQLAMDACSLLDKTPPQSPTRALPRPLHPTPVVDWARPLP  
 PPPAYDDVAQDEDDFEVCSINSTLVGAGLPAGPSQGETNYAFVPEQAQMPPALEDNLFPPQGGKPPSS  
 VQTAEIFQALQQECMRQLQVPTGQLTPSPTPGDDKQVPPRVPIPPRTRPRVELSPAPSGEETS  
 GPASPPRVPPREPLSPQGSRTSPLVPPGSSPLPHRLSSSPGKTMPTTQSFASDPKYATPQVIQAPGPR  
 GPCILPIVRDGRKVSSTHYLLPERPPYLERYQRFLREAQSPEEPAALPVPLLPPSTPAPAAPTATVR  
 PMPQAAPDPKANFSTNNSNPGARPPSLRAAARLPQRGCPGDGQEAARPADKVQMLQAMVHGVTTEECQAA  
 LQSHSWSVQRAAQYLKVEQLFGLGLRPRVECHKVLEMFWDWNLEQAGCHLLGSCGPAHHR

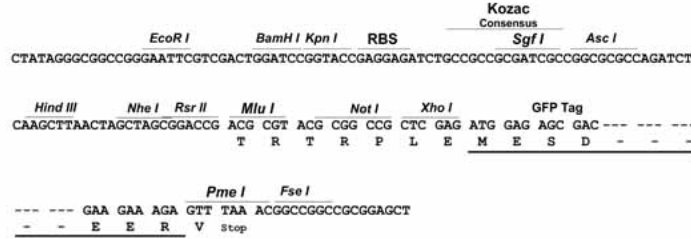
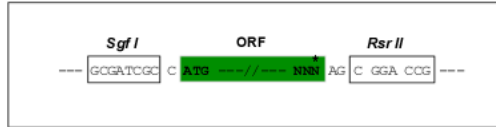
SGPTRRRLE - GFP Tag - V

**Restriction Sites:**

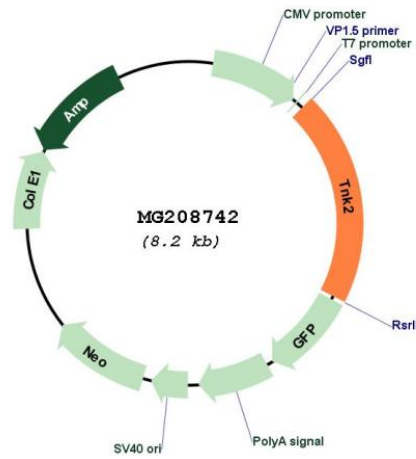
Sgfl-RsrII

Cloning Scheme:

Cloning sites used for ORF Shuttling:



Plasmid Map:



<b>ACCN:</b>	BC031168
<b>ORF Size:</b>	1650 bp
<b>OTI Disclaimer:</b>	The molecular sequence of this clone aligns with the gene accession number as a point of reference only. However, individual transcript sequences of the same gene can differ through naturally occurring variations (e.g. polymorphisms), each with its own valid existence. This clone is substantially in agreement with the reference, but a complete review of all prevailing variants is recommended prior to use. <a href="#">More info</a>
<b>OTI Annotation:</b>	This clone was engineered to express the complete ORF with an expression tag. Expression varies depending on the nature of the gene.
<b>Components:</b>	The ORF clone is ion-exchange column purified and shipped in a 2D barcoded Matrix tube containing 10ug of transfection-ready, dried plasmid DNA (reconstitute with 100 ul of water).
<b>Reconstitution Method:</b>	<ol style="list-style-type: none"><li>1. Centrifuge at 5,000xg for 5min.</li><li>2. Carefully open the tube and add 100ul of sterile water to dissolve the DNA.</li><li>3. Close the tube and incubate for 10 minutes at room temperature.</li><li>4. Briefly vortex the tube and then do a quick spin (less than 5000xg) to concentrate the liquid at the bottom.</li><li>5. Store the suspended plasmid at -20°C. The DNA is stable for at least one year from date of shipping when stored at -20°C.</li></ol>
<b>RefSeq:</b>	<a href="#">BC031168.1</a>
<b>RefSeq Size:</b>	2823 bp
<b>RefSeq ORF:</b>	1652 bp
<b>Locus ID:</b>	51789
<b>Cytogenetics:</b>	16 B3
<b>Gene Summary:</b>	Non-receptor tyrosine-protein and serine/threonine-protein kinase that is implicated in cell spreading and migration, cell survival, cell growth and proliferation. Transduces extracellular signals to cytosolic and nuclear effectors. Phosphorylates AKT1, AR, MCF2, WASL and WWOX. Implicated in trafficking and clathrin-mediated endocytosis through binding to epidermal growth factor receptor (EGFR) and clathrin. Binds to both poly- and mono-ubiquitin and regulates ligand-induced degradation of EGFR, thereby contributing to the accumulation of EGFR at the limiting membrane of early endosomes. Downstream effector of CDC42 which mediates CDC42-dependent cell migration via phosphorylation of BCAR1. May be involved both in adult synaptic function and plasticity and in brain development. Activates AKT1 by phosphorylating it on 'Tyr-176'. Phosphorylates AR on 'Tyr-267' and 'Tyr-363' thereby promoting its recruitment to androgen-responsive enhancers (AREs). Phosphorylates WWOX on 'Tyr-287'. Phosphorylates MCF2, thereby enhancing its activity as a guanine nucleotide exchange factor (GEF) toward Rho family proteins. Contributes to the control of AXL receptor levels. Confers metastatic properties on cancer cells and promotes tumor growth by negatively regulating tumor suppressor such as WWOX and positively regulating pro-survival factors such as AKT1 and AR.[UniProtKB/Swiss-Prot Function]