

## Product datasheet for **MG208734**

### **Lrit2 (NM\_173418) Mouse Tagged ORF Clone**

#### **Product data:**

Product Type:	Expression Plasmids
Product Name:	Lrit2 (NM_173418) Mouse Tagged ORF Clone
Tag:	TurboGFP
Symbol:	Lrit2
Synonyms:	A930010E21Rik; Lrrc22
Mammalian Cell Selection:	Neomycin
Vector:	pCMV6-AC-GFP (PS100010)
E. coli Selection:	Ampicillin (100 ug/mL)



[View online »](#)

**ORF Nucleotide Sequence:**

>MG208734 representing NM\_173418  
 Red=Cloning site Blue=ORF Green=Tags(s)

TTTTGTAATACGACTCACTATAGGGCGGCCGGGAATTCGTCGACTGGATCCGGTACCGAGGAGATCTGCC  
 GCC**CGCATCGCC**

ATGGCTTTTGTTTTTACTGTTTCTTGAAGTTCTGGTCTCTGGTTATACATGCAGTGCAGCCGTTCT  
 GTCTGCCAGAGTGTACCTGTTTCCAGAGGAGATTTTGGCAGGAGCCTTCAGTGCATGTCTATGTCTTTGGG  
 AAAGATCCAGACAACCTTTCCCGAAGAAGCTCAAGCAAGTGAAGTGAAGTGAAGTGAAGTGAAGTGAAGT  
 TCCAGGGGTTTTTACCAACATGAGCAGTTTGAATACCTTTGGCTCAACTTTAACAATGTCAGTGTGA  
 TCCACCTAGGCGCCCTGGAGGACCTGCCAGAGCTGAGAGAGCTGAGACTAGAGGGGAACAACTCCGTTT  
 AGTACCATGGACAGCGTCCGCGCCACCCTCTCCTGCGGGTTTTGGATCTCAAACACAACCGGATTGAT  
 TCTGTCCAGAAGTGGCTCTTCACTTCTAACCAACCTGATATACCTTGACATATCTCCAACAGGTTGA  
 CAGTTGTATCCAAGGGTGTCTTCTGAAGTGGCCAGCCTATCAGAAACGGCAACAGCTTGGTTGTGGAGC  
 TGAGTTTCTTTCAATATGGTATTGTCGCTGCACAATAATCCTTGGTTGTGCGACTGCCGATTAAGGGGA  
 CTTGCTCAGTTTGTCAAGTCCGTTGGTCCCCCTTTCATACTGGTGAATTCGTACCTGGTATGCCAGGGTC  
 CTGTCTCTAAGGCAGGGCAGCTTTTACATGAGACTGAGCTCGGAGTTTGTATGAAGCCAACATTTCAAC  
 CCCTAGTGTCAATGTCAGTATCCAGGTAGGAAAGAACGTGACTCTGCAATGTTTTGCACAAGCCAGTCCC  
 TCACCAACCATTGCATGGAAGTATCCCCTGAGCAGCTGGAGAGAAATTTGATGTGTGGCCTCGCCAAATG  
 CAGAAGGTATCATTCTGTCTCAGCTTGTATCCAGCAGCTCAACTGGTATGAGGCGGAATTTATACCTG  
 CATGGCCTTCACTCCATCGGCAGGAGCTCCCTTGTCTTACTCTATGTCCAGCCTGCACAGGCCATG  
 CCTGGATTGCATTTCTTCCACCTCTCAGAGGTCAGTGCCTATGTTGACCTACGAGTGGTCAAGCAGA  
 CAGTGCATGGCATCTTGTGTCAGTGGCTCACAGTGAACCACTTGGTGGAGCAACAATGGTTCACCCTCA  
 TATTACATCTGATGAAGCTCTCAGGAAGAAGTGGTCCACATAGGCCCTGGAATCAACACATACGCCGTG  
 GATGACCTTCTCCTGCTACAAAATATAAAGCATGTCTCAGCCTGAGGAATCAGCCTCCAAGCCAGGGCC  
 AGTGTGTGGTCTTTGTGACAGGCAAGACAGTGGTGGGCTAGAGGGTCTGAGCACCTCTTGCATGTAC  
 TGTAGTCTTGTGTGCTGTCTCTGGCACTGCCTGTGGGTGCTTATGTCTGGGTATCCAGGGTCCATAC  
 AACTTCAGTGAAGTGGTGTGGCGCCGTTGCTCTTACAGGAAAACCCTAAGATGCCACAAGCAGTAC  
 CACAGTGAAGGATAACTCTTTCAAGACCCTCAGGTGTCTATGAGGATGGTGAAGTCAAGAGTCAAGAGTCA  
 GGAGGAGGATGAGGAGGTAGAAAAGGAGGTATCAGT

**ACGCGTACGCGGCCGCTCGAG** - GFP Tag - GTTTAA

**Protein Sequence:**

>MG208734 representing NM\_173418  
 Red=Cloning site Green=Tags(s)

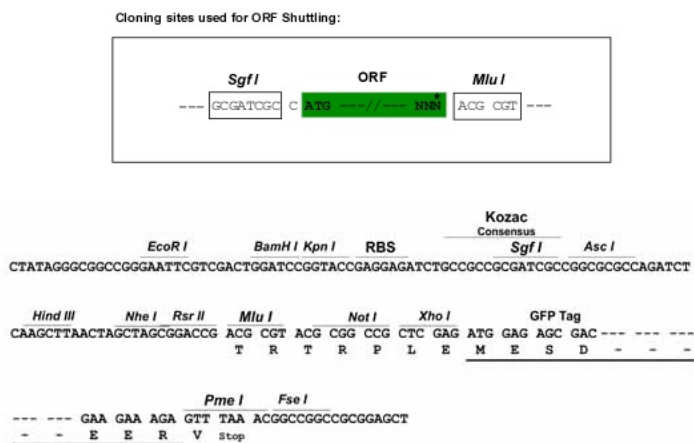
MAFVFYCFQLQVLVSWVIHAVQPFLPECTCSEESFGRSLQCMSMSLGKIPDNFPEELKQVRIENSPLFEL  
 SQGFFTNMSSLEYLWLNFNNTVVIHLGALEDLPELRELRLRLEGNKLRVWPWTAFRATPLLRLVLDLKHNRID  
 SVPELALQFLTNLIYLDISSNRLTVVSKGVFLNWPAYQKRQQLGCGAEFLSNMVLSLHNNPWLCDRLRG  
 LAQFVKSVGPPFILVNSYLVCQGPVSKAGQLLHETELGVMKPTISTPSVNTIQVGKNVTLQCFQAQSP  
 SPTIAWKYPLSTWREFDLASPIAEGIIISQLVIPAAQLVDGGNYTCMAFNISIGRSSLVILLVYQPAQAM  
 PGLHFLSTSSEVSAYVDLRVVKQTVHGIILLQWLVTVNLAEQWFTLYITSDEALRKKVHVHIGPGINTYAV  
 DDLLPATKYKACLSLRNQPPSQGQCVFVTGKDSGGLEGREHLLHVTVVLCAVLLALPVGAYVWVSQGPY  
 NFSEWCWRRRCPLHRKTLRCPQAVPQCKDNSFKDPSGVYEDGESHRVMEDEEVEKEGIS

**TRTRPLE** - GFP Tag - V

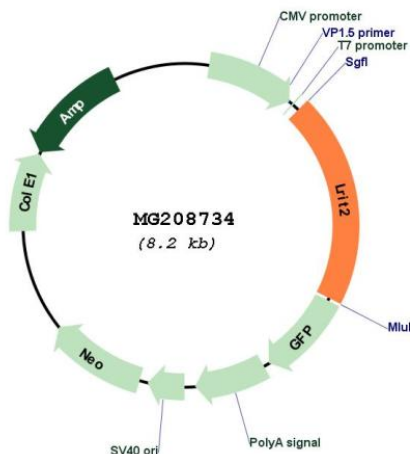
**Restriction Sites:**

Sgfl-MluI

Cloning Scheme:



Plasmid Map:



<b>ACCN:</b>	NM_173418
<b>ORF Size:</b>	1647 bp
<b>OTI Disclaimer:</b>	The molecular sequence of this clone aligns with the gene accession number as a point of reference only. However, individual transcript sequences of the same gene can differ through naturally occurring variations (e.g. polymorphisms), each with its own valid existence. This clone is substantially in agreement with the reference, but a complete review of all prevailing variants is recommended prior to use. <a href="#">More info</a>
<b>OTI Annotation:</b>	This clone was engineered to express the complete ORF with an expression tag. Expression varies depending on the nature of the gene.
<b>Components:</b>	The ORF clone is ion-exchange column purified and shipped in a 2D barcoded Matrix tube containing 10ug of transfection-ready, dried plasmid DNA (reconstitute with 100 ul of water).
<b>Reconstitution Method:</b>	<ol style="list-style-type: none"><li>1. Centrifuge at 5,000xg for 5min.</li><li>2. Carefully open the tube and add 100ul of sterile water to dissolve the DNA.</li><li>3. Close the tube and incubate for 10 minutes at room temperature.</li><li>4. Briefly vortex the tube and then do a quick spin (less than 5000xg) to concentrate the liquid at the bottom.</li><li>5. Store the suspended plasmid at -20°C. The DNA is stable for at least one year from date of shipping when stored at -20°C.</li></ol>
<b>RefSeq:</b>	<a href="#">NM_173418.4</a>
<b>RefSeq Size:</b>	2784 bp
<b>RefSeq ORF:</b>	1650 bp
<b>Locus ID:</b>	239038
<b>UniProt ID:</b>	<a href="#">Q6PFC5</a>
<b>Cytogenetics:</b>	14 B