

## Product datasheet for **MG208721**

### Uckl1 (NM\_026765) Mouse Tagged ORF Clone

#### Product data:

Product Type:	Expression Plasmids
Product Name:	Uckl1 (NM_026765) Mouse Tagged ORF Clone
Tag:	TurboGFP
Symbol:	Uckl1
Synonyms:	1110007H10Rik; Urkl1
Mammalian Cell Selection:	Neomycin
Vector:	pCMV6-AC-GFP (PS100010)
E. coli Selection:	Ampicillin (100 ug/mL)



[View online »](#)

**ORF Nucleotide Sequence:**

>MG208721 representing NM\_026765  
 Red=Cloning site Blue=ORF Green=Tags(s)

TTTTGTAATACGACTCACTATAGGGCGGCCGGAATTCGTCGACTGGATCCGGTACCGAGGAGATCTGCC  
 GCC**CGGATCGCC**

ATGGCTGCGCCGCCCTCAATGAGCGCCGCCCTTCGCCCTGCAGTCTGCTGTGCCCCAGACGTGC  
 CTGGCCGCCAGGCCGAGCAGAATGAAACGGCGTGCAGGACCGCAGCAATGCAGGGACCTTGACAGACT  
 TCTCCACCAGTGGTACTGGGCGCTCACCCGGAAGCGCACCACCAGCCAGTGCAGTCAAGTCAAGAACCC  
 CTGCTTCGCACAAGCAAACGTACCATCTACACAGCTGGGCGGCCACCATGGTACAATGAACATGGTACAC  
 AGTCCAAGGAGGCCTTTGCTATTGGCTTAGGAGGTGGCAGTGCATCTGGGAAGACCAGTGTGCCAGAAT  
 GATCATTGAGGCACTAGATGTGCCCTGGTGGTCTGTTGTCCATGGACTCCTTCTATAAGGTTCTGACG  
 CAGCAGCAGCAGGAACAGGCTGCCTGTAACAATTTCAACTTTGACCACCCTGATGCCTTTGACTTCGATC  
 TCATCATTTCCACCCTTAAGAAGCTAAAACAGGGCAGGAGTGTCCAAGTGCCATCTATGATTTCACTAC  
 CCATAGCCGAAAAAGGACTGAAAAACCCTGTATGGTGCGAATGTCATCATCTTTGAGGGTATCATGGCC  
 TTTGCTGATAAGACACTGCTGGAGCTCCTGGACATGAAGATCTTTGTGGACACGGACTCTGATATCCGAC  
 TGGTTCGGCGTCTGCGCAGGGACATCAGCGAACAGGGCCGGGACATTGAGGGTGTCAATTAAGCAGTACAA  
 CAAGTTTGTCAAACCTGCATTTGATCAGTATATCCAGCCTACCATGCGGCTGGCAGATATTGTGGTGCC  
 AGAGGGAGCGGGAACACAGTAGCCATTGACCTGATTGTGCAGCATGTTCCAGCCAGCTGGAAGAGCGCG  
 AACTCAGCGTCAGGGCCGCTGGCCCTCCGCTCACCAGTGCCATCCCCTCCCCAGACACTGAGTGTCT  
 CAAGAGTACCCGAGGTCGAGGCATGCACCCATCATCAGGGACAAGGAGACTAGCCGGGATGAATTC  
 ATCTTCTACTCCAAAAGACTGATGCGGCTGCTTATTGAACATGCCTGCTTCTTACCCTTTCAGGACT  
 GCATGTACAGACTCCACAGGGCAGGACTACGTGGGAAAGTGTACGCTGGAAAAACAGATCACCCGCGT  
 GTCAAATTCGCTGCAGGAGAAAACCATGGAGCCTGCCTGCGTGCCTGTGCAAGGATGTGCGCATCGGC  
 ACTATCTCATCCAGACCAACCAGCTCACAGGGGAGCCTGAGCTCCATTACCTGAGGCTTCCCAAGGATA  
 TCAGTGATGACCATGTGATCCTGATGGACTGCACAGTATCCACAGGTGCTGCGGCCATGATGGTGTACG  
 TGTACTCTGGACCATGATGTGCTGAGGACAAGATCTTTTTGCTGTCCCTGCTCATGCCAGAGATGGGT  
 GTGCATTTCTGGGCTACGCTTTCCACGCGTGAGAATCATCACCACAGCTGTGGACAAGCGTGTCAATG  
 ACCTTTCCGATCATCCAGGCATTGGAACTTTGGTGTGCTACTTTGGACAGATGCAGTCCCTGA  
 TGGCAGTGATGATGATGAGGCAGCCACTGTGGT

AG**CGGACCG**ACGCGTACGCGGCCGCTCGAG - GFP Tag - GTTTAA

**Protein Sequence:**

>MG208721 representing NM\_026765  
 Red=Cloning site Green=Tags(s)

MAAPPASMSAAPSPLQSAVAPDVPGRQAEQNETACEDRSNAGTLDRLLPPVGTGRSPRKRTTSQCKSEPP  
 LLRTSKRTIYTAGRPPWYNEHGTQSKEAFAIGLGGGSASGKTTVARMIIIEALDVPWVLLSMDSFYKVL  
 QQQEQAACNNFNFDHPDAFDLIIISTLKKLKQGRSVQVPIYDFTTHSRKKDWKTLYGANVIFEGIMA  
 FADKTLLELLDMKIFVDTDSDIRLVRRLLRDISERGRDIEGVIKYQNKFKPAFDQYIQPTMRLADIVVP  
 RGSNTVAIDLIVQHVHSQLEERELSVRAALASAHQCHPLPQTLVSLKSTPQVRGMHTIIRDKETSREDF  
 IFYSKRLMRLIEHALSFLPFQDCTVQTPQGQDYVVKCYAGKQITGVSI LRAGETMEPALRAVCKDVRIG  
 TILIQTNQLTGEPELHYLRPKDISDDHVILMDCTVSTGAAAMMAVRVLLDHDVPEDKIFLLSLLMAEMG  
 VHSVAYAFPRVRIITTAVDKRVNDFRIIPGIGNFGDRYFGTDAVDPGSDDEEAATVG

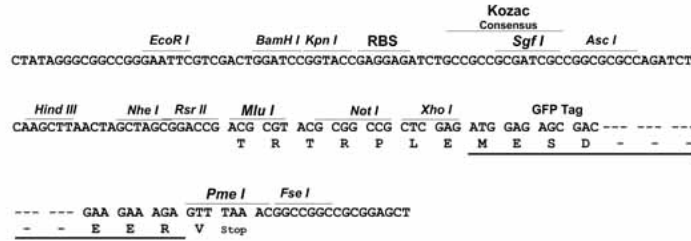
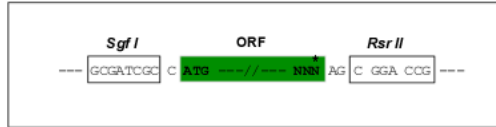
SGP**TRRRLE** - GFP Tag - V

**Restriction Sites:**

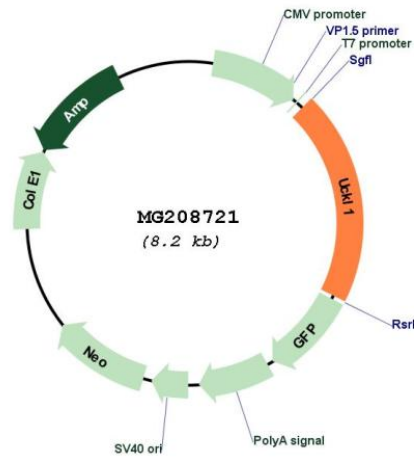
Sgfl-RsrII

Cloning Scheme:

Cloning sites used for ORF Shuttling:



Plasmid Map:



<b>ACCN:</b>	NM_026765
<b>ORF Size:</b>	1644 bp
<b>OTI Disclaimer:</b>	The molecular sequence of this clone aligns with the gene accession number as a point of reference only. However, individual transcript sequences of the same gene can differ through naturally occurring variations (e.g. polymorphisms), each with its own valid existence. This clone is substantially in agreement with the reference, but a complete review of all prevailing variants is recommended prior to use. <a href="#">More info</a>
<b>OTI Annotation:</b>	This clone was engineered to express the complete ORF with an expression tag. Expression varies depending on the nature of the gene.
<b>Components:</b>	The ORF clone is ion-exchange column purified and shipped in a 2D barcoded Matrix tube containing 10ug of transfection-ready, dried plasmid DNA (reconstitute with 100 ul of water).
<b>Reconstitution Method:</b>	<ol style="list-style-type: none"><li>1. Centrifuge at 5,000xg for 5min.</li><li>2. Carefully open the tube and add 100ul of sterile water to dissolve the DNA.</li><li>3. Close the tube and incubate for 10 minutes at room temperature.</li><li>4. Briefly vortex the tube and then do a quick spin (less than 5000xg) to concentrate the liquid at the bottom.</li><li>5. Store the suspended plasmid at -20°C. The DNA is stable for at least one year from date of shipping when stored at -20°C.</li></ol>
<b>RefSeq:</b>	<a href="#">NM_026765.3</a> , <a href="#">NP_081041.2</a>
<b>RefSeq Size:</b>	1811 bp
<b>RefSeq ORF:</b>	1647 bp
<b>Locus ID:</b>	68556
<b>UniProt ID:</b>	<a href="#">Q91YL3</a>
<b>Cytogenetics:</b>	2 H4
<b>Gene Summary:</b>	May contribute to UTP accumulation needed for blast transformation and proliferation. [UniProtKB/Swiss-Prot Function]