

Product datasheet for **MG208712**

Riok2 (NM_025934) Mouse Tagged ORF Clone

Product data:

Product Type:	Expression Plasmids
Product Name:	Riok2 (NM_025934) Mouse Tagged ORF Clone
Tag:	TurboGFP
Symbol:	Riok2
Synonyms:	2010110K24Rik; 2410085M17Rik
Mammalian Cell Selection:	Neomycin
Vector:	pCMV6-AC-GFP (PS100010)
E. coli Selection:	Ampicillin (100 ug/mL)



[View online »](#)

ORF Nucleotide Sequence:

>MG208712 representing NM_025934
 Red=Cloning site Blue=ORF Green=Tags(s)

TTTTGTAATACGACTCACTATAGGGCGGCCGGAATTCGTCGACTGGATCCGGTACCGAGGAGATCTGCC
 GCC**CGGATCGCC**

ATGGGGAAGTGAATGTAGCCAAGCTTAGTACATGAGCCGCGATGACTTCAGAGTCTGACTGCGGTTG
 AAATGGGCATGAAAAACCATGAGATTGTTCCCTGCAGTTTGATTGCTTCTATAGCCAGCCTGAAACATGG
 TGGCTGTAATAAGATTCTAAGAGAAATTGGTGAAGCATAAACTTATAGCGTGGGAACGTAATAAACTGTG
 CAGGGCTATCGGTTGACAAATGCTGGCTATGATTACCTAGCTCTGAAAACGCTGTCTTCTAGACAGGTAG
 TTGAATCTGTTGGAAACAGATGGGTGTGGCAAAGAGTCAGACATTTACATTGTTGCCAATGAAGCCGG
 GCAGCAGCTCGCACTGAAGCTCCACAGACTGGGAAGAATTCTTTTGAATCTGAAAAACAAGCGCGAT
 TACCACAAGCACAGGCACAATGTTTCTGGCTTACTTATCTCGGCTCTCGGCCATGAAGGAATTTGCCT
 ATATGAAGGCATTATATGAGAGGAAATTTCCAGTTCCAAAGCCAATTGATTATAATCGCCATGCAGTGAT
 CATGGAGCTTATTAATGGTTATCCCTATGTCAGATACATCATGTTGAAGACCCTGCATCAGTATATGAT
 GAAGCTATGGAACGTATAGTCAAACCTGGAAACCATGGACTGATTCATGGAGATTTCAATGAATCAATC
 TCATGTTGGACAAGATGACCACATCCCATGATTGATTTCCGAGATGGTTTCCACATCCCACCCAAA
 TGCTGAATGGTATTTTGACAGAGATGTTAAATGCATTGAGAGTTCTTCATGAAACGTTTTCAGTATGAA
 AGTGAGCTCTACCAACCTTCAGTGATATCAGGAAGGAGGATTCTCTTGATGTTGAGGTCTCTGCCAGTG
 GTTACACAAGGAAATGCAAGCAGATGATGAACTGCTACATCCAGTAGGCCCAGATGATAAAATTAAGTGA
 AACAGAAGAGGACTCTGACTTACGTTTTCTGATGAAGAAATGTTAGAAAAAGCCAAAGTTTGGAGGTCA
 GAATTTGGAAAAGGAAGCAGACCCAGCAGATGAATCAGGTGGATCCTGGTGCTGCTTGTCTACAGACAGCA
 ACAAAATAAAGGATGACAGCTTACCAGAGGAGAGTGCTCATGTGTCAGTTTTCGAAGTGACGGCATTAAAG
 CCAAGCTGTAGAAGACATGGAAAAGGACAGTTCTTCCCCACAGGTCGGTTACTGAGTTCTCTGAGGAGAGC
 AGGAGAAGTGAATGATGGGCAGCCAGGTCAGAGAAGCCCTGCTGGCTCTGAGGACTGTGACGATGAAC
 CCCCCATCTGATTGCCTTGTCATCAGTGAACAGGGAGTTTCAGGCCTTTCAGAGACGAAGAGAGTATGAG
 TAGTGTTACTCGGCATAGAACAAGAACATTGAGTGTACGTCTGCGGGCAGTGCCCTAAGCTGTTCAACA
 ATCCCTCCAGAACTGGTGAAGCAGAAGGTGAAGCGTCAGCTGACGAGGCAGCAGAAGGGCGCTGCCAGAC
 GCCGGTGCAGAAAGGAGAAGCCAATGTGTTTACCAAGCAGCGGAGGGAAAACATGCAGAATATTAATC
 GAGTTTGAAGCAGCCAGCTTTTGGGGAGAC

ACGCGTACGCGGCCGCTCGAG - GFP Tag - GTTTAA

Protein Sequence:

>MG208712 representing NM_025934
 Red=Cloning site Green=Tags(s)

MGKVNVAKLRYMSRDDFRVLTAVEMGMKNHEIVPCSLIASIASLKHGGCNKILRELVKHKLIAWERTKTV
 QGYRLTNAGYDYLALKTLSSRQVVEVSGNQMGVKESDIYIVANEAGQLALKLHRLGRSFRNLKMKRD
 YHKHRHNVSWL YLSRLSAMKEFAYMKALYERKFPVPKPIDYNRHAVIMELINGYPLCQIHHVEDPASVYD
 EAMELIVKLGHNGLIHGDFNEFNMLDKDDHITMIDFPQMVSTSHPNAEWYFDRDVKCIREFFMKRFSYE
 SELYPTFSDIRKEDSLDVEVSASGYTKEMQADDELLHPVGPDDKITETEEDSDFTFSDEEMLEKAKVWRS
 ELEKEADPADESGGSWCCLSTDSKQIKDDSLPEESAHVSSFVETALSQAVEDMERQVLPHRSVTEFSEES
 RRTENDGQPQRSPAGSEDCDEPHLIALSSVNREFRPFDEESMSSVTRHRRTL SVTSAGSALSCST
 IPPELVKQKVKRQLTRQQKAAARRRLQKGEANVFTKQRRENMQNIKSSLEAASFWD

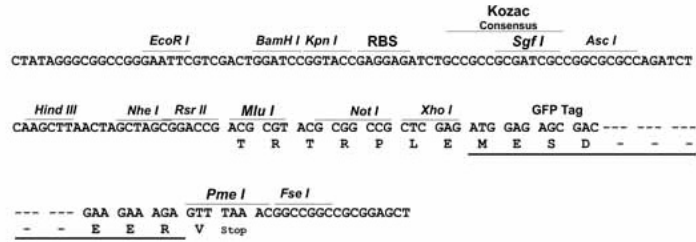
TRTRPLE - GFP Tag - V

Restriction Sites:

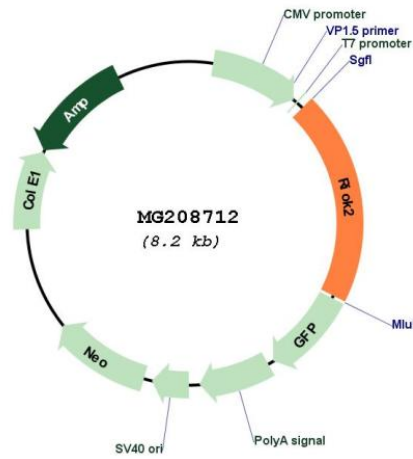
Sgfl-MluI

Cloning Scheme:

Cloning sites used for ORF Shutting:



Plasmid Map:



ACCN:	NM_025934
ORF Size:	1641 bp
OTI Disclaimer:	The molecular sequence of this clone aligns with the gene accession number as a point of reference only. However, individual transcript sequences of the same gene can differ through naturally occurring variations (e.g. polymorphisms), each with its own valid existence. This clone is substantially in agreement with the reference, but a complete review of all prevailing variants is recommended prior to use. More info
OTI Annotation:	This clone was engineered to express the complete ORF with an expression tag. Expression varies depending on the nature of the gene.
Components:	The ORF clone is ion-exchange column purified and shipped in a 2D barcoded Matrix tube containing 10ug of transfection-ready, dried plasmid DNA (reconstitute with 100 ul of water).
Reconstitution Method:	<ol style="list-style-type: none">1. Centrifuge at 5,000xg for 5min.2. Carefully open the tube and add 100ul of sterile water to dissolve the DNA.3. Close the tube and incubate for 10 minutes at room temperature.4. Briefly vortex the tube and then do a quick spin (less than 5000xg) to concentrate the liquid at the bottom.5. Store the suspended plasmid at -20°C. The DNA is stable for at least one year from date of shipping when stored at -20°C.
RefSeq:	NM_025934.1 , NP_080210.1
RefSeq Size:	2030 bp
RefSeq ORF:	1644 bp
Locus ID:	67045
UniProt ID:	Q9CQS5
Cytogenetics:	17 A3.1
Gene Summary:	Serine/threonine-protein kinase involved in the final steps of cytoplasmic maturation of the 40S ribosomal subunit. Involved in export of the 40S pre-ribosome particles (pre-40S) from the nucleus to the cytoplasm. Its kinase activity is required for the release of NOB1, PNO1 and LTV1 from the late pre-40S and the processing of 18S-E pre-rRNA to the mature 18S rRNA. May regulate the timing of the metaphase-anaphase transition during mitotic progression, and its phosphorylation, may regulates this function.[UniProtKB/Swiss-Prot Function]