

Product datasheet for **MG208708**

Scp2 (NM_011327) Mouse Tagged ORF Clone

Product data:

| | |
|---------------------------|--|
| Product Type: | Expression Plasmids |
| Product Name: | Scp2 (NM_011327) Mouse Tagged ORF Clone |
| Tag: | TurboGFP |
| Symbol: | Scp2 |
| Synonyms: | AA409774; AA409893; C76618; C79031; ns-LTP; NSL-TP; SCP-2; SCP-X; SCPX |
| Mammalian Cell Selection: | Neomycin |
| Vector: | pCMV6-AC-GFP (PS100010) |
| E. coli Selection: | Ampicillin (100 ug/mL) |



[View online »](#)

ORF Nucleotide Sequence:

>MG208708 representing NM_011327
 Red=Cloning site Blue=ORF Green=Tags(s)

TTTTGTAATACGACTCACTATAGGGCGGCCGGGAATTCGTCGACTGGATCCGGTACCGAGGAGATCTGCC
 GCCGCGATCGCC

ATGCCTTCTGTCGCTTTGAAATCTCCGCGCTGCGCCGGTGTTCGTGGTCGGCGTTGGCATGACCAAGT
 TCATGAAGCCTGGAGGTGAGAACTCAAGAGACTATCCTGATATGGCAAAGGAAGCAGGCCAGAAGGCATT
 GGAAGATGCACAGATCCCTTACTCCGCAGTGGAACAGGCATGCGTTGGCTATGTGTATGGTGATTCCACC
 AGTGGGCAGAGGGCTATCTATCAGTTTGGGACTGACTGGCATTCTATAATTAATGTCAACAATAACT
 GTTCTACTGGTTCGACTGCTTTGTTATGGCCATCAACTGATTCAAGGAGGCTTGGCAAATGTGTGTT
 GGCTCTTGGGTTTGAGAAGATGGAGAGGGGATCCATTGGAACAAAATTCTCAGATCGACCCTCCAAC
 GATAAACATATTGAAGTCTTGATCGATAAGTATGGATTGTCTGCACATCCGATTACTCTCAGATGTTTG
 GGTATGCTGGGAAAGAACATATGAAAAATATGGAACAAAAGTTGAACACTTTGAAAAATTGGATGGAA
 AAATCATAAACTCAGTTAATAACACGTATCCAGTCCAAGATGAATACAGCTTAGAAGAAGTAATG
 AAATCAAAACCAGTTTTCGATTTCTGACTATCTTGCAATGCTGCCCCACCTCAGATGGTCCGCTGCCG
 CGATTCTGTCCAGCGAGGAGTTTGTGCAGCAGTACGGCCTGCAGTCCAAAGCGGTGGAGATTGTGGCCCA
 GGAGATGATGACTGACTTACCCAGTACGTTTGAAGAGAAAAGTATTATTAAGTGGTTGGCTATGATATG
 AGTAAAGAAGCTGCCAGGAGATGCTATGAGAAGTCCGGCTGACACCCAACGATGTGCAGCTGATAGAGC
 TTCAGGATTGCTTCTCTGTCAATGAACTCATCACTTACGAAGCACTGGGGCTCTGTCCAGAAGGACAAGG
 TGAACCTGGTGGACAGAGGGGACAACACTTACGGAGAAAGTGGGTGATCAACCCTAGTGGAGGCCTC
 ATCTCAAAGGGACACCCACTGGGCGCAACAGGCTGGCTCAGTGCAGCGGAGCTCTGCTGGCAGCTGAGAG
 CGGAACCCGAAAGAGGAGGTTCCCGGGCAAAGGTGGCTCTGCAGCACAATCTAGGCCCGGAGGAGC
 TGTGGTTGTCAACCTCTACAGGATGGGTTTTCCGGAAGCTGCCAGCTCCTCAGGACGCACCAGTTTCA
 GCTGCTCCACCACTCTGCAGGGGATGGATTCAAGGCAAACCTCGTCTTTAAGGAGATTGAGAAGAAGC
 TTGAAGAGGAAGGGAAACAGTTCGTGAAGAAAATCGGTGGCATTGTTGCCTTCAAAGTGAAGATGGCC
 TGGAGGCAAAGAAGCTACCTGGGTGGTGGATGTGAAGAATGGCAAAGGATCTGTGCTTCCAATTGAGAT
 AAGAAGGCTGACTGCACAATCCCATGGCCGACTCAGACTTGCTGGCTTTGATGACTGAAAAATGAACC
 CTCAGTCGGCCTTCTTCAAGGGAACTGAAGATTGCTGGTAACATGGGACTGGCCATGAACTACAGAA
 CCTTCAGCTTCAGCCGGCAAAGCTAAGCTG

ACGCGTACGCGGCCGCTCGAG - GFP Tag - GTTTAA

Protein Sequence:

>MG208708 representing NM_011327
 Red=Cloning site Green=Tags(s)

MPSVALKSPRLRRV FVGVGMTKFMKPGGENSRDYPDMAKEAGQKALEDAQIPYSAVEQACVGVYVDST
 SGQRAIYHSLGLTGPIIINVNNCSTGSTALFMAHQLIQGLLANCVLALGFEMERGSIGTKFSDRTTPT
 DKHIEVLIDKYGLSAHPITPQMFYAGKEHMEKYGTKEVHFAKIGWKNHKHSVNNTYSQFQDEYSLEEVM
 KSKPVDFLTLILQCCPTSDGAAAAILSSEEFVQYGLQSKAVEIVAQEMMTDLPSTFEEKSIIKVVGYDM
 SKEAARRCYEKSGLTPNDVDVIELHDCFSVNELITYEALGLCPEGQGGTLVDRGDNTYGGKWINPSSGL
 ISKGHPLGATGLAQCAELCWQLRGEAGKRQVPGAKVALQHNLGLGAVVVTLYRMGFPEAASSFRTHQVS
 AAPTSSAGDGFKANLVFKEIEKKLEEEGEQFVKIGGIFAFKVKDGPGGKEATWVVDVKNKGSVLPNSD
 KKADCTITMADSDLLALMTGKMNPQSAFFQGLK IAGNMGLAMKLQNLQLQPGKAKL

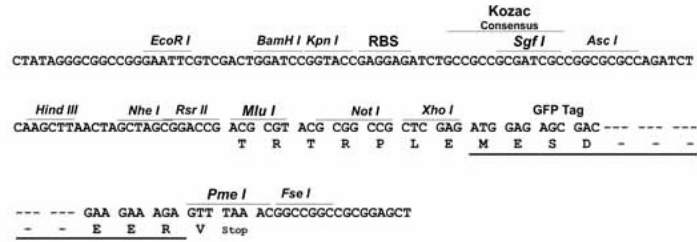
TRTRPLE - GFP Tag - V

Restriction Sites:

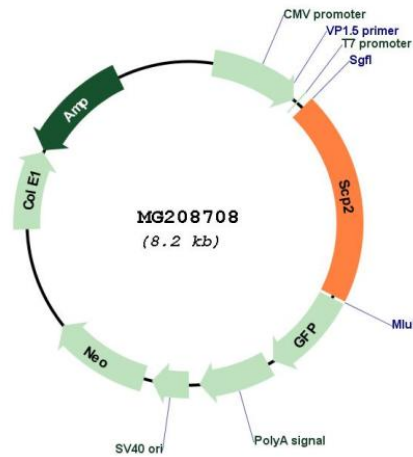
Sgfl-MluI

Cloning Scheme:

Cloning sites used for ORF Shutting:



Plasmid Map:



| | |
|-------------------------------|---|
| ACCN: | NM_011327 |
| ORF Size: | 1641 bp |
| OTI Disclaimer: | The molecular sequence of this clone aligns with the gene accession number as a point of reference only. However, individual transcript sequences of the same gene can differ through naturally occurring variations (e.g. polymorphisms), each with its own valid existence. This clone is substantially in agreement with the reference, but a complete review of all prevailing variants is recommended prior to use. More info |
| OTI Annotation: | This clone was engineered to express the complete ORF with an expression tag. Expression varies depending on the nature of the gene. |
| Components: | The ORF clone is ion-exchange column purified and shipped in a 2D barcoded Matrix tube containing 10ug of transfection-ready, dried plasmid DNA (reconstitute with 100 ul of water). |
| Reconstitution Method: | <ol style="list-style-type: none">1. Centrifuge at 5,000xg for 5min.2. Carefully open the tube and add 100ul of sterile water to dissolve the DNA.3. Close the tube and incubate for 10 minutes at room temperature.4. Briefly vortex the tube and then do a quick spin (less than 5000xg) to concentrate the liquid at the bottom.5. Store the suspended plasmid at -20°C. The DNA is stable for at least one year from date of shipping when stored at -20°C. |
| RefSeq: | NM_011327.4 |
| RefSeq Size: | 2626 bp |
| RefSeq ORF: | 1644 bp |
| Locus ID: | 20280 |
| UniProt ID: | P32020 |
| Cytogenetics: | 4 50.2 cM |
| Gene Summary: | Mediates in vitro the transfer of all common phospholipids, cholesterol and gangliosides between membranes. May play a role in regulating steroidogenesis.[UniProtKB/Swiss-Prot Function] |