

Product datasheet for **MG208695**

Ddx56 (NM_026538) Mouse Tagged ORF Clone

Product data:

Product Type:	Expression Plasmids
Product Name:	Ddx56 (NM_026538) Mouse Tagged ORF Clone
Tag:	TurboGFP
Symbol:	Ddx56
Synonyms:	2600001H07Rik; D11Ertd619e; Noh61
Mammalian Cell Selection:	Neomycin
Vector:	pCMV6-AC-GFP (PS100010)
E. coli Selection:	Ampicillin (100 ug/mL)



[View online »](#)

ORF Nucleotide Sequence:

>MG208695 representing NM_026538
 Red=Cloning site Blue=ORF Green=Tags(s)

TTTTGTAATACGACTCACTATAGGGCGGCCGGGAATTCGTCGACTGGATCCGGTACCGAGGAGATCTGCC
 GCC**CGCATCGCC**

ATGGAGGACCAAGAAGCGCTGGGTTTTGAACACATGGGCCTGGATCCCCGGCTCCTGCAGGCTGTACCCG
 ATTTGGGCTGGTCGACCTACGTTGATCCAGGAAAAGGCCATTCTCTGGCGCTGGAGGGGAAGGACCT
 CCTGGCCCGCGCCGCACAGGCTCCGGGAAGACCGCAGCTTATGCTATTCGGATGCTTCAGTCGCTTCTC
 CACAAGAAGGCGACAGGTCCTGTAATGGAGCAGGCTGTGAGAGGCCTTGTCTTGTCTACCAAGGAGC
 TGGCACGGCAGGCCAGGCCATGATCCAGCAACTGGTGCCTACTGTGCTCGGGATGTGCGAGTGGCTAA
 CGTCTCAGCTGCAGAAGACTCAGCTTCTCAGAGAGCTGTGTTGATGGAGAAGCCAGATGTGGTGGTGGGA
 ACCCCATCCCGAGTGTTAAGCCACTTGCAGCAGAACACCTTGAACCTCCGGGACTCCCTAGAGCTGCTGG
 TGGTAGATGAAGCTGACCTTCTTTTTCTTTGGCTTTGAGGATGAACTCAAGAGTCTTCTGTCACTT
 GCCTCGGATTTACCAGGCTTTTCTCATGTCCGCCACTTTCAATGAGGATGTACAACTCTGAAGGAGCTG
 GTACTGCATAACCCGGTTACCCTCAAGTTACAGGAGTCCAGCTGCCGGGCCAGACCAGCTCCAGCAAT
 TTCAGGTGGTCTGTGAGACAGAAGAGGACAAGTCTTGCTGCTGTATGCCTGCTCAAGCTGCACTGAT
 TCGGGGCAAAGCCTTGCTCTTTGTCAACTCTAGAGAGGGGTTACCGGCTCCGTCTTTTCTGGAACAG
 TTCAGCATTCTTCTGCGTGCTCAACGGAGAACTCCCACTGCGCTCCAGGTGCCACATCATCTCACAGT
 TCAACCAAGGCTTGATGATTGCGTCATAGCGACAGATGCTGAAATCTTGGGACCCCAAGTCAAAGGCAA
 ACGTCGAGGCCCGGGTCCAAGGAAACAAGGCCCTCTGATCCAGAGTCAAGTGTGGCTCGGGGCATAGAC
 TTCCACCACGTGTCTGCGGTCTCAATTTGACCTTCTCCACCGCAGAGGCTTATGTCCATCGAGCTG
 GCAGGACAGCTCGAGCCAACAACCCAGGCATAGTTCTGACCTTTGTGTTGCCCGGAACAGCCTTTCTT
 GGGAAAGATTGAGGACCTTCTGAGTGGAGAGGGCGAGGCCCATCCTGCTTCCATACCAGTCCAGATG
 GAGGAGATTGAAAGCTTTCGTTATCGTGCAGGGATGCCATGCGCTCAGTGACCAAGCAGGCCATTCGAG
 AGGCGAGACTGAAGGAGATCAAGGAGGAGCTTCTGCACTCAGAGAAGCTCAAGACATACTTTGAAGACAA
 CCCCAGAGACCTCAGCTACTTCGCCATGATCTGCCCTTGACCCCGCAGTGGTGAAGCCTCATTGGGC
 CATGTCCCTGACTATTTGGTCTCTGCTCTTCTGTCGCTTGTACATCCTCGAAAGAACGGAGAAAGG
 TGCCCTTCTTAGGAAGGCTAAGAAGGTGAAGGCCAGAACCCACTGCGTACTTAAAGCACAGGGGAAA
 GAAACCTAAGCCCGCAGCAAAGCCTTCT

ACGCGTACGCGGCCGCTCGAG – GFP Tag – GTTTAA

Protein Sequence:

>MG208695 representing NM_026538
 Red=Cloning site Green=Tags(s)

MEDQEALGFEHMGDPRLLQAVTDLWGSRPTLIQEKAIPALLEGKDLLARARTGSGKTAAYAIPMLQSL
 HKKATGPVMEQAVRGLVLPVKELARQAQMIQQLAAYCARDVRVANVSAEDSASQRAVLMKPDVVVG
 TPSRVLSHLQQNTLKLKRDSELLLVDADLLSFGFEDELKSLCHLPRIYQAFMSATFNEDVQTLKEL
 VLHNPVTLKQLQESQLPGPDQLQFQVVCETEEDKFLLLYALLKLSLIRGKALLFVNTLERYRLRFLEQ
 FSIPSCVLNGLPLRSRCHIIISQFNQGLYDCVIAIDAEILGPQVKGKRRGRGSKGNKASDPESGVARGID
 FHHVSAVLNFDLPPTAEAYVHRAGRTARANNPGIVLTFVLPAEQPFLGKIEDLLSSEGEAPILLPYQFQM
 EEIESFRYRCRDAMRSVTKQAIREARLKEIKEELLHSEKLTIFYEDNPRDLQLLRHDLPLHPAVVKPHLG
 HVPDYL VPAALRGLVHPRKRRKVPF SRKAKKVK AQNPLRDFKHRGKKPKPAAKPS

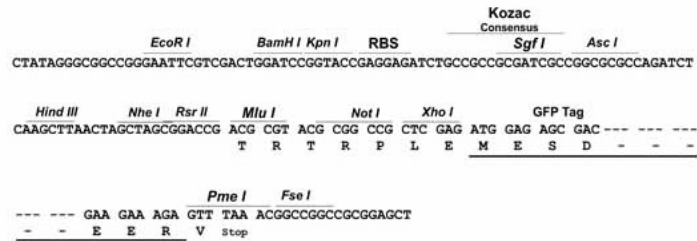
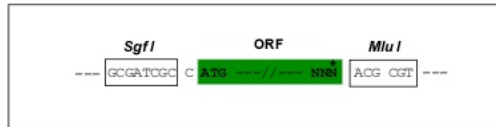
TRTRPLE – GFP Tag – V

Restriction Sites:

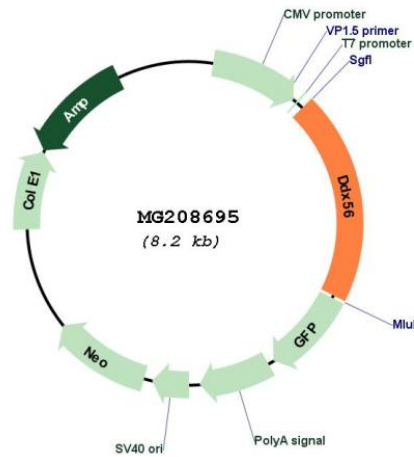
Sgfl-Mlul

Cloning Scheme:

Cloning sites used for ORF Shutting:



Plasmid Map:



ACCN:	NM_026538
ORF Size:	1638 bp
OTI Disclaimer:	The molecular sequence of this clone aligns with the gene accession number as a point of reference only. However, individual transcript sequences of the same gene can differ through naturally occurring variations (e.g. polymorphisms), each with its own valid existence. This clone is substantially in agreement with the reference, but a complete review of all prevailing variants is recommended prior to use. More info
OTI Annotation:	This clone was engineered to express the complete ORF with an expression tag. Expression varies depending on the nature of the gene.
Components:	The ORF clone is ion-exchange column purified and shipped in a 2D barcoded Matrix tube containing 10ug of transfection-ready, dried plasmid DNA (reconstitute with 100 ul of water).
Reconstitution Method:	<ol style="list-style-type: none">1. Centrifuge at 5,000xg for 5min.2. Carefully open the tube and add 100ul of sterile water to dissolve the DNA.3. Close the tube and incubate for 10 minutes at room temperature.4. Briefly vortex the tube and then do a quick spin (less than 5000xg) to concentrate the liquid at the bottom.5. Store the suspended plasmid at -20°C. The DNA is stable for at least one year from date of shipping when stored at -20°C.
RefSeq:	NM_026538.3 , NP_080814.1
RefSeq Size:	3287 bp
RefSeq ORF:	1641 bp
Locus ID:	52513
UniProt ID:	Q9D0R4
Cytogenetics:	11 3.94 cM
Gene Summary:	May play a role in later stages of the processing of the pre-ribosomal particles leading to mature 60S ribosomal subunits. Has intrinsic ATPase activity (By similarity).[UniProtKB/Swiss-Prot Function]